

! WARNING 安全告知

- To improve the security-take care that your bike is locked to a secure and stable object.
- When storing the lock in the bracket, ensure the straps are firm and buckled completely.
- 为了提高您爱车的安全系数, 建议您将爱车用ET480锁定在固定物上。
- 收纳注意: ET480锁体折叠后要完全插入锁套, 并扣紧搭扣。

! ATTENTION 注意

- Do remember your key number, when the key is lost, call the following number to reordering the key.
- 请记录下您锁的钥匙号码, 钥匙遗失后, 拨打以下电话, 凭钥匙号码补配钥匙。

0512-55198016

KEY NUMBER:

钥匙号码:

WARRANTY STATEMENT 咨询

ETOOK® has taken every step to ensure the quality of its product. If you have any issues or concerns, please contact us at:

ETOOK® 系列产品在品质方面已进行了严格的管理, 若发现不良品或对产品有不明之处, 请拨打以下客服电话咨询:

Phone: **0512-55198016**



Address: Unit 1, No.80, Jingwei Road, Zhoushi Town, Kunshan City, Jiangsu Province China.
Email address: easydo111@163.com
地址: 江苏省昆山市周市镇京威路80号1幢 (215313)

Suzhou EasyDo Sports Technology Co.,LTD.
苏州意多运动科技有限公司

CERTIFICATE OF QUALITY 产品合格证

Desc. 品名	Folding Lock 折叠锁
Model 型号	ET 480
Size 规格	L: 750mm
Q.C. 检验员	
Date 检验日期	
Standard 执行标准	GB 21556-2008

This product is qualified according to the delivery inspection. 检验合格 准许出厂

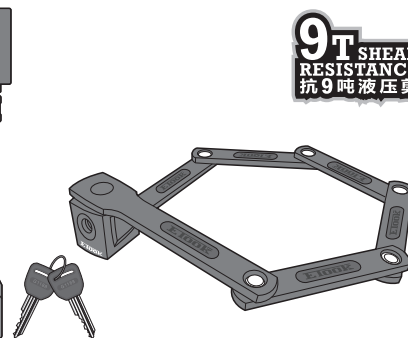
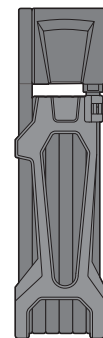


ETOOK®

FOLDING LOCK ET 480
折叠锁

SECURITY LEVEL 安全等级 **1 2 3 4 5 6**
GENERAL THEFT PROTECTION (防一般偷窃) PROFESSIONAL THEFT PROTECTION (防专业偷窃)

www.etook.cn

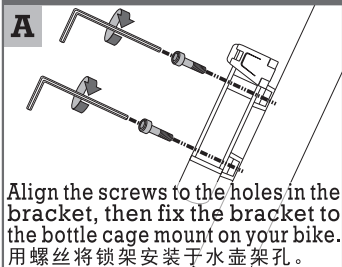


make your bike more secure!
让您的爱车更安全!

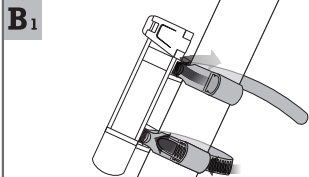
INSTRUCTIONS 安装使用说明

FOLDING LOCK ET 480

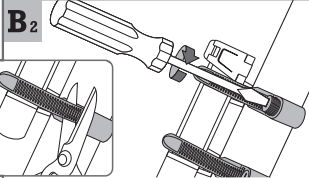
Installing the bracket 安装锁架



Align the screws to the holes in the bracket, then fix the bracket to the bottle cage mount on your bike.
用螺丝将锁架安装于水壶架孔。

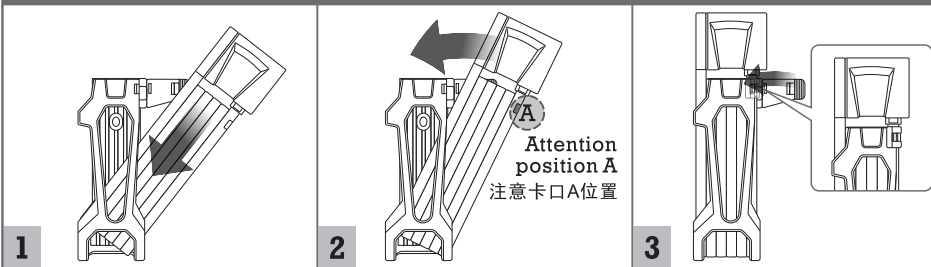


Use the straps to fit on to the bike frame.
用束带将锁架绑定在车架管上。



Tighten the straps to secure the bracket to the frame, trim the excess strap.
拧紧螺丝并剪掉多余的束带。

Storing the lock 收纳锁体

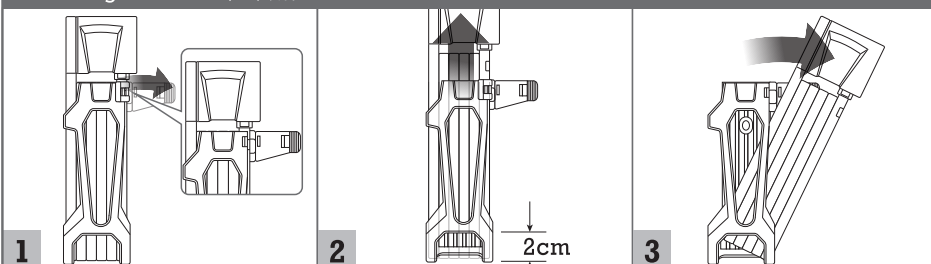


1 Place the lock at an angle to insert into the bottom of the bracket.
将锁体斜插入锁架底部。

2 As shown, straighten the lock in order to secure it into place.
如图所示, 将锁体完全推进锁架。

3 Fasten the buckle.
扣上搭扣。

Removing the lock 取出锁体



1 Open the buckle.
打开搭扣。

2 Pull the lock up about 2cm.
将锁体上拉约2cm。

3 Slide the lock out.
将锁体侧拉取出。

Installation position of the lock on a bike 自行车装车位置示范

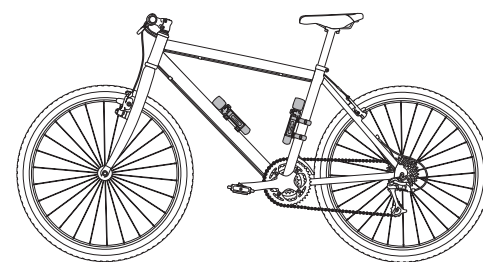


Image is for reference only.
此图为例范围, 仅供参考。

When in use 锁车示范



Image is for reference only.
此图为例范围, 仅供参考。