

Tysellin

CleverTag Card - User manual

➡ Connecting mobile phone



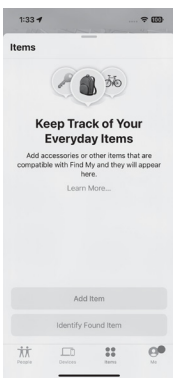
Press on

a blue light blinks and sound plays

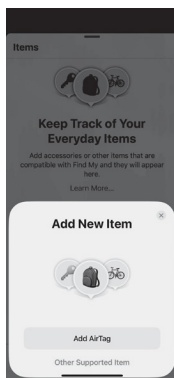


turn on the network, bluetooth and location on your iPhone

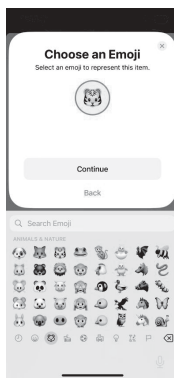
Open Find my app



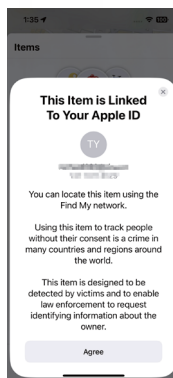
Select "Items" and then "Add Item"



Click on "Other supported item" When the phone or tablet discovers the CleverTag Card, click "Connect"



Give your Tysellin CleverTag Card the name you want, and choose a Emoji.

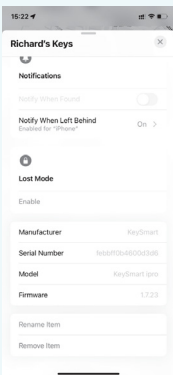


Agree to register the CleverTag Card to the Apple ID and wait for the process to complete.



When successfully connected click "finish" and then "Play Sound". The connected Card will play a sound and flash blue.

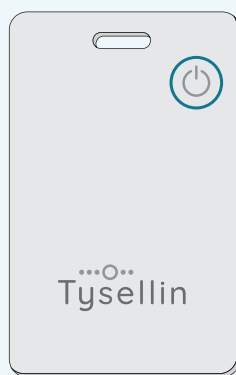
⚡ Disconnecting device



In the "FindMy" app, choose your CleverTag Card and click "Remove Item" at the bottom of the page.

The CleverTag Card will play an disconnecting sound.

OR



While connected, quickly press the button 5 times and hold the 5th until a reset tune and flashing blue light will appear. That's it.

🔄 Upgrade

1. In the "FindMy" app, click "Update available".
2. Click "Update" in the pop-up window.
3. Wait until update is complete.
4. Firmware version will automatically refresh.
5. When finished you will hear a sound.

🔌 Operation

Power off: Press and hold the button for at least 3 seconds, you will hear the power-off sound. ("Beep-Beep")

Power on: After power is off, press the button briefly to turn on power. A power-on tune will play and a blue light will flash.

Stanby check: When power is on, double click the button, the CleverTag Card will play a sound ("Beep") and flash blue light.

Factory reset: While the CleverTag Card is connected, quickly press the button 5 times, hold the 5th time until you hear a reset tune and a flashing blue light. This will clear all the local pairing information of the Tysellin CleverTag Card.

⚡ Charging



The Tysellin CleverTag Card has a built-in 100MAH polymer battery, which can be charged by any wireless charging base that meets the Qi standard.

When charging a red light will show. When fully charged a green light will appear. (a full cycle will take aprox. 1.5 hours)