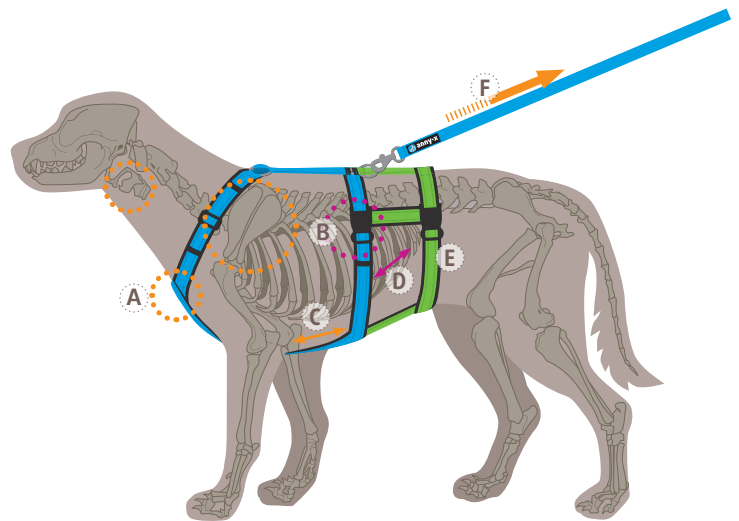
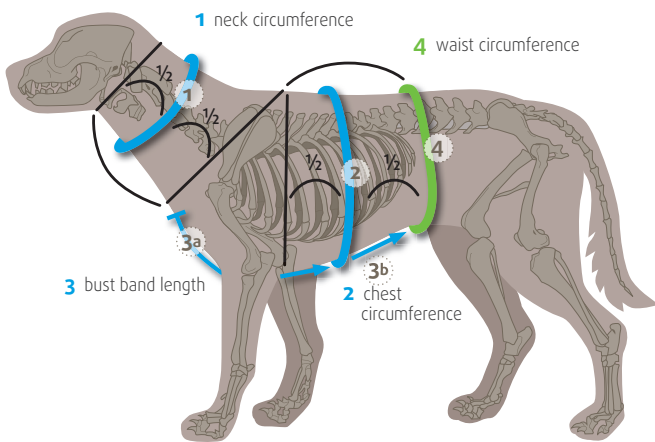




**anny·x**

**FIND THE RIGHT SIZE!**

**THAT FITS!**



# THAT'S HOW IT'S DONE! MEASURE FIRST.

The chest harness FUN is already available in some colours as an intermediate size.

CHEST HARNESS OPEN · SAFETY · SUCHHUND	-	XXS	XXS long	XS short	XS	XS long	S short	S	S long	M short	M	M long	L short	L	L long	XL short	XL	-	
<b>1</b> neck circumference (cm)		14 - 22		22 - 36		26 - 40		30 - 48		33 - 58		48 - 70							
tight-fitting, <b>in the middle</b> of the neck																			
<b>2</b> chest circumference (cm)		36 - 42		43 - 52		52 - 64		62 - 74		70 - 86		78 - 96							
<b>in the middle</b> of the chest																			
<b>3a</b> bust band length (cm) OPEN, SUCHHUND	-	16,5	19,5	16,5	19,5	23	19,5	23	30	23	30	35	30	35	38,5	35	38,5	-	
starting from the sternum, through the front legs, to the middle of the rib cage																			
<b>3b</b> bust band length (cm) SAFETY		21,5		26		31		40		46		-							
just directly behind the rib cage (narrowest part)																			
<b>4</b> waist circumference (cm) SAFETY		32 - 38		38 - 46		48 - 56		56 - 66		62 - 78		-							
weight (kg)		3 - 7		6 - 12		9 - 19		18 - 30		26 - 38		35 - 50							

The measurements include a tolerance of +/- 1 cm.

# THAT FITS! CHECK AFTERWARDS.

**A** The Y of the harness should sit on the sternum so that the shoulders and larynx are unimpeded.

**B** Two fingers should be able to fit between the chest strap and the dog's chest, so that it isn't too loose or too tight.

**C** The chest strap should fit with a large enough gap between the strap/band and the front legs to allow for unimpeded freedom of movement.

**D** When the harness is pulled, the chest strap should lie before the last rib.

**E** The waist belt lies directly behind the rib cage in the waist.

**F Important:** Make sure to also check each position when the harness is in use, so that the dog's movement is not restricted when the leash is pulled.