

# SeniorCom T1



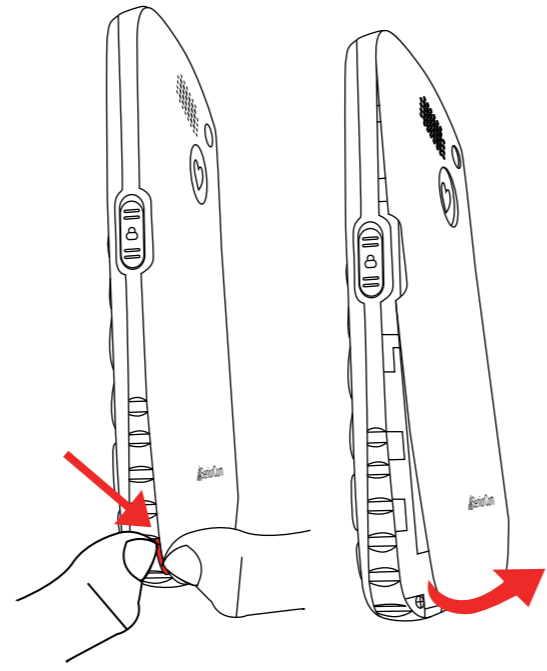
English P1-9  
Français P10-19  
Dutch P20-29

- Receiver
- LCD
- Left soft key
- Right soft key
- Up/down button
- Green button: Answer/make a call
- Red button
- Numeric keypad
- Numeric 0 button, or long pressing to switch normal or silent mode.
- 3.5mm audio jack (iPhone style)
- USB-C socket
- Flashlight LED
- Keypad locked
- Keypad unlocked
- Side button to turn on/off flashlight
- Side button--Volume +/-

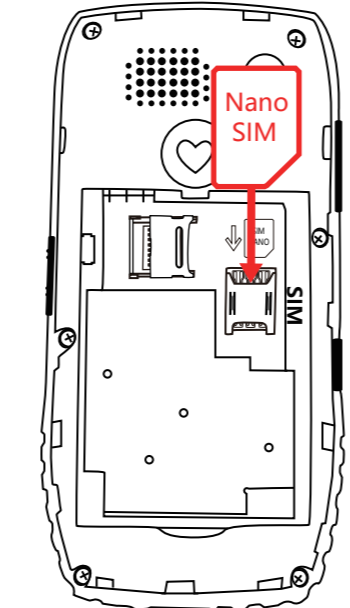


- Up/down button: -Navigation in software menu
- Up "to Messages shortcut, "down" to speed dial/ FM radio/ Alarm/Calendar/Bluetooth, etc.
- Green button: Answer/make a call
- Red button: -End a call
- Right soft key: -In standby mode, assigned with "Contacts" function-Exit menu or exit current operation
- Other assignments depending on the context

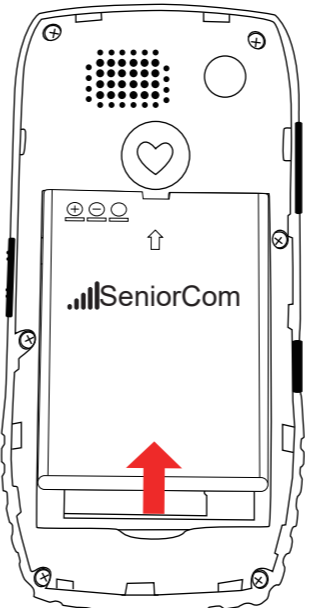
### How to open back cover?



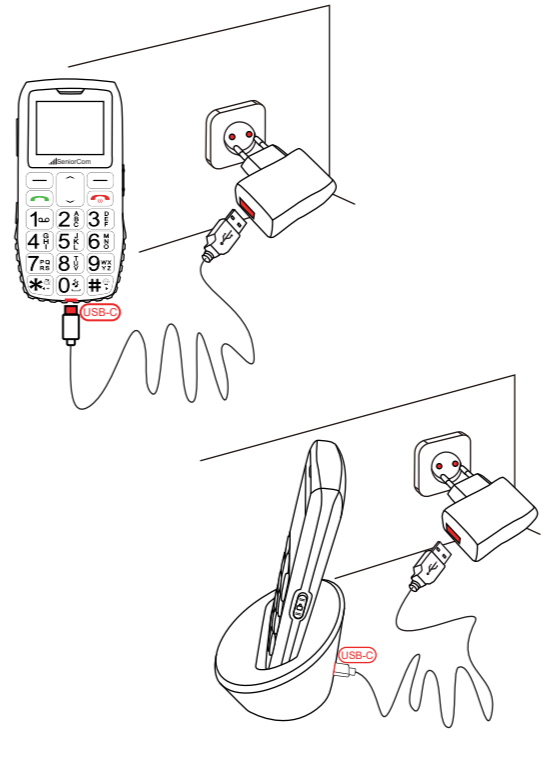
### How to insert Nano SIM card?



### Comment placer la batterie?



### Comment charger la batterie?



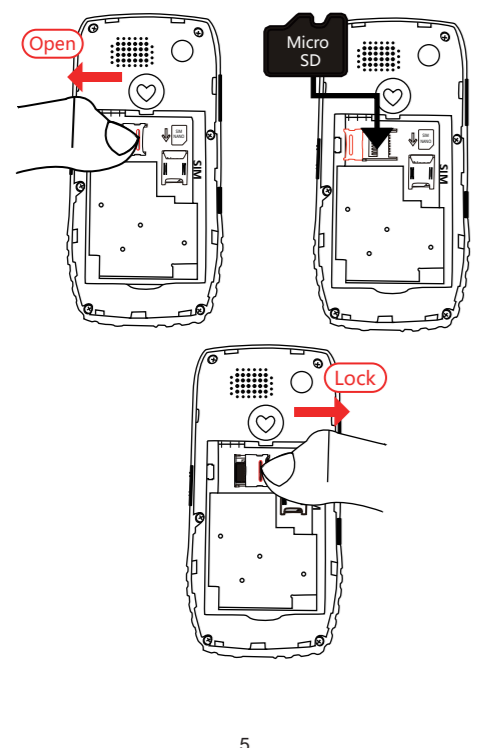
- Description de l'icône
- Afficher le signal actuel
  - Message non lu
  - Mode silencieux
  - Mode normal
  - Casque d'écoute branché
  - Lors de la mise en place de l'alarme
  - Bluetooth activé
  - État de la batterie

- Comment mettre sous tension?
- Comment mettre hors tension?
- Comment utiliser la lampe de poche?
- Comment utiliser la fonction SOS?

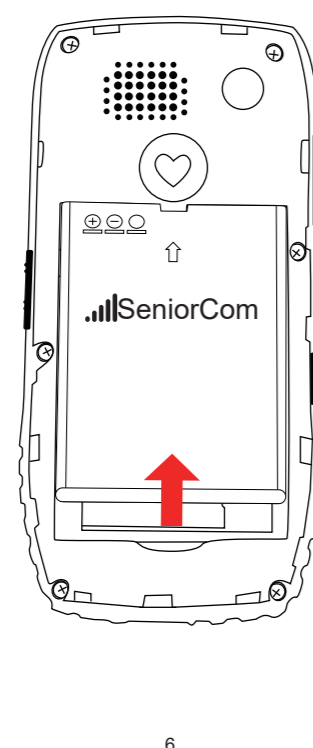
- Comment entrer les numéros abrégés, la radio FM, l'alarme, le calendrier, le Bluetooth, etc?
- Quel est le réseau utilisé par ce téléphone??
- Le téléphone est-il déverrouillé??
- L'emballage comprend-il des écouteurs??

# 正面

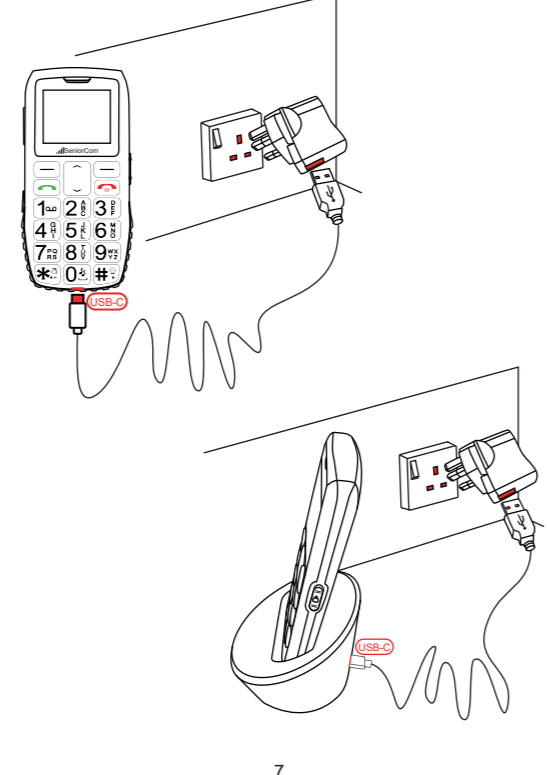
### How to insert Micro SD card?



### How to place the battery?



### How to charge the battery?



### Icon description

- Show actual signal
- Unread message
- Silent mode
- Normal mode
- Headphone plugged-in
- When alarm set up
- Bluetooth enabled
- Battery status

- How to power on?
- How to power off?
- How to use flashlight?
- How to use SOS function?

### Make a call

- Input telephone number and press left green button.
- Find a contact in phonebook and press left green button.
- Speed dial: "Down button" to "Shortcuts" --Speed dial --# 2 3 4 5 6 7 8 9 --choose one or some to set from phonebook or input new numbers.

# 反面

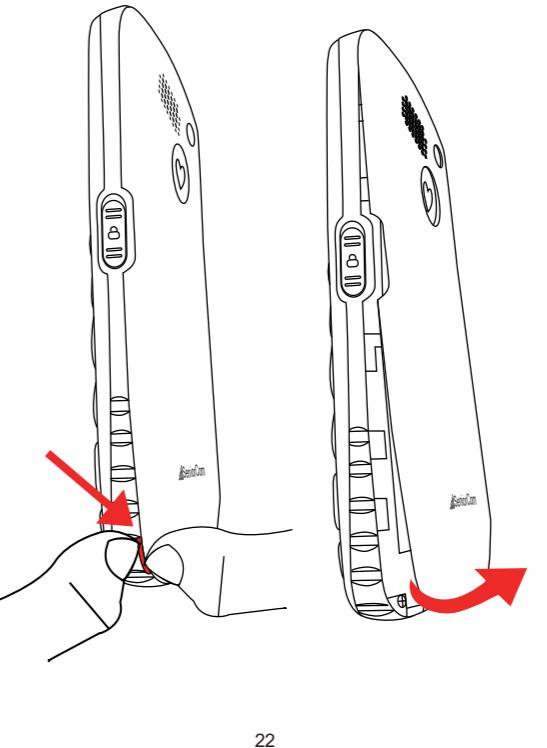
### 1. Ontvanger

- Ontvanger
- LCD
- Linker softkey
- Rechter softkey
- Volume/Voice settings
- Common questions

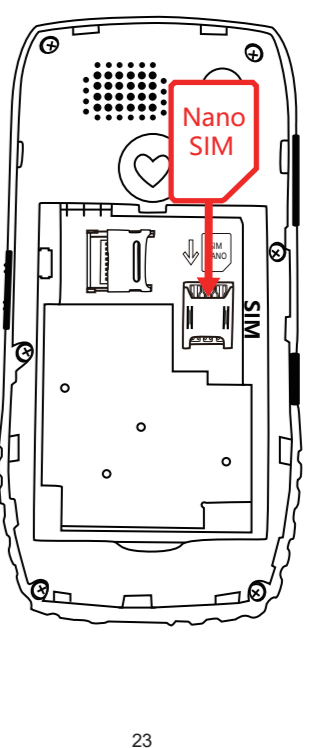
### 5. Knop omhoog/omlaag:

- Knop omhoog/omlaag
- Numeriek toetsenbord
- Toetsenbord vergrendeld
- Toetsenbord ontgrendeld
- Knop aan de zijkant om zaklamp aan/uit te zetten
- Zijknop--Volume +/-

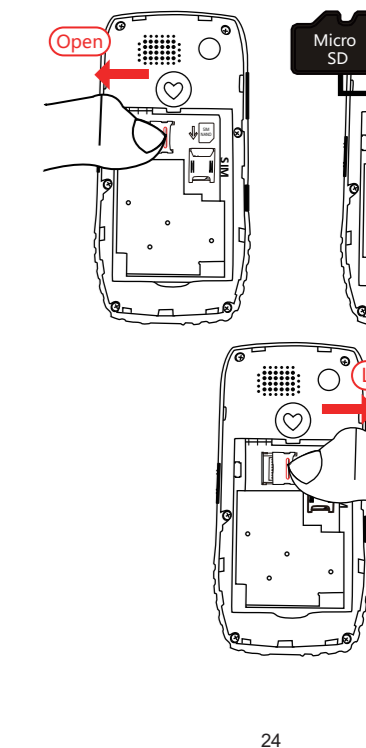
### Hoe de achterklep openen?



### Hoe plaats ik een Nano SIM-kaart?



### Hoe plaats ik een Micro SD-kaart?



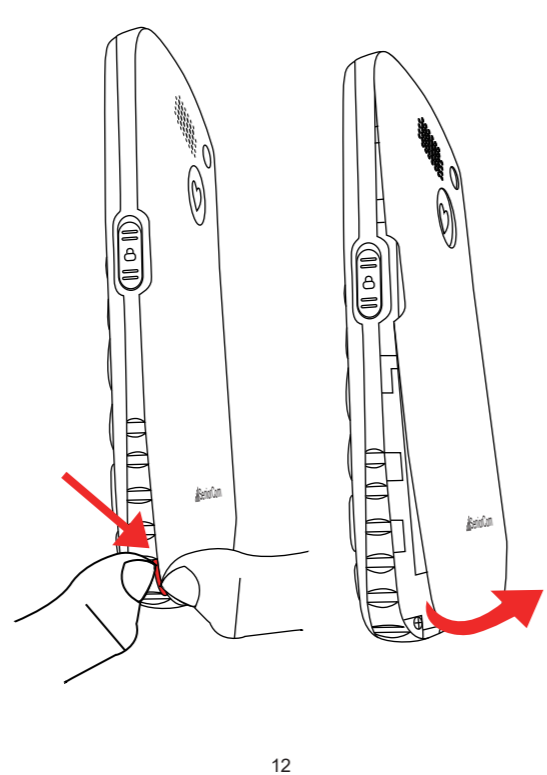
### 1. Récepteur

- Récepteur
- LCD
- Touche de fonction gauche
- Touche de fonction droite

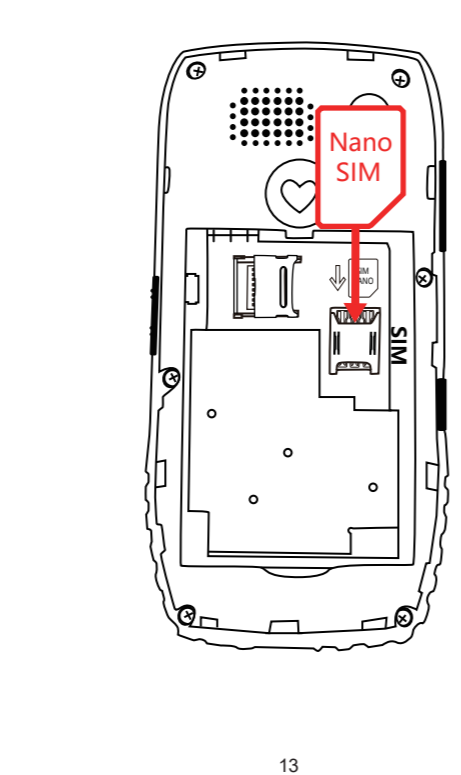
### 5. Bouton haut/bas :

- Bouton haut/bas
- Clavier numérique
- Le bouton numérique 0, ou une pression longue, permet de passer du mode normal au mode silencieux.
- Prise USB-C
- Lampe de poche LED
- Clavier verrouillé
- Clavier déverrouillé
- Bouton latéral pour allumer/éteindre la lampe de poche
- Bouton latéral--Volume +/-

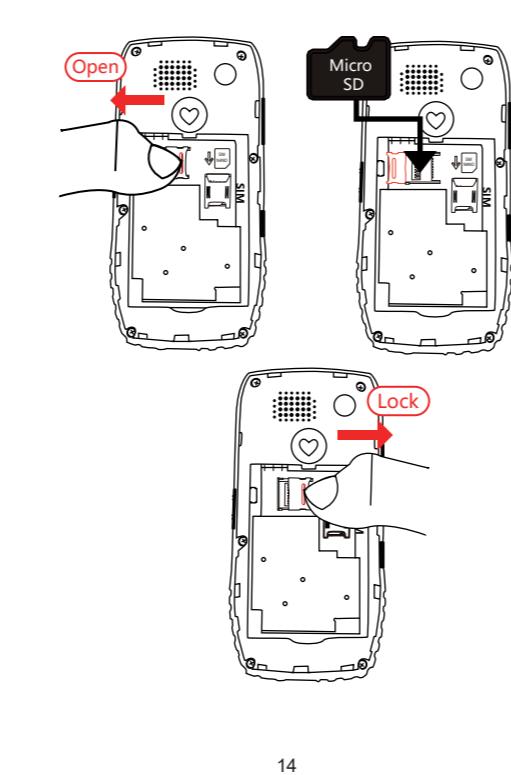
### Comment ouvrir la couverture arrière?



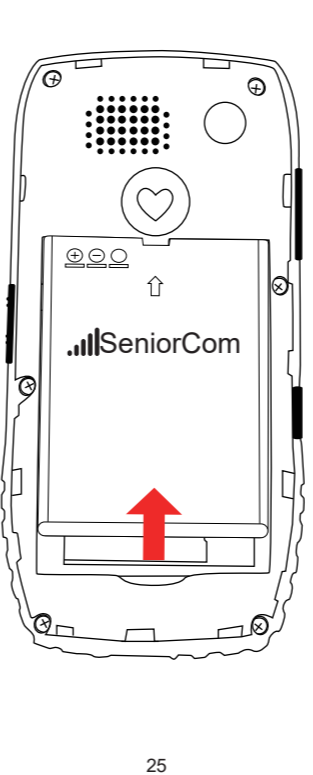
### Comment insérer une carte Nano SIM?



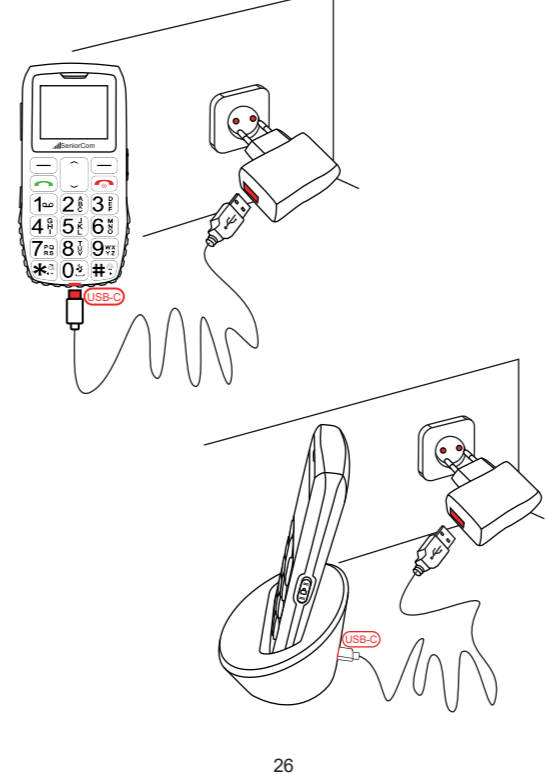
### Comment insérer une carte Micro SD?



### Hoe plaats ik de batterij op?



### Hoe laad ik de batterij op?



### Beschrijving pictogram

- Toon actueel signaal
- Ongelezen bericht
- Stille modus
- Normale modus
- Hoofdtelefoon aangesloten
- Wanneer het alarm is ingesteld
- Bluetooth ingeschakeld
- Batterijstatus

- Op welk netwerk werkt deze telefoon?
- Is de telefoon ontgrendeld?
- Is er een oortelefoon in de verpakking?
- Wachtwoord
- Veelgestelde vragen

### 3. Op welk netwerk werkt deze telefoon?

- Op welk netwerk werkt deze telefoon?
- Is de telefoon ontgrendeld?
- Is er een oortelefoon in de verpakking?
- Wachtwoord
- Veelgestelde vragen