

SIMPLE SILENCE



Black Silence



25% gas
quota of R410a



Average-COP 10
90% free energy



Quiet as a fridge

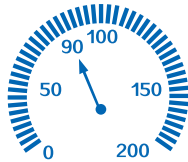


SIMPLE SILENCE

Thanks to the revolutionary air-stream design & stepless DC inverter system of Inverquark technology, the sound level of Black Silence is as low as a fridge.



Mitsubishi Twin-Rotary
Inverter Compressor



Stepless Comfort
Speed Conversion



DC Brushless
Fan Motor

12dB(A) lower than traditional on/off HP.



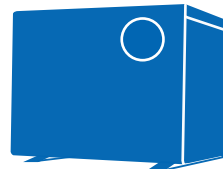
43 dB(A)
1m distance



Fridge



Average Sound Level is 43 dB(A)
at 1 meter in front of Black Silence.



UNIQUE SLAB DESIGN INVERTER



Simple Classic
Touch Controller



Garden Friendly Flat
Surface Design



Classic Aluminum-Alloy
Anti-Rusting



Designed for down to Air - 10°C Operation Extend your pool season!



-10°C



Features of Black Silence

Mitsubishi
DC

DC Twin-Rotary Inverter compressor of Mitsubishi.

EEV

EEV technology: 10 times flexibility to adjust the gas flow and increase the COP by up to 20%.



Hot gas defrosting with Saginomiya 4-way valve for quick & efficient defrosting.



Twisted titanium heat exchanger: 40% higher efficiency than normal titanium heat exchanger.

Modèle

BS7

PERFORMANCE CONDITION: Air 27°C/ Water :

Heating capacity (kW) 7.0

COP Range 14~7

Average COP at 50% Speed 10.5

PERFORMANCE CONDITION: Air 15°C/ Water :

Heating capacity (kW) 5.0

COP Range 7.3~4

Average COP at 50% Speed 6.5

PERFORMANCE CONDITION: Air 35°C/ Water :

Cooling capacity (kW) 3.5

TECHNICAL SPECIFICATIONS

Advised pool volume (m3) * 15~3

Operating air temperature (C°)

Compressor

Casing

Heat exchanger

Power supply

Rated input power (kW) 0.14~1

Input power at 50% Speed (kW) 0.38

Rated input current (A) 0.61~4

Maximum input current (A) 7.5

Power cord (mm²)** 3x1.

Sound level at 1m dB (A) 36.5~4

Sound level 50% at 1m dB (A) 39.2

Sound level at 10m dB (A) 16.5~2

Advised water flux (m³/h) 2~4

Water connection (mm)

Net weight (kg) 52

Net dimensions LxWxH (mm) 890*44C

BS70 BS90 BS110 BS130 BS150 BS170 BS210 BS280 BS280S BS350S

Water 27°C/ Humid. 80%

7.0	9.0	11.0	13.0	15.0	17.5	21.0	28.0	28.0	35.2
14~7.2	14~7.2	14~7	14.5~7.0	15~7	15~6.7	14.8~7.1	16~7.2	15.8~7.1	15.5~7
10.5	10.5	10.3	10.5	11.0	11.0	11.0	11.1	10.8	10.5

Water 26°C/ Humid. 70%

5.0	6.6	7.7	9.0	10.5	12.5	14.5	19.0	19.0	24.2
7.3~4.5	7.5~4.8	7.3~4.7	7.5~5	7.7~4.9	7.7~5.0	7.1~5.0	8~5.0	8~5.0	7.5~5.0
6.5	6.5	6.6	6.4	6.8	6.6	6.6	6.6	6.5	6.6

Water 28°C/ Humid. 80%

3.5	4.4	5.4	6.3	7.4	8.0	10.1	11.9	11.9	16.1
15~30	20~45	30~55	35~65	40~70	40~80	50~95	60~120	60~120	85~160

-10 C ~ -43 C

Mitsubishi deux étages

Aluminium

Titane spiralé

230V 1Ph

400V 3Ph

1.14~1.12	0.19~1.38	0.22~1.64	0.26~1.8	0.28~2.15	0.33~2.50	0.38~2.90	0.49~3.80	0.49~3.80	0.65~4.84
0.38	0.51	0.58	0.7	0.77	0.95	1.1	1.44	1.46	1.84
1.61~4.83	0.83~5.98	0.96~7.13	1.13~7.83	1.22~9.32	1.44~10.9	1.66~12.7	2.15~16.53	0.71~5.51	0.95~7.01
7.5	8.5	10	12	13.5	15	17	20	7	9.5
3x1.5	3x2.5	3x2.5	3x2.5	3x2.5	3x4	3x4	3x6	5x2.5	5x2.5
36.5~46.0	36.8~46.2	36.6~47.9	40.1~48.7	39.3~52	41.1~51.8	38.9~52.2	41.5~52.9	41.5~52.9	40.6~52.6
39.2	39.4	41.3	43.7	44	44.5	44.4	46.4	47	46.1
16.5~26.0	16.8~26.1	16.6~27.9	20.1~28.7	19.3~32	21.1~31.8	18.9~32.2	21.5~32.9	21.5~32.9	20.6~32.6
2~4	2~4	3~5	4~6	5~7	6~8	8~10	10~12	10~12	12~18

50

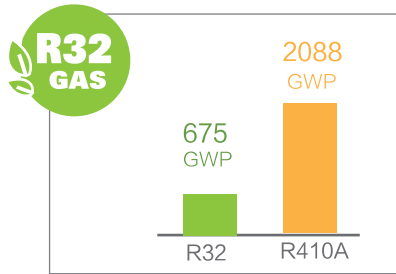
52	53	55	57	61	66	72	91	96	130
10*440*658	890*440*658	890*440*658	890*440*658	970*440*658	1060*440*658	1060*440*758	1060*440*958	1060*440*958	136*544*958

Remarks: * The data above is only for reference. For specific data, please refer to the nameplate on the unit.
 * Advised pool volume applies to a private pool with isothermal cover, from April to September.

1

Eco-friendly R32

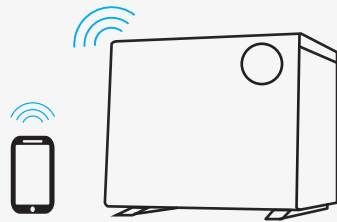
32% GWP comparing to R410A
25% CO2 carbon consumption
25% quota cost.



2

Smart WIFI Control (Optional)

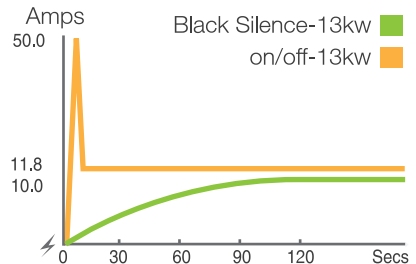
With Black Silence's smart APP control you can check or control your Black Silence anywhere.



3

Full Protection on Electrical system

By DC inverter compressor, Black Silence will start from 0 Amps to rated Amps steadily. There is no rush to the house electricity system.



4

Wide Voltage Application

Self-adjustment to fit in unstable power supply, therefore voltage range can be 180~260V.



180~260V

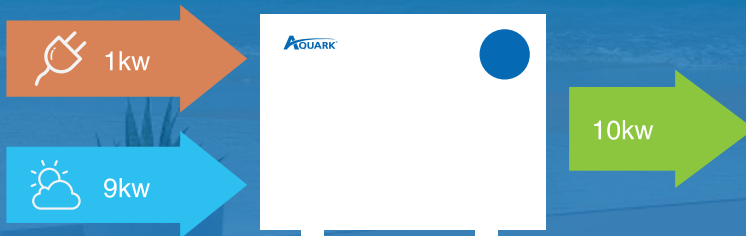
Average-COP 10

COP range 15.5-6.4 (air 27 °C / water 27°C)

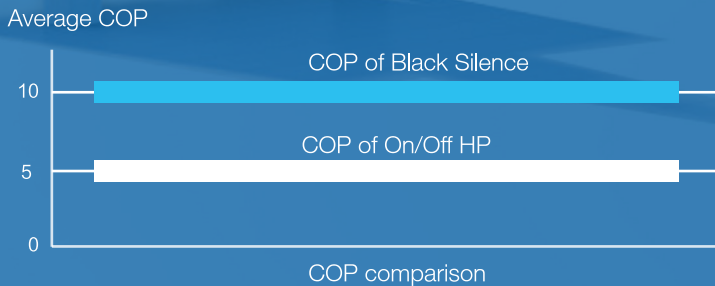
When maintaining pool temperature at 95% of pool season, the HP is running by 50% capacity which leads to the best energy saving performance and most silent pool environment.

90% free energy

Thanks to Inverquark technology, Black Silence provides average 90% free energy from ambient air.




Double energy saving than on/off hp.





 www.allforpools.be

 +32 10 24 39 29

 Avenue Zénobe Gramme 25,
1300 Wavre
Belgium