

# INSTALLATION MANUAL

## Q13500 / Q13501 - MILTON TRIMLESS AR111

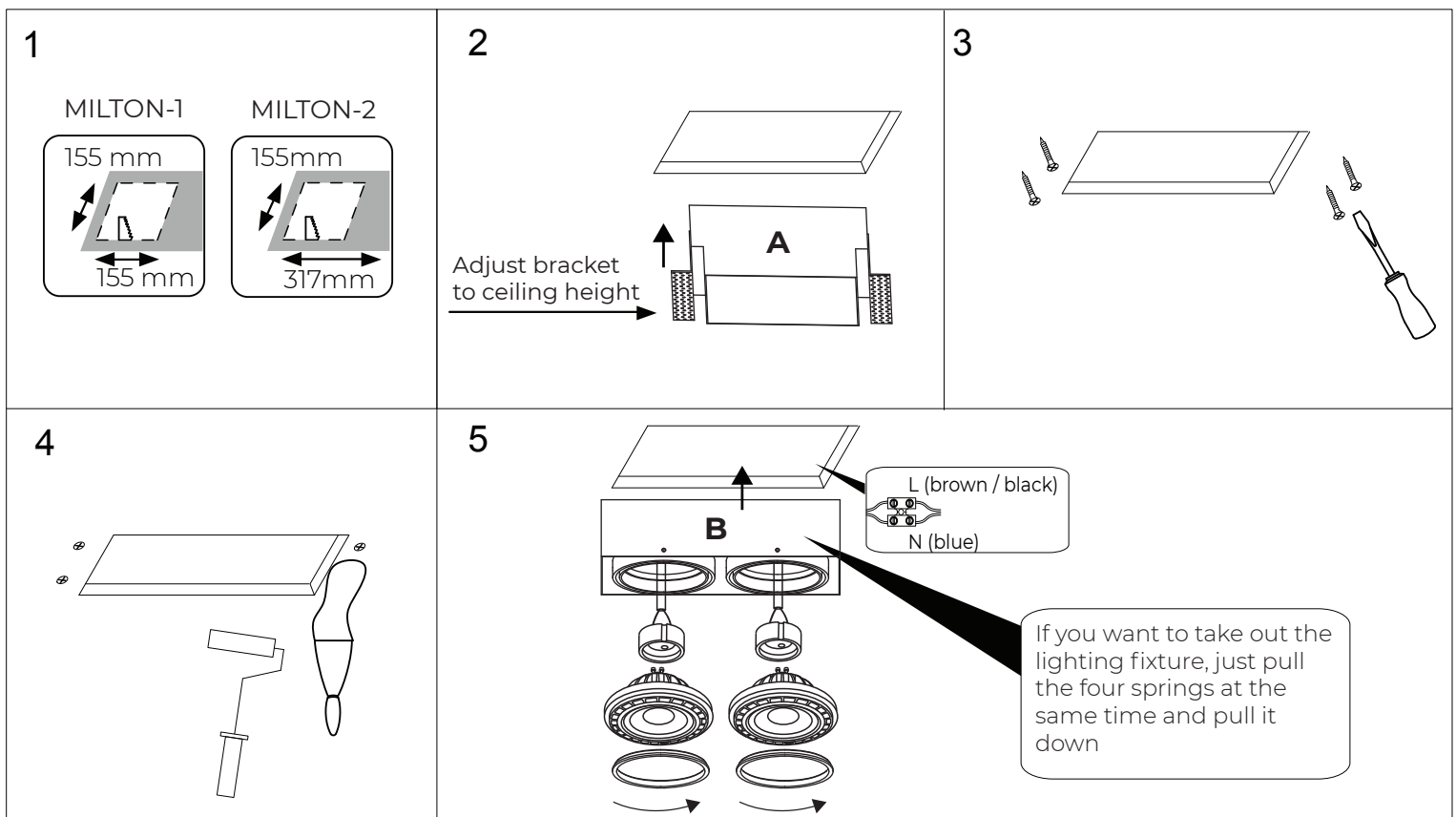
# DMQ



AR111 | IP20 | MAX. 50W x2 | G53 | GU10

### Installation Instructions

- Switch off the main electricity before installation
- This product consists of 2 parts:
  - Part A: This is the lighting bracket to fix in the ceiling
  - Part B: This is the AR111 lamp holder
- Cut the hole (figure 1)
- Adjust the height of the mounting bracket according to the ceiling thickness. (figure 2)
  - TIP: make sure to have 3-4mm plaster height for smooth finish
  - TIP2: Remove the brackets, turn 180° and mount again, they are wrong mounted for better packaging.
- Put the fitting holder into the ceiling hole and fix using screws (figure 3)
- Finish with plaster and paint (figure 4)
- Connect power wire and grounding, insert AR111 lamps and slide the lighting fixture in the fitting holder (figure 5)
- Switch on the main electricity



### Warnings:

1. Disconnect the electricity before installation
2. Make sure that the product is installed properly before connecting to electricity
3. Do not cover the fitting
4. Maintenance and installation should only be carried out by a professional electrician



View this product and manual  
online by scanning this QR code

DMQ Trimless Milton AR111 1 - Q13500  
DMQ Trimless Milton AR111 2 - Q13501