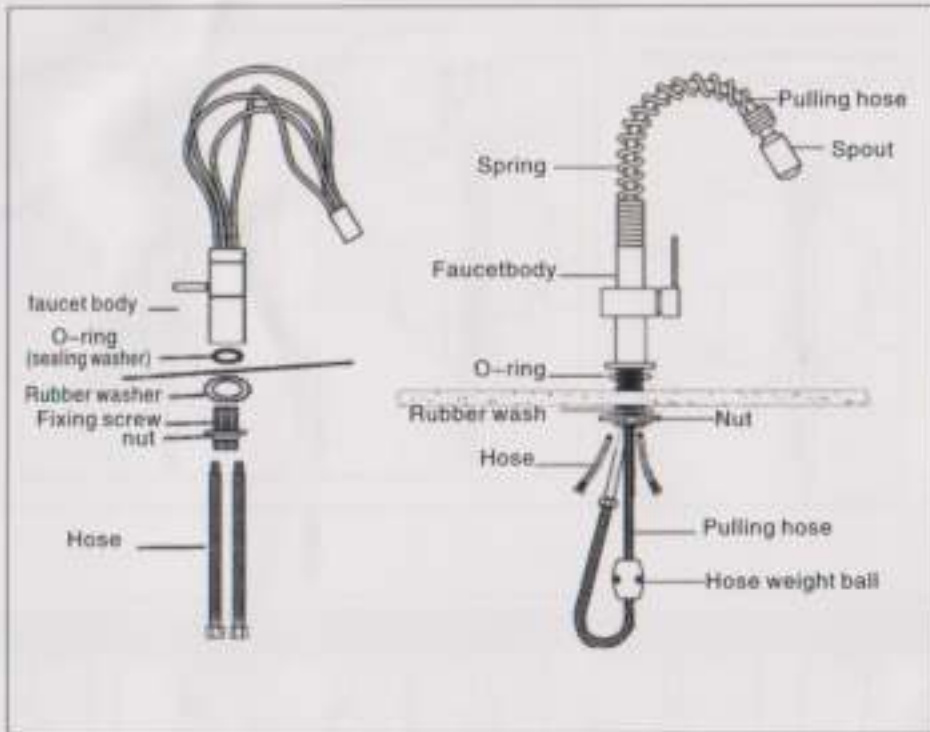

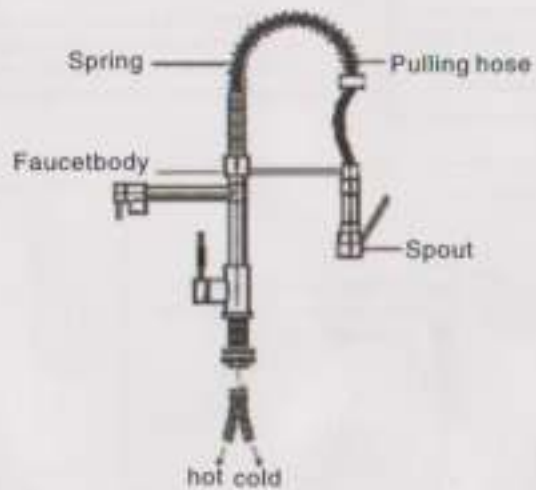


installation steps



 This installation steps is applied to one hole bathroom faucet with two screw bolt, for example:



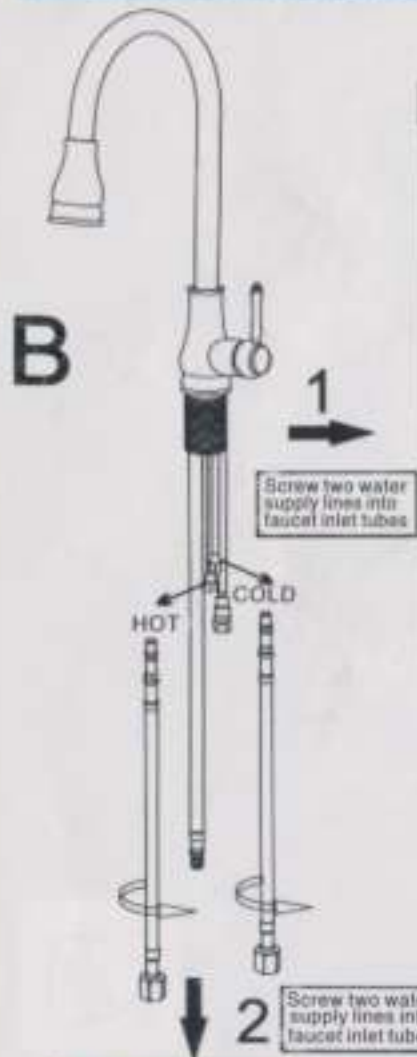
installation instructions

SANITARY WARES



Kitchen Faucet

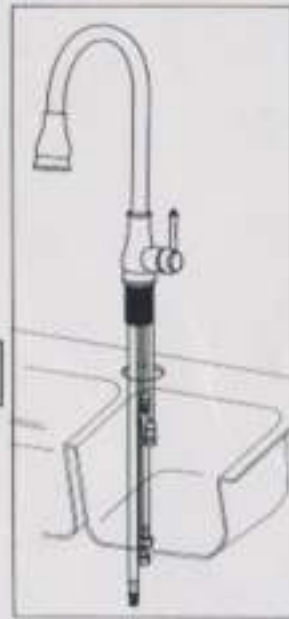
B: Pull-out/Pull-down spray kitchen faucet



Screw two water supply lines into faucet inlet tubes

Screw two water supply lines into faucet inlet tubes

1: Without Deck plate



Insert the faucet supply inlet tubes, water supply lines and mounting shank through the hole in sink.



From underneath sink, feed the plastic washer, metal washer and mounting nut over the water supply lines, faucet inlet tubes, pull-out hose and mounting shank. Thread the mounting nut onto the mounting shank.

Tighten the mounting nut to the underside of the sink.

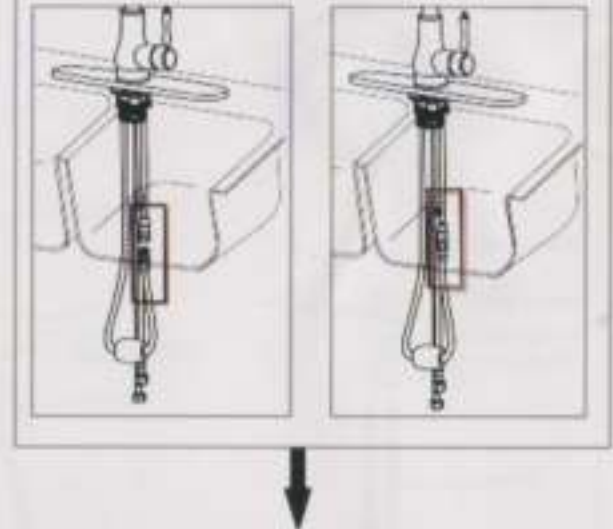
Tighten the mounting nut retaining screw until faucet is firmly secured to sink.

Kitchen Faucet

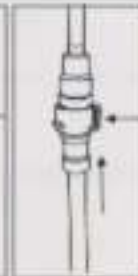
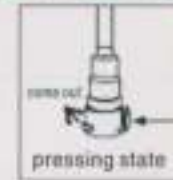
Attach weight to the pull-out hose using screws at the lowest point on the pull-out hose.



Attaching the pull-out hose



Attaching the pull-out hose



NOTE

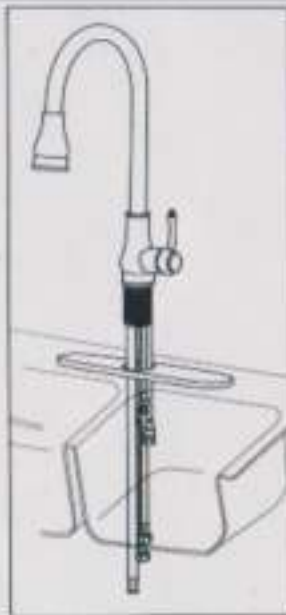
How to take off the pull-out hose: Keep pressing the button of quick connector with fingers. At the same time, pull the End of pull-out hose upward into the quick connector, until unable to push any further. Pull down the pull-out hose to ensure they connect well.

Keep pressing this button of quick connector with fingers. At the same time, push the End of pull-out hose upward into the quick connector, until unable to push any further. Pull down the pull-out hose to ensure they connect well.

2: With Deck plate



Ensure that plastic putty plate is pressed onto deck plate. Install the deck plate over the holes in sink.



Insert the faucet supply inlet tubes, water supply lines and mounting shank through the hole in the deck plate.



From underneath sink, feed the plastic washer, metal washer and mounting nut over the water supply lines, faucet inlet tubes, pull-out hose and mounting shank. Thread the mounting nut onto the mounting shank.

Tighten the mounting nut to the underside of the sink.



Ensure the soap dispenser to sink by mounting sink and mounting nut.

