

How to use the LED ALLY app

Scan for more details and video tutorials.



Use the Lezyne LED Ally app to wirelessly customize and control compatible Smart Connect LED lights.

Download the free Lezyne LED Ally App to your phone.

• Google Play for Android or App Store for iPhone.

• Open up the app.



SCAN FOR DEVICES



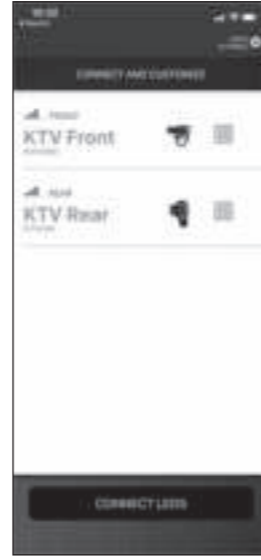
- Click on "Scan for Devices."
- If connecting for the first time, be sure the Smart Connect lights are turned on and within two (2) meters of the phone.

- Select the LEDs you want to pair with and tap "CONNECT LEDS."



- To remove a light from the menu, swipe on it from right to left and tap "Delete."
- To program the front/rear lights independently, tap the green square icon to break the link between the two.

CONNECT AND RENAME



- When connecting for the first time it is required to give your lights a custom name.

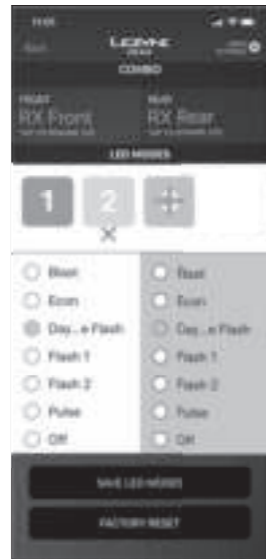
MANAGE YOUR LEDS



- ⏻ : on / off
- 📶 : Signal
- 🔋 : Battery usage

- Program up to four modes for each LED and up to four mode sets for the pair.
- Tap the numbers to toggle through the programmed modes.
- Tap "PROGRAM LED MODES" to customize your LEDs.
- Tap "MANAGE CONNECTIONS" to return to the connections page.

CUSTOM PROGRAM LED MODES



- Tap the (X) or (+) symbols to add or remove mode-sets.
- Customize the mode-sets with the available modes below.
- Tap "SAVE LED MODES" when finished.
- The front LED will now control the rear LED when toggling through modes.
- Tap "FACTORY RESET" to disconnect your LEDs and return them to their factory settings.

- If programming a front or rear individually, simply program up to four modes and tap save.

MORE INFORMATION

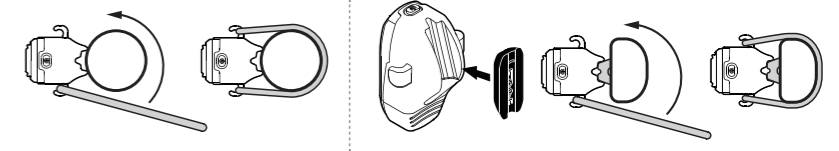


- Tap VIEW TUTORIAL for a detailed video tutorial.

For more information on Lezyne products, visit: www.lezyne.com

KTV Pro Smart Rear

Mounting

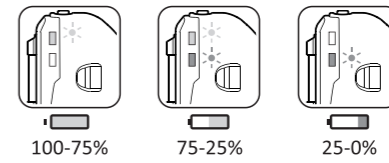


Operation

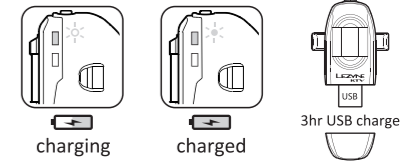
	BLAST	ECONOMY	DAY FLASH	FLASH 1	FLASH 2
	20 LUMENS	3 LUMENS	75 LUMENS	25 LUMENS	10 LUMENS
	4:00 h:min	18:00 h:min	10:00 h:min	8:45 h:min	19:30 h:min



Battery Indicator



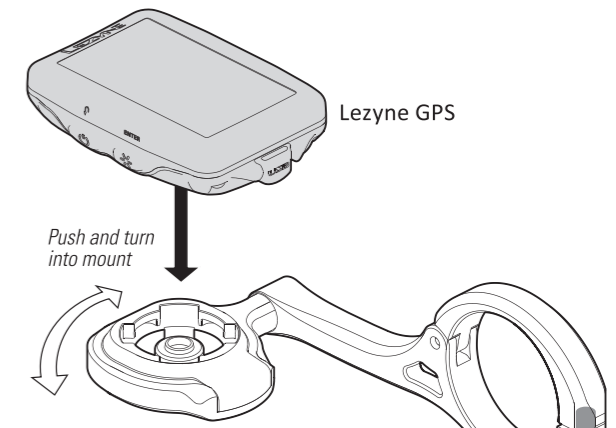
Charging



More Information

For more information on Lezyne products, visit: www.lezyne.com

GPS Forward CNC Mount



- Tightening torque : 1-2 N-m
- Par de apriete : 1-2 N-m
- Couple de serrage : 1-2 N-m
- Anzugsdrehmoment : 1-2 N-m
- 締め付けトルク : 1-2 N-m

****APP must be closed for GPS connection**

How to pair Lezyne Smart LED with Lezyne GPS computer



- ① Back out of "MENU" screen to the ride pages to control lights, new "SMART CONTROLL" pages will be available.
- ② Only one device can be connected to a smart light at one time (Phone APP or GPS), power off the GPS for Smart light App programming.