

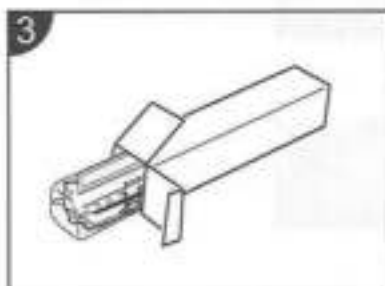
LASER TONER CARTRIDGE INSTRUCTION



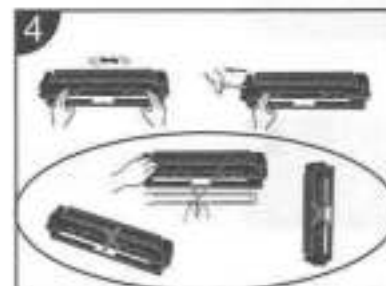
1 Take out the used up toner kits from the drum unit.



2 Put the used up toner kits into the black bag.



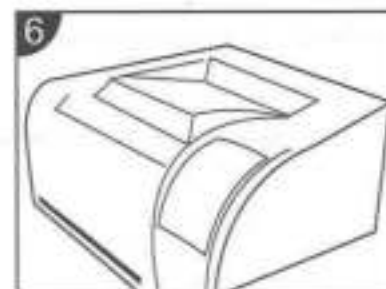
3 Take out the new toner kits for changing.



4 Please shake the cartridge for several times, and take out the seal and take off the drum shroud. The cartridge must be held horizontally in the process.



5 Please hold the cartridge by the handle and place it horizontally into the printer.



6 Close the print cover.

Operation Instruction For OEM Cartridge Policy

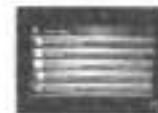


The OEM has added a function to block the use of compatible consumables, if this function is on your printer, the cartridge may not be recognized.
(Printer Models: CF226, CF228, CF287, CF400, CF410 and CF360 series).

To shut off this function, please see the operation instruction below.



Go to the main page and click "Setup".

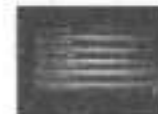


02

Go to Setup Menu and click "System Setup".



Go to System Setup and click "Supply Settings".



04

Go to Supply Settings and click "Cartridge Policy".



Go to Cartridge Policy and click "Off" to shut off this function. Then please restart the printer.

For further information, please contact us.

All trademarks, registered trademarks, product names and service marks are the property of their respective owners.