



REPUBLIC OF
GAMERS

ROG STRIX
XG32VQ XG35VQ
CURVED GAMING MONITOR

ASUS

Table of contents

- Notices iii
- Safety information iv
- Care & Cleaning vi
- 1.1 Welcome 1-1
- 1.2 Package contents..... 1-1
- 1.3 Assembling the monitor 1-2
- 1.4 Cable management 1-3
- 1.5 Connect cables..... 1-4
 - 1.5.1 Rear of the LCD monitor 1-4
- 1.6 Monitor introduction 1-6
 - 1.6.1 Using the Controls button 1-6
- 2.1 Adjusting the monitor 2-1
 - 2.2 Detaching the arm/stand (for VESA wall mount) 2-2
- 3.1 OSD (On-Screen Display) menu 3-1
 - 3.1.1 How to reconfigure..... 3-1
 - 3.1.2 OSD Function Introduction..... 3-2
- 3.2 Aura 3-9
- 3.3 Specifications..... 3-11
- 3.3 Troubleshooting (FAQ)..... 3-13
- 3.4 Supported Timing List..... 3-14

Copyright © 2017 ASUSTeK COMPUTER INC. All Rights Reserved.

No part of this manual, including the products and software described in it, may be reproduced, transmitted, transcribed, stored in a retrieval system, or translated into any language in any form or by any means, except documentation kept by the purchaser for backup purposes, without the express written permission of ASUSTeK COMPUTER INC. ("ASUS").

Product warranty or service will not be extended if: (1) the product is repaired, modified or altered, unless such repair, modification or alteration is authorized in writing by ASUS; or (2) the serial number of the product is defaced or missing.

ASUS PROVIDES THIS MANUAL "AS IS" WITHOUT WARRANTY OF ANY KIND, EITHER EXPRESS OR IMPLIED, INCLUDING BUT NOT LIMITED TO THE IMPLIED WARRANTIES OR CONDITIONS OF MERCHANTABILITY OR FITNESS FOR A PARTICULAR PURPOSE. IN NO EVENT SHALL ASUS, ITS DIRECTORS, OFFICERS, EMPLOYEES OR AGENTS BE LIABLE FOR ANY INDIRECT, SPECIAL, INCIDENTAL, OR CONSEQUENTIAL DAMAGES (INCLUDING DAMAGES FOR LOSS OF PROFITS, LOSS OF BUSINESS, LOSS OF USE OR DATA, INTERRUPTION OF BUSINESS AND THE LIKE), EVEN IF ASUS HAS BEEN ADVISED OF THE POSSIBILITY OF SUCH DAMAGES ARISING FROM ANY DEFECT OR ERROR IN THIS MANUAL OR PRODUCT.

SPECIFICATIONS AND INFORMATION CONTAINED IN THIS MANUAL ARE FURNISHED FOR INFORMATIONAL USE ONLY, AND ARE SUBJECT TO CHANGE AT ANY TIME WITHOUT NOTICE, AND SHOULD NOT BE CONSTRUED AS A COMMITMENT BY ASUS. ASUS ASSUMES NO RESPONSIBILITY OR LIABILITY FOR ANY ERRORS OR INACCURACIES THAT MAY APPEAR IN THIS MANUAL, INCLUDING THE PRODUCTS AND SOFTWARE DESCRIBED IN IT.

Products and corporate names appearing in this manual may or may not be registered trademarks or copyrights of their respective companies, and are used only for identification or explanation and to the owners' benefit, without intent to infringe.

Notices

Federal Communications Commission Statement

This device complies with Part 15 of the FCC Rules. Operation is subject to the following two conditions:

- This device may not cause harmful interference.
- This device must accept any interference received including interference that may cause undesired operation.

This equipment has been tested and found to comply with the limits for a Class B digital device, pursuant to Part 15 of the FCC Rules. These limits are designed to provide reasonable protection against harmful interference in a residential installation. This equipment generates, uses and can radiate radio frequency energy and, if not installed and used in accordance with manufacturer's instructions, may cause harmful interference to radio communications. However, there is no guarantee that interference will not occur in a particular installation. If this equipment does cause harmful interference to radio or television reception, which can be determined by turning the equipment off and on, the user is encouraged to try to correct the interference by one or more of the following measures:

- Reorient or relocate the receiving antenna.
- Increase the separation between the equipment and receiver.
- Connect the equipment to an outlet on a circuit different from that to which the receiver is connected.
- Consult the dealer or an experienced radio/TV technician for help.



The use of shielded cables for connection of the monitor to the graphics card is required to assure compliance with FCC regulations. Changes or modifications to this unit not expressly approved by the party responsible for compliance could void the user's authority to operate this equipment.

Canadian Department of Communications Statement

This digital apparatus does not exceed the Class B limits for radio noise emissions from digital apparatus set out in the Radio Interference Regulations of the Canadian Department of Communications.

This class B digital apparatus complies with Canadian ICES-003.

This Class B digital apparatus meets all requirements of the Canadian Interference-Causing Equipment Regulations.

Cet appareil numérique de la classe B respecte toutes les exigences du Règlement sur le matériel brouiller du Canada.

Safety information

- Before setting up the monitor, carefully read all the documentation that came with the package.
- To prevent fire or shock hazard, never expose the monitor to rain or moisture.
- Never try to open the monitor cabinet. The dangerous high voltages inside the monitor may result in serious physical injury.
- If the power supply is broken, do not try to fix it by yourself. Contact a qualified service technician or your retailer.
- Before using the product, make sure all cables are correctly connected and the power cables are not damaged. If you detect any damage, contact your dealer immediately.
- Slots and openings on the back or top of the cabinet are provided for ventilation. Do not block these slots. Never place this product near or over a radiator or heat source unless proper ventilation is provided.
- The monitor should be operated only from the type of power source indicated on the label. If you are not sure of the type of power supply to your home, consult your dealer or local power company.
- Use the appropriate power plug which complies with your local power standard.
- Do not overload power strips and extension cords. Overloading can result in fire or electric shock.
- Avoid dust, humidity, and temperature extremes. Do not place the monitor in any area where it may become wet. Place the monitor on a stable surface.
- Unplug the unit during a lightning storm or if it will not be used for a long period of time. This will protect the monitor from damage due to power surges.
- Never push objects or spill liquid of any kind into the slots on the monitor cabinet.
- To ensure satisfactory operation, use the monitor only with UL listed computers which have appropriate configured receptacles marked between 100 ~ 240V AC.
- The socket-outlet shall be installed near the equipment and shall be easily accessible
- If you encounter technical problems with the monitor, contact a qualified service technician.
- Provide an earthing connection before the mains plug is connected to the mains. And, when disconnecting the earthing connection, be sure to disconnect after pulling out the mains plug from the mains.

- Please use ADP-90YD B of DELTA adapter.

WARNING

Usage of other than specified head- or earphones can result in hearing loss due to excessive sound pressures.

Restriction on Hazardous Substances statement (India)

This product complies with the “India E-Waste (Management) Rules, 2016” and prohibits use of Lead, Mercury, Hexavalent Chromium, polybrominated biphenyls(PBBs) and polybrominated diphenyl ethers(PBDEs) in concentration exceeding 0.1% by weight in homogenous materials and 0.01% by weight in homogenous materials for cadmium. except of exemptions listed in Schedule 2 of the Rule.

Made in China

HDMI™
HIGH-DEFINITION MULTIMEDIA INTERFACE

EAC

Care & Cleaning

- Before you lift or reposition your monitor, it is better to disconnect the cables and power cord. Follow the correct lifting techniques when positioning the monitor. When lifting or carrying the monitor, grasp the edges of the monitor. Do not lift the display by the stand or the cord.
- Cleaning. Turn your monitor off and unplug the power cord. Clean the monitor surface with a lint-free, non-abrasive cloth. Stubborn stains may be removed with a cloth dampened with mild cleaner.
- Avoid using a cleaner containing alcohol or acetone. Use a cleaner intended for use with the LCD. Never spray cleaner directly on the screen, as it may drip inside the monitor and cause an electric shock.



This symbol of the crossed out wheeled bin indicates that the product (electrical, electronic equipment, and mercury-containing button cell battery) should not be placed in municipal waste.

Please check local regulations for disposal of electronic products.

AAAA yönetmeliğine uygundur

The following symptoms are normal with the monitor:

- The screen may flicker during the initial use due to the nature of the fluorescent light. Turn off the Power Switch and turn it on again to make sure that the flicker disappears.
- You may find slightly uneven brightness on the screen depending on the desktop pattern you use.
- When the same image is displayed for hours, an afterimage of the previous screen may remain after switching the image. The screen will recover slowly or you can turn off the Power Switch for hours.
- When the screen becomes black or flashes, or cannot work anymore, contact your dealer or service center to fix it. Do not repair the screen by yourself!

Conventions used in this guide



WARNING: Information to prevent injury to yourself when trying to complete a task.



CAUTION: Information to prevent damage to the components when trying to complete a task.



IMPORTANT: Information that you **MUST** follow to complete a task.



NOTE: Tips and additional information to aid in completing a task.

Where to find more information

Refer to the following sources for additional information and for product and software updates.

1. ASUS websites

The ASUS websites worldwide provide updated information on ASUS hardware and software products. Refer to **<http://www.asus.com>**

2. Optional documentation

Your product package may include optional documentation that may have been added by your dealer. These documents are not part of the standard package.

1.1 Welcome

Thank you for purchasing the ASUS® LCD monitor!

The latest widescreen LCD monitor from ASUS provides a crisper, broader, and brighter display, plus a host of features that enhance your viewing experience.

With these features, you can enjoy the convenience and delightful visual experience that the monitor brings you!

1.2 Package contents

Check your package for the following items:

- ✓ LCD Monitor
- ✓ Monitor Base
- ✓ Quick Start Guide
- ✓ Warranty Card
- ✓ 1x Power Cord
- ✓ 1x HDMI Cable (option)
- ✓ 1x DP Cable (option)
- ✓ 1x Mini-DP → DP Cable(option)
- ✓ 1x Power Adapter
- ✓ 1x USB 3.0 Cable
- ✓ 1x CD
- ✓ 1x LED projection cover and changeable films



-
- If any of the above items is damaged or missing, contact your retailer immediately.
-

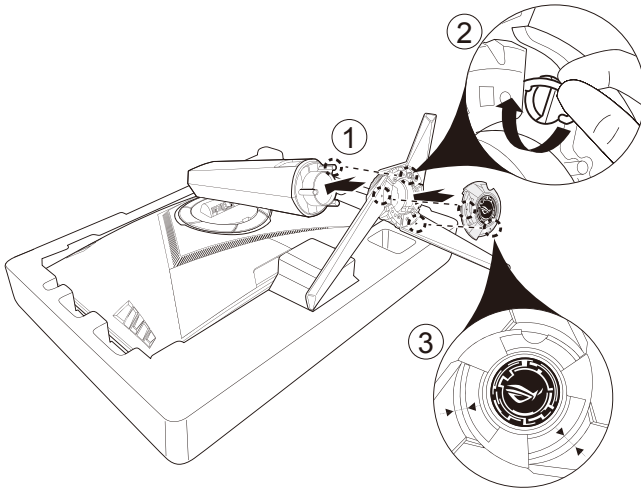
1.3 Assembling the monitor

To assemble the monitor:

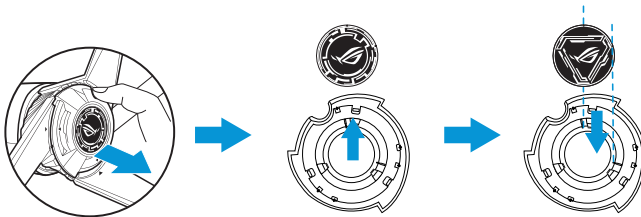


- While assembling the monitor arm/base, we recommend that you keep the monitor inside its EPS (Expanded Polystyrene) packaging.

1. Align the screw hole on the arm with the bundled screw on the base. Then insert the base into the arm.
2. Fix the base to the arm by fastening the bundled screw.
3. Align the triangle marks on the monitor base and the LED projection cover. Then attach the LED projection cover to the monitor base.
4. Remove the monitor from its EPS packaging. Adjust the monitor to the angle that is most comfortable for you.



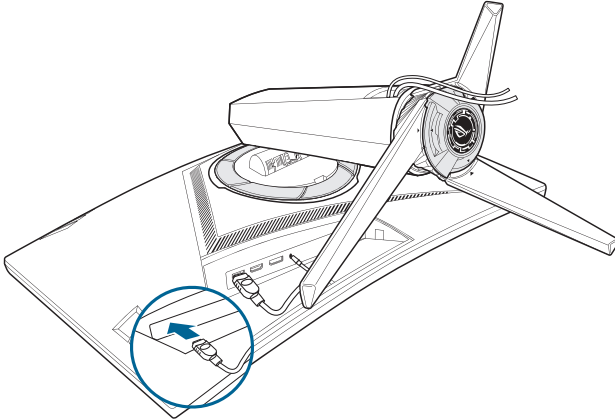
5. To change the film on the LED projection cover, follow the illustration below.



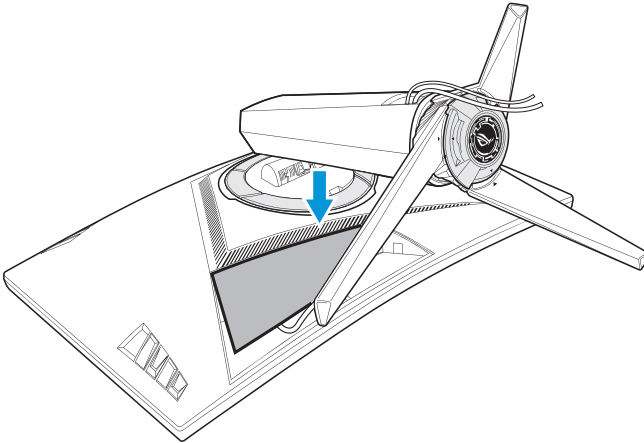
1.4 Cable management

You can organize the cables with the help of the input/output port cover.

- Arranging the cables



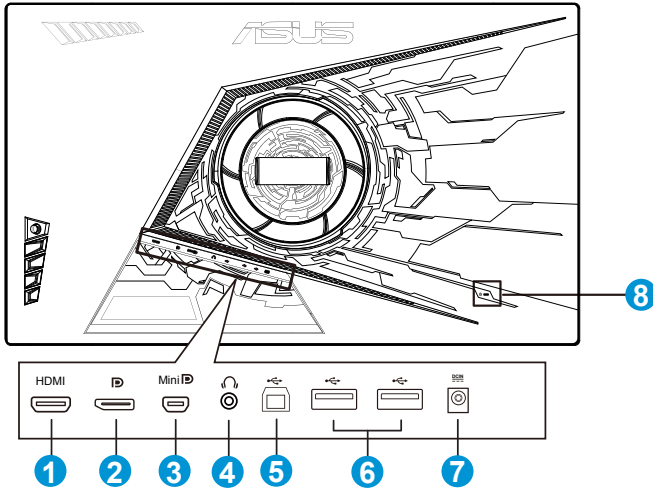
- Using the input/output port cover : the cover can be attached or detached.



1.5 Connect cables

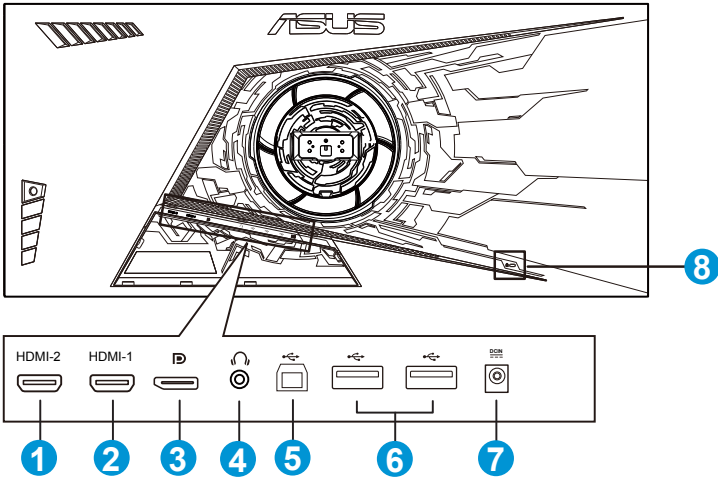
1.5.1 Rear of the LCD monitor

XG32VQ



1. HDMI2.0 Port
2. DisplayPort
3. Mini DisplayPort
4. Earphone Jack
5. USB Upstream Port
6. USB Downstream Port
7. DC-IN Port
8. Kensington Lock

XG35VQ

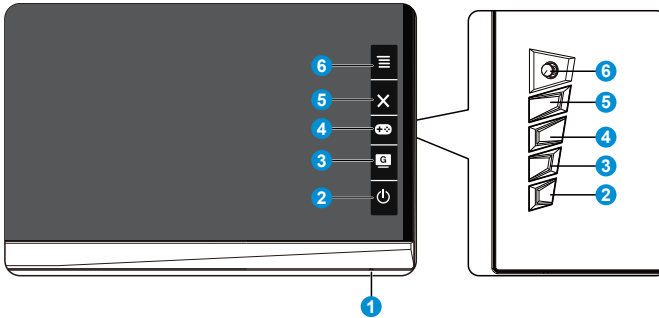


1. HDMI1.4 Port
2. HDMI2.0 Port.
3. DisplayPort
4. Earphone Jack
5. USB Upstream Port
6. USB Downstream Port
7. DC-IN Port
8. Kensington Lock

1.6 Monitor introduction

1.6.1 Using the Controls button

Use the control button on the back of the monitor to adjust the monitor settings.



1. Power Indicator:

- The color definition of the power indicator is as the below table.

Status	Description
White	ON
Amber	Standby mode
OFF	OFF

2. Power Button:

- Press this button to turn the monitor on/off.

3. GameVisual:




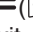
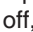

- Press this hotkey to switch from eight video preset modes (Scenery Mode, Racing Mode, Cinema Mode, RTS/RPG Mode, FPS Mode, sRGB Mode, MOBA Mode and User Mode) with GameVisual™ Video Intelligence Technology.

4. GamePlus Button:

- **GamePlus:** The GamePlus Function provides a toolkit and creates a better gaming environment for users when playing different types of games. Particularly, Crosshair function is specially designed for new gamers or beginners interested in First Person Shooter (FPS) games.

To active GamePlus:

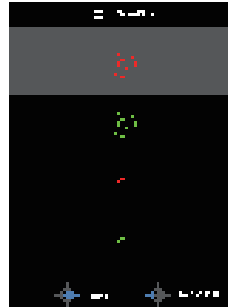
- Press **GamePlus** Button to enter the GamePlus main menu.

- Activate Crosshair, Timer or FPS Counter or Display Alignment function
- Move the  () button up/down to select and press  () to confirm the function needed. Press  to go off, and exit.
- Crosshair/Timer/FPS Counter is movable by pressing  5-way key.

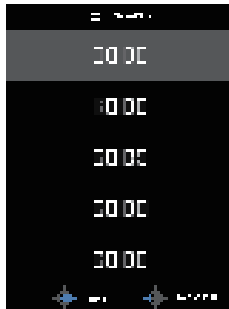
GamePlus main menu



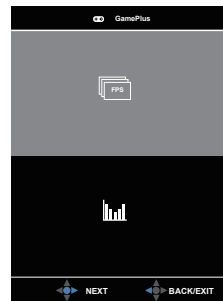
GamePlus-Crosshair






GamePlus-Timer



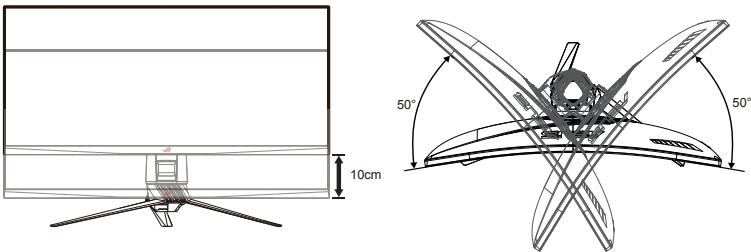
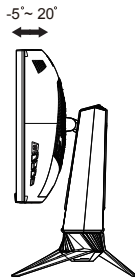
GamePlus-FPS Counter



5.  Close Button
 - Exit the OSD menu.
6.  () 5-way) Button:
 - Turn on the OSD menu. Enacts the selected OSD menu item.
 - Increases/Decreases values or moves your selection up/down/left/right.

2.1 Adjusting the monitor

- For optimal viewing, we recommend that you look at the full face of the monitor, then adjust the monitor to the angle that is most comfortable for you.
- Hold the stand to prevent the monitor from falling when you change its angle.
- You can adjust the monitor's angle from $+20^{\circ}$ to -5° and it allows 50° swivel adjustment from either left or right. You can also adjust the monitor's height within $\pm 10\text{cm}$.



It is normal that the monitor slightly shakes while you adjust the viewing angle.

2.2 Detaching the arm/stand (for VESA wall mount)

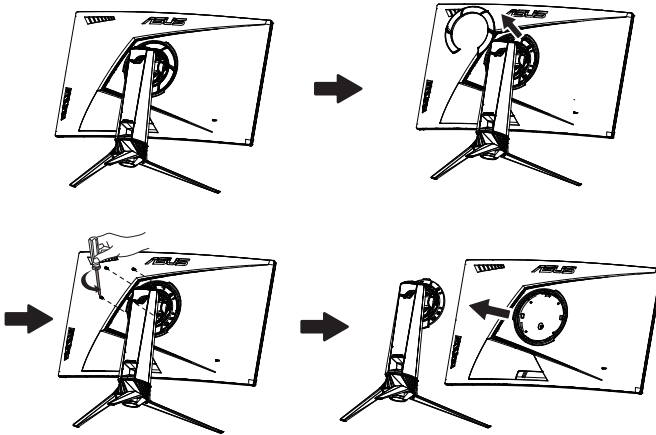


- Avoid damaging the monitor surface. While detaching the monitor stand, always keep the monitor inside its EPS packaging.

The detachable stand of this monitor is specially designed for VESA wall mount.

To detach the arm/stand

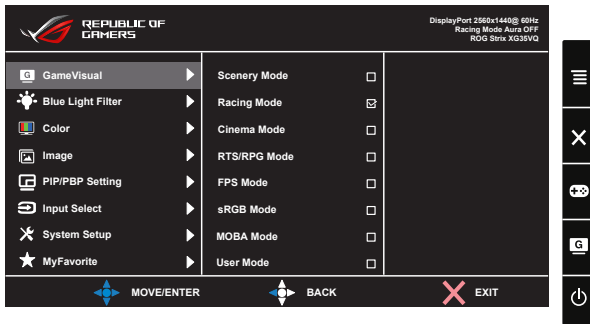
1. Disconnect power and signal cables. Carefully put the monitor facedown on its EPS packaging.
2. Remove the covers on where the monitor and the arm meet.
3. Remove the four (4) screws securing the arm to the rear of the monitor.
4. Detach the stand (arm and base) from the monitor.



- The VESA wall mount kit (100 x 100 mm) is purchased separately.
- Use only the UL Listed Wall Mount Bracket with minimum weight/load 28.8 kg (Screw size: M4 x 10 mm).

3.1 OSD (On-Screen Display) menu

3.1.1 How to reconfigure

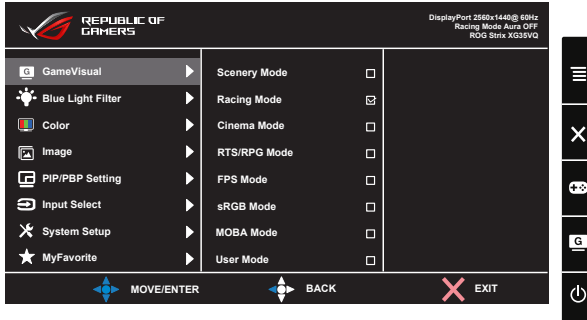


1. Press the Central of 5-way button to display the OSD menu.
2. Press the Up and Down keys to switch the options in the menu. When you move from one icon to another, the option name is highlighted.
3. To select a highlighted item from the menu, press the Right key or the Central button.
4. Press the Up and Down keys to select the desired parameters.
5. Press the Right key or the Central button to enter the slide bar, and then use the Up or Down keys (depending on the indicators in the menu) to make changes.
6. Press the Left key to return to the previous menu.

3.1.2 OSD Function Introduction

1. GameVisual

This function contains eight sub-functions that you can select for your preference. Each mode has the Reset selection, allowing you to maintain your setting or return to the preset mode.



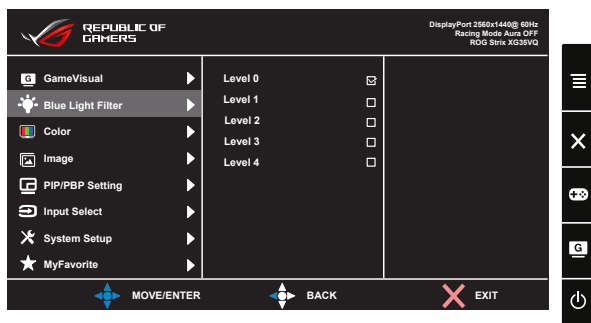
- **Scenery Mode:** This is the best choice for scenery photo displaying with GameVisual™ Video Intelligence Technology.
- **Racing Mode:** This is the best choice for racing game playing with GameVisual™ Video Intelligence Technology.
- **Cinema Mode:** This is the best choice for movie watching with GameVisual™ Video Intelligence Technology.
- **RTS/RPG Mode:** This is the best choice for Real-Time Strategy(RTS)/Role-Playing Game(RPG) playing with GameVisual™ Video Intelligence Technology.
- **FPS Mode:** This is the best choice for First Person Shooter game playing with GameVisual™ Video Intelligence Technology.
- **sRGB Mode:** This is the best choice for viewing photos and graphics from PCs.
- **MOBA Mode :** This is the best choice for Multiplayer Online Battle Arena (MOBA) games playing with GameVisual™ Video intelligence Technology.
- **User Mode:** More items are adjustable in the Color menu.



- In the Racing Mode, the Saturation, Sharpness, and ASCR functions are not user-configurable.
- In the sRGB, the Saturation, Color Temp., Sharpness, Brightness, Contrast and ASCR functions are not user-configurable.
- In the MOBA Mode, the Saturation, Sharpness and ASCR functions are not user-configurable.

2. Blue Light Filter

Adjust the energy level of blue light emitted from LED backlight.



- **Level 0:** No change.
- **Level 1~4:** The higher the level, the more blue light will be reduced.



- When Blue Light Filter is activated, the default settings of Standard Mode will be automatically imported.
- Between Level 1 to Level 3, the Brightness function is user-configurable.
- Level 4 is optimized setting. It is compliance with TUV Low Blue Light Certification. The Brightness function is not user-configurable.

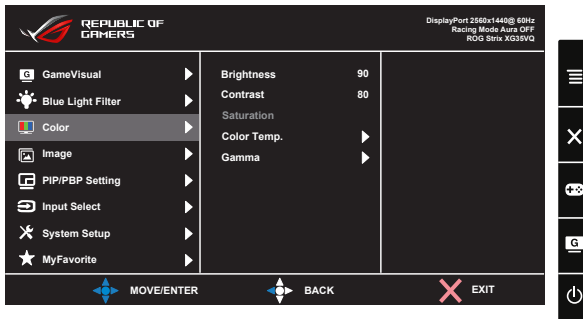


Please refer to the following to alleviate eye strains:

- Users should take some time away from the display if working for long hours. It is advised to take short breaks (at least 5 mins) after around 1 hour of continuous working at the computer. Taking short and frequent breaks is more effective than a single longer break.
- To minimize eye strain and dryness in your eyes, users should rest the eye periodically by focusing on objects that are far away.
- Eye exercises can help to reduce eye strain. Repeat these exercises often. If eye strain continues please consult a physician. Eye exercises: (1) Repeating look up and down (2) Slowly roll your eyes (3) Move your eyes diagonal.
- High energy blue light may lead to eye strain and AMD (Age-Related Macular Degeneration). Blue light filter to reduce 70% (max.) harmful blue light to avoiding CVS (Computer Vision Syndrome).

3. Color

Select the image color you like from this function.



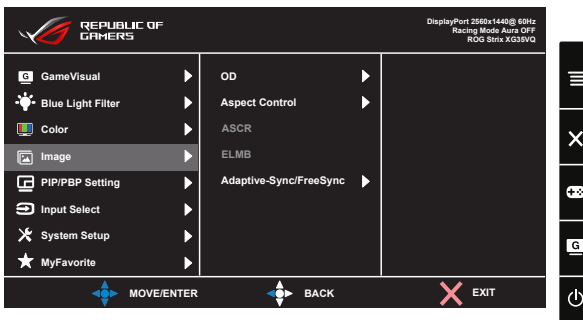
- **Brightness:** The adjusting range is from 0 to 100.
- **Contrast:** The adjusting range is from 0 to 100.
- **Saturation:** The adjusting range is from 0 to 100.
- **Color Temp.:** Contains three preset color modes (**Cool**, **Normal**, **Warm**) and **User Mode**.
- **Gamma:** Contains three gamma modes including 1.8, 2.2, 2.5.



- In the User Mode, colors of R (Red), G (Green), and B (Blue) are user-configurable; the adjusting range is from 0 ~ 100.

4. Image

You can adjust OD, Aspect Control, ASCR, ELMB (**Only for XG35VQ**), Adaptive-Sync/FreeSync from this main function.



- **OD:** Speeds up the response time by Over Drive technology. Including Level 0~Level 5.
- **Aspect Control:** Adjusts the aspect ratio to “Full” and “4:3”.

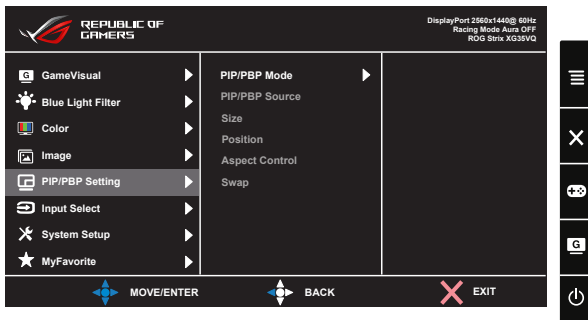
- **ASCR:** Select **ON** or **OFF** to enable or disable dynamic contrast ratio function, ASCR is Disabled when ELMB is on.
- **ELMB:** Check to decrease motion blur and minimize ghosting part when on-screen objects are fast moving. ELMB will be disabled if input source HDMI is selected.
- **Adaptive-Sync/FreeSync:** It can allow a Adaptive-Sync/FreeSync supported graphics source to dynamically adjust display refresh rate based on typical content frame rates for power efficient, virtually stutter free and low-latency display update. It is selectable in DisplayPort.



- Choose 4:3 to display the picture according to the original aspect ratio of the input source.

5. PIP/PBP Setting (Only for XG35VQ)

The PIP/PBP Setting allows you to open up another sub-window connected from another video source besides the main-window from your original video source.



By activating this function, this monitor displays two pictures from two different video sources.

- **PIP/PBP Mode:** Selects PIP or PBP function, or turn it off.
- **PIP/PBP Source:** Selects the video input source among, “HDMI-1(V2.0)”, “HDMI-2” or “DisplayPort”.
- **Size:** Adjust the PIP size to “Small”, “Middle”, or “Large”.
- **Position:** Adjusts the position of PIP sub-window to “Right-Top”, “Left-Top”, “Right-Bottom” or “Left-Bottom”.
- **Aspect Control:** Adjusts the PIP aspect ratio and automatically adjust the PIP window size.
- **Swap:** Swaps the sources of the main- and sub-windows.

Sub-window	Main-window		
	HDMI-1 (V2.0)	HDMI-2	DisplayPort
HDMI-1 (V2.0)	Yes	Yes	Yes
HDMI-2	Yes	Yes	Yes
DisplayPort	Yes	Yes	Yes

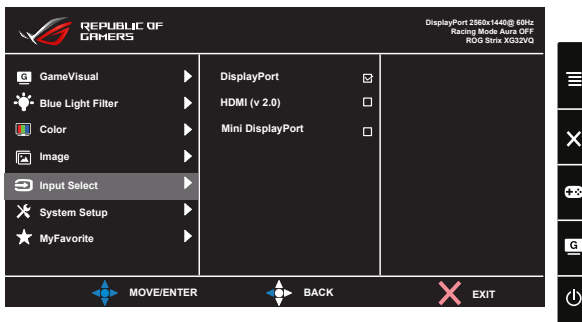
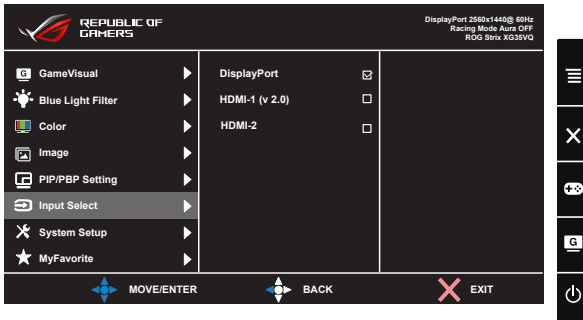


- PIP/PBP will be disabled if main or sub-source is Adaptive-Sync/FreeSync enabled. Change those sources to non Adaptive-Sync/FreeSync to enable PIP/PBP function.

6. Input Select

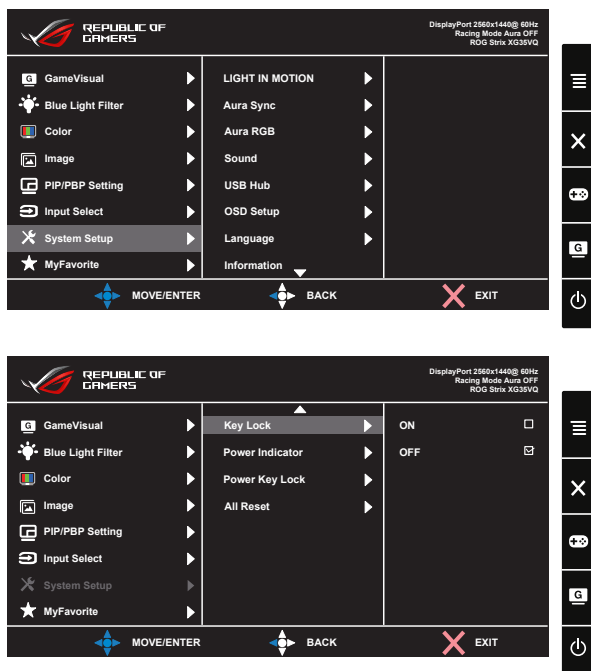
Select the input source:

- HDMI, DisplayPort, and Mini DisplayPort. (for XG32VQ)
- DisplayPort, HDMI-1 (v2.0), and HDMI-2. (for XG35VQ)



7. System Setup

Adjusts the system configuration.



- **LIGHT IN MOTION:** Set the red light intensity level on the base from Level 1 to Level 3. To turn off the red light, set Level 0.
- **Aura Sync:** Allows you to turn on or off the Aura Sync function that synchronizes the Aura RGB light effect among all supported devices.
- **Aura RGB:** In this function you can select an Aura RGB light effect for the monitor and change settings for the light effect. Select “OFF” if you want to turn the Aura RGB light effect off.

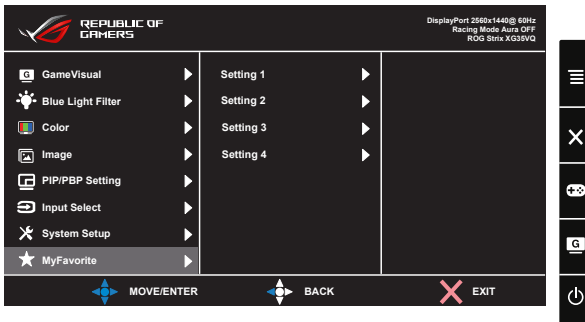


- If the Aura Sync function is turned ON, the Aura RGB function will become unavailable.
 - See page 3-9 for information on how to customize Aura light effects from your computer.
-
- **Sound:** Selects “Volume” to adjust the output volume level. Selects “Mute” to mute the output volume.
 - **USB Hub:** Turn On/Off USB Hub function during the standby mode.

- **OSD Setup:** Adjusts the **OSD Timeout, DDC/CI,** and **Transparency** of the OSD screen.
- **Language:** Select OSD language. The selections are: **English, French, German, Spanish, Italian, Dutch, Russian, Poland, Czech, Croacia, Hungary, Romania, Portugal, Turkey, Simplified Chinese, Traditional Chinese, Japanese, Korean, Persian, Thai,** and **Indonesian.**
- **Information:** Displays the monitor information.
- **Key Lock:** Disable all key functions. Pressing the down button for more than five seconds to disable key lock function.
- **Power Indicator:** Turn the power LED indicator on/off.
- **Power Key Lock:** To disable / enable power key
- **All Reset:** Selects “**Yes**” to revert all settings to the factory default mode.

8. MyFavorite


Load/Save all settings on the monitor.



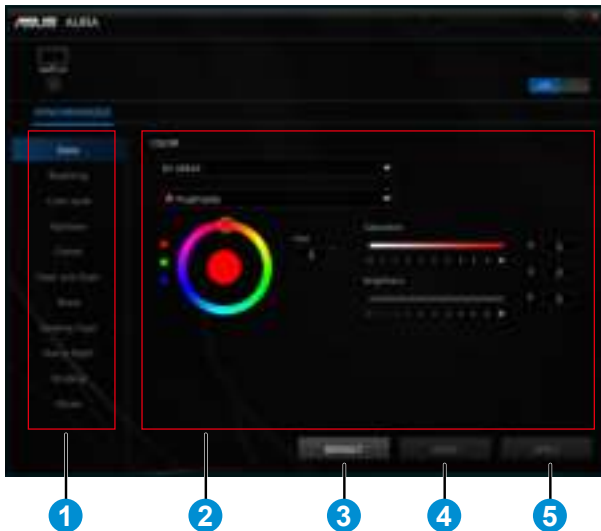
3.2 Aura

AURA is a software program that controls the colorful LEDs on supported devices, such as monitors, motherboards, graphic cards, desktop PCs, etc. Aura allows you to adjust the color of the RGB LEDs on these devices and select different light effects. You can also correct or adjust the color of the LEDs by calibrating them.

To activate Aura:

1. Turn ON the **Aura Sync** function in the OSD menu.
2. Connect the USB 3.0 upstream port of the monitor to the USB port of your computer.
3. Install AURA and then restart the computer.
4. Double-click the AURA program icon  on your desktop.

Refer to the figure below for information about the AURA program functions.



- ① Select the desired AURA lighting effect when the system has been turned on.
- ② Adjust AURA lighting options.
- ③ Click to enable the default settings.

④ Click to undo the changes.

⑤ Click to apply the changes.




If the USB upstream connection between the monitor and computer is disconnected, to resume the Aura function, you need to re-connect the USB 3.0 upstream port of the monitor to the computer and then restart the computer.

3.3 Specifications

Model	XG32VQ
Panel Size	31.5"W (80.1 cm)
Max. Resolution	2560x1440
Brightness (Typ.)	300cd/m ²
Intrinsic Contrast Ratio (Typ.)	3000:1
Viewing Angle (CR>10)	178°(V) /178°(H)
Display Colors	16.7 M
Response Time	4ms (G To G)
Sound from HDMI	Yes
HDMI input	HDMI2.0x1
DisplayPort input	Yes
Mini DP1.2	Yes
USB3.0 Port	Upstream x1, Downstream x2 (USB port without power charger when upstream no link)
Earphone	Yes
Power ON Consumption	< 38 W* (Measuring a screen brightness of 200 nits without audio/ USB/ Card reader connection)
Chassis Colors	Black
Power saving mode	< 0.5W
Power off mode	< 0.5W
Tilt	-5° ~ +20°
Phys. Dimension with stand (WxHxD)	713.4 x 590.0 x 296.1 mm
Phys. Dimension without stand (WxHxD)	713.4 x 425.7 x 111.2 mm
Box Dimension (WxHxD)	829 x 614 x 298 mm
Net Weight (Esti.)	9.6 kg
Gross Weight (Esti.)	13.9 kg
Voltage Rating	AC 100~240V(Built-in)

Model	XG35VQ
Panel Size	35"W (88.9 cm)
Max. Resolution	3440x1440
Brightness (Typ.)	300cd/m ²
Intrinsic Contrast Ratio (Typ.)	2500:1
Viewing Angle (CR>10)	178°(V) /178°(H)
Display Colors	16.7 M
Response Time	4ms (G To G)
Sound from HDMI	Yes
HDMI input	HDMI1.4x1, HDMI2.0x1
DisplayPort input	Yes
USB3.0 Port	Upstream x1, Downstream x2 (USB port without power charger when upstream no link)
Earphone	Yes
Power ON Consumption	< 49 W* (Measuring a screen brightness of 200 nits without audio/ USB/ Card reader connection)
Chassis Colors	Black
Power saving mode	< 0.5W
Power off mode	< 0.5W
Tilt	-5° ~ +20°
Phys. Dimension with stand (WxHxD)	834.7 x 564.7 x 310.2 mm
Phys. Dimension without stand (WxHxD)	834.7 x 381.5 x 122.4 mm
Box Dimension (WxHxD)	971 x 601 x 297 mm
Net Weight (Esti.)	12.2 kg
Gross Weight (Esti.)	17.2 kg
Voltage Rating	AC 100~240V(Built-in)

3.3 Troubleshooting (FAQ)

Problem	Possible Solution
Power LED is not ON	<ul style="list-style-type: none"> • Press the  button to check if the monitor is in the ON mode. • Check if the power cord is properly connected to the monitor and the power outlet. • Check Power Indicator function in main menu OSD. Select "ON" to turn on power LED.
The power LED lights amber and there is no screen image	<ul style="list-style-type: none"> • Check if the monitor and the computer are in the ON mode. • Make sure the signal cable is properly connected the monitor and the computer. • Inspect the signal cable and make sure none of the pins are bent. • Connect the computer with another available monitor to check if the computer is properly working.
Screen image is too light or dark	<ul style="list-style-type: none"> • Adjust the Contrast and Brightness settings via OSD.
Screen image bounces or a wave pattern is present in the image	<ul style="list-style-type: none"> • Make sure the signal cable is properly connected to the monitor and the computer. • Move electrical devices that may cause electrical interference.
Screen image has color defects (white does not look white)	<ul style="list-style-type: none"> • Inspect the signal cable and make sure that none of the pins are bent. • Perform Reset via OSD. • Adjust the R/G/B color settings or select the Color Temperature via OSD.
No sound or sound is low	<ul style="list-style-type: none"> • Adjust the volume settings of both your monitor and computer. • Make sure the computer sound card driver is properly installed and activated. • Check the audio source.
The following function is disabled automatically. <ul style="list-style-type: none"> • Adaptive-Sync/FreeSync (for DisplayPort). • ELMB (for XG35VQ) • PIP/PBP Setting(for XG35VQ) 	<ul style="list-style-type: none"> • Those functions can't be enabled at the same time. Enable one will disable others automatically. Choose one function which you wanted.

3.4 Supported Timing List

PC Supported Primary Timing

XG32VQ

Timing List	HDMI2.0	DisplayPort 1.2	Mini DP
640 x 480 @ 60Hz	V	V	V
640 x 480 @ 67Hz	V	V	V
640 x 480 @ 72Hz	V	V	V
640 x 480 @ 75Hz	V	V	V
720 x 400 @ 70Hz	V	V	V
720 x 480 @ 60Hz	V	V	V
720 x 576 @ 50Hz	V	V	V
800 x 600 @ 56Hz	V	V	V
800 x 600 @ 60Hz	V	V	V
800 x 600 @ 72Hz	V	V	V
800 x 600 @ 75Hz	V	V	V
1024 x 768 @ 60Hz	V	V	V
1024 x 768 @ 70Hz	V	V	V
1024 x 768 @ 75Hz	V	V	V
1152 x 864 @ 75Hz	V	V	V
1280 x 720 @ 50Hz	V	V	V
1280 x 720 @ 60Hz	V	V	V
1280 x 960 @ 60Hz	V	V	V
1280 x 1024 @ 60Hz	V	V	V
1280 x 1024 @ 75Hz	V	V	V
1440 x 480 @ 60Hz	V	V	V
1440 x 576 @ 50Hz	V	V	V
1440 x 900 @ 60Hz	V	V	V
1680 x 1050 @ 60Hz	V	V	V
1920 x 1080 @ 50Hz	V	V	V
1920 x 1080 @ 60Hz	V	V	V
2560 x 1440 @ 60Hz	V	V	V
2560 x 1440 @ 85Hz	V	V	V
2560 x 1440 @ 100Hz	V	V	V
2560 x 1440 @ 120Hz	V	V	V
2560 x 1440 @ 144Hz	V (Default timing)	V (Default timing)	V (Default timing)

XG35VQ

Timing List	HDMI1.4	HDMI2.0	DisplayPort 1.2
640 x 480 @ 60Hz	V	V	V
640 x 480 @ 67Hz	V	V	V
640 x 480 @ 72Hz	V	V	V
640 x 480 @ 75Hz	V	V	V
720 x 400 @ 70Hz	V	V	V
720 x 480 @ 60Hz	V	V	X
720 x 576 @ 50Hz	V	V	V
800 x 600 @ 56Hz	V	V	V
800 x 600 @ 60Hz	V	V	V
800 x 600 @ 72Hz	V	V	V
800 x 600 @ 75Hz	V	V	V
1024 x 768 @ 60Hz	V	V	V
1024 x 768 @ 70Hz	V	V	V
1024 x 768 @ 75Hz	V	V	V
1152 x 864 @ 75Hz	V	V	V
1280 x 720 @ 60Hz	V	V	V
1280 x 960 @ 60Hz	V	V	V
1280 x 1024 @ 60Hz	V	V	V
1280 x 1024 @ 75Hz	V	V	V
1440 x 900 @ 60Hz	V	V	V
1680 x 1050 @ 60Hz	V	V	V
1920 x 1080 @ 60Hz	V	V	V
3440 x 1440 @ 30Hz	V	V	X
3440 x 1440 @ 50Hz	V	X	X
3440 x 1440 @ 60Hz	V (Default timing)	V	V
3440 x 1440 @ 75Hz	X	X	V
3440 x 1440 @ 85Hz	X	V	V
3440 x 1440 @ 100Hz	X	V (Default timing)	V (Default timing)

Video timing

XG32VQ

Timing List	HDMI2.0	DisplayPort 1.2	Mini DP
640x480 @ 59.94Hz	V	V	V
640x480 @ 60Hz	V	V	V
720x480P @ 59.94Hz	V	V	V
720x480P @ 60Hz	V	V	V
720x576P @ 50Hz	V	V	V
1280x720P @ 50Hz	V	V	V
1280x720P @ 59.94Hz	V	V	V
1280x720P @ 60Hz	V	V	V
1440x480P @ 59.94Hz	V	V	V
1440x480P @ 60Hz	V	V	V
1440x576P @ 50Hz	V	V	V
1920x1080P @ 50Hz	V	V	V
1920x1080P @ 59.94Hz	V	V	V
1920x1080P @ 60Hz	V	V	V

XG35VQ

Timing List	HDMI1.4	HDMI2.0	DisplayPort 1.2
640x480 @ 59.94Hz	V	V	V
640x480 @ 60Hz	V	V	V
720x480P @ 59.94Hz	V	V	V
720x480P @ 60Hz	V	V	V
720x576P @ 50Hz	V	V	V
1280x720P @ 50Hz	V	V	V
1280x720P @ 59.94Hz	V	V	V
1280x720P @ 60Hz	V	V	V
1440x480P @ 59.94Hz	V	V	V
1440x480P @ 60Hz	V	V	V
1440x576P @ 50Hz	V	V	V
1920x1080P @ 50Hz	V	V	V
1920x1080P @ 59.94Hz	V	V	V
1920x1080P @ 60Hz	V	V	V

* The modes not listed in the above tables may not be supported. For optimal resolution, we recommend that you choose a mode listed in the above tables.



REPUBLIC OF
GAMERS