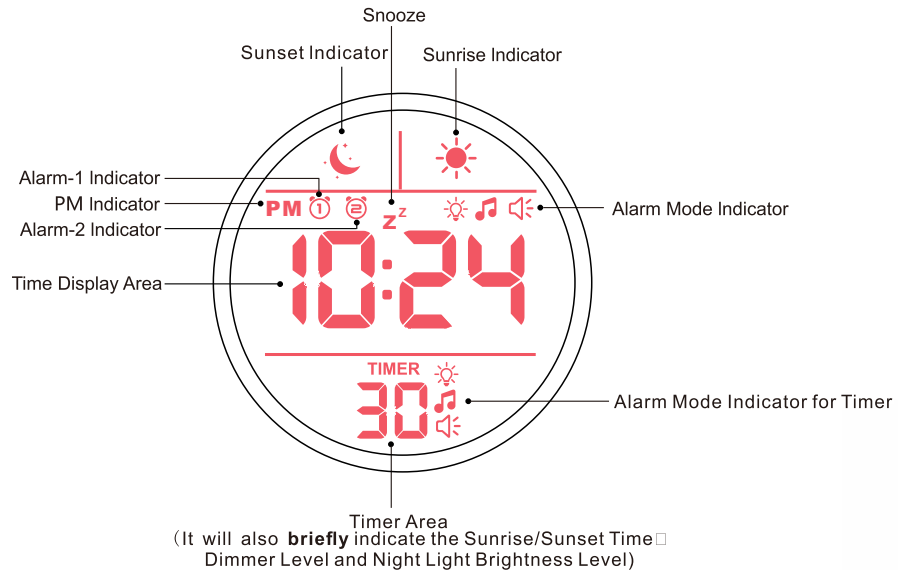




USER MANUAL

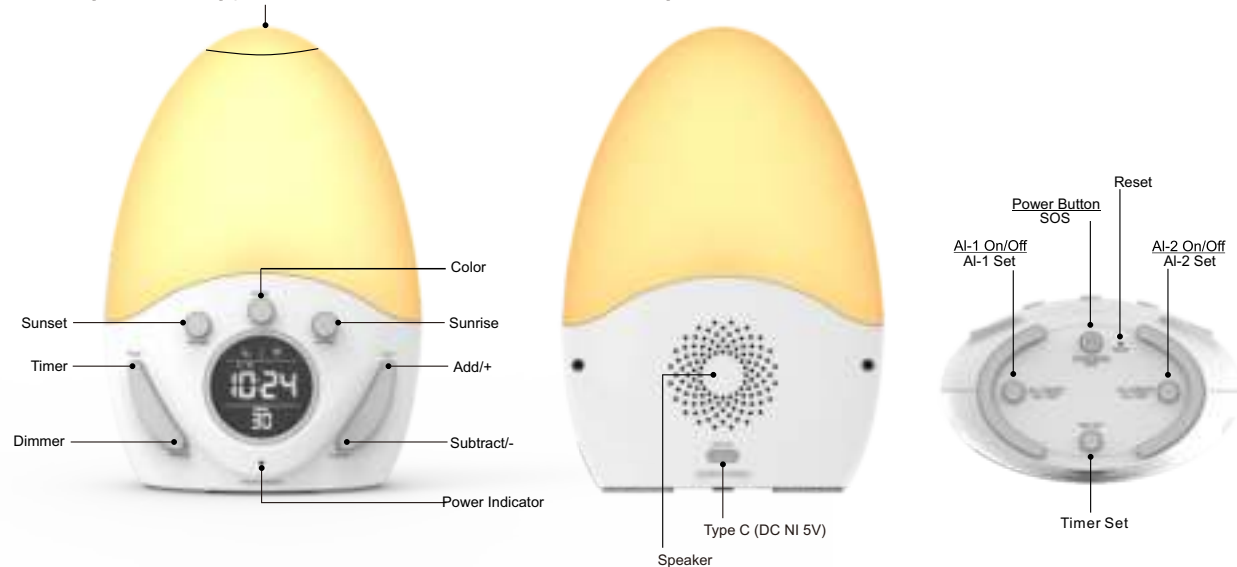
Wake-up Light Alarm Clock

Display Descriptions



- ◇ Short press the **TOP** to turn on the light.
- ◇ Short press the **TOP** again to adjust the brightness of the light in cycle.
- ◇ When light is ON, long press the **TOP** for 2 seconds to turn OFF the light.

◇ Attention: When battery power is less than 20%, the night light function will be deactivated.



Time Setting

1. In time-mode, press and hold the **TIME SET** button for 2 seconds to enter time setting mode, the **hour** digits flash.

Press **+/-** button to set the current hour(hold to advance rapidly).

2. Press **TIME SET** button again, the **minute** digits flash.

Press **+/-** button to set minute.

3. Press **TIME SET** button again, the **12/24Hr** digits flash.

Press **+/-** button to set 12/24Hr time format.

4. Press **TIME SET** button again, the **year** digits flash.

Press **+/-** button to set year.

5. Press **TIME SET** button again, the **month** digits flash.

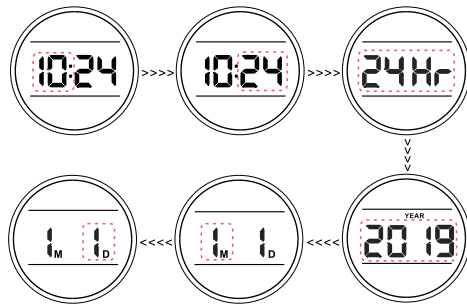
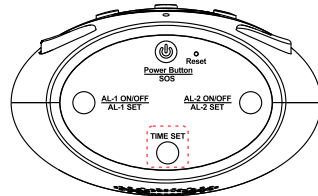
Press **+/-** button to set month.

6. Press **TIME SET** button again, the **date** digits flash.

Press **+/-** button to set day.

7. Press **TIME SET** button again, exit time setting mode.

※ The order of Time Setting: Hour—Minute—12/24 Hour—Year—Month—Date.



Alarm Setting

1. In time-mode, press and hold **AL-1 SET** button for 2 seconds to enter alarm-setting mode, the **hour** digits flash. Press **+ / -** button to set hour (hold to advance rapidly).

2. Press **AL-1 SET** button again, the **minute** digits flash. Press **+ / -** button to set minute.

3. Press **AL-1 SET** button again, the **alarm day** digits flash. Press **+ / -** button to set alarm day:

Digits	Meaning
1-1	Single day only
1-5	Weekdays only
6-7	Weekends only
1-7	Daily

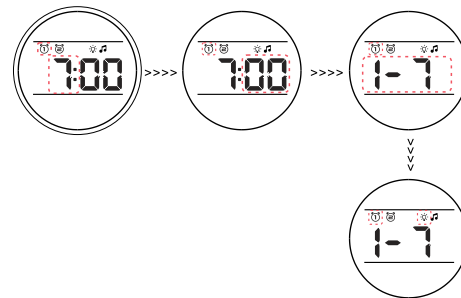
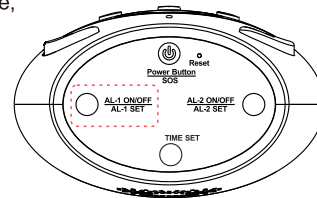
4. Press **AL-1 SET** button again, the **corresponding icons** flash. Press **+/-** button to switch alarm mode:

Icons	Meaning
☀	Changing lights
🎵	Canon chord
🔊	Buzzer sound
☀ 🎵	Canon chord & Changing lights

5. Press **AL-1 SET** button again, save and exit alarm-setting mode.

※ Setting **AL-2** is the same as **AL-1**.

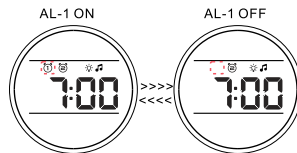
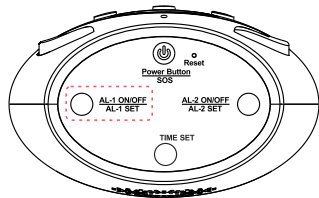
※ The order of Alarm Setting: Hour—Minute—Alarm Day—Alarm Mode



Switching Alarm ON/OFF

1. In time-mode, press **AL-1 ON/OFF** button to switch on the alarm, **AL-1** icon appears on display correspondingly.
2. Then press **AL-1 ON/OFF** button again, you can switch off the alarm and the **AL-1** icon will disappear on display correspondingly.

※ Switching AL-2 ON/OFF is the same as AL-1.

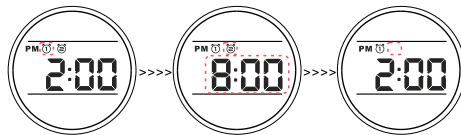


Attention: When both **AL-1** and **AL-2** are ON, the clock will display the first coming alarm time and the corresponding icon flashes.

For example:

※ If current time is 2:00pm, **AL-1** time is 7:00pm and **AL-2** time is 8:00pm; the clock will display **AL-1**'s time, the **AL-1** icon flashes while **AL-2** icon is always on.

※ Now press **AL-2** button, the clock will display **AL-2**'s time for 3 seconds, press **AL-2** button again within the 3 seconds, **AL-2** will be switched OFF.



Setting Timer

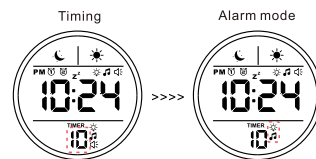
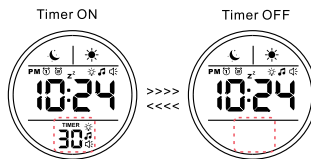
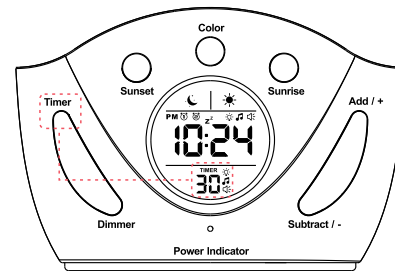
1. In time-mode, short press **Timer** button to switch ON/OFF the timer function.

2. When timer is ON, long press and hold **Timer** button for 2 seconds to enter timer-setting mode, the **timing** digits flash. Press **+ / -** button to set the timing:
Timing Range: 5/10/15/20/25/30/45/60/90 minutes

3. Press **Timer** button again, the **corresponding icons** flash. Press **+/-** button to switch alarm mode:

Icons	Meaning
	Changing lights
	Canon chord
	Buzzer sound
	Canon chord & Changing lights

4. Press **Timer** button again, save and exit timer-setting mode.

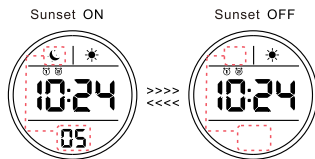
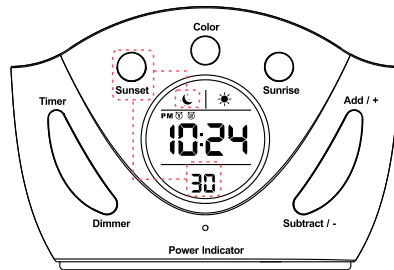


Sunset Simulation

1. Under general condition, short press **Sunset** button to switch ON/OFF the sunset-simulation, the sunset indicator and night light will be ON/OFF correspondingly.
2. When sunset-simulation is ON, long press and hold **Sunset** button for 2 seconds to enter sunset-simulation-setting mode, the **timing** digits flash. Press **+ / -** button to set the timing:
※Sunset Timing Range: 5/10/15/20/25/30/45/60 minutes.
3. Press **Sunset** button again, save and exit sunset-simulation-setting mode.

Attention :

- ※The current brightness of night light is the initial brightness of the sunset-simulation.
- ※When sunset-simulation is working, if you had adjusted the brightness, the sunset-timing would be restarted.
- ※When sunset-simulation is working, the night light brightness will gradually dim to black out completely, just like sunset.



Sunrise Simulation

1. Under general condition, short press **Sunrise** button to switch ON/OFF the sunrise-simulation, the sunrise-indicator will be ON/OFF correspondingly.
2. When sunrise-simulation is ON, long press and hold **Sunrise** button for 2 seconds to enter sunrise-simulation-setting mode, the **timing** digits flash. Press **+/-** button to set the timing:
※Sunrise Timing Range: 5/10/15/20/25/30/45/60 minutes.
3. Press **Sunrise** button again, the **Brightness Level** digits flash and light will be ON. Press **+/-** button to set the final brightness level of the sunrise-simulation.

How does Sunrise Simulation work?

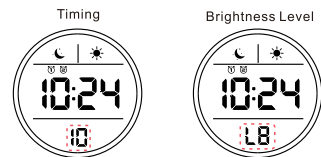
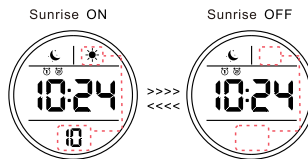
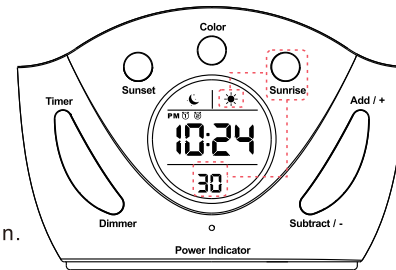
- ※If sunrise-simulation is ON, the light would get brighter before alarm goes off.

For example:

- ※If sunrise-simulation is ON, sunrise timing is 10 minutes, Alarm-1 is set to go off at 7:00am. Then the light would turn on at 6:50am and get brighter within 10 minutes until it reaches the final brightness.

Attention:

- ※The sunrise-simulation only works when Alarm is ON. (No matter AL-1 or AL-2)



Dimmable Display

Under general condition, short press **Dimmer** button to adjust the backlight of the display.

Color Changing Night Light

When night light is ON, short press **Color** button to change the color of night light.
The order of the light changing:



Turning ON the Light (Touch Control)

1. Under general condition, short press the **TOP** of the clock to turn on the night light.
2. Short press the **TOP** again, you can adjust the brightness of the night light in cycle.

Tips: When night light is ON, you can also short press the +/- button to adjust the

Turning OFF the Light (Touch Control)

When light is ON, long press the **TOP** for 2 seconds to turn OFF the light.

Power Indicator

Under Normal Condition

Battery Power	Power Indicator
0-20%	Red(Flashing)
20%-30%	Red(Always ON)
30%-100%	Indicator OFF

When Charging

Battery Power	Power Indicator
0-30%	Red(Always ON)
30%-70%	Yellow(Always ON)
70%-100%	Green(Always ON)

Attention:

When battery power is less than 20%, the night light function will be deactivated.

Activating Snooze Function When Alarm Goes off

When **AL-1/AL-2** is sounding, short press the **TOP** of this clock, the alarm will suspend and go off again after 9 minutes.

Stopping the Alarm When It Goes off

When **AL-1/AL-2** is sounding, short press **any physical buttons** (except the TOP) to stop and reset the alarm to go off the next day.

Power ON/OFF

Under general condition, long press and hold **Power** button for 2 seconds to turn ON/OFF the entire product, including both alarm clock and night light function.

Activating/Deactivating SOS

1. When the power is ON, triple click the **Power** button to activate the SOS, the night light will be flashing.
2. When SOS function is ON, triple click the **Power** button again to deactivate the SOS, then the night light will stop flashing.

Reset the Product

When there occurs product failure, use a tooth-pick to poke the **Reset** hole to restore the factory default setting.

Default Settings

Time Format: 24 Hour

Time: 12:00

Date: 2019/1/1

Alarm Duration: 5 mins

Snooze Duration: 9 mins

Power Supply

USB Type-C IN: DC 5V/1A

Battery Type: Li-ion Battery (Rechargeable)

Battery Capacity: 1800mAh