

Magnetic Locking System

Instructions:

The invisible magnetic child safety lock is to prevent babies from opening a cabinet, drawer etc. So as to avoid eating and using the dangerous items inside by mistake.

Features:

1. Strong good quality magnets (magnets attract and repel each other) these principles make the locks safer and more reliable.
2. The lock won't damage the furniture and after installation the lock is neat and concealed. Which increases safety and looks neat.
3. No need for any tools for installation. Very convenient operation you only need to put the magnet on the installed part and the lock will open.

Installation Reminder

1. Please clean and dry the surface before installation to ensure the adhesive sticks properly.
2. 3M Tape. Once applied wait 24 hours before use.

Installation Instruction

Installation cradle



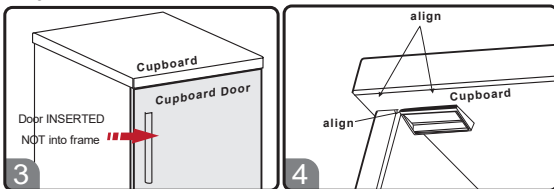
Please assemble the installation cradle first from (Fig 1) to (Fig 2) Peel off the 3M adhesive on the latch first on the installation cradle before installation.

1. Latch installation

Installation method may have to be slightly altered based on your cabinet or drawer style and design.

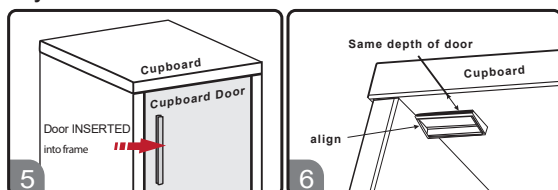
Latch installation: Cabinets or drawers come in two styles. Please identify the style relevant to you.

Style 1: Door NOT inserted into frame



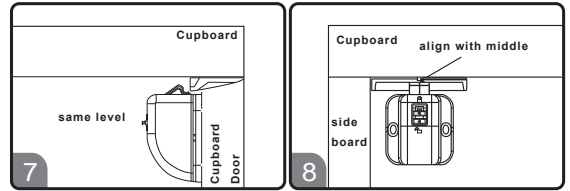
For cabinets where the door is not inserted into frame (Fig 3). Align the cradle (Fig 2) with the side frame (Fig 4) of the cabinet.

Style 2 :Door INSERTED into frame



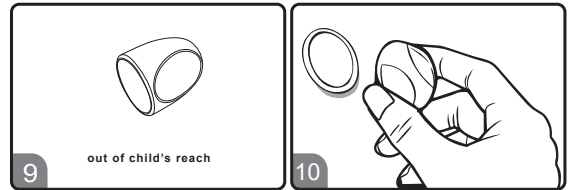
For cabinets where the door is not inserted into frame (Fig 5). Apply the cradle (Fig 2) at a depth equal to the thickness of the cabinet door.

2. Lock installation:



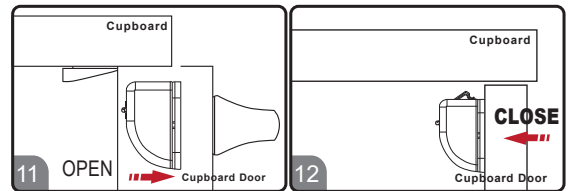
Peel off the 3M adhesive on the lock on the installation cradle, close the door. The lock is on the cabinet door (Fig 7).

3. Key Installation

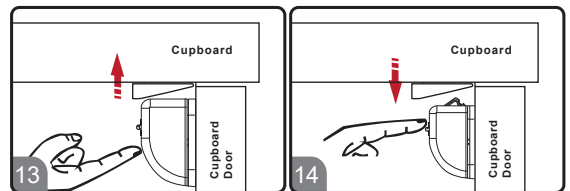


Attach the key holder to the wall, or any place out of reach of child (Fig 9, 10).

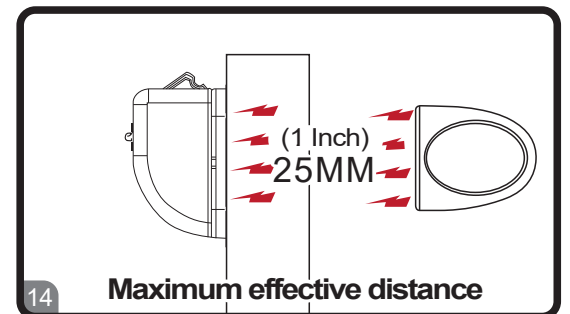
Usage



To open cabinet, touch the magnet key on the surface of cabinet door (Fig 11). To lock it, simply release the magnet key (Fig 12).



When children are not around, pull the switch up for easy quick Access (Fig 13) . To return to the lock functionality, pull the switch back down (Fig 14).



Maximum effective distance