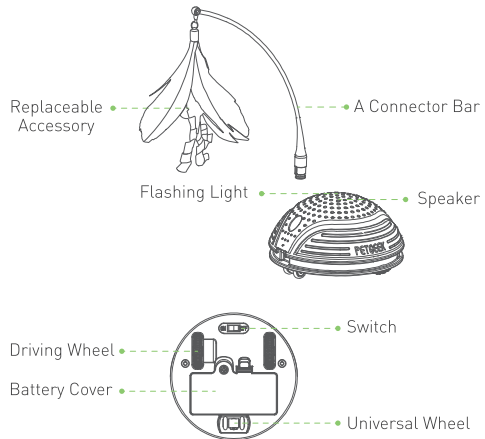


Product Overview

Running Smart



Accessories



Tech Specs

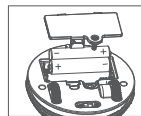
Dimension (mm)	78 (L) ×78 (W) ×43 (H)
Weight (g)	80
Material	ABS
Working Voltage (V)	3
Wattage (W)	0.1-0.5

Battery

Battery Type	2 x AAA batteries (not included)
--------------	----------------------------------

How to install batteries?

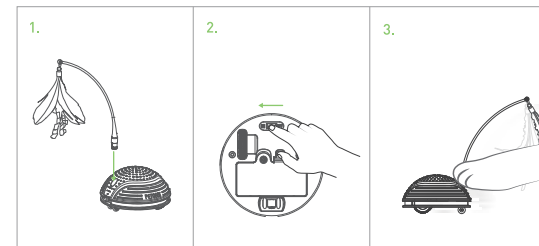
Use the screwdriver to remove the screw, then insert 2 x 1.5V AAA size batteries (not included) in the battery compartment and tighten the screw.



How to start the game?

1. Choose an accessory and plug it into the toy.
2. Set the switch for OFF to ON; pat the device and it will move in auto mode on the ground.
3. The toy will enter into standby mode after 30 seconds; pat to restart chasing game.

Note: In the first half hour of standby mode, the device will squeak and flash every five minutes to catch cat's attention.



■ WARNING

1. The device is especially designed for pets. This is not a child's toy. Please keep out of reach of children.
2. Always supervise your pet while your pet is playing. Please take away the device if it is damaged, broken or falls apart, as this may lead to undesirable injuries.
3. The toy is not washable, so please keep it away from water.
4. Check the device regularly, in case the core is damaged and the electrical power hurts the pet (Please be careful even the working voltage is very low)
5. Do not mix old and new batteries or batteries of different brands. Do not mix alkaline, standard, or rechargeable batteries. Only use batteries of same or equivalent type as recommended. Do not use rechargeable batteries.
6. Insert batteries with the correct polarity and always follow the manufacturer's instructions.
7. Remove batteries if product will be stored for an extended period.
8. Dispose of used batteries responsibly.

Keep alert, ready for hunt.

The logo consists of the word "PETGEEK" in a white, bold, sans-serif font, centered within a light green circular background.

PETGEEK

Running Smart
User Manual