

**LOW RESOLUTION  
- NOT FOR PRINT!**



**PHILIPS AVENT**

0-330 m<sup>2</sup> DECT No.1 recommended baby monitor brand in Europe! #1 in Europe! DECT baby monitor Audio monitor DECT SCD503

**PHILIPS AVENT**

The most reliable connection to your baby  
Un collegamento sicuro con il tuo bambino

Crystal clear sound,  
100 % private  
Comforting  
nightlight

Suono nitido,  
100 % privato  
Luce notturna  
confortevole



Smart ECO Mode

SCD503 DECT baby monitor Audio monitor DECT No.1 recommended baby monitor brand in Europe! #1 in Europe! 0-330 m<sup>2</sup>

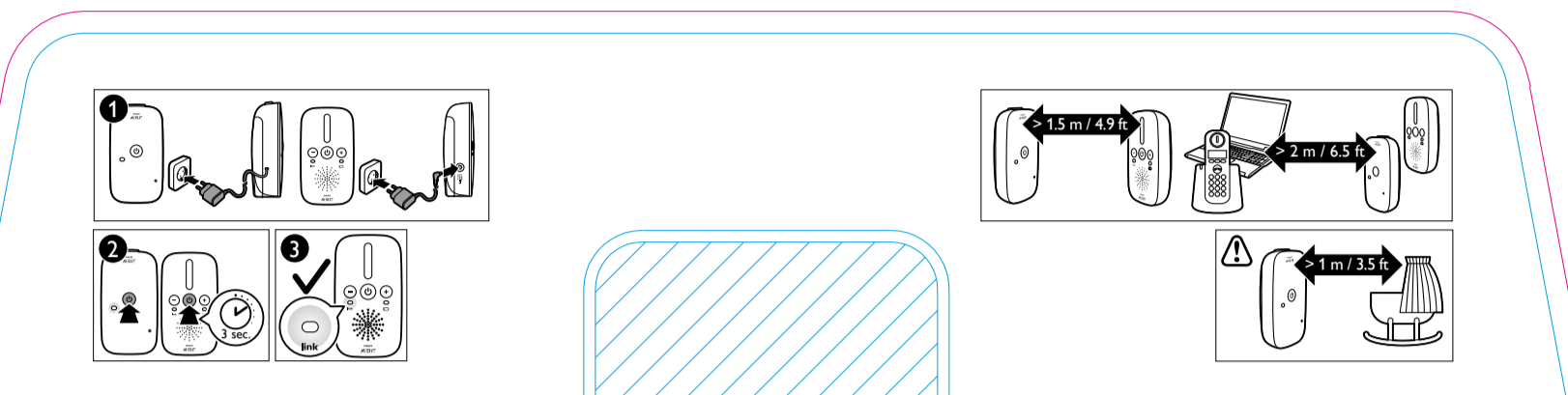
EN: Specifications are subject to modification without notice. The manufacturer may supply from time to time a different version of the product. The manufacturer is not responsible for damage caused by incorrect use of the product.  
IT: Le specifiche sono soggette a modifiche senza preavviso. Il costruttore può fornire da tempo in tempo una versione diversa del prodotto. Il costruttore non è responsabile per i danni causati dall'uso improprio del prodotto.  
NL: Specificaties zijn onderhevig aan wijzigingen zonder vooraf kennisgeving. De fabrikant kan van tijd tot tijd een andere versie van het product leveren. De fabrikant aanvaardt geen aansprakelijkheid voor schade van het gebruik van het product.  
FR: Les spécifications sont susceptibles d'être modifiées sans préavis. Le constructeur peut fournir de temps en temps une version différente de l'appareil. Le constructeur n'assume aucune responsabilité en matière de dommages causés par une utilisation incorrecte de l'appareil.  
ES: Las especificaciones están sujetas a modificaciones sin previo aviso. El fabricante puede suministrar a lo largo del tiempo una versión diferente del producto. El fabricante no se responsabiliza de los daños causados por un uso incorrecto del producto.  
PT: As especificações estão sujeitas a alterações sem aviso prévio. O produtor pode incluir nesta caixa, por vezes, versões ligeiramente diferentes de outros produtos.

24 Hrs Up to 24 hours monitoring per charge  
Fino a 24 ore di monitoraggio per carica  
Gebruiksduur tot wel 24 uur  
Jusqu'à 24 heures de surveillance par facturation  
Hasta 24 horas de uso por carga  
Até 24 horas de monitorização por carga

0-330 m<sup>2</sup> Indoor range up to 50 m, outdoor range up to 330 m  
Portata interna fino a 50 metri  
Portata esterna fino a 330 metri  
Bereik binnenshuis tot 50 meter, bereik buitenshuis tot 330 meter  
Portée intérieure jusqu'à 50 m environ  
Portée extérieure jusqu'à 330 m environ  
Alcance en interiores 50 m, alcance en exteriores 330 m  
Alcance interior até 50 m, alcance exterior até 330 m

PHILIPS Minimize transmission and saves energy  
Minimizza la potenza di trasmissione e risparmia energia  
Minimaliseert transmissie en bespaart energie  
Minimise la transmission et économise l'énergie  
Minimiza la potencia de transmisión y aumenta la duración de la batería  
Minimiza a transmissão e economiza energia

EN: Instructions included. Please retain packaging for future reference.  
IT: Istruzioni incluse. Conservare la confezione per un utilizzo futuro.  
NL: Inclusief gebruiksaanwijzing. Bewaar verpakking om later te kunnen raadplegen.  
FR: Instructions fournies. Conservez l'emballage en cas de besoin.  
ES: Instrucciones incluidas. Conservar el envase para futura referencia.  
PT: Instruções incluídas. Guarde a embalagem para referência futura.



**PHILIPS AVENT**

Crystal clear sound, 100 % private, with zero interference  
Suono nitido, collegamento privato al 100 % e assenza di interferenze  
Kristhalhelder geluid, 100 % privé, storingvrij  
Son limpide, 100 % privé, sans interférence  
Sonido nitido, 100 % privado, sin interferencias  
Som cristallino, 100 % privado, com interferência zero

Smart ECO Mode

Comforting nightlight to calm your little one  
Luce notturna confortevole per calmare il tuo piccolo  
Rustgevend nachtlampje om uw baby te kalmeren  
Veilleuse réconfortante pour votre bébé  
Tranquilizadora luz noturna para calmar a tu bebé  
Luz noturna tranquilizadora para acalmar o bebé

Volume control  
Controllo del volume  
Volumeregeling  
Contrôle du volume  
Control de volumen  
Controlo de volumen



Parent unit is mains powered or battery operated. Batteries not included (batteries do not charge in device)  
L'unità genitore funziona con l'alimentatore o con le batterie. Batterie non incluse (batterie non ricaricabili all'interno del dispositivo)  
Oudermitt werkt op netstroom of op batterijen. Batterijen niet inbegrepen (batterijen laden niet op in apparaat)  
L'unité-parent fonctionne sur secteur ou avec des piles. Piles non fournies (les piles ne se chargent pas quand elles sont dans l'appareil)  
La unidad de padres funciona con batería. Pilas no incluidas (las pilas no se cargan en el dispositivo)  
A unidade dos pais funciona com bateria. Pilhas não incluídas (as pilhas não se carregam no interior do dispositivo)

EN: Based on 2016 GemSeek survey conducted among 1,650 female users of baby monitors.  
IT: Basato su un'indagine GemSeek, effettuata nel 2016 su un campione di 1.650 utilizzatrici di baby monitor in Germania, Francia e Russia.

ADVERTENCIA! ATTENZIONE! WAARSCHUWING! AVERTISSEMENT!  
Keep this cord out of the reach of children (more than 1 meter / 3.5 feet away).  
Tenere il cavo fuori dalla portata dei bambini (più di 1 m).  
Houd dit snoer buiten bereik van kinderen (meer dan 1 meter afstand).  
Gardez ce cordon hors de portée des enfants (à plus d'un mètre).  
Mantenha este cabo este cable fuera del alcance de los niños (más de 1 metro). No quite esta etiqueta.  
Mantenha este cabo fora do alcance de crianças (a mais de 1 metro de distância). Não retire esta etiqueta.

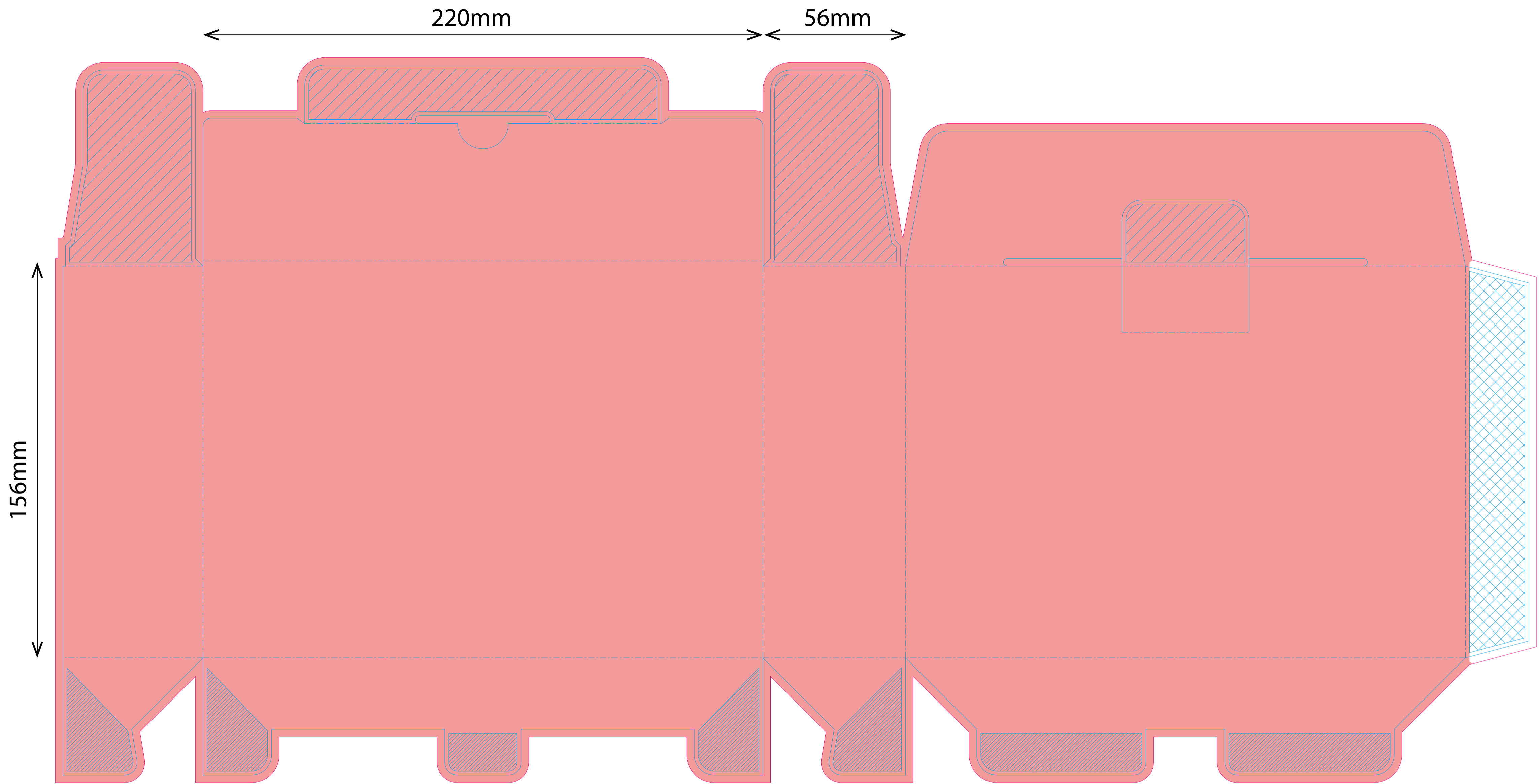
**POINT 6** Project name: ENTRY LEVEL DECT MONITOR SCD503  
42 code description: FBOX SCD503/00 WEU1 ENTRY DECT MONITOR  
Cluster/Languages: WEU1 - EN / IT / NL / FR / ES / PT (6 lang)  
Packaging 42 code: 4213 350 79511  
Previous 42 code: -  
SCF Code: SCD503/00  
IPM Number: 134734  
88 code: 8841 503 00010  
EAN/UPC Barcode: 8710103882862  
PZN code (DE only): N/A

Philips diecut reference: 42133590093\_1\_20170807  
Printer's diecut reference: N/A  
Pack dimensions: W 220 mm x H 156 mm x D 56 mm  
Printer/supplier: VTech  
Barcode scale/height: 80% / 18mm  
Bar Width Reduction: 0 - printer to apply own settings  
Printer's FSC COC number: N/A  
FSC label language: -  
® or ™ FSC logo?  
Countries of distribution: Italy, Netherlands, Belgium, Luxembourg, Spain, Portugal

**MASTER 5R**  
Version number:  
Revision date: 01 Aug 2018  
Date of 1st proof: 10 JUL 2018  
Point 6 operator: RC  
CMM email: turner.pippers@philips.com  
IPL/LCM PM email: francis.shiu@philips.com  
Point 6 job number: 16341  
Point 6 file name: 16341-SCD503-00\_WEU1\_79511\_v6R  
GMG proof colour standard reference: SCD503-26\_VTECH\_20180508  
CMYK colour profile: FOGRA 39

Colours: CMYK Pantone® 2613 C  
Varnish: Measure @ 60°, ISO 2813 >80 Gloss Units High Gloss UV Varnish  
Finishing: Cutter / Bleed

View on printed side Die cut on printed side		TOLERANCES DIE CUT ON PRINTING DIMENSION ± 1 mm		Change log		
UNIT	MATERIAL			1	created after alignment with supplier	
				1	Generalized the material spec notation	
					Glued area	
					Non visible area	
					Non visible area when box is closed	
					BANNED SUBSTANCES	
					In compliance with Regulated Substances List: CSO-BP01-2013-001	
SCALE	TREATMENT			DATE		
1:1	Printed CMYK, folded, glued			1	13 Nov 2013	
				1	07 Aug 2017	
PHILIPS CL PACKAGING DEVELOPMENT	TITLE	12NC		4213 359 0093		
	MASTER FBOX LOW END DECT MONITOR SCD501					
NAME	Josse Ruiter					
EMAIL	josse.ruiter@philips.com		SOFTWARE	ARTIOS CAD 7.6	PLATFORM	MICROSOFT WINDOWS
SH.110 - 01					©ROYAL PHILIPS N.V. 2013	



Point 6 Design Ltd  
The Linen House  
253 Kilburn Lane  
London W10 4BO  
United Kingdom  
www.point6.co.uk  
+44 (0)20 8962 5880

Project name: ENTRY LEVEL DECT MONITOR SCD503  
42 code description: **FBOX SCD503/00 WEU1 ENTRY DECT MONITOR**  
Cluster/languages: **WEU1** - EN / IT / NL / FR / ES / PT (6 lang)  
Packaging 42 code: **4213 350 79511**  
Previous 42 code: -  
SCF Code: **SCD503/00**  
IPM Number: **134734**  
88 code: 8841 503 00010  
EAN/UPC Barcode: 8710103882862  
PZN code (DE only): N/A

Philips diecut reference: 42133590093\_1\_20170807  
Printer's diecut reference: N/A  
Pack dimensions: W 220 mm x H 156 mm x D 56 mm  
Printer/supplier: VTech  
Barcode scale/height: 80% / 18mm  
Bar Width Reduction: 0 - printer to apply own settings  
Printer's FSC COC number: N/A  
FSC label language: -  
® or ™ FSC logo? -  
Countries of distribution: Italy, Netherlands, Belgium, Luxembourg, Spain, Portugal

**MASTER** **5R**

Version number:  
Revision date: **01 Aug 2018**

Date of 1st proof: 10 JUL 2018  
Point 6 operator: RC  
CMM email: turner.pijpers@philips.com  
IPL/LCM PM email: francis.shiu@philips.com

Point 6 job number: **16341**  
Point 6 file name: 16341-SCD503-00\_WEU1\_79511\_v6R

GMG proof colour standard reference: SCD503-26\_VTECH\_20180508  
CMYK colour profile: FOGRA 39

Colours:

Varnish: Measure @ 60°, ISO 2813  
**> 80** Gloss Units  
High Gloss UV Varnish

Finishing:  
Cutter / Bleed



View on printed side Die cut on printed side		TOLERANCES DIE CUT ON PRINTING DIMENSION ± 1 mm	Change log
UNIT	MATERIAL		1 created after alignment with supplier JBR
mm	Corrugated Cardboard F-Flute + recycled top liner		1 Generalized the material spec notation KWQ
SCALE	TREATMENT		
1:1	Printed CMYK, folded, glued		
PHILIPS CL PACKAGING DEVELOPMENT	TITLE	12NC	
	MASTER FBOX LOW END DECT MONITOR SCD501	1	13 Nov 2013
		1	07 Aug 2017
NAME	Josse Ruiter		
EMAIL	josse.ruiter@philips.com		
SH.110 - 01		SOFTWARE	ARTIOS CAD 7.6   PLATFORM MICROSOFT WINDOWS
			©ROYAL PHILIPS N.V. 2013

