

SAVE THESE IMPORTANT SAFETY INSTRUCTIONS

Please read all instructions before using this appliance.

These instructions are also available on our website. Please visit

www.hot-europe.com



WARNING: Do not use this appliance near bathtubs, showers, basins or other vessels containing water.

WARNING: This appliance must not be taken into the bathroom.

This appliance can be used by children aged from 8 years and above, and by persons with reduced physical, sensory or mental capabilities or lack of experience and knowledge if they have been given supervision or instruction concerning use of the appliance in a safe way and understand the hazards involved.

Children shall not play with the appliance.

Cleaning and user maintenance shall not be made by children without supervision.

If the supply cord is damaged, it must be replaced by the manufacturer, its service agent or similarly qualified persons in order to avoid a hazard.

WARNING: Do not leave the appliance unattended. Do not allow bare skin or the eyes to come into contact with any heated surface on the appliance when in use. Do not place the appliance on any heat-sensitive surfaces when hot or plugged into the mains. Always unplug the appliance when not in use.

WARNING: Do not use this appliance on synthetic hair or wigs.

NOTE: Use on dry hair only.

WARNING: Should this product malfunction, do not attempt to repair it. This appliance has no user-serviceable parts or components.

This product carries the CE mark and is manufactured in conformity with the Electromagnetic Directive 2014/30/EU, the Low Voltage Directive 2014/35/EU, the ROHS Directive 2011/65/EU and the Energy and using Products Directive 2009/125/EC.

GUARANTEE AND SERVICE SECTION:

Your Revlon appliance is guaranteed against defects under normal use for 4 years from the original date of purchase. If your product does not perform satisfactorily because of defects in materials or manufacture, within the warranty period, it will be replaced. Please retain your receipt or other proof of purchase for all claims within the warranty period. The guarantee becomes void if the proof of purchase is not presented. For all claims within the warranty period please contact our Support Team.

This guarantee does not cover defects which have occurred due to misuse, abuse, or are caused by failure to follow the instructions contained within this manual.

This does not affect your consumer statutory rights. The manufacturing date is given by the 4 digit Batch Number marked on the rear of the product.

The first 2 digits represent the week of manufacture, and the last 2 digits represent the year of manufacture. Example: 3418 - product manufactured week 34 of the year 2018.

For product support, please visit us at:

www.hot-europe.com/support

Or contact us by phone:

+44 (0) 115 965 7430

For product information, visit us at:

www.revlonbeautycare.com



This appliance complies with EU legislation 2012/19/EU on end of life recycling. Products showing the 'Crossed Through' wheeled bin symbol on either the rating label, gift box or instructions must be recycled separately from household waste at the end of their useful life.

Please DO NOT dispose of appliance in normal household waste.

Your local appliance retailer may operate a 'take-back' scheme when you are ready to purchase a replacement product, alternatively contact your local government authority for further help and advice on where to take your appliance for recycling.

120-240V - 50-60Hz 60W

The REVLON® trademark is used under license from Revlon, by Helen of Troy Limited.

Made in China.

European Headquarters

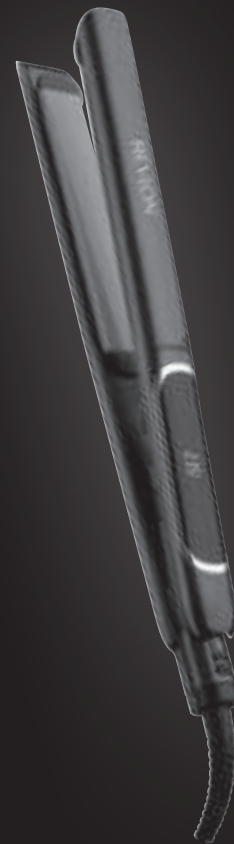
Kaz Europe Sàrl, Place Chauderon 18, CH-1003 Lausanne, Switzerland.

HOT (UK) Ltd, 1-4 Jessops Riverside, 800 Brightside Lane, Sheffield, S9 2RX United Kingdom.

©2018 Revlon. All rights reserved. (AW011636)

AW ISSUE No#: 1 Date: 02.06.18

REVLON®



SALON STRAIGHT COPPER SMOOTH™ STYLER

RVST2175UK



OPERATING INSTRUCTIONS

This appliance is intended for household use only. The appearance of this appliance may differ from the illustration. Only use this appliance for its intended purpose as described in this manual.

ADVANCED COPPER 3X[†] CERAMIC PLATES - Ultra-smooth Advanced Copper 3X Ceramic Coating transfers heat fast and helps reduce damage from over-styling with even heat distribution for smooth 24 hour frizz control.

SMART HEAT MEMORY SYSTEM - State-of-the-art design automatically recalls the last temperature as your preferred heat setting.

COLOUR FADE CONTROL[†] - Preserves hair colour temperature settings of 200°C or below.

TRUE-GRIP ROUNDED PLATES - Floating plate for smooth glide. Rounded plates create curls or loose waves.

PLATE-LOCKING SWITCH - For easier storage, the plates of the straightener can be locked together. To engage the plate-locking switch, first turn the appliance off and unplug it. Push the plate-locking switch in the direction of the plates while holding the handles together to lock the plates. To unlock, hold the handles together and push the plate-locking switch in the direction of the cord. **WARNING: DO NOT** engage the plate-locking switch during styling, and **DO NOT** lock the plates onto hair, as serious damage to hair or even injury could result.

OPERATING THE SALON STRAIGHT STYLER - Straighteners should be used only on clean, dry hair. Plug the power supply cord into a mains socket. To turn the straightener on press the "On/Off" button. The straightener automatically sets to 80°C. Choose your temperature according to your hair type. Use the temperature buttons (+/-) to select the heat level best suited to your hair type. Allow the appliance at least 15 seconds heating time. **NOTE:** Once temperature is selected the temperature setting will blink for 15 seconds. Once the temperature stops blinking and becomes solid, the straightener is ready to use. When changing temperature settings, you will see the temperature flashing until the selected temperature is reached. For best results, follow the 30 LCD Heat Settings guidelines below:

Hair Type	Temperature °C
Fine, thin colour-treated hair	80 - 150
Medium to wavy hair	155 - 175
Curly to thick hair	185 - 200
Coarse, hard-to-style-hair	205 - 235

STYLING TIPS - With the extra-long plates, you can separate your hair in up to 8cm sections. Gently place hair between the straightening plates and clamp the straightener down firmly on the hair. You will achieve professional results if you work from the scalp to the ends of your hair. Once the straightener is heated slide the straightener along the isolated section, making sure the hair is heated and straightened all the way to the ends. The ends will probably require less heat than the hair that grows closer to the scalp. For best results, hold the ends of the hair while smoothing the hair section. To remove hair from the straightener, simply release pressure and allow the hair to gently slip out from the straightening plates. The smoothing process does not require overlapping; separate each section of hair and work on it as indicated above. Allow hair to cool before combing or brushing. Repeat the process until you have achieved the look you desire.

AUTOMATIC SHUT-OFF - Your appliance has an Automatic Shut-off feature. Should you forget to turn off the appliance, it will automatically shut off after one hour.

AUTOMATIC WORLDWIDE DUAL VOLTAGE - This appliance will automatically adjust to the correct voltage.

CLEANING - Always unplug the appliance from the mains after use and allow it to cool before cleaning. To clean, wipe the appliance and plates with a damp cloth. Make certain the appliance is completely dry before using. Keep heated surfaces clean and free of dust, dirt, styling sprays and gels.

STORAGE - Always unplug when not in use.

Allow the appliance to cool before storing. Lock plates by following instructions above (PLATE-LOCKING SWITCH). This will conserve space and help protect the appliance when not in use. Always store in a dry location. Do not pull or twist the cord. Do not wrap the cord around the appliance, as this may cause the cord to wear prematurely and break. Regularly check the power cord for wear and damage (particularly where it enters the appliance and the plug).

IMPORTANT: The high-performance heater in this unit contains an oil-based protective coating that will burn off during the first few minutes of initial use and may emit smoke and/or an odor. You may also hear a humming noise during use. This is normal and is not a cause for concern.

FEATURES

- A. ADVANCED COPPER 3X CERAMIC XL PLATES
- B. LCD DIGITAL TEMPERATURE DISPLAY WITH 30 VARIABLE DIGITAL LCD HEAT SETTINGS
- C. PROFESSIONAL SWIVEL CORD
- D. PLATE LOCKING SWITCH
- E. ON/OFF POWER BUTTON
- F. SEPERATE '+' & '-' TEMPERATURE BUTTONS
- G. 25MM TRUE-GRIP ROUNDED PLATES



[†] When used on a setting of 200°C or below. Based on testing by an independent third party lab. Testing is based on comparing use at 200°C vs. 230°C.

^{††} As compared to RVST2176.