

User Guide Book



G15 Pet Bell GPS Tracker

Hello, World !



Scan the either QR code to download tracking APP,
first is "GPS365" (Pro) , second is "365GPS" (Lite)

Tracking Web: www.365gps.net

Android APP: **365GPS(default) / GPS365**

iOS APP: **365GPS(default) / GPS365**

Login ID: IMEI number (15 digits sticker on the device)

Default password: the last 6 digits of imei

Main feature:

- Network: GSM 850/900/1800/1900MHz, GPRS Class 12
- High level waterproof case and durable anti-scratch engineering ABS housing
- Positioning modes: GPS + AGPS + Wifi(optional) + LBS
- Tracking System: APP + Web + SMS command
- Track + Historical Trace Playback + Geo-Fence
- GPS location accuracy: within 10 meters outdoor(may be affected by the environment)
- Wifi location accuracy: within 50 meters(optional for some models)
- LBS location accuracy: above 100 meters
- Working Temperature: -20°C~45°C/ Humidity: 5%~95%
- Dimension and Weight:
 - G15 size: D=36.8*H=36.8mm
 - G15 weight: about 24g (without accessories)
- Ultra small size and light weight for all pet dog/cat/birds..ect

1、 Preparation work

1. Please prepare a nano SIM card which support both GSM and GPRS network, turn off PIN code.

Note:

A: The tracker consumes about 30MB GPRS data per month.

B: GPRS data featured sim card is preferred

C: If your local 3G/4G sim card is compatible with GSM/GPRS

network, it can be used for our tracker as well

2. Download and install our free mobile APP in your phone.

2、 Power on the GPS and make GPS online

Reference Photo as below:



Open the GPS tracker cover and Insert the SIM card

Power On: long press power key for 3seconds(red LED will light up and blinking after 2 seconds)

Power off: long press for 9 seconds (red LED with light up then off)

Attention:

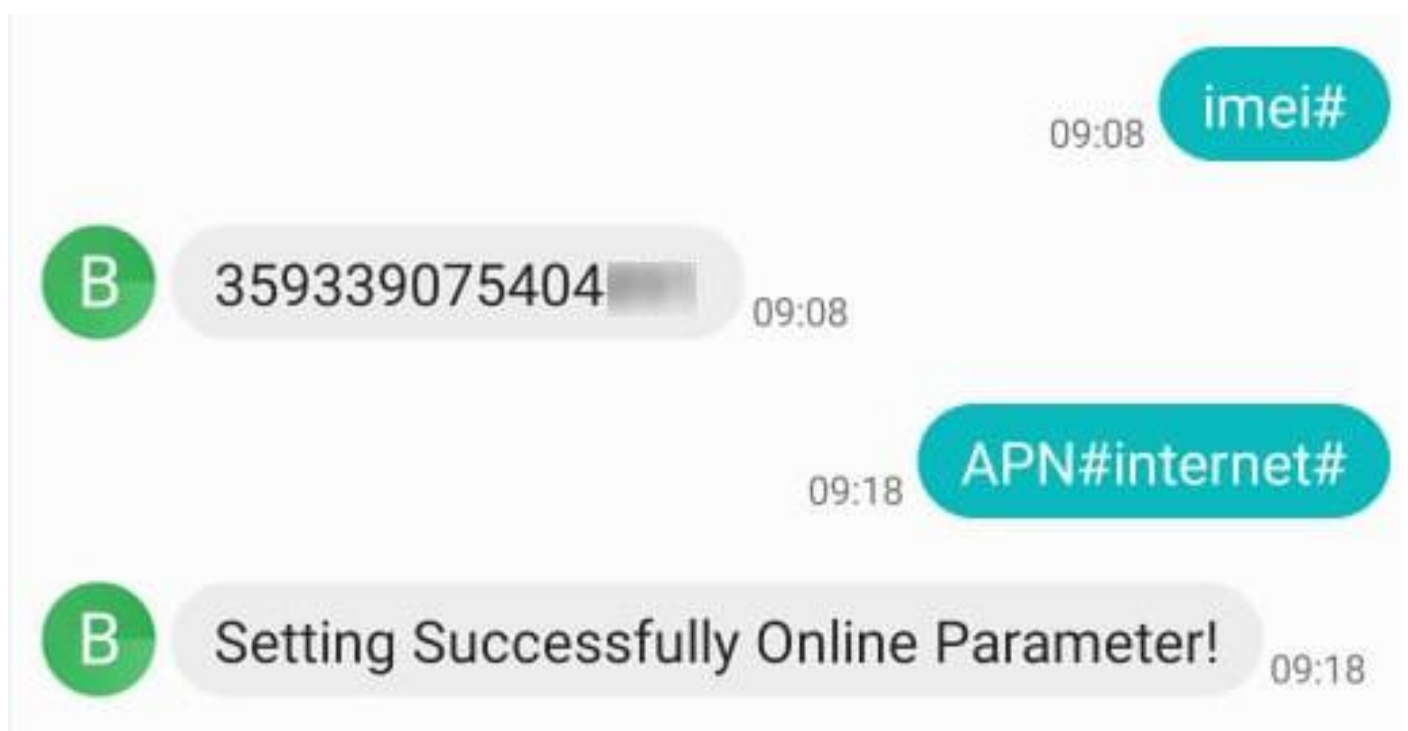
After the GPS tracker power on for 2 minutes with red LED blinking, you may meet the following conditions:

Condition A: if the red LED blinking slow, that means GPS is online, please use APP GPS365/ PC web to track it directly.

Condition B: if the yellow LED blinking fast, please send SMS command ""imei#" first, then check as following:

a: If the GPS tracker response your phone with correct 15 digits imei #, then please send SMS command to set APN:

Attention: sim card from different telecom operators come with different APN parameters, you can put the sim card in your phone to get the correct APN parameter



APN settings: “APN#parameter#account#password#
If your gps sim card don't have account and password,
then send “APN#parameter#” only.

b: If the tracker don't response your phone with 15 digits imei No., please power off the tracker and test sim card from other

telecom operators.

Close the top cover



Attention: Please close the top cover tightly to keep waterproof

3、LED lights

Red LED blinking indication:

Slow blinking: GPS tracker GPRS data is getting through with server, it's online in APP/Web/Server

Fast blinking: Invalid SIM/ Without SIM/ GPS tracker offline

long brighting: Battery recharging


LED off: Power off/ LED was turned off in APP/ Sleeping mode

4、Login the GPS tracker in APP/Web

Scan the QR code or input the IMEI # to login the APP.

Login ID: IMEI number (15digits)

Password: the last 6 digits of imei



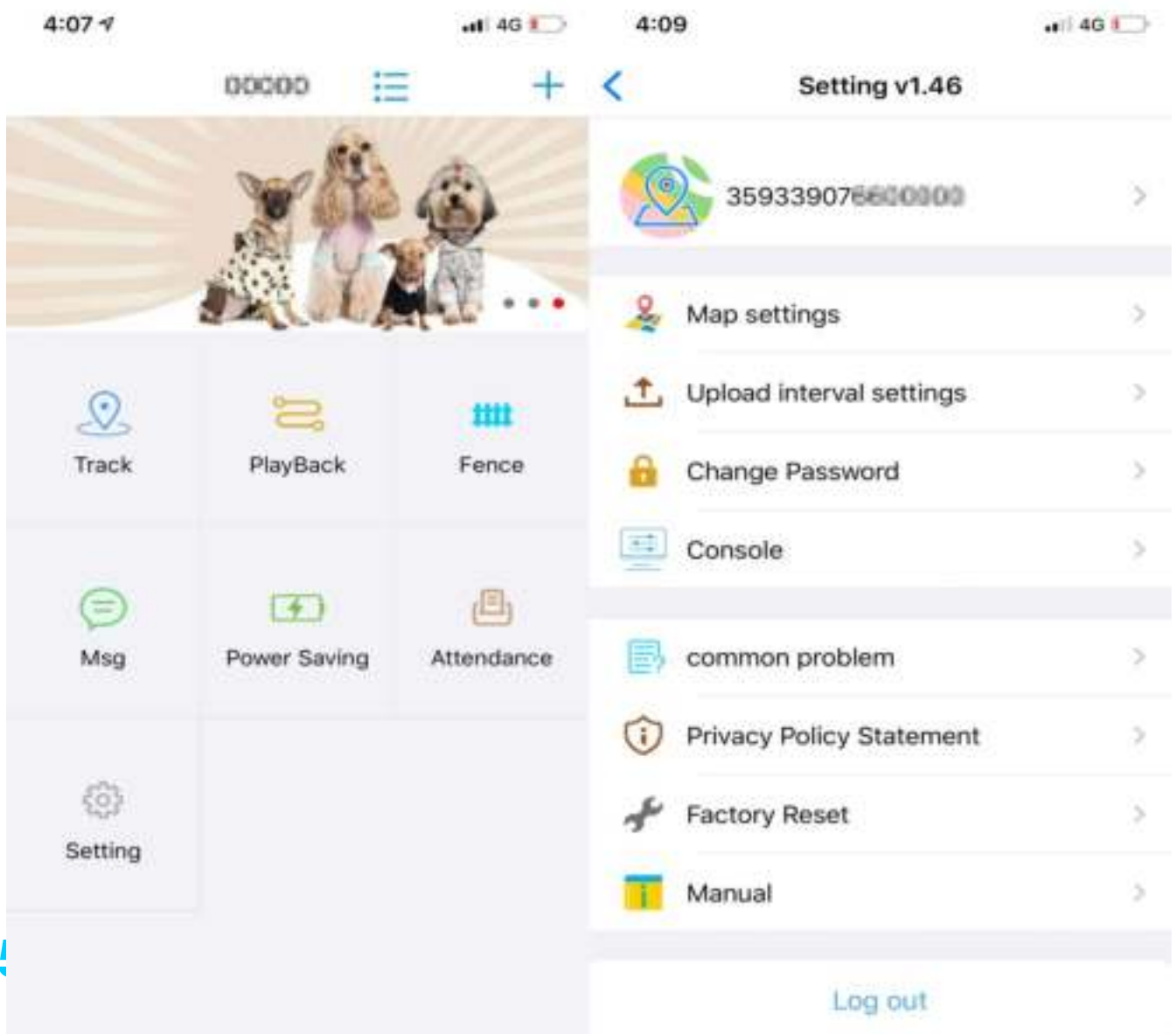
The screenshot shows the login interface of the app. At the top, there is a circular icon with a location pin and a QR code. Below it are two input fields: "Enter the Ac/imei" and "Please enter password". A "Forgot password" link is positioned below the password field. A large blue "LOGIN" button is at the bottom. A QR code is also visible on the right side of the screen, which is linked to a circular inset image of a white GPS tracker with a barcode. The barcode on the tracker contains the number 359339076600000.

Input 15 digits IMEI

Input password
Default password:
The last 6 digits of imei

You can also click here and use your phone camera to scan the GPS tracker QR code to login APP automatically

5、 Main Functions:



The screenshot displays the main menu and settings page of the app. The top status bar shows the time as 4:07 and 4:09, along with 4G signal strength and battery levels. The app title "Setting v1.46" is visible at the top right. The main menu is divided into two columns. The left column contains icons for "Track", "PlayBack", "Fence", "Msg", "Power Saving", "Attendance", and "Setting". The right column contains a list of settings: "359339076600000" (with a location pin icon), "Map settings", "Upload interval settings", "Change Password", "Console", "common problem", "Privacy Policy Statement", "Factory Reset", and "Manual". A "Log out" button is located at the bottom right of the settings list.

4:07 4G 4:09 4G

Setting v1.46

359339076600000

Track PlayBack Fence

Msg Power Saving Attendance

Setting

Map settings

Upload interval settings

Change Password

Console

common problem

Privacy Policy Statement

Factory Reset

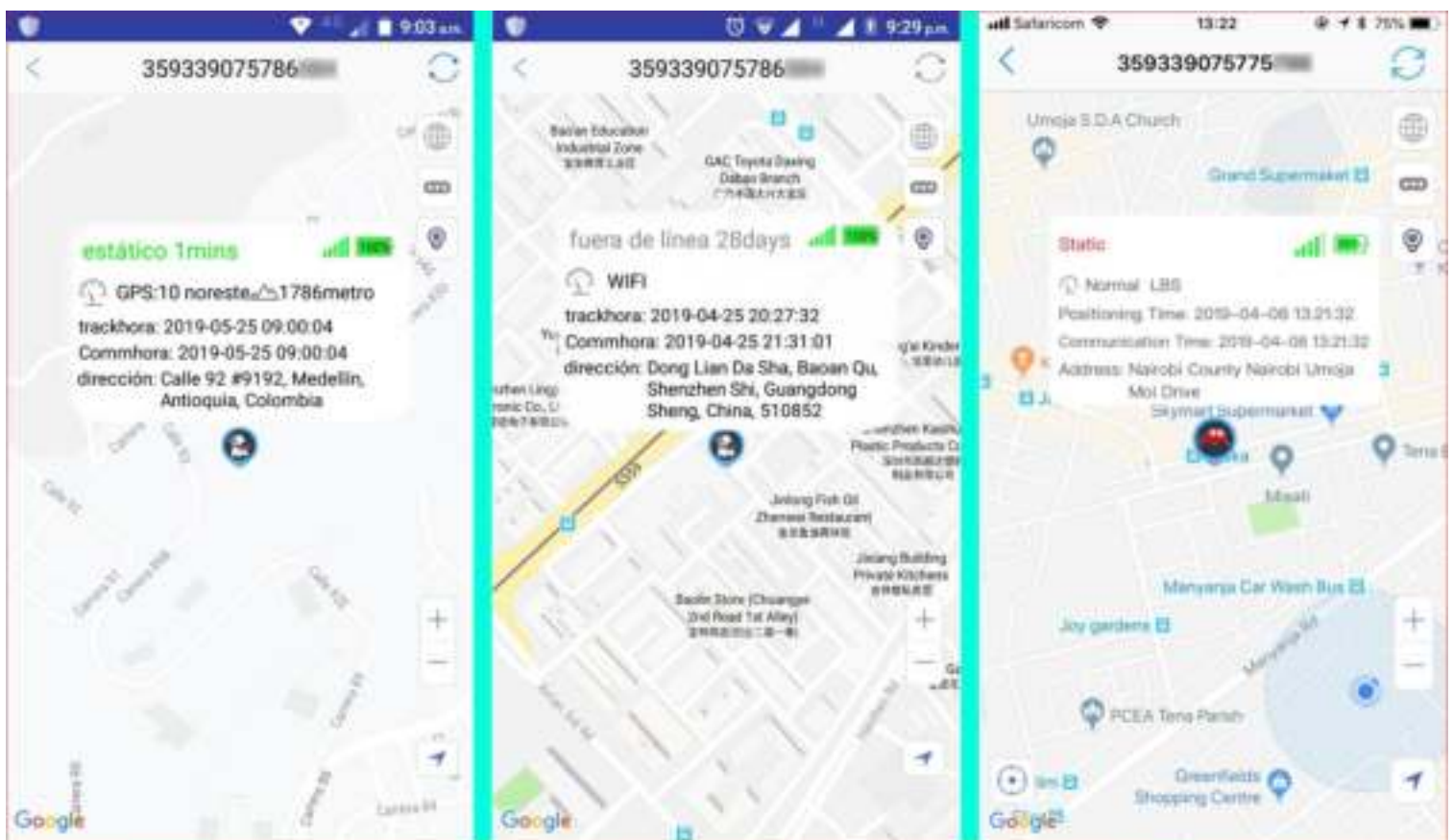
Manual

Log out

A: GPS positioning: when the GPS tracker stay outdoor/good GPS satellite signal environment, a accurate GPS location

B: Wifi positioning: when indoor device will capture the wifi router MAC address and take the MAC address as location.

C: LBS positioning: when both GPS and wifi signal are not available for the device, it will give you a general location according to the nearest GSM signal tower around it.



GPS Location

Wifi Location

LBS location

GPS tracker location accuracy:

GPS: about 10 meters outdoor

Wifi: about 50-500 meters. Attention that wifi location visits telecom carrier's database to get location , in some countries' the carriers' database not open to the public, maybe wifi location can't work, for example Germany.

LBS: above 100 meters. Depends on how many Base Station Towers around the GPS tracker. Normally, if the tracker stay in

the city, the LBS location accuracy will be much more accurate than that stay in the countryside.

Remind: you can turn off LBS/GPS location function to save battery if it's necessary. Also Power/on by Alarm setting in this page to save battery.

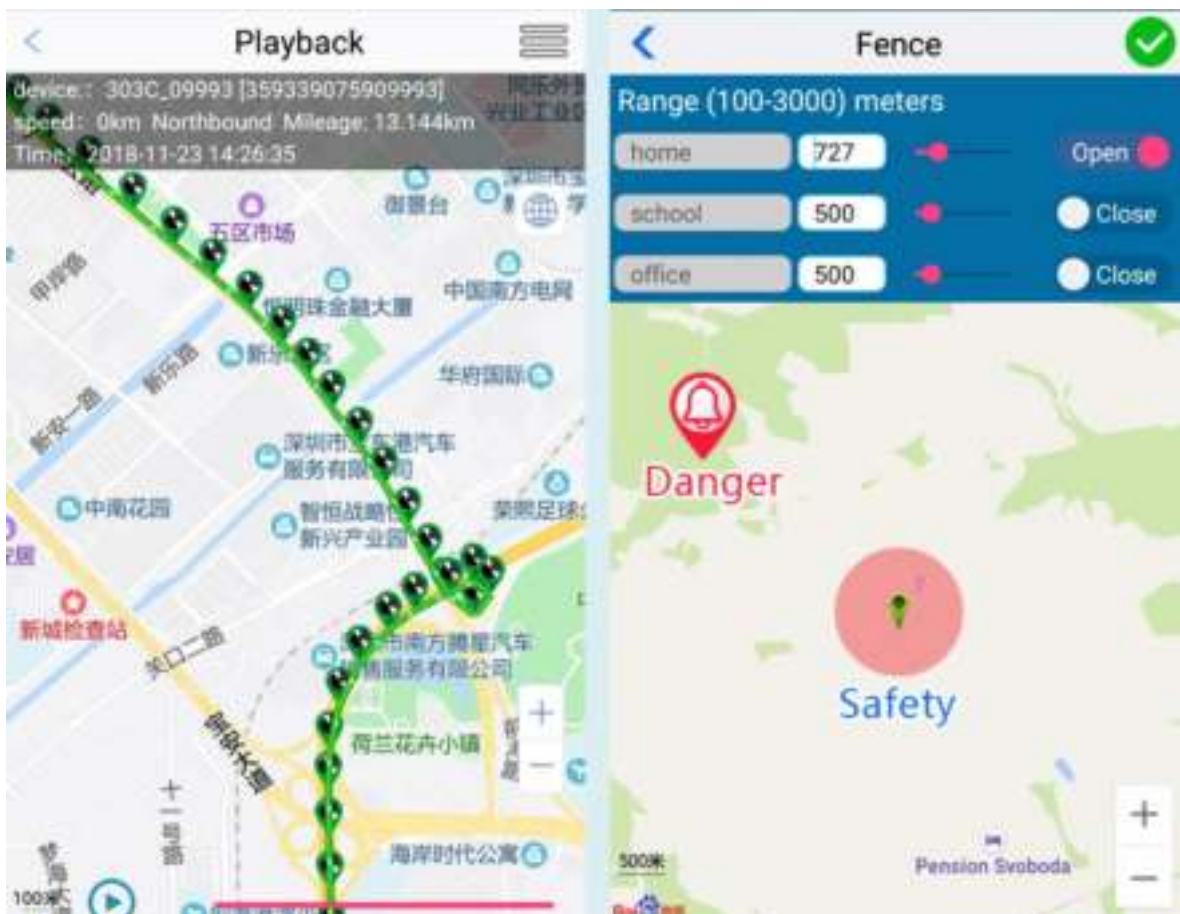
5b、 Playback and Geo-fence

5b1: Playback:

Please choose the start time and end time and other options in the APP to check the historical trace of your GPS tracker and show it on the map as below.

5b2: Geo-fence:

You can set a security range for your pet on the map in your app, once your GPS tracker out of the preset safe range, you will get alarm.



Please enable "Push Notification" and "Vibration alarm" in the

setting menu, if someone moved your GPS tracker, the tracker will send vibration alarm push message to your phone timely.

6、 Related SMS commands

6.1 Inquire IMEI No.: “imei# ”

6.2 Restore default password: “pwrst”

6.3 Restore to the factory settings: “1122”

6.4 Set Upload interval:

“time#minute”(minute range 1-120minute);

“md#second”(second range 10-60seconds)

6.5 Turn on/off LED: “LED#on , LED#off”

6.6 APN settings: “APN#parameter#account#password#”

6.7 Remote Restart: “sysrst”

6.8 Vibration Alarm: “6666#on# / 6666#off#”

6.9 Heartbeat Packet Time: heartbeat#No. #(no.=second)

6.10 Turn off GPRS data and location function: link#0#

6.11 Turn on GPRS data and location function: link#1#

6.12 Control Auto Power On/Off:

“pwonoff#day,hour,minute#day,hour,minute”

(for example: pwonoff#0,0,10#0,2,0 -- mean: the GPS tracker will work for 10 minutes then power off and after 2 hours later it will power on automatically again.)