

**PAPER STOCK**  
E-flute white virgin FSC certified



www.philips.com/support

overging fra dag til dag i din seneste...  
**RelaxBreathe** – lys og lyd til din seneste...  
**Somneo** – lys og lyd til din seneste...  
**Wake-Up Light** – lys og lyd til din seneste...

**PHILIPS**

**Somneo**

Sleep & Wake-Up Light

**PHILIPS**

**Somneo**

Sleep & Wake-Up Light

overgi viden til din seneste...  
**Wake-Up Light** – lys og lyd til din seneste...  
**Somneo** – lys og lyd til din seneste...  
**Wake-Up Light** – lys og lyd til din seneste...

4222 063 75722

8 710103 919293

HERSTELLT VON PHILIPS LIGHTING B.V. ROTTERDAM, NEDERLANDEN

© 2017 PHILIPS LIGHTING B.V. ALLE RECHTEN VOORBEHOUDEN.

**PHILIPS**

**Somneo**

Sleep & Wake-Up Light

**PHILIPS**

**Somneo**

Sleep & Wake-Up Light

overgi viden til din seneste...  
**Wake-Up Light** – lys og lyd til din seneste...  
**Somneo** – lys og lyd til din seneste...  
**Wake-Up Light** – lys og lyd til din seneste...

**PHILIPS**

**Somneo**

Sleep & Wake-Up Light

2 Jahre Garantie

2 Jahre Garantie

Entspannt einschlafen und erholt aufwachen

Das Wake-Up Light, das beim Einschlafen hilft

Endormez-vous détendu, réveillez-vous reposé

Le Wake-Up Light vous aide à vous endormir

Weltweit führende Wake-Up Light Marke

100 Jahre + Philips Expertise in Lighting and Healthcare

Marque de Wake-Up Light réputée mondialement

Le savoir-faire de 100 ans de Philips en éclairage et soins de santé

**PHILIPS**

**Somneo**

Sleep & Wake-Up Light

HF3651

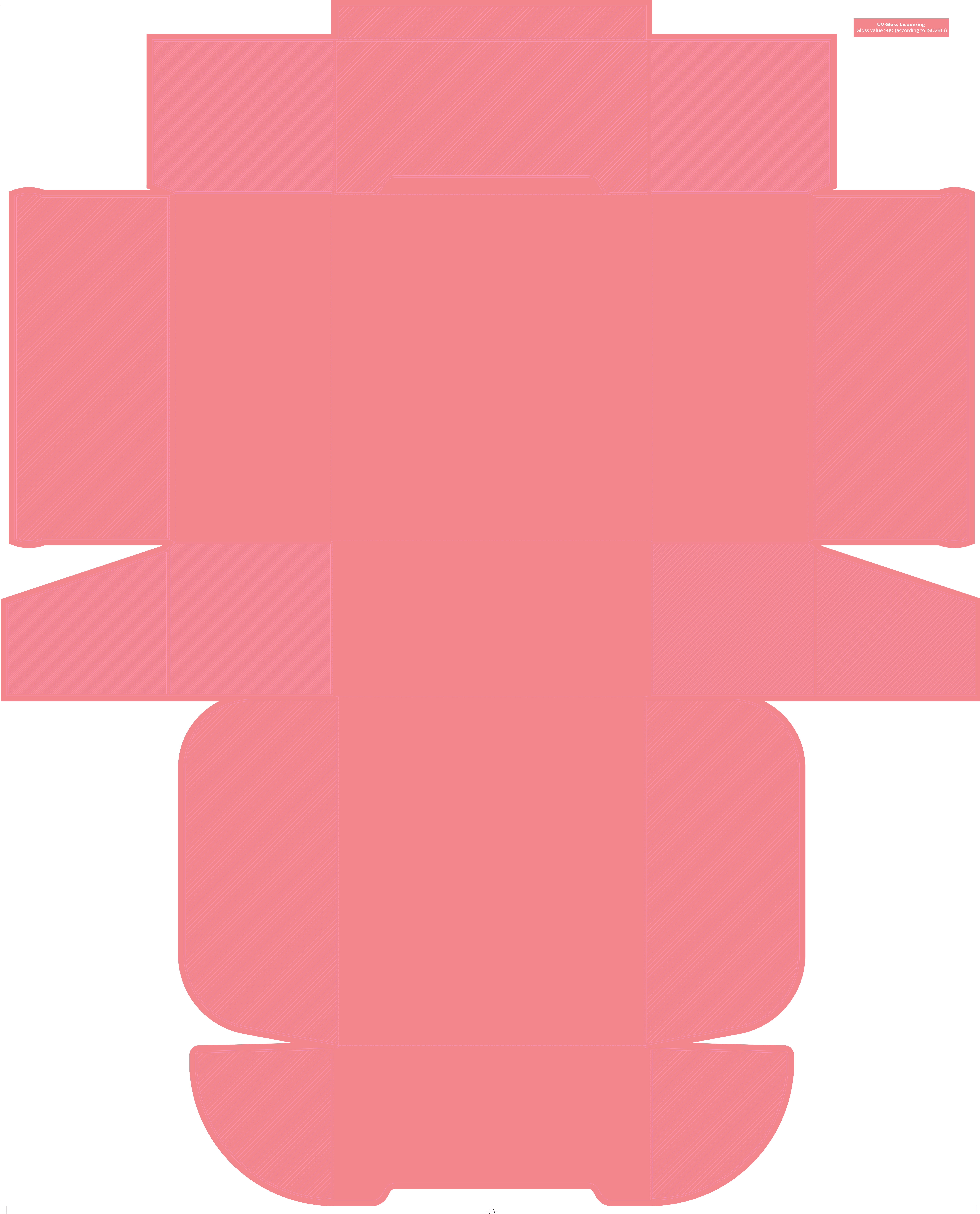
Fall asleep relaxed and wake up refreshed

The Wake-Up Light that helps you sleep

Globally leading Wake-Up Light brand

100yrs+ Philips Lighting and Healthcare expertise





**UV Gloss Lacquering**  
Gloss value >80 (according to ISO2813)

PHILIPS CONSUMER LIFESTYLE	
Man Article Group	Vita Light (857)
Project name	HF3651_01_WEU_V2_75722
SSS number	2162402
12-NC-NBR	42226473722
Masterdrawing	42226473722.L
Barcode No.	87101081932
Size	BWR Type
Operator(s)	jos.whitehouse
VERSION No.	2
Date in	28/08/2017
Date amended	29-Aug-17
Color	<input type="checkbox"/> Cyan <input type="checkbox"/> Magenta <input type="checkbox"/> Yellow <input type="checkbox"/> Black <input type="checkbox"/> High Gloss <input type="checkbox"/> Matte
<b>Date Check</b>	
<input type="checkbox"/> Check to Client Brief	
<b>Artwork document</b>	
<input type="checkbox"/> Legend	<input type="checkbox"/> Number of colors
<input type="checkbox"/> 12NC	<input type="checkbox"/> Trapping/Bleed
<input type="checkbox"/> Barcode	<input type="checkbox"/> Hi-res Images
<input type="checkbox"/> Diecut	<input type="checkbox"/> Job Size
<b>Deliverables</b>	
<input type="checkbox"/> PDF 1.3	<input type="checkbox"/> Epson
<input type="checkbox"/> PDF 1.5	<input type="checkbox"/> Leiffile
<b>Approval</b>	
<input type="checkbox"/> QC Lithographer SGS	
<input type="checkbox"/> Product Manager	
<input type="checkbox"/> Project Manager <small>josip.bosnjak</small>	