

PXN®

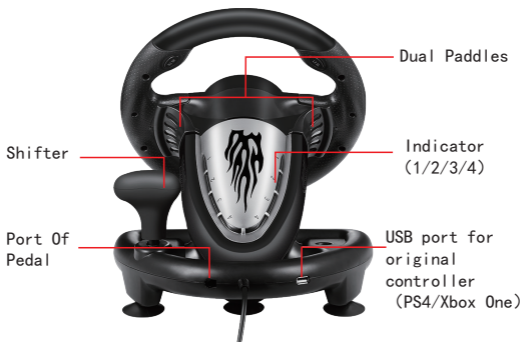
PXN-V3PRO



RACING WHEEL  
**USER MANUAL**

Thank you for choosing PXN's product and supporting our brand. Please read the manual carefully before using.

## ● Product Overview



## ● Function Features

1. Compatible with PC/PS3/PS4/XBOX-ONE/SWITCH consoles ;
2. Built-in dual vibration motor, to bring you a more realistic racing experience ;
3. Imitation racing wheel ergonomics design, 180 turning angles and rubber grip ;
4. Collapsible simulation pedals with Gas and Braking control ;
5. Strong suction cups, and C-type grip, easy to use on different surface fixed ;
6. With X-input/D-input function for PC;
7. The dead zone of direction, refueling and braking is adjustable in D-Input mode.

## ● System Requirements

Support Platform : PC/PS3/SWITCH/PS4/XBOX ONE

Support System : Microsoft Windows XP/7/8/10

## ● For use with PC

### **Installation**

1. Browse our homepage ( [www.e-pxn.com](http://www.e-pxn.com) ) download and install the driver. The specific path is : [www.e-pxn.com](http://www.e-pxn.com) ---Support--- Driver---PXN-V3.
2. Download t he "PXN-V3" drive and then press the instructions to extract the installation.

3. Plug the pedals into the port of steering wheel base and plug the USB of steering wheel into the computer USB port. The computer will be prompted to discover the new hardware and complete the drive installation.

### **MODE Selection**

1. When connecting the racing wheel is default to X-input mode , press "HOME" for 3 seconds change into D-input mode , the red LED is bright.

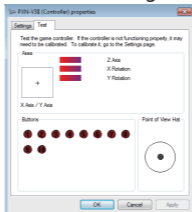
X-input ← Press "HOME" 3S → D-input

2. X-input MODE is compatible with Games for windows , Plug and play , such as: "Need for Speed 13" above version, "Dust2/3", "Ridge Racing: Unlimited" and so on.
3. D-input MODE is compatible with early PC racing games, such as: "Need for Speed 1-12" , Euro Truck Simulator and so on.

### ● X-input mode

1. Connect the racing wheel to the USB port of the computer, default to X-input mode, Red LED light on.
2. Function Texting:  
It can go through function texting by computer game controller under PC computer use.

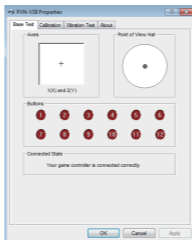
- XP system, click Control Panel--- game controller, click Properties to test the racing wheel.
- WIN7 system above, click Control Panel--- Devices and Printers---right-hand button click gamepad icon---game controller settings, click Properties to test the racing wheel.



## ● D-input mode

1. Under X-input mode, Press "HOME" for 3 seconds Switch to D-input.

2. Click the Properties button and enter the next figure test interface, then you can test the Axes and Buttons.



### 3.Vibration Test :

Click "Vibration Test" to test motor vibration, while the vibration intensity can be adjusted freely.



## Program Functions(Without memory)

- 1.Program source button: X/B/Y/A/L1/L2/R1/R2 ;
- 2.Programmable button: L-Paddle, R-Paddle, Accelerator, Brake,L3,R3, Shifter.

## **Program setup**

1. Press SHARE + OPTIONS, Hold for 3 seconds until the green LED is on.
2. Press the programmable button, and the green LED starts blinking.
3. Press program source button. The green LED is off. Program is set.

## **Clear single program**

1. Press SHARE + OPTIONS, Hold for 3 seconds until the green LED is on.
2. Press programmed button and the green LED starts blinking.
3. Press programmed button again and the green LED is off. Single programmed button is cleared.

## **Clear all programs**

1. Press SHARE + OPTIONS, Hold for 3 seconds until the green LED is on.
2. Press OPTIONS and hold for 4 seconds. The green LED is off. All of the programmed buttons are cleared. Default is restored.

Note: All of the settings will NOT be cleared when the wheel is power off. All settings

will be cleared out after all program setting been cleared out.

### **Program Pedals as Y axis**

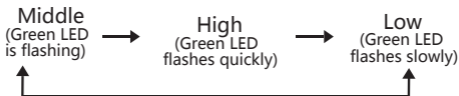
1. Press SHARE. Hold for 3 seconds until the green LED is on.
2. Press LEFT of the D-PAD. The green LED is off. Pedals are programmed as Y function.

### **Program L-Wing and R-Wing as Y axis**

1. Press SHARE. Hold for 3 seconds until the green LED is on.
2. Press RIGHT of the D-PAD. The green LED is off. Pedals are programmed as Y function.

### **3 levels wheel sensitivity adjustment**

1. Press SHARE + OPTIONS at the same time. Hold for 3 seconds until green LED is on. Release the button.
2. Press SHARE again. Current sensitivity is displayed
3. Press SHARE a third time to select sensitivity level. It cycles as below:



4. Press UP of the D-PAD to confirm and quit.



## ● For use with PS3/SWITCH

1. Plug the USB of racing wheel into the PS3/ SWITCH USB interface, power on the console.
2. After connection, the console will allocate a channel to Racing wheel and the compared indicator light on. You can start to play game or set functions of console.

## ● For use with PS4

1. Use USB cable to connect original PS4 controller to racing wheel' s USB port (Power OFF the controller).
2. Plug the USB of Racing wheel into PS4 USB interface.



3. Press "HOME" Button on Racing wheel. When racing wheel can control the console interface which mean connected successfully.

## ● For use with XBOX ONE

1. Use USB cable to connect original XBOX ONE controller to racing wheel' s USB port (Power OFF the controller).
2. Plug the USB of Racing wheel into XBOX ONE USB interface.



3. After connection, Press "HOME" Button on Racing wheel. When racing wheel can control the console interface which mean connected successfully.

## ● Attentions

1. Avoid fierce vibration. Don't take apart, revise and mend by yourself.
2. Don't let water or other liquid entering inside of the gamepad to make any damages.
3. Don't store in places of high humidity, temperature, heavy oil or smoke.
4. Don't drop the gamepad into fire or explosion danger may be caused by built-in battery.
5. Children should be under the custody of adults to use this product.

## ● Specifications

Product Mode	RACING WHEEL
Mode No.	PXN-V3 PRO
Connection	USB wired , 2m wire
Power Supply	DC 5V
Current	Normal <10mA,vibration <170mA
Packing Size	Appr. 350x325x270MM
Product Size	Appr. 260x320x245MM
Net Weight	Appr. 2360g
Working Temperature	10-40°C
Application Humidity	20~80%