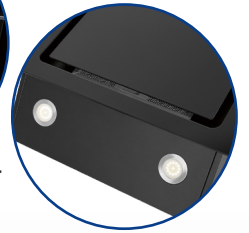
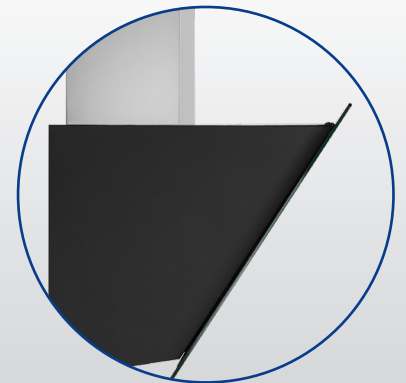


Aluminum grease filter



LED light



LED light



Exhaust air flow
Maximal 603 m³/h



Energy efficient

Diagonal chimney hood DU 771.1 G

Specification

- 60 cm Wall chimney, stainless-steel
- Rim ventilation technology
- Recirculation- or exhaust operation
- Max. exhaust air flow rate: 603 m³/h
- Operation via push buttons
- Touch control, LED display
- 3 Power levels incl. booster function
- LED light (2 x 1.5 W warm white), separate switchable
- 1 Pc 5-layer aluminum grease filter (dishwasher resistant)
- Air outlet: Ø 150 mm
- Telescope shaft made of stainless-steel, two-part
- Incl. flexible exhaust hose and mounting material
- Shaft height: 40.0 cm - max. 78.0 cm
- Shaft width/-length: 22.2 cm / 17.2 cm

Recirculation operating via additional carbon filter KF 561, Art.-No. 256 100

Color: white/stainless-steel
Article no.: 771 120
Article EAN-Code: 4 004 470 777 123
Color: black/stainless-steel
Article no.: 771 110
Article EAN-Code: 4 004 470 777 116

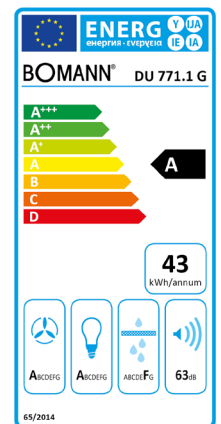
20"/40"/HQ Container: --- / --- / 504

Technical Data

Connection voltage: 220-240 V~ / 50 Hz
Connection power: 233 W
Noise level: 63 dB

Consumption Data

Energy consumption / year: 43 kWh
(according to EU data sheet regulation No. 65/2014)



Dimensions (approx. H x W x D) and weight
Unit: 76.0~114.0 x 60.0 x 43.0 cm; 15.0 kg
Packaging: 44.5 x 65.5 x 49.0 cm; 17.0 kg

C. Bomann GmbH
Heinrich-Horten-Straße 17
47906 Kempen