

CELIQE

HYDRO AIRSTYLER MULTSTYLER

5 in 1

Temperature control
5 attachments



<http://www.celique.com>

Let's start

1. Safety Instructions
2. In the box
3. How do you use the Multistylar?
4. Clean the Multistylar

SAFETY INSTRUCTIONS

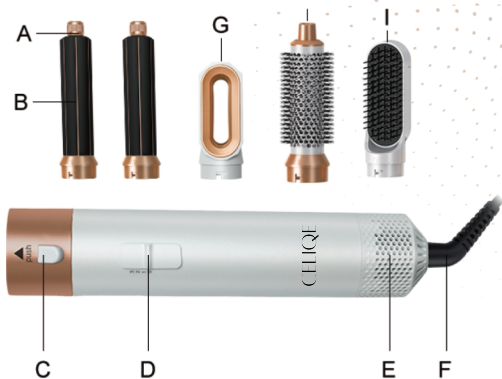
Power supply: AC110V-60HZ DAC220-240V - 50/60HZ

Power: 1000 W

Before plugging in the multistyler, make sure that the voltage corresponds to the voltage in your home.

1. If the power cord is damaged, it must be replaced by the manufacturer or a similarly qualified person in order to avoid a hazard.
2. If the hair dryer is used in a bathroom, the plug must be unplugged after use, in order to avoid risk of water.
3. For additional protection, a residual current device (RCD) must be installed with a max. of 30MA
4. Do not use this device near bathtubs, showers, washbasins or other vessels containing water.
5. Do not use the hair dryer for purposes other than those described in this manual.
6. This appliance is not for use by children under 8 years of age and persons with reduced physical, sensory or mental capabilities or lack of experience and knowledge.
7. Do not use outdoors.
8. Always unplug the hair dryer when not in use and before cleaning.
9. To protect against the risk of electric shock, do not immerse the device in water or other liquids.
10. Do not spray aerosol products when the hair dryer is in use.
11. Do not leave the hair dryer switched on when not in use.
12. Do not use attachments other than those supplied.
13. The air inlet and air outlet openings should never be blocked to avoid overheating.
14. However, if the airflow is accidentally blocked during use, the built-in thermal protection will automatically switch off the device. The hair dryer will automatically switch on again after a few minutes of cooling down.
15. Keep your hair away from the inlet opening to avoid being pulled in.
16. Store the device in a cool, dry place. Do not use it if you have water on your hands.

IN THE BOX



- A: Tip
- B: Detachable spiral curl attachment (30mm)
- C: Unlock button
- D: Power Switch / Temperature Control* (55°C-80°C-105°C)
- E: Rear filter
- F: Cable
- G: Blazer attachment
- H: Curling brush
- I: Multi-function brush

*Additional instructions for temperature level settings

- O: Off
- 1: Moderate temperature for gentle drying and styling
- 2: High temperature for quick drying and styling
- 3: Highest temperature for fast drying and styling

HOW DO YOU USE THE MULTISTYLER?

Changing the styling attachments

Place the attachment on the body of the device by aligning the guides on the two parts, then press the two together while gently turning the comb clockwise until you hear CLICK.

To remove the comb, press the release button on the sides of the device and pull off the attachment.

How to use the attachments?

The styling attachment with the spiral comb is for curling the hair.

The blowing brush is for creating beautiful side waves.

To use the roller brush, spread the hair over strands and then wind it around the roller brush. To release it afterwards, press the button above the control switch. Do not comb the hair immediately after curling, give it some time to cool.

Hair drying:

- Plug it into the socket
- Switch on the device
- Set the temperature level
- If necessary, you can interrupt the hot air supply during drying by turning the switch to the 1st position (cold air position)

After using the Multistylers:

- Switch off the device at the power switch.
- Remove the plug from the socket when you are not using the appliance.
- Let the device cool down and store it in a dry place.
- Never wrap the cord around the appliance as this will quickly wear and break the cord. If the cord of this appliance is damaged, the appliance must be replaced by returning it to the retailer where the product was purchased or a qualified person to avoid a hazard.
- Check the power cord and accessories regularly for visible damage.



Cleaning

1. The device can be cleaned with a dry cloth.
2. The attachments can be cleaned with a damp cloth or under the crane. Remove the attachments from the appliance before cleaning it. Make sure the attachments are dry before using or storing them.
3. Never rinse the device with water.