



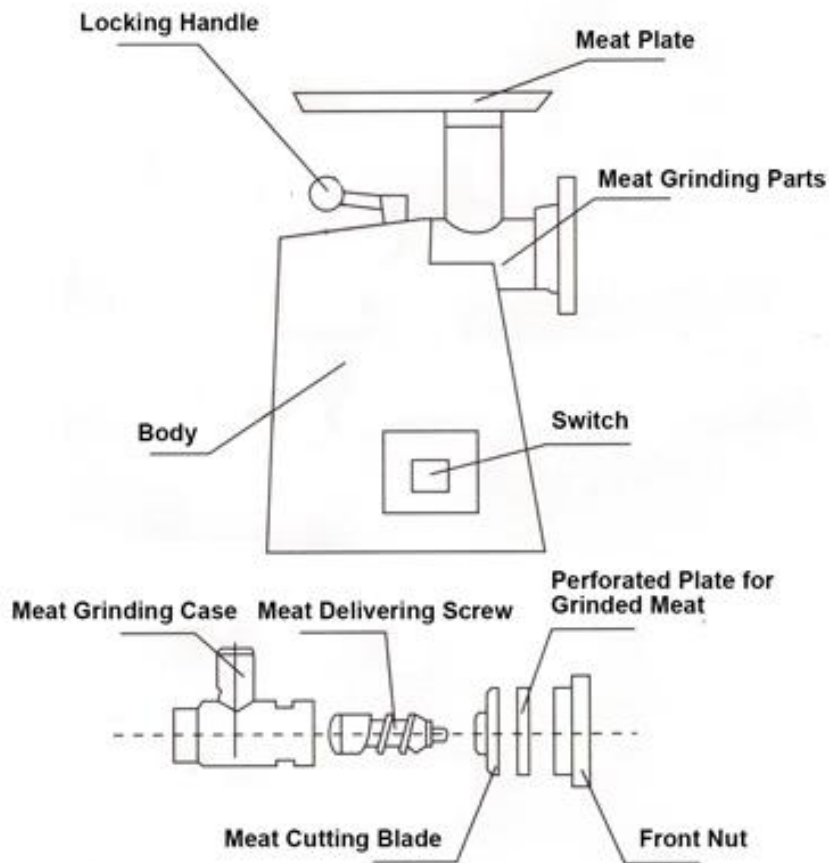
This is the original instruction, please read all manual instructions carefully before operating. VEVOR reserves clear interpretation of our user manual. The appearance of the product shall be subject to the product you received. Please forgive us that we won't inform you again if there is any technology or software updates on our product.

Manufacturer: Zhenjiang xinqu Jin Wang food machinery Co., Ltd.

Address: Zhenjiang xinqu Ding Gang vibration hillock professional 48.

Meat Grinder Operation Instructions

- Machine Construction



- Technical Parameters

Model	12
Production capacity	120-150KG/H
Power	0.85KW
Voltage	110V
Overall Dimension	420X300X440mm
Weight	17KG

• Operation and Maintenance

1. Check and ensure the power supply voltage is consistent with the nameplate of the machine before use, and require a reliable connection to the ground line. For a single-phase motor, the voltage fluctuation of the power supply must not be more than 10% of the rated voltage, unless equip the machine with a manostat while using. If a three-phase motor is used, the head of the meat grinder should be removed first to get the electric test for correcting the turning direction (the same direction as the arrow) before use.
2. Disassemble and clean every parts of meat grinder head before use, then reassemble them and pull the locking handle. Notice that the front nut need not be screwed too tightly.
3. The meat to be minced need to be peeled, deboned and without ribs, which are cut into strips.
4. Turn on the motor, put the meat into the grinder after the motor working normally. If necessary, propel the meat into grinder case with the feeding rod.
5. If the meat coming out is slow or be mushy, repair the machine as follows:
 - a、 The front nut is too loose that makes the meat cutting blades and the perforated plate connected improperly, which should be proper adjusted.
 - b、 The small holes of the perforated plate are blocked and should be cleared.
 - c、 The meat cutting blades are blunt and should be sharpened or replaced.

Installati



1. Assemble the housing into the main body



2. Insert the helix into the housing



3. Put the cross blade into the helix



4. Install the well plate



5. Lock the screw nut



6. Install the tray

Our company carry out three guarantees to products (guarantee of repair, replacement and refund of substandard products.) Within half a year of the sale, our company is responsible for free maintenance of the fault machine caused by the manufacturing.

CustomerService@vevor.com

