



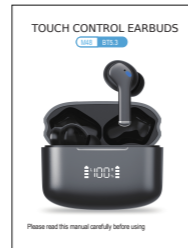
M48 EARBUDS User Manual



M48 BT5.3

Please read this manual carefully before using

Accessories



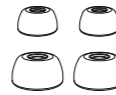
User Manual



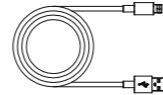
Charging case



Wireless earbuds

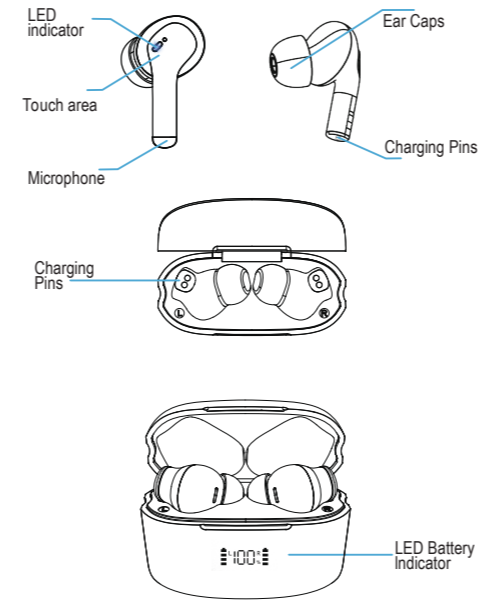


Ear caps

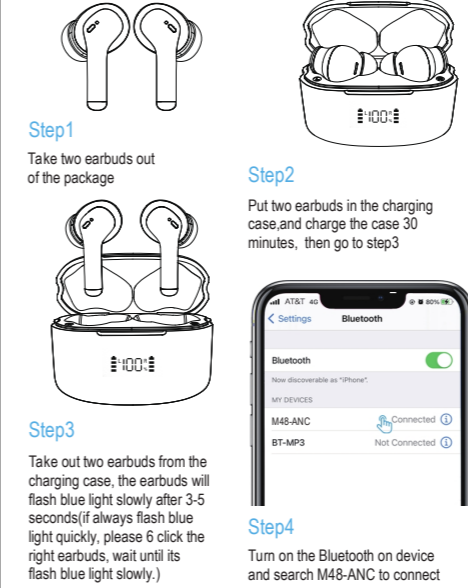


Charging cable

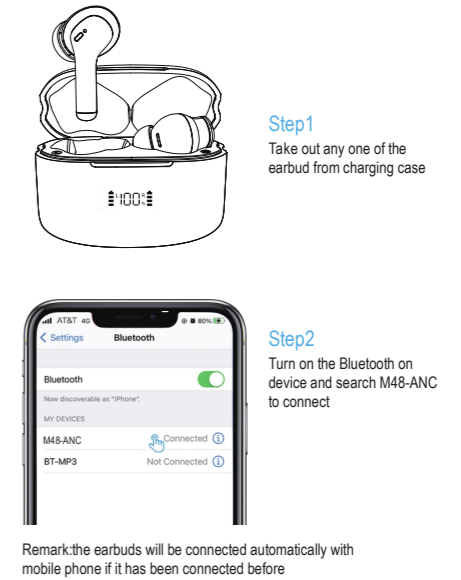
Product Details



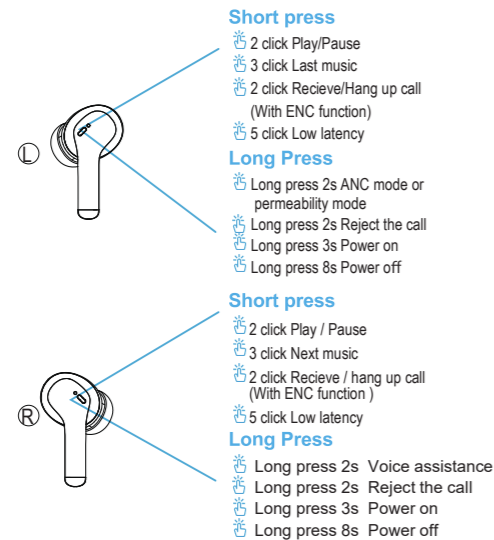
Twin Mode



Single Mode

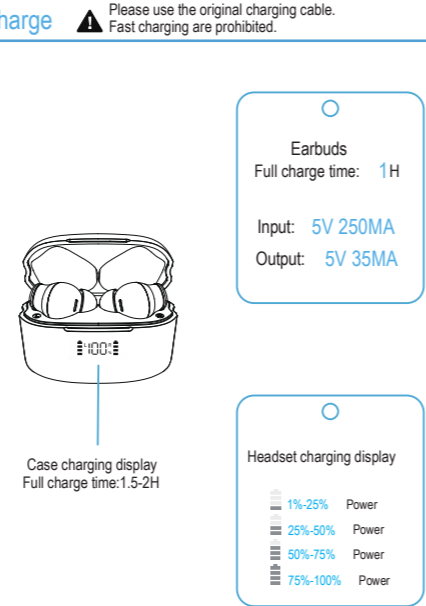


Functions



(Remark: Android phone can switch the ANC mode and transparency mode by pressing the left earbud for 2S. Iphone can customize it by itself.)

Charge



Troubleshooting

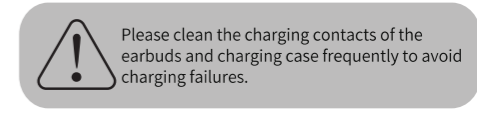
Pls resolve separately following the instructions if any one of the condition occurs.
1. Left & Right earbud can't be paired successfully with each other
2. Only one earbud can work
3. Earbuds can not be connected with phone

Troubleshooting

2) If the earbuds has been connected by the mobile phone before, then just need to find the bluetooth name in the bluetooth list, and connected.
3) Delete the bluetooth list record on mobile phone, then search M48-ANC to connect.
4. Earbuds charging case do not display the earbuds charging indicator progress bar.

Specification

Earbuds:
Bluetooth version: JL 5.3
Distance: 10M
Battery: 35mAh
Full charge time: 1 hours
Play time: 3-4hours
Weight: 8g



© QUCHIQ Copyright 2023 all rights reserved
Made in China

