

# ICUBS232SM3

## Instruction Manual

# USB Serial Adapter

**1-Port 3ft USB to RS232 DB9  
Serial Adapter Cable**

**StarTech.com**

Hard-to-find made easy

# **FCC Compliance Statement**

This equipment has been tested and found to comply with the limits for a Class B digital device, pursuant to part 15 of the FCC Rules. These limits are designed to provide reasonable protection against harmful interference in a residential installation. This equipment generates, uses and can radiate radio frequency energy and, if not installed and used in accordance with the instructions, may cause harmful interference to radio communications. However, there is no guarantee that interference will not occur in a particular installation. If this equipment does cause harmful interference to radio or television reception, which can be determined by turning the equipment off and on, the user is encouraged to try to correct the interference by one or more of the following measures:

- Reorient or relocate the receiving antenna.
- Increase the separation between the equipment and receiver.
- Connect the equipment into an outlet on a circuit different from that to which the receiver is connected.
- Consult the dealer or an experienced radio/TV technician for help.

## **Use of Trademarks, Registered Trademarks, and other Protected Names and Symbols**

This manual may make reference to trademarks, registered trademarks, and other protected names and/or symbols of third-party companies not related in any way to StarTech.com. Where they occur these references are for illustrative purposes only and do not represent an endorsement of a product or service by StarTech.com, or an endorsement of the product(s) to which this manual applies by the third-party company in question. Regardless of any direct acknowledgement elsewhere in the body of this document, StarTech.com hereby acknowledges that all trademarks, registered trademarks, service marks, and other protected names and/or symbols contained in this manual and related documents are the property of their respective holders.

# Table of Contents

- Introduction ..... 1**
  - Packaging Contents ..... 1
  - System Requirements ..... 1
- Installation ..... 1**
  - Verifying Installation ..... 2
- Specifications ..... 3**
- Technical Support ..... 4**
- Warranty Information ..... 4**

## Introduction

The ICUSB232SM3 3ft USB to RS232 DB9 Serial Adapter Cable - M/M lets you connect DB9 RS232 serial devices to your Mac or PC laptop or desktop computer through an available USB port, as though the computer offered an onboard DB9M connector.

Unlike typical USB to serial converter cables where the conversion takes place at the DB9 end of the cable, the StarTech.com ICUSB232SM3 features a converter chip on the USB end. Converting at the USB source overcomes the 15ft. technical limit of USB cables, allowing for a much greater serial DB9 extension cable (50ft.+ is possible depending on the application), should it be necessary for a given setup.

Simple to install and use, this USB to Serial adapter provides a cost-effective solution that bridges the compatibility gap between modern computers and legacy serial peripherals.

## Packaging Contents

- 1 x USB to Serial Adapter Cable
- 1 x Driver Mini-CD
- 2 x Cable Nut
- 1 x Instruction Manual

## System Requirements

- USB enabled computer system with available USB port
- Microsoft® Windows® 98SE/ME/2000/XP/Server 2003/Vista/Server 2008 R2/7 (32/64-bit), or Apple® Mac OS® X, or Linux®



\*actual product may vary from photos

## Installation

### Windows 2000/XP/Server 2003

1. Upon starting Windows, if the “Found New Hardware” wizard appears on the screen, cancel/close the window and insert the included Driver CD into the computer’s CD/DVD drive.

2. AutoPlay should automatically launch and display all of the folders on the CD. If not, open “My Computer” and double-click on the CD/DVD drive.
3. Enter the folder “USB Serial Adapter”, then “Windows Drivers” and double-click the Driver Installer file.
4. This should launch the driver Installation wizard. Continue through the wizard and once complete, all the necessary drivers will be installed.
5. Connect the USB to Serial adapter to a USB port and Windows should automatically install the drivers. Once complete, the serial port should be ready for use.

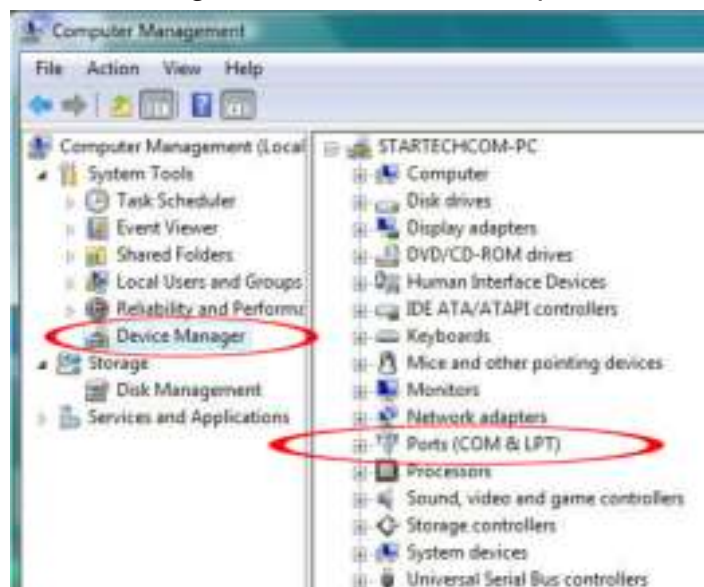
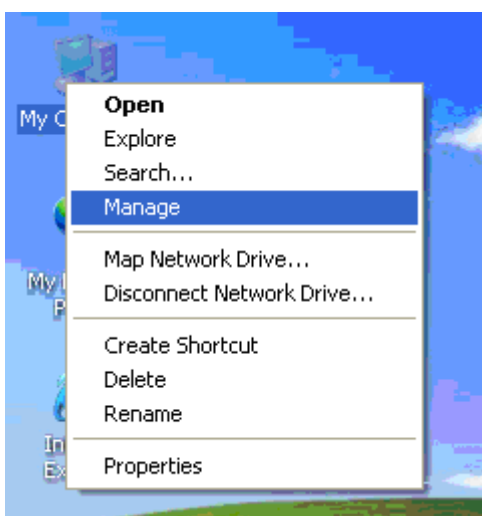
### Windows Vista/7/Server 2008 R2

1. Upon starting Windows, if the “Found New Hardware” wizard appears on the screen, cancel/close the window or choose not to install the drivers and insert the included Driver CD into the computer’s CD/DVD drive.
2. AutoPlay should automatically launch and display the option to browse the contents of the CD. If not, open “Computer” and double-click on the CD/DVD.
3. Enter the folder “USB Serial Adapter”, then “PL-2303HX-X\_Vista” and double-click the Driver Installer file.
4. This should launch the driver Installation wizard. Continue through the wizard and once complete, all the necessary drivers will be installed.
5. Connect the USB to Serial adapter to a USB port and Windows should automatically install the drivers. Once complete, the serial port should be ready for use.

## Verifying Installation

### Windows 2000/XP/Server 2003/Vista/Server 2008 R2/7

From the main desktop, right-click on “My Computer” (“Computer” in Vista/7), then select Manage. In the new Computer Management window, select Device Manager from the left window panel.



Double-click on the “Ports (COM & LPT)” option. An additional COM port should be listed.

# Specifications

<b>Host Interface</b>	USB 1.1
<b>Chipset ID</b>	Prolific PL2303
<b>External Connectors</b>	1 x DB9 male 1 x USB type A male
<b>LEDs</b>	None
<b>Supported Protocols</b>	RS232
<b>Maximum Data Transfer Rate</b>	1 Mbps
<b>Buffer Size</b>	96 Byte Tx/Rx
<b>Operating Temperature</b>	-20°C ~ 80°C (-4°F ~ 176°F)
<b>Storage Temperature</b>	-20°C ~ 80°C (-4°F ~ 176°F)
<b>Humidity</b>	0% ~ 65% RH
<b>Cable Length</b>	915mm / 36in
<b>Weight</b>	42g
<b>Compatible Operating Systems</b>	Windows 98SE/ME/2000/XP/Server 2003/Vista/ Server 2008 R2/7 (32/64-bit), Mac OS X, Linux

## Technical Support

StarTech.com's lifetime technical support is an integral part of our commitment to provide industry-leading solutions. If you ever need help with your product, visit [www.startech.com/support](http://www.startech.com/support) and access our comprehensive selection of online tools, documentation, and downloads.

## Warranty Information

This product is backed by a lifetime warranty.

In addition, StarTech.com warrants its products against defects in materials and workmanship for the periods noted, following the initial date of purchase. During this period, the products may be returned for repair, or replacement with equivalent products at our discretion. The warranty covers parts and labor costs only. StarTech.com does not warrant its products from defects or damages arising from misuse, abuse, alteration, or normal wear and tear.

### Limitation of Liability

In no event shall the liability of StarTech.com Ltd. and StarTech.com USA LLP (or their officers, directors, employees or agents) for any damages (whether direct or indirect, special, punitive, incidental, consequential, or otherwise), loss of profits, loss of business, or any pecuniary loss, arising out of or related to the use of the product exceed the actual price paid for the product. Some states do not allow the exclusion or limitation of incidental or consequential damages. If such laws apply, the limitations or exclusions contained in this statement may not apply to you.

# StarTech.com

Hard-to-find **made easy**

StarTech.com has been making “hard-to-find easy” since 1985, providing high quality solutions to a diverse IT and A/V customer base that spans many channels, including government, education and industrial facilities to name just a few. We offer an unmatched selection of computer parts, cables, A/V products, KVM and Server Management solutions, serving a worldwide market through our locations in the United States, Canada, the United Kingdom and Taiwan.

Visit **[www.startech.com](http://www.startech.com)** today for complete information about all our products and to access exclusive interactive tools such as the Cable Finder, Parts Finder and the KVM Reference Guide.