

**USB 3.0 to HDMI 4K Graphics
CSV-2302H**



Installing the Driver

NOTE: DO NOT connect the adapter to the computer before completing the driver installation.

* The actual strings of the driver may vary slightly on each operating system, and the driver version is subject to change without notice.

Windows® 7 / Windows® 8 / Windows® 8.1

1. Insert the provided CD into your disc drive.
2. Click Run Setup.exe to execute the installer program.
3. Click I Accept to accept the license agreement.
4. Wait for the program to install the driver.
5. Click Finish to complete the installation if asked.

NOTE:

If the AutoPlay does not appear automatically, locate and double-click on the Setup.exe file in the driver folder to launch the setup.

Enter the administrator password and then click Yes to start the installation if a User Account Control dialog box appears.

Connecting the Adapter

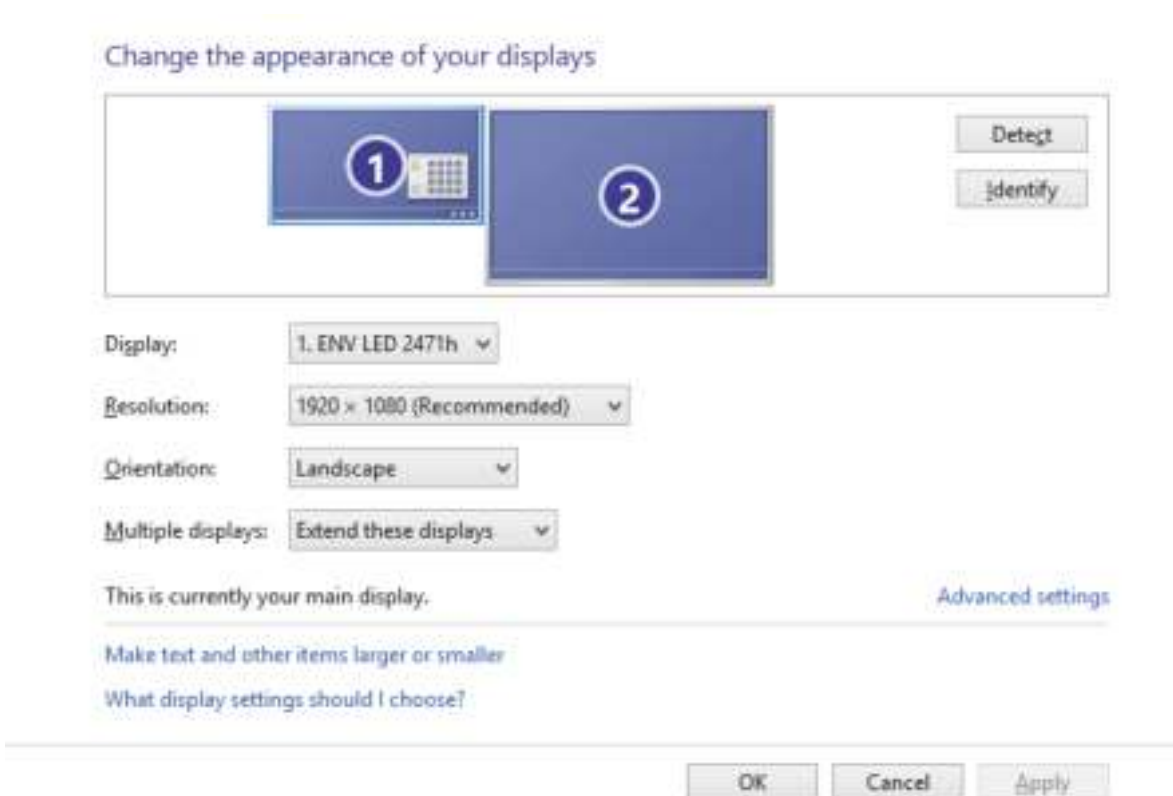
Make sure the device (Desktop, Laptop...) is HDMI™ embedded or bundled any adapter/connector with HDMI™.

Connect the adapter to your monitor or computer after driver installation is completed.

Changing the Display Mode

An extra HDMI™ monitor can be connected through the adapter directly. Once the extra monitor is connected, it can be configured to use either “mirror mode”, “extended mode” or set to be the primary display.

Position the mouse anywhere on the Windows Desktop, Right-click and select Screen Resolution.



Alternatively, click the utility icon in the Windows System Tray, and then select DisplayLink Manager or Video Setup.

- Incorporates HDMI™ technology.

The Quick Installation Guide describes only the basic instructions on installation. For more information, please refer to the User’s Manual on the provided CD.

