



Hewlett Packard
Enterprise

HPE Comware-Based Devices Transceiver Modules

User Guide (1G)

© Copyright 2017, 2019 Hewlett Packard Enterprise Development LP

The information contained herein is subject to change without notice. The only warranties for Hewlett Packard Enterprise products and services are set forth in the express warranty statements accompanying such products and services. Nothing herein should be construed as constituting an additional warranty. Hewlett Packard Enterprise shall not be liable for technical or editorial errors or omissions contained herein.

Confidential computer software. Valid license from Hewlett Packard Enterprise required for possession, use, or copying. Consistent with FAR 12.211 and 12.212, Commercial Computer Software, Computer Software Documentation, and Technical Data for Commercial Items are licensed to the U.S. Government under vendor's standard commercial license.

Links to third-party websites take you outside the Hewlett Packard Enterprise website. Hewlett Packard Enterprise has no control over and is not responsible for information outside the Hewlett Packard Enterprise website.

Acknowledgments

Intel®, Itanium®, Pentium®, Intel Inside®, and the Intel Inside logo are trademarks of Intel Corporation in the United States and other countries.

Microsoft® and Windows® are either registered trademarks or trademarks of Microsoft Corporation in the United States and/or other countries.

Adobe® and Acrobat® are trademarks of Adobe Systems Incorporated.

Java and Oracle are registered trademarks of Oracle and/or its affiliates.

UNIX® is a registered trademark of The Open Group.

Contents

Overview	1
List of Gigabit transceiver modules and network cables	1
About optical transceiver modules	1
Data rate	1
Transmission distance	2
Central wavelength	2
Fiber	2
LC connector	3
Optical parameters	4
About copper transceiver modules	4
Transmission distance	4
Connector	4
SFP transceiver modules	5
2.5-Gigabit SFP optical transceiver modules	5
Models and specifications	5
Gigabit SFP optical transceiver modules	5
Models and specifications	6
100-Megabit SFP optical transceiver modules	7
Models and specifications	7
Gigabit BIDI optical transceiver modules	8
Models and specifications	8
100-Megabit BIDI optical transceiver module	8
Models and specifications	9
Gigabit CWDM optical transceiver modules	9
Models and specifications	10
Gigabit SFP copper transceiver modules	11
Models and specifications	11
Gigabit SFP copper cables	11
Models and specifications	11
Gigabit Ethernet transceiver modules compatibility matrix	12
Gigabit Ethernet transceiver modules	12
Data center switching minimum software release requirements	14
HPE FlexFabric 12900 switch series minimum software version requirements	14
HPE FlexFabric 12900E switch series minimum software version requirements	17
HPE FlexFabric 11900 switch series minimum software version requirements	18
HPE FlexFabric 10500 switch series minimum software version requirements	19
HPE FlexFabric 7900 switch series minimum software version requirements	26
HPE FlexFabric 7500 switch series minimum software version requirements	27
HPE 6127XLG Blade switch series minimum software version requirements	35
HPE 6125XLG Blade switch series minimum software version requirements	35
HPE FlexFabric 5980 switch series minimum software version requirements	36
HPE FlexFabric 5950 switch series minimum software version requirements	36
HPE FlexFabric 5945 switch series minimum software version requirements	37
HPE FlexFabric 5940 switch series minimum software version requirements	37
HPE FlexFabric 5930 switch series minimum software version requirements	38
HPE FlexFabric 5900 switch series minimum software version requirements	39
HPE FlexFabric 5830 switch series minimum software version requirements	40
HPE FlexFabric 5710 switch series minimum software version requirements	41
HPE FlexFabric 5700 switch series minimum software version requirements	42
Document conventions and icons	43
Conventions	43
Network topology icons	44

Support and other resources	45
Accessing Hewlett Packard Enterprise Support	45
Accessing updates	45
Websites	46
Customer self repair	46
Remote support	46
Documentation feedback	47
Index	48

Overview

This document describes Gigabit transceiver modules and cables available for HPE Comware-based devices.

List of Gigabit transceiver modules and network cables

Transceiver module type	Connector type
SFP transceiver modules	
2.5-Gigabit SFP optical transceiver module	LC
Gigabit SFP optical transceiver module	
622-Megabit SFP optical transceiver module	
100-Megabit SFP optical transceiver module	
Gigabit bi-direction (BIDI) optical transceiver module	
100-Megabit BIDI optical transceiver module	
Gigabit coarse wavelength division multiplexing (CWDM) optical transceiver module	
Gigabit SFP copper transceiver module	RJ-45
Gigabit SFP copper cable (for interconnecting devices)	N/A

NOTE:

- HPE Gigabit transceiver modules and cables are subject to change over time. For the most recent list of HPE Gigabit transceiver modules and cables, contact HPE technical support or marketing staff.
- The available transceiver modules and cables vary by HPE devices. For the transceiver modules and cables available for a device, see the installation guide for the device.

About optical transceiver modules

Optical transceiver modules (also called fiber transceiver modules) transmit signals over optical fibers and are suitable for long distance transmission.

The following information explains the major specifications of a fiber transceiver module.

Data rate

Data rate is the number of bits transmitted per second. Data rate is typically measured in Megabits per second (Mbps) or Gigabits per second (Gbps).

Transmission distance

The transmission distance of optical transceiver modules is divided into short and long-range types. Typically, a distance of 2 km (1.24 miles) or below is short-range type and a distance of 10 km (6.21 miles) is long-range type.

Transmission distances supported by optical transceiver modules are mainly limited by signal attenuation and dispersion suffered during the transmission of fiber signals over fibers.

- Signal attenuation occurs because of absorption, dispersion, and leakage over the media as light travels through optical fibers. This attenuation increases in direct ratio to transmission distance.
- Dispersion occurs because a fiber transmits light with different wavelengths at different speeds. Light with different wavelengths reaches the receiving end at different time. This results in spread and blurred pulses.

Central wavelength

Central wavelength represents the wave band used for optical signal transmission. The following central wavelengths (wave bands) are available for common optical transceiver modules: 850 nm, 1310 nm, and 1550 nm.

- The 850 nm wave band is used for short-reach transmission.
- The 1310 nm and 1550 nm wave bands are used for middle-reach and long-haul transmissions.

Fiber

Fiber types

Fibers are classified into multimode fibers and single-mode fibers.

- Multimode fibers

Multimode fibers (MMFs) have thicker fiber cores than single-mode fibers and can transport light in multiple modes. However, the intermodal dispersion is greater and worsens as the transmission distance increases.

Multimode fibers can be classified into multiple grades according to their diameters and modal bandwidth, as shown in [Table 1](#). The modal bandwidth is a comprehensive index that reflects the optical characteristics of a multimode fiber. The modal bandwidth of a multimode fiber is equal to *the modulation frequency of the maximum modulation frequency pulse that can pass a fiber × the fiber length*.

International Telecommunication Union (ITU) defines multimode fiber types in its G series standards. The most commonly used multimode fiber is defined in the ITU G.651 standard. The G.651-compliant fiber transmits light in the wavelength range of 800 nm to 900 nm or 1200 nm to 1350 nm.

Table 1 Multimode fiber grades

Fiber grade	Fiber diameter (µm)	Modal bandwidth at 850 nm (MHz*km)
OM1	62.5/125	200
OM2	50/125	500
OM3	50/125	2000
OM4	50/125	4700

- Single-mode fibers

Single-mode fibers (SMFs) have a small core size (typically 9 μm or 10 μm) and can transmit light in only one mode. Single-mode fibers suffer little intermodal dispersion and are suitable for long-haul communication. Single-mode fibers transmit light at the central wavelength of 1310 nm or 1550 nm.

Telecommunication Industries Alliance (TIA)/Electronic Industries Alliance (EIA) defines that single-mode fibers use yellow outer jackets with an "SM" mark.

ITU defines single-mode fiber types in its G series standards. The most commonly used single-mode fibers are defined in ITU G.652 and G.655 standards. Table 2 describes features of the G.652 and G.655-compliant fibers.

Table 2 Features of G.652 and G.655-compliant fibers

Single-mode fiber type	Wavelength (nm)	Features	Applications
G.652-compliant fiber (standard single-mode fiber)	<ul style="list-style-type: none"> • 1260 to 1360 • 1530 to 1565 	Zero dispersion at 1310 nm.	Connecting transceiver modules with a central wavelength of 1310 nm or 1550 nm.
G.655-compliant fiber (non-zero dispersion shifted fiber)	1530 to 1565	Near-zero dispersion around 1550 nm.	1550-nm wavelength-division multiplexing (WDM) transmissions.

Fiber diameter

Fiber diameter is expressed as core diameter/cladding diameter, in μm. For example, 9/125 μm represents a fiber core diameter of 9 μm and a fiber cladding diameter of 125 μm.

As a best practice, use the following fiber diameters for the HPE Comware-based devices:

- **G.652 standard single-mode fiber**—9/125 μm.
- **G.655 single-mode fiber**—9/125 μm.
- **G.651 standard multimode fiber**—50/125 μm or 62.5/125 μm.

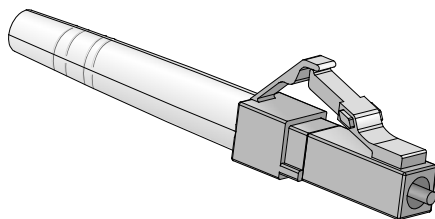
LC connector

△ CAUTION:

Cover the connector with a dust cap when it is not connected to optical fibers.

Connectors connect transceiver modules to the transmission media.

Figure 1 LC connector



Optical parameters

The following are the major optical parameters:

- **Transmit power**—Transmit power is the power at which the transmitter of an optical transceiver module transmits optical signals, in dBm.
- **Receive power**—Receive power is the power at which the receiver of a optical transceiver module receives optical signals, in dBm.

The transceiver module specifications in this guide provide the average transmit and receive power ranges.

About copper transceiver modules

Copper transceiver modules transmit signals over Category-5 unshielded twisted pair (UTP). UTP transmission cover shorter distances than fiber transmission and is typically used in small-sized networks only.

Transmission distance

Signals can be transmitted over UTP cable for a maximum of 100 m (328.08 ft.). Because of this limitation, copper transceiver modules are used only for short-reach transmission.

Connector

Registered Jack-45 (RJ-45) twisted pair connectors are used as connectors for copper transceiver modules.

Figure 2 RJ-45 connector

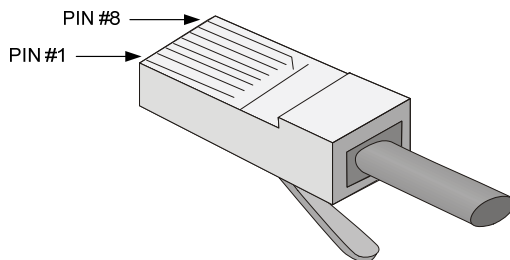


Table 3 RJ-45 GE connector pin assignment

Pin	Signal	Function
1	MX_0+	Data transmit/receive
2	MX_0-	Data transmit/receive
3	MX_1+	Data transmit/receive
4	MX_2+	Data transmit/receive
5	MX_2-	Data transmit/receive
6	MX_1-	Data transmit/receive
7	MX_3+	Data transmit/receive
8	MX_3-	Data transmit/receive

SFP transceiver modules

2.5-Gigabit SFP optical transceiver modules

Figure 3 2.5-Gigabit/Gigabit/622-Megabit/100-Megabit SFP optical transceiver module



Models and specifications

2.5-Gigabit SFP optical transceiver modules use LC connectors.

Table 4 Specifications for 2.5-Gigabit SFP optical transceiver modules (1)

Product code	HPE description	Central wavelength (nm)	Fiber mode	Fiber diameter (μm)	Transmission distance
JD084A	HPE X160 2.5G SFP LC 2km Transceiver	1310	SMF	9/125	2 km (1.24 miles)
JD085A	HPE X160 2.5G SFP LC 15km Transceiver	1310	SMF	9/125	15 km (9.32 miles)
JD086A	HPE X160 2.5G SFP LC 40km Transceiver	1310	SMF	9/125	40 km (24.86 miles)
JD087A (end of sale)	HPE X160 2.5G SFP LC 80km Transceiver	1550	SMF	9/125	80 km (49.71 miles)

Table 5 Specifications for 2.5-Gigabit SFP optical transceiver modules (2)

Product code	HPE description	Optical parameters (dBm)	
		Transmit power	Receive power
JD084A	HPE X160 2.5G SFP LC 2km Transceiver	-10 to -3	-18 to -3
JD085A	HPE X160 2.5G SFP LC 15km Transceiver	-5 to 0	-18 to 0
JD086A	HPE X160 2.5G SFP LC 40km Transceiver	-2 to +3	-27 to -9
JD087A	HPE X160 2.5G SFP LC 80km Transceiver	-20 to -14	-31 to -12

Gigabit SFP optical transceiver modules

See [Figure 3](#) for a view of the Gigabit SFP optical transceiver module.

Models and specifications

Gigabit SFP optical transceiver modules provide a transmission rate of 1250 Mbps and use LC connectors.

Table 6 Specifications for Gigabit SFP optical transceiver modules (1)

Product code	HPE description	Central wavelength (nm)	Fiber mode	Fiber diameter (µm)	Modal bandwidth (MHz*km)	Transmission distance
JD118B (end of sale)	HPE X120 1G SFP LC SX Transceiver	850	MMF	50/125	500	550 m (1804.46 ft)
					400	500 m (1640.42 ft)
				62.5/125	200	275 m (902.23 ft)
					160	220 m (721.78 ft)
JD119B (end of sale)	HPE X120 1G SFP LC LX Transceiver	1310	SMF	9/125	N/A	10 km (6.21 miles)
			MMF	50/125	500 or 400	550 m (1804.46 ft)
			MMF	62.5/125	500	550 m (1804.46 ft)
JD061A (end of sale)	HPE X125 1G SFP LC LH40 1310nm Transceiver	1310	SMF	9/125	N/A	40 km (24.86 miles)
JD062A (end of sale)	HPE X120 1G SFP LC LH40 1550nm Transceiver	1550	SMF	9/125	N/A	40 km (24.86 miles)
JD063B (end of sale)	HPE X125 1G SFP LC LH80 Transceiver	1550	SMF	9/125	N/A	80 km (49.71 miles)
JD103A	HPE X120 1G SFP LC LH100 Transceiver	1550	SMF	9/125	N/A	100 km (62.14 miles)

Table 7 Specifications for Gigabit SFP optical transceiver modules (2)

Product code	HPE description	Optical parameters (dBm)	
		Transmit power	Receive power
JD118B	HPE X120 1G SFP LC SX Transceiver	-9.5 to 0	-17 to -3
JD119B	HPE X120 1G SFP LC LX Transceiver	-9.5 to -3	-20 to -3
JD061A	HPE X125 1G SFP LC LH40 1310nm Transceiver	-5 to +5	-22 to -3
JD062A	HPE X120 1G SFP LC LH40 1550nm Transceiver	-4 to +1	-21 to -3

Product code	HPE description	Optical parameters (dBm)	
		Transmit power	Receive power
JD063B	HPE X125 1G SFP LC LH80 Transceiver	-4 to +5	-22 to -3
JD103A	HPE X120 1G SFP LC LH100 Transceiver	0 to +5	-30 to -9

NOTE:

The transmission distance of the HPE X125 1G SFP LC LH80 Transceiver (JD063B) might be displayed as 70 km (43.50 miles) on HPE devices with old software versions. Devices with upgraded software versions can correctly display the distance. The actual transmission distance is 80 km (49.71 miles).

100-Megabit SFP optical transceiver modules

See [Figure 3](#) for a view of the 100-Megabit SFP optical transceiver module.

Models and specifications

100-Megabit SFP optical transceiver modules use LC connectors.

Table 8 Specifications for 100-Megabit SFP optical transceiver modules (1)

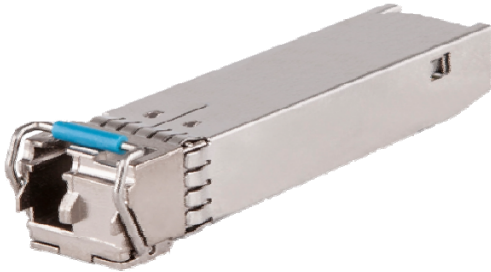
Product code	HPE description	Central wavelength (nm)	Data rate (Mbps)	Fiber mode	Fiber diameter (µm)	Transmission distance
JD102B (end of sale)	HPE X115 100M SFP LC FX Transceiver	1310	155	MMF	50/125 62.5/125	2 km (1.24 miles)
JD120B	HPE X110 100M SFP LC LX Transceiver	1310	155	SMF	9/125	15 km (9.32 miles)
JD090A (end of sale)	HPE X110 100M SFP LC LH40 Transceiver	1310	155	SMF	9/125	40 km (24.86 miles)
JD091A (end of sale)	HPE X110 100M SFP LC LH80 Transceiver	1550	155	SMF	9/125	80 km (49.71 miles)

Table 9 Specifications for 100-Megabit SFP optical transceiver modules (2)

Product code	HPE description	Optical parameters (dBm)	
		Transmit power	Receive power
JD102B	HPE X115 100M SFP LC FX Transceiver	-19 to -14	-30 to -14
JD120B	HPE X110 100M SFP LC LX Transceiver	-15 to -8	-28 to -7
JD090A	HPE X110 100M SFP LC LH40 Transceiver	-5 to 0	-34 to -9
JD091A	HPE X110 100M SFP LC LH80 Transceiver	-5 to 0	-34 to -10

Gigabit BIDI optical transceiver modules

Figure 4 Gigabit/100-Megabit BIDI optical transceiver module



Models and specifications

Gigabit BIDI optical transceiver modules provide a transmission rate of 1250 Mbps and use LC connectors.

Table 10 Specifications for Gigabit BIDI optical transceiver modules (1)

Product code	HPE description	Central wavelength (nm)		Fiber mode	Fiber diameter (μm)	Transmission distance
		Transmitting end (TX)	Receiving end (RX)			
JD098B	HPE X120 1G SFP LC BX 10-U Transceiver	1310	1490	SMF	9/125	10 km (6.21 miles)
JD099B	HPE X120 1G SFP LC BX 10-D Transceiver	1490	1310			

Table 11 Specifications for Gigabit BIDI transceiver modules (2)

Product code	HPE description	Optical parameters (dBm)	
		Transmit power	Receive power
JD098B	HPE X120 1G SFP LC BX 10-U Transceiver	-9 to -3	-18.7 to -3
JD099B	HPE X120 1G SFP LC BX 10-D Transceiver		

NOTE:

- BIDI optical transceiver modules use different central wavelengths in transmit and receive directions, in order to implement bidirectional transmission of fiber signals over the same fiber.
- You must use the HPE X120 1G SFP LC BX 10-U Transceiver (JD098B) and HPE X120 1G SFP LC BX 10-D Transceiver (JD099B) in pairs.

100-Megabit BIDI optical transceiver module

See Figure 4 for a view of the 100-Megabit BIDI optical transceiver module.

Models and specifications

100-Megabit BIDI optical transceiver modules provide a transmission rate of 155 Mbps and use LC connectors.

Table 12 Specifications for 100-Megabit BIDI optical transceiver modules (1)

Product code	HPE description	Central wavelength (nm)		Fiber mode	Fiber diameter (µm)	Transmission distance
		Transmitting end (TX)	Receiving end (RX)			
JD100A	HPE X110 100M SFP LC BX 10-U Transceiver	1310	1550	SMF	9/125	15 km (9.32 miles)
JD101A	HPE X110 100M SFP LC BX 10-D Transceiver	1550	1310			

Table 13 Specifications for 100-Megabit BIDI transceiver modules (2)

Product code	HPE description	Optical parameters (dBm)	
		Transmit power	Receive power
JD100A	HPE X110 100M SFP LC BX 10-U Transceiver	-15 to -8	-31 to -3
JD101A	HPE X110 100M SFP LC BX 10-D Transceiver		

NOTE:

- BIDI optical transceiver modules use different central wavelengths in transmit and receive directions to implement bidirectional transmission of fiber signals over the same fiber.
- You must use the HPE X115 100M SFP LC BX 10-U Transceiver (JD100A) and HPE X115 100M SFP LC BX 10-D Transceiver (JD101A) in pairs.

Gigabit CWDM optical transceiver modules

Figure 5 Gigabit CWDM optical transceiver module



Models and specifications

Gigabit CWDM optical transceiver modules provide a transmission rate of 1250 Mbps and use LC connectors.

Table 14 Specifications for Gigabit CWDM optical transceiver modules (1)

Product code	HPE description	Central wavelength (nm)	Fiber mode	Fiber diameter (µm)	Transmission distance
JD113A (end of sale)	HPE X170 1G SFP LC LH70 1470 Transceiver	1470	SMF	9/125	70 km (43.5 miles)
JD114A (end of sale)	HPE X170 1G SFP LC LH70 1490 Transceiver	1490			
JD115A (end of sale)	HPE X170 1G SFP LC LH70 1510 Transceiver	1510			
JD116A (end of sale)	HPE X170 1G SFP LC LH70 1530 Transceiver	1530			
JD109A (end of sale)	HPE X170 1G SFP LC LH70 1550 Transceiver	1550			
JD110A (end of sale)	HPE X170 1G SFP LC LH70 1570 Transceiver	1570			
JD111A (end of sale)	HPE X170 1G SFP LC LH70 1590 Transceiver	1590			
JD112A (end of sale)	HPE X170 1G SFP LC LH70 1610 Transceiver	1610			

Table 15 Specifications for Gigabit CWDM optical transceiver modules (2)

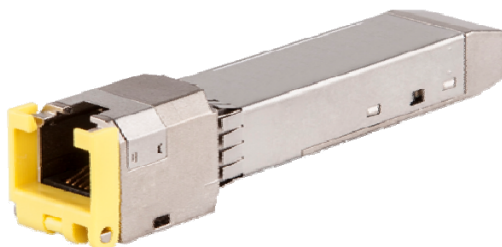
Product code	HPE description	Optical parameters (dBm)	
		Transmit power	Receive power
JD113A	HPE X170 1G SFP LC LH70 1470 Transceiver	0 to +5	-23 to -3
JD114A	HPE X170 1G SFP LC LH70 1490 Transceiver		
JD115A	HPE X170 1G SFP LC LH70 1510 Transceiver		
JD116A	HPE X170 1G SFP LC LH70 1530 Transceiver		
JD109A	HPE X170 1G SFP LC LH70 1550 Transceiver		
JD110A	HPE X170 1G SFP LC LH70 1570 Transceiver		
JD111A	HPE X170 1G SFP LC LH70 1590 Transceiver		
JD112A	HPE X170 1G SFP LC LH70 1610 Transceiver		

NOTE:

Gigabit CWDM optical transceiver modules adopt the CWDM technology that uses wavelength division multiplexers to multiplex optical signals with different wavelengths for transmission over a single optical fiber, thereby saving optical fiber resources. The receiving end uses a wavelength division demultiplexer to demultiplex the multiplexed optical signals.

Gigabit SFP copper transceiver modules

Figure 6 Gigabit SFP copper transceiver module



Models and specifications

Table 16 Specifications for SFP copper transceiver modules

Product code	HPE description	Transmission distance	Data rate	Cable type	Connector type
JD089B (end of sale)	HPE X120 1G SFP RJ45 T Transceiver	100 m (328.08 ft)	1250 Mbps	UTP/STP	RJ-45

Gigabit SFP copper cables

Figure 7 Gigabit SFP copper cable



Models and specifications

Table 17 Specifications for Gigabit SFP copper cables

Product code	HPE description	Cable length	Data rate	Cable type
JD324B	HPE 3600 Switch SFP Stacking Kit	1.5 m (4.92 ft)	1250 Mbps	UTP/STP

Gigabit Ethernet transceiver modules compatibility matrix

Gigabit Ethernet transceiver modules

Before you install, configure, or upgrade a device with HPE Gigabit Ethernet transceiver modules, always see the device's release notes for latest information. This compatibility matrix does not replace or supersede the release notes.

Table 18 Gigabit Ethernet transceiver modules

Product code	Transceiver module	Description
SFP		
JD084A	HPE X160 2.5G SFP LC 2km Transceiver	RTWM4SFP, 2.5G SFP Interface Unit, (1310nm, 2km, LC)
JD085A	HPE X160 2.5G SFP LC 15km Transceiver	RTWM5SFP, 2.5G SFP Interface Unit, (1310nm, 15km, LC)
JD086A	HPE X160 2.5G SFP LC 40km Transceiver	RTWM6SFP, 2.5G SFP Interface Unit, (1310nm, 40km, LC)
JD087A	HPE X160 2.5G SFP LC 80km Transceiver	RTWM7SFP, 2.5G SFP Interface Unit, (1550nm, 80km, LC)
JD118B	HPE X120 1G SFP LC SX Transceiver	LSRM4SFP, SFP 1000M Ethernet Optical Interface Unit, (850nm, 550m, LC)
JD119B	HPE X120 1G SFP LC LX Transceiver	LSRM5SFP, SFP 1000M Ethernet Optical Interface Unit, (1310nm, 10km, LC)
JD061A	HPE X125 1G SFP LC LH40 1310nm Transceiver	LSPM3SFP, Gigabit SFP Module (1310nm, 40km, LC)
JD062A	HPE X125 1G SFP LC LH40 1550nm Transceiver	LSPM2SFP, Gigabit SFP Module (1550nm, 40km, LC)
JD063B	HPE X125 1G SFP LC LH80 Transceiver	LSPM1SFP, Gigabit SFP Module (1550nm, 70km, LC)
JD103A	HPE X120 1G SFP LC LH100 Transceiver	LSRM9SFP, SFP 1000M Ethernet Optical Interface Unit, (1550nm, 100km, LC)
JD102B	HPE X115 100M SFP LC FX Transceiver	LSRMLSFP, SFP 100M Ethernet Optical Interface Unit, (1310nm, 2km, LC)
JD120B	HPE X110 100M SFP LC LX Transceiver	LSRMMSFP, SFP 100M Ethernet Optical Interface Unit, (1310nm, 15km, LC)
JD090A	HPE X110 100M SFP LC LH40 Transceiver	LS3M3FP1UB, Fast Ethernet Small Form-factor Pluggable Interface Unit (1310nm, 40km, LC)
JD091A	HPE X110 100M SFP LC LH80 Transceiver	LS3M3FP1UC, Fast Ethernet Small Form-factor Pluggable Interface Unit, (1550nm, 80km, LC)
JD098B	HPE X120 1G SFP LC BX 10-U Transceiver	LSPM4SFP, Gigabit SFP BIDI Module (TX1310/RX1490, 10km, LC)
JD099B	HPE X120 1G SFP LC BX 10-D Transceiver	LSPM5SFP, Gigabit SFP BIDI Module (TX1490/RX1310, 10km, LC)

Product code	Transceiver module	Description
JD100A	HPE X110 100M SFP LC BX 10-U Transceiver	LS8M8SFP,SFP 100M Ethernet BIDI Optical Interface Unit,TX1310/RX1550,15km,LC
JD101A	HPE X110 100M SFP LC BX 10-D Transceiver	LS8M9SFP,SFP 100M Ethernet BIDI Optical Interface Unit,TX1550/RX1310,15km,LC
JD113A	HPE X170 1G SFP LC LH70 1470 Transceiver	LS8MNF32TP,Gigabit Ethernet CWDM Small Form-factor Pluggable Optical Module,(1470nm,70km,LC)
JD114A	HPE X170 1G SFP LC LH70 1490 Transceiver	LS8MPF32TP,Gigabit Ethernet CWDM Small Form-factor Pluggable Optical Module,(1490nm,70km,LC)
JD115A	HPE X170 1G SFP LC LH70 1510 Transceiver	LS8MQF32TP,Gigabit Ethernet CWDM Small Form-factor Pluggable Optical Module,(1510nm,70km,LC)
JD116A	HPE X170 1G SFP LC LH70 1530 Transceiver	LS8MRF32TP,Gigabit Ethernet CWDM Small Form-factor Pluggable Optical Module,(1530nm,70km,LC)
JD109A	HPE X170 1G SFP LC LH70 1550 Transceiver	LS8MJF32TP,Gigabit Ethernet CWDM Small Form-factor Pluggable Optical Module,(1550nm,70km,LC)
JD110A	HPE X170 1G SFP LC LH70 1570 Transceiver	LS8MKF32TP,Gigabit Ethernet CWDM Small Form-factor Pluggable Optical Module,(1570nm,70km,LC)
JD111A	HPE X170 1G SFP LC LH70 1590 Transceiver	LS8MLF32TP,Gigabit Ethernet CWDM Small Form-factor Pluggable Optical Module,(1590nm,70km,LC)
JD112A	HPE X170 1G SFP LC LH70 1610 Transceiver	LS8MMF32TP,Gigabit Ethernet CWDM Small Form-factor Pluggable Optical Module,(1610nm,70km,LC)
JD089B	HPE X120 1G SFP RJ45 T Transceiver	LSPM1SFPT,Gigabit Ethernet Interface SFP Module(100m,RJ45)
JD324B	HPE 3600 Switch SFP Stacking Kit	LSJM3STK1,SFP Stacking Kit,1.5m

Data center switching minimum software release requirements

HPE FlexFabric 12900 switch series minimum software version requirements

Switch or module	Transceiver module (Product code)	Minimum software release	
		DDM support	Release version
HPE FlexFabric 12900 48-port 10GbE SFP+ EA Module (JG624A)	HPE X120 1G SFP LC SX Xcvr (JD118B)	YES	R1005P07
	HPE X120 1G SFP LC LX Xcvr (JD119B)	YES	R1005P07
	HPE X120 1G SFP LC LH100 Xcvr (JD103A)	YES	R1005P07
	HPE X120 1G SFP LC BX 10-U Xcvr (JD098B)	YES	R1005P07
	HPE X120 1G SFP LC BX 10-D Xcvr (JD099B)	YES	R1005P07
	HPE X170 1G SFP LC LH70 1470 Xcvr (JD113A)	YES	R1005P07
	HPE X170 1G SFP LC LH70 1490 Xcvr (JD114A)	YES	R1005P07
	HPE X170 1G SFP LC LH70 1510 Xcvr (JD115A)	YES	R1005P07
	HPE X170 1G SFP LC LH70 1530 Xcvr (JD116A)	YES	R1005P07
	HPE X170 1G SFP LC LH70 1550 Xcvr (JD109A)	YES	R1005P07
	HPE X170 1G SFP LC LH70 1570 Xcvr (JD110A)	YES	R1005P07
	HPE X170 1G SFP LC LH70 1590 Xcvr (JD111A)	YES	R1005P07
	HPE X170 1G SFP LC LH70 1610 Xcvr (JD112A)	YES	R1005P07
HPE FlexFabric 12900 48-port 1/10GbE SFP+ EC Module (JG626A)	HPE X120 1G SFP LC SX Xcvr (JD118B)	YES	R1005P07
	HPE X120 1G SFP LC LX Xcvr (JD119B)	YES	R1005P07
	HPE X120 1G SFP LC LH100 Xcvr (JD103A)	YES	R1005P07
	HPE X120 1G SFP LC BX 10-U Xcvr (JD098B)	YES	R1005P07
	HPE X120 1G SFP LC BX 10-D Xcvr (JD099B)	YES	R1005P07
	HPE X170 1G SFP LC LH70 1470 Xcvr (JD113A)	YES	R1005P07
	HPE X170 1G SFP LC LH70 1490 Xcvr (JD114A)	YES	R1005P07
	HPE X170 1G SFP LC LH70 1510 Xcvr (JD115A)	YES	R1005P07
	HPE X170 1G SFP LC LH70 1530 Xcvr (JD116A)	YES	R1005P07
	HPE X170 1G SFP LC LH70 1550 Xcvr (JD109A)	YES	R1005P07
	HPE X170 1G SFP LC LH70 1570 Xcvr (JD110A)	YES	R1005P07
	HPE X170 1G SFP LC LH70 1590 Xcvr (JD111A)	YES	R1005P07
	HPE X170 1G SFP LC LH70 1610 Xcvr (JD112A)	YES	R1005P07

Switch or module	Transceiver module (Product code)	Minimum software release	
		DDM support	Release version
HPE FlexFabric 12900 48-port GbE SFP EB Module (JG855A)	HPE X120 1G SFP LC SX Xcvr (JD118B)	YES	R1005P07
	HPE X120 1G SFP LC LX Xcvr (JD119B)	YES	R1005P07
	HPE X120 1G SFP LC LH100 Xcvr (JD103A)	YES	R1005P07
	HPE X120 1G SFP LC BX 10-U Xcvr (JD098B)	YES	R1005P07
	HPE X120 1G SFP LC BX 10-D Xcvr (JD099B)	YES	R1005P07
	HPE X170 1G SFP LC LH70 1470 Xcvr (JD113A)	YES	R1005P07
	HPE X170 1G SFP LC LH70 1490 Xcvr (JD114A)	YES	R1005P07
	HPE X170 1G SFP LC LH70 1510 Xcvr (JD115A)	YES	R1005P07
	HPE X170 1G SFP LC LH70 1530 Xcvr (JD116A)	YES	R1005P07
	HPE X170 1G SFP LC LH70 1550 Xcvr (JD109A)	YES	R1005P07
	HPE X170 1G SFP LC LH70 1570 Xcvr (JD110A)	YES	R1005P07
	HPE X170 1G SFP LC LH70 1590 Xcvr (JD111A)	YES	R1005P07
	HPE X170 1G SFP LC LH70 1610 Xcvr (JD112A)	YES	R1005P07
	HPE 3600 Switch SFP Stacking Kit (JD324B)	NO	R1005P07
	HPE FlexFabric 12900 48-port 1/10GbE SFP+ FX Module (JG888B)	HPE X120 1G SFP LC SX Xcvr (JD118B)	YES
HPE X120 1G SFP LC LX Xcvr (JD119B)		YES	R1109
HPE X120 1G SFP LC LH100 Xcvr (JD103A)		YES	R1109
HPE X120 1G SFP LC BX 10-U Xcvr (JD098B)		YES	R1109
HPE X120 1G SFP LC BX 10-D Xcvr (JD099B)		YES	R1109
HPE X170 1G SFP LC LH70 1470 Xcvr (JD113A)		YES	R1109
HPE X170 1G SFP LC LH70 1490 Xcvr (JD114A)		YES	R1109
HPE X170 1G SFP LC LH70 1510 Xcvr (JD115A)		YES	R1109
HPE X170 1G SFP LC LH70 1530 Xcvr (JD116A)		YES	R1109
HPE X170 1G SFP LC LH70 1550 Xcvr (JD109A)		YES	R1109
HPE X170 1G SFP LC LH70 1570 Xcvr (JD110A)		YES	R1109
HPE X170 1G SFP LC LH70 1590 Xcvr (JD111A)		YES	R1109
HPE X170 1G SFP LC LH70 1610 Xcvr (JD112A)		YES	R1109
HP FlexFabric 12900 48-port 1/10GbE SFP+ FC Module (JG888A)	HPE X120 1G SFP LC SX Xcvr (JD118B)	YES	R1109
	HPE X120 1G SFP LC LX Xcvr (JD119B)	YES	R1109
	HPE X120 1G SFP LC LH100 Xcvr (JD103A)	YES	R1109
	HPE X120 1G SFP LC BX 10-U Xcvr (JD098B)	YES	R1109
	HPE X120 1G SFP LC BX 10-D Xcvr (JD099B)	YES	R1109
	HPE X170 1G SFP LC LH70 1470 Xcvr (JD113A)	YES	R1109
	HPE X170 1G SFP LC LH70 1490 Xcvr (JD114A)	YES	R1109

Switch or module	Transceiver module (Product code)	Minimum software release	
		DDM support	Release version
	HPE X170 1G SFP LC LH70 1510 Xcvr (JD115A)	YES	R1109
	HPE X170 1G SFP LC LH70 1530 Xcvr (JD116A)	YES	R1109
	HPE X170 1G SFP LC LH70 1550 Xcvr (JD109A)	YES	R1109
	HPE X170 1G SFP LC LH70 1570 Xcvr (JD110A)	YES	R1109
	HPE X170 1G SFP LC LH70 1590 Xcvr (JD111A)	YES	R1109
	HPE X170 1G SFP LC LH70 1610 Xcvr (JD112A)	YES	R1109
HPE FlexFabric 12900 48-port 1/10GbE SFP+ FE Module (JH249A)	HPE X120 1G SFP LC SX Xcvr (JD118B)	YES	R1138P01
	HPE X120 1G SFP LC LX Xcvr (JD119B)	YES	R1138P01
	HPE X120 1G SFP LC LH100 Xcvr (JD103A)	YES	R1138P01
	HPE X120 1G SFP LC BX 10-U Xcvr (JD098B)	YES	R1138P01
	HPE X120 1G SFP LC BX 10-D Xcvr (JD099B)	YES	R1138P01
	HPE X170 1G SFP LC LH70 1470 Xcvr (JD113A)	YES	R1138P01
	HPE X170 1G SFP LC LH70 1490 Xcvr (JD114A)	YES	R1138P01
	HPE X170 1G SFP LC LH70 1510 Xcvr (JD115A)	YES	R1138P01
	HPE X170 1G SFP LC LH70 1530 Xcvr (JD116A)	YES	R1138P01
	HPE X170 1G SFP LC LH70 1550 Xcvr (JD109A)	YES	R1138P01
	HPE X170 1G SFP LC LH70 1570 Xcvr (JD110A)	YES	R1138P01
	HPE X170 1G SFP LC LH70 1590 Xcvr (JD111A)	YES	R1138P01
	HPE X170 1G SFP LC LH70 1610 Xcvr (JD112A)	YES	R1138P01
	HP FlexFabric 12900 48-port GbE SFP FX Module (JH241A)	HPE X120 1G SFP LC SX Xcvr (JD118B)	YES
HPE X120 1G SFP LC LX Xcvr (JD119B)		YES	R1138P01
HPE X120 1G SFP LC LH100 Xcvr (JD103A)		YES	R1138P01
HPE X120 1G SFP LC BX 10-U Xcvr (JD098B)		YES	R1138P01
HPE X120 1G SFP LC BX 10-D Xcvr (JD099B)		YES	R1138P01
HPE X170 1G SFP LC LH70 1470 Xcvr (JD113A)		YES	R1138P01
HPE X170 1G SFP LC LH70 1490 Xcvr (JD114A)		YES	R1138P01
HPE X170 1G SFP LC LH70 1510 Xcvr (JD115A)		YES	R1138P01
HPE X170 1G SFP LC LH70 1530 Xcvr (JD116A)		YES	R1138P01
HPE X170 1G SFP LC LH70 1550 Xcvr (JD109A)		YES	R1138P01
HPE X170 1G SFP LC LH70 1570 Xcvr (JD110A)		YES	R1138P01
HPE X170 1G SFP LC LH70 1590 Xcvr (JD111A)		YES	R1138P01
HPE X170 1G SFP LC LH70 1610 Xcvr (JD112A)		YES	R1138P01

HPE FlexFabric 12900E switch series minimum software version requirements

Switch or module	Transceiver module (Product code)	Minimum software release	
		DDM support	Release version
HPE FlexFabric 12900E 48-port 1/10GbE SFP+ 2-port 100GbE QSFP28 HB Module (JH360A)	HPE X120 1G SFP RJ45 T Xcvr (JD089B)	YES	R2609
	HPE X120 1G SFP LC SX Xcvr (JD118B)	YES	R2609
	HPE X120 1G SFP LC LX Xcvr (JD119B)	YES	R2609
	HPE X120 1G SFP LC LH100 Xcvr (JD103A)	YES	R2609
	HPE X120 1G SFP LC BX 10-U Xcvr (JD098B)	YES	R2609
	HPE X120 1G SFP LC BX 10-D Xcvr (JD099B)	YES	R2609
	HPE X170 1G SFP LC LH70 1470 Xcvr (JD113A)	YES	R2609
	HPE X170 1G SFP LC LH70 1490 Xcvr (JD114A)	YES	R2609
	HPE X170 1G SFP LC LH70 1510 Xcvr (JD115A)	YES	R2609
	HPE X170 1G SFP LC LH70 1530 Xcvr (JD116A)	YES	R2609
	HPE X170 1G SFP LC LH70 1550 Xcvr (JD109A)	YES	R2609
	HPE X170 1G SFP LC LH70 1570 Xcvr (JD110A)	YES	R2609
	HPE X170 1G SFP LC LH70 1590 Xcvr (JD111A)	YES	R2609
	HPE X170 1G SFP LC LH70 1610 Xcvr (JD112A)	YES	R2609
HPE FlexFabric 12904E v2 Main Processing Unit (JH668A)	HPE X120 1G SFP LC SX Xcvr (JD118B)	YES	R2710
	HPE X120 1G SFP LC LX Xcvr (JD119B)	YES	R2710
HP FlexFabric 12900E TAA-compliant Main Processing Unit (JH110A)	HPE X120 1G SFP LC SX Xcvr (JD118B)	YES	R2710
	HPE X120 1G SFP LC LX Xcvr (JD119B)	YES	R2710
HPE FlexFabric 12900E Main Processing Unit (JH104A)	HPE X120 1G SFP LC SX Xcvr (JD118B)	YES	R2710
	HPE X120 1G SFP LC LX Xcvr (JD119B)	YES	R2710
HPE FlexFabric 12902E Main Processing Unit (JH346A)	HPE X120 1G SFP RJ45 T Xcvr (JD089B)	YES	R2710
	HPE X120 1G SFP LC SX Xcvr (JD118B)	YES	R2710
	HPE X120 1G SFP LC LX Xcvr (JD119B)	YES	R2710
HPE FlexFabric 12900E 24p 10G/2p 40G HB 59xx Slot Module (JH953A)	HPE X120 1G SFP RJ45 T Xcvr (JD089B)	YES	R2710
	HPE X120 1G SFP LC SX Xcvr (JD118B)	YES	R2710
	HPE X120 1G SFP LC LX Xcvr (JD119B)	YES	R2710
	HPE X125 1G SFP LC LH80 Xcvr (JD063B)	YES	R2710
	HPE X120 1G SFP LC BX 10-U Xcvr (JD098B)	YES	R2710
	HPE X120 1G SFP LC BX 10-D Xcvr (JD099B)	YES	R2710

Switch or module	Transceiver module (Product code)	Minimum software release	
		DDM support	Release version
HPE FlexFabric 12900E 48-port 10GbE SFP+ HF Module (JQ061A)	HPE X120 1G SFP RJ45 T Xcvr (JD089B)	YES	R2710
	HPE X120 1G SFP LC SX Xcvr (JD118B)	YES	R2710
	HPE X120 1G SFP LC LX Xcvr (JD119B)	YES	R2710
	HPE X125 1G SFP LC LH80 Xcvr (JD063B)	YES	R2710
HPE FlexFabric 12900E 24p 10G/4p 100G HD 59xx Slot Module (JH954A)	HPE X120 1G SFP RJ45 T Xcvr (JD089B)	YES	R2710
	HPE X120 1G SFP LC SX Xcvr (JD118B)	YES	R2710
	HPE X120 1G SFP LC LX Xcvr (JD119B)	YES	R2710
	HPE X125 1G SFP LC LH80 Xcvr (JD063B)	YES	R2710

HPE FlexFabric 11900 switch series minimum software version requirements

Switch or module	Transceiver module (Product code)	Minimum software release	
		DDM support	Release version
HP FlexFabric 11900 32-port 10GbE SFP+ SF Module (JG611A)	HPE X120 1G SFP RJ45 T Xcvr (JD089B)	YES	R2111P02
	HPE X120 1G SFP LC SX Xcvr (JD118B)	YES	R2111P02
	HPE X120 1G SFP LC LX Xcvr (JD119B)	YES	R2111P02
	HPE X120 1G SFP LC LH100 Xcvr (JD103A)	YES	R2111P02
	HPE X120 1G SFP LC BX 10-U Xcvr (JD098B)	YES	R2111P02
	HPE X120 1G SFP LC BX 10-D Xcvr (JD099B)	YES	R2111P02
	HPE X170 1G SFP LC LH70 1470 Xcvr (JD113A)	YES	R2111P02
	HPE X170 1G SFP LC LH70 1490 Xcvr (JD114A)	YES	R2111P02
	HPE X170 1G SFP LC LH70 1510 Xcvr (JD115A)	YES	R2111P02
	HPE X170 1G SFP LC LH70 1530 Xcvr (JD116A)	YES	R2111P02
	HPE X170 1G SFP LC LH70 1550 Xcvr (JD109A)	YES	R2111P02
	HPE X170 1G SFP LC LH70 1570 Xcvr (JD110A)	YES	R2111P02
	HPE X170 1G SFP LC LH70 1590 Xcvr (JD111A)	YES	R2111P02
	HPE X170 1G SFP LC LH70 1610 Xcvr (JD112A)	YES	R2111P02
HP FlexFabric 11900 48-port 10GbE SFP+ SF Module (JG612A)	HPE X120 1G SFP RJ45 T Xcvr (JD089B)	YES	R2111P02
	HPE X120 1G SFP LC SX Xcvr (JD118B)	YES	R2111P02
	HPE X120 1G SFP LC LX Xcvr (JD119B)	YES	R2111P02
	HPE X120 1G SFP LC LH100 Xcvr (JD103A)	YES	R2111P02
	HPE X120 1G SFP LC BX 10-U Xcvr (JD098B)	YES	R2111P02

Switch or module	Transceiver module (Product code)	Minimum software release	
		DDM support	Release version
	HPE X120 1G SFP LC BX 10-D Xcvr (JD099B)	YES	R2111P02
	HPE X170 1G SFP LC LH70 1470 Xcvr (JD113A)	YES	R2111P02
	HPE X170 1G SFP LC LH70 1490 Xcvr (JD114A)	YES	R2111P02
	HPE X170 1G SFP LC LH70 1510 Xcvr (JD115A)	YES	R2111P02
	HPE X170 1G SFP LC LH70 1530 Xcvr (JD116A)	YES	R2111P02
	HPE X170 1G SFP LC LH70 1550 Xcvr (JD109A)	YES	R2111P02
	HPE X170 1G SFP LC LH70 1570 Xcvr (JD110A)	YES	R2111P02
	HPE X170 1G SFP LC LH70 1590 Xcvr (JD111A)	YES	R2111P02
	HPE X170 1G SFP LC LH70 1610 Xcvr (JD112A)	YES	R2111P02

HPE FlexFabric 10500 switch series minimum software version requirements

Switch or module	Transceiver module (Product code)	Minimum software release	
		DDM support	Release version
HP A10500 16-port 10-GbE SFP+ SC Module (JC628A)	HPE X120 1G SFP RJ45 T Xcvr (JD089B)	YES	R1208P09
	HPE X120 1G SFP LC SX Xcvr (JD118B)	YES	R1208P09
	HPE X120 1G SFP LC LX Xcvr (JD119B)	YES	R1208P09
	HPE X120 1G SFP LC LH100 Xcvr (JD103A)	YES	R1208P09
	HPE X120 1G SFP LC BX 10-U Xcvr (JD098B)	YES	R1208P09
	HPE X120 1G SFP LC BX 10-D Xcvr (JD099B)	YES	R1208P09
	HPE X170 1G SFP LC LH70 1470 Xcvr (JD113A)	YES	R1208P09
	HPE X170 1G SFP LC LH70 1490 Xcvr (JD114A)	YES	R1208P09
	HPE X170 1G SFP LC LH70 1510 Xcvr (JD115A)	YES	R1208P09
	HPE X170 1G SFP LC LH70 1530 Xcvr (JD116A)	YES	R1208P09
	HPE X170 1G SFP LC LH70 1550 Xcvr (JD109A)	YES	R1208P09
	HPE X170 1G SFP LC LH70 1570 Xcvr (JD110A)	YES	R1208P09
	HPE X170 1G SFP LC LH70 1590 Xcvr (JD111A)	YES	R1208P09
HPE X170 1G SFP LC LH70 1610 Xcvr (JD112A)	YES	R1208P09	
HP A10500 8-port 10-GbE SFP+ EB Module (JC629A)	HPE X120 1G SFP RJ45 T Xcvr (JD089B)	YES	R1208P09
	HPE X120 1G SFP LC SX Xcvr (JD118B)	YES	R1208P09
	HPE X120 1G SFP LC LX Xcvr (JD119B)	YES	R1208P09
	HPE X120 1G SFP LC LH100 Xcvr (JD103A)	YES	R1208P09

Switch or module	Transceiver module (Product code)	Minimum software release	
		DDM support	Release version
	HPE X120 1G SFP LC BX 10-U Xcvr (JD098B)	YES	R1208P09
	HPE X120 1G SFP LC BX 10-D Xcvr (JD099B)	YES	R1208P09
	HPE X170 1G SFP LC LH70 1470 Xcvr (JD113A)	YES	R1208P09
	HPE X170 1G SFP LC LH70 1490 Xcvr (JD114A)	YES	R1208P09
	HPE X170 1G SFP LC LH70 1510 Xcvr (JD115A)	YES	R1208P09
	HPE X170 1G SFP LC LH70 1530 Xcvr (JD116A)	YES	R1208P09
	HPE X170 1G SFP LC LH70 1550 Xcvr (JD109A)	YES	R1208P09
	HPE X170 1G SFP LC LH70 1570 Xcvr (JD110A)	YES	R1208P09
	HPE X170 1G SFP LC LH70 1590 Xcvr (JD111A)	YES	R1208P09
	HPE X170 1G SFP LC LH70 1610 Xcvr (JD112A)	YES	R1208P09
HP A10500 8-port 10-GbE SFP+ EA Module (JC630A)	HPE X120 1G SFP RJ45 T Xcvr (JD089B)	YES	R1208P09
	HPE X120 1G SFP LC SX Xcvr (JD118B)	YES	R1208P09
	HPE X120 1G SFP LC LX Xcvr (JD119B)	YES	R1208P09
	HPE X120 1G SFP LC LH100 Xcvr (JD103A)	YES	R1208P09
	HPE X120 1G SFP LC BX 10-U Xcvr (JD098B)	YES	R1208P09
	HPE X120 1G SFP LC BX 10-D Xcvr (JD099B)	YES	R1208P09
	HPE X170 1G SFP LC LH70 1470 Xcvr (JD113A)	YES	R1208P09
	HPE X170 1G SFP LC LH70 1490 Xcvr (JD114A)	YES	R1208P09
	HPE X170 1G SFP LC LH70 1510 Xcvr (JD115A)	YES	R1208P09
	HPE X170 1G SFP LC LH70 1530 Xcvr (JD116A)	YES	R1208P09
	HPE X170 1G SFP LC LH70 1550 Xcvr (JD109A)	YES	R1208P09
	HPE X170 1G SFP LC LH70 1570 Xcvr (JD110A)	YES	R1208P09
	HPE X170 1G SFP LC LH70 1590 Xcvr (JD111A)	YES	R1208P09
	HPE X170 1G SFP LC LH70 1610 Xcvr (JD112A)	YES	R1208P09
HP A10500 8-port 10-GbE SFP+ SE Module (JC631A)	HPE X120 1G SFP RJ45 T Xcvr (JD089B)	YES	R1208P09
	HPE X120 1G SFP LC SX Xcvr (JD118B)	YES	R1208P09
	HPE X120 1G SFP LC LX Xcvr (JD119B)	YES	R1208P09
	HPE X120 1G SFP LC LH100 Xcvr (JD103A)	YES	R1208P09
	HPE X120 1G SFP LC BX 10-U Xcvr (JD098B)	YES	R1208P09
	HPE X120 1G SFP LC BX 10-D Xcvr (JD099B)	YES	R1208P09
	HPE X170 1G SFP LC LH70 1470 Xcvr (JD113A)	YES	R1208P09
	HPE X170 1G SFP LC LH70 1490 Xcvr (JD114A)	YES	R1208P09
	HPE X170 1G SFP LC LH70 1510 Xcvr (JD115A)	YES	R1208P09
	HPE X170 1G SFP LC LH70 1530 Xcvr (JD116A)	YES	R1208P09

Switch or module	Transceiver module (Product code)	Minimum software release	
		DDM support	Release version
	HPE X170 1G SFP LC LH70 1550 Xcvr (JD109A)	YES	R1208P09
	HPE X170 1G SFP LC LH70 1570 Xcvr (JD110A)	YES	R1208P09
	HPE X170 1G SFP LC LH70 1590 Xcvr (JD111A)	YES	R1208P09
	HPE X170 1G SFP LC LH70 1610 Xcvr (JD112A)	YES	R1208P09
HPE FlexNetwork 10500 32-port 10GbE SFP+ SF Module (JC755A)	HPE X120 1G SFP RJ45 T Xcvr (JD089B)	YES	R1208P09
	HPE X120 1G SFP LC SX Xcvr (JD118B)	YES	R1208P09
	HPE X120 1G SFP LC LX Xcvr (JD119B)	YES	R1208P09
	HPE X120 1G SFP LC LH100 Xcvr (JD103A)	YES	R1208P09
	HPE X120 1G SFP LC BX 10-U Xcvr (JD098B)	YES	R1208P09
	HPE X120 1G SFP LC BX 10-D Xcvr (JD099B)	YES	R1208P09
	HPE X170 1G SFP LC LH70 1470 Xcvr (JD113A)	YES	R1208P09
	HPE X170 1G SFP LC LH70 1490 Xcvr (JD114A)	YES	R1208P09
	HPE X170 1G SFP LC LH70 1510 Xcvr (JD115A)	YES	R1208P09
	HPE X170 1G SFP LC LH70 1530 Xcvr (JD116A)	YES	R1208P09
	HPE X170 1G SFP LC LH70 1550 Xcvr (JD109A)	YES	R1208P09
	HPE X170 1G SFP LC LH70 1570 Xcvr (JD110A)	YES	R1208P09
	HPE X170 1G SFP LC LH70 1590 Xcvr (JD111A)	YES	R1208P09
	HPE X170 1G SFP LC LH70 1610 Xcvr (JD112A)	YES	R1208P09
	HPE FlexNetwork 10500 48-port 10GbE SFP+ SF Module (JC756A)	HPE X120 1G SFP RJ45 T Xcvr (JD089B)	YES
HPE X120 1G SFP LC SX Xcvr (JD118B)		YES	R1208P09
HPE X120 1G SFP LC LX Xcvr (JD119B)		YES	R1208P09
HPE X120 1G SFP LC LH100 Xcvr (JD103A)		YES	R1208P09
HPE X120 1G SFP LC BX 10-U Xcvr (JD098B)		YES	R1208P09
HPE X120 1G SFP LC BX 10-D Xcvr (JD099B)		YES	R1208P09
HPE X170 1G SFP LC LH70 1470 Xcvr (JD113A)		YES	R1208P09
HPE X170 1G SFP LC LH70 1490 Xcvr (JD114A)		YES	R1208P09
HPE X170 1G SFP LC LH70 1510 Xcvr (JD115A)		YES	R1208P09
HPE X170 1G SFP LC LH70 1530 Xcvr (JD116A)		YES	R1208P09
HPE X170 1G SFP LC LH70 1550 Xcvr (JD109A)		YES	R1208P09
HPE X170 1G SFP LC LH70 1570 Xcvr (JD110A)		YES	R1208P09
HPE X170 1G SFP LC LH70 1590 Xcvr (JD111A)		YES	R1208P09
HPE X170 1G SFP LC LH70 1610 Xcvr (JD112A)		YES	R1208P09

Switch or module	Transceiver module (Product code)	Minimum software release	
		DDM support	Release version
HP A10500 48-port GbE SFP EA Module (JC622A)	HPE X120 1G SFP RJ45 T Xcvr (JD089B)	YES	R1208P09
	HPE X120 1G SFP LC SX Xcvr (JD118B)	YES	R1208P09
	HPE X120 1G SFP LC LX Xcvr (JD119B)	YES	R1208P09
	HPE X120 1G SFP LC LH100 Xcvr (JD103A)	YES	R1208P09
	HPE X120 1G SFP LC BX 10-U Xcvr (JD098B)	YES	R1208P09
	HPE X120 1G SFP LC BX 10-D Xcvr (JD099B)	YES	R1208P09
	HPE X170 1G SFP LC LH70 1470 Xcvr (JD113A)	YES	R1208P09
	HPE X170 1G SFP LC LH70 1490 Xcvr (JD114A)	YES	R1208P09
	HPE X170 1G SFP LC LH70 1510 Xcvr (JD115A)	YES	R1208P09
	HPE X170 1G SFP LC LH70 1530 Xcvr (JD116A)	YES	R1208P09
	HPE X170 1G SFP LC LH70 1550 Xcvr (JD109A)	YES	R1208P09
	HPE X170 1G SFP LC LH70 1570 Xcvr (JD110A)	YES	R1208P09
	HPE X170 1G SFP LC LH70 1590 Xcvr (JD111A)	YES	R1208P09
	HPE X170 1G SFP LC LH70 1610 Xcvr (JD112A)	YES	R1208P09
	HPE X115 100M SFP LC FX Xcvr (JD102B)	YES	R1208P09
	HPE X110 100M SFP LC LX Xcvr (JD120B)	YES	R1208P09
	HPE X110 100M SFP LC LH40 Xcvr (JD090A)	YES	R1208P09
	HPE X110 100M SFP LC LH80 Xcvr (JD091A)	YES	R1208P09
	HPE 3600 Switch SFP Stacking Kit (JD324B)	NO	R1208P09
	HPE A10500 48-port GbE SFP EB Module (JC625A)	HPE X120 1G SFP RJ45 T Xcvr (JD089B)	YES
HPE X120 1G SFP LC SX Xcvr (JD118B)		YES	R1208P09
HPE X120 1G SFP LC LX Xcvr (JD119B)		YES	R1208P09
HPE X120 1G SFP LC LH100 Xcvr (JD103A)		YES	R1208P09
HPE X120 1G SFP LC BX 10-U Xcvr (JD098B)		YES	R1208P09
HPE X120 1G SFP LC BX 10-D Xcvr (JD099B)		YES	R1208P09
HPE X170 1G SFP LC LH70 1470 Xcvr (JD113A)		YES	R1208P09
HPE X170 1G SFP LC LH70 1490 Xcvr (JD114A)		YES	R1208P09
HPE X170 1G SFP LC LH70 1510 Xcvr (JD115A)		YES	R1208P09
HPE X170 1G SFP LC LH70 1530 Xcvr (JD116A)		YES	R1208P09
HPE X170 1G SFP LC LH70 1550 Xcvr (JD109A)		YES	R1208P09
HPE X170 1G SFP LC LH70 1570 Xcvr (JD110A)		YES	R1208P09
HPE X170 1G SFP LC LH70 1590 Xcvr (JD111A)		YES	R1208P09
HPE X170 1G SFP LC LH70 1610 Xcvr (JD112A)		YES	R1208P09
HPE X115 100M SFP LC FX Xcvr (JD102B)	YES	R1208P09	

Switch or module	Transceiver module (Product code)	Minimum software release	
		DDM support	Release version
	HPE X110 100M SFP LC LX Xcvr (JD120B)	YES	R1208P09
	HPE X110 100M SFP LC LH40 Xcvr (JD090A)	YES	R1208P09
	HPE X110 100M SFP LC LH80 Xcvr (JD091A)	YES	R1208P09
	HPE 3600 Switch SFP Stacking Kit (JD324B)	NO	R1208P09
HPE A10500 48-port GbE SFP SE Module (JC619A)	HPE X120 1G SFP RJ45 T Xcvr (JD089B)	YES	R1208P09
	HPE X120 1G SFP LC SX Xcvr (JD118B)	YES	R1208P09
	HPE X120 1G SFP LC LX Xcvr (JD119B)	YES	R1208P09
	HPE X120 1G SFP LC LH100 Xcvr (JD103A)	YES	R1208P09
	HPE X120 1G SFP LC BX 10-U Xcvr (JD098B)	YES	R1208P09
	HPE X120 1G SFP LC BX 10-D Xcvr (JD099B)	YES	R1208P09
	HPE X170 1G SFP LC LH70 1470 Xcvr (JD113A)	YES	R1208P09
	HPE X170 1G SFP LC LH70 1490 Xcvr (JD114A)	YES	R1208P09
	HPE X170 1G SFP LC LH70 1510 Xcvr (JD115A)	YES	R1208P09
	HPE X170 1G SFP LC LH70 1530 Xcvr (JD116A)	YES	R1208P09
	HPE X170 1G SFP LC LH70 1550 Xcvr (JD109A)	YES	R1208P09
	HPE X170 1G SFP LC LH70 1570 Xcvr (JD110A)	YES	R1208P09
	HPE X170 1G SFP LC LH70 1590 Xcvr (JD111A)	YES	R1208P09
	HPE X170 1G SFP LC LH70 1610 Xcvr (JD112A)	YES	R1208P09
	HPE X115 100M SFP LC FX Xcvr (JD102B)	YES	R1208P09
	HPE X110 100M SFP LC LX Xcvr (JD120B)	YES	R1208P09
	HPE X110 100M SFP LC LH40 Xcvr (JD090A)	YES	R1208P09
	HPE X110 100M SFP LC LH80 Xcvr (JD091A)	YES	R1208P09
	HPE 3600 Switch SFP Stacking Kit (JD324B)	NO	R1208P09
	HPE A10500 24p GbE / 2p 10-GbE XFP EA Mod (JC621A)	HPE X120 1G SFP RJ45 T Xcvr (JD089B)	YES
HPE X120 1G SFP LC SX Xcvr (JD118B)		YES	R1208P09
HPE X120 1G SFP LC LX Xcvr (JD119B)		YES	R1208P09
HPE X120 1G SFP LC LH100 Xcvr (JD103A)		YES	R1208P09
HPE X120 1G SFP LC BX 10-U Xcvr (JD098B)		YES	R1208P09
HPE X120 1G SFP LC BX 10-D Xcvr (JD099B)		YES	R1208P09
HPE X170 1G SFP LC LH70 1470 Xcvr (JD113A)		YES	R1208P09
HPE X170 1G SFP LC LH70 1490 Xcvr (JD114A)		YES	R1208P09
HPE X170 1G SFP LC LH70 1510 Xcvr (JD115A)		YES	R1208P09
HPE X170 1G SFP LC LH70 1530 Xcvr (JD116A)		YES	R1208P09
HPE X170 1G SFP LC LH70 1550 Xcvr (JD109A)		YES	R1208P09

Switch or module	Transceiver module (Product code)	Minimum software release	
		DDM support	Release version
	HPE X170 1G SFP LC LH70 1570 Xcvr (JD110A)	YES	R1208P09
	HPE X170 1G SFP LC LH70 1590 Xcvr (JD111A)	YES	R1208P09
	HPE X170 1G SFP LC LH70 1610 Xcvr (JD112A)	YES	R1208P09
	HPE X115 100M SFP LC FX Xcvr (JD102B)	YES	R1208P09
	HPE X110 100M SFP LC LX Xcvr (JD120B)	YES	R1208P09
	HPE X110 100M SFP LC LH40 Xcvr (JD090A)	YES	R1208P09
	HPE X110 100M SFP LC LH80 Xcvr (JD091A)	YES	R1208P09
	HPE 3600 Switch SFP Stacking Kit (JD324B)	NO	R1208P09
HP A10500 24p GbE / 2p 10-GbE XFP SE Mod (JC617A)	HPE X120 1G SFP RJ45 T Xcvr (JD089B)	YES	R1208P09
	HPE X120 1G SFP LC SX Xcvr (JD118B)	YES	R1208P09
	HPE X120 1G SFP LC LX Xcvr (JD119B)	YES	R1208P09
	HPE X120 1G SFP LC LH100 Xcvr (JD103A)	YES	R1208P09
	HPE X120 1G SFP LC BX 10-U Xcvr (JD098B)	YES	R1208P09
	HPE X120 1G SFP LC BX 10-D Xcvr (JD099B)	YES	R1208P09
	HPE X170 1G SFP LC LH70 1470 Xcvr (JD113A)	YES	R1208P09
	HPE X170 1G SFP LC LH70 1490 Xcvr (JD114A)	YES	R1208P09
	HPE X170 1G SFP LC LH70 1510 Xcvr (JD115A)	YES	R1208P09
	HPE X170 1G SFP LC LH70 1530 Xcvr (JD116A)	YES	R1208P09
	HPE X170 1G SFP LC LH70 1550 Xcvr (JD109A)	YES	R1208P09
	HPE X170 1G SFP LC LH70 1570 Xcvr (JD110A)	YES	R1208P09
	HPE X170 1G SFP LC LH70 1590 Xcvr (JD111A)	YES	R1208P09
	HPE X170 1G SFP LC LH70 1610 Xcvr (JD112A)	YES	R1208P09
	HPE X115 100M SFP LC FX Xcvr (JD102B)	YES	R1208P09
	HPE X110 100M SFP LC LX Xcvr (JD120B)	YES	R1208P09
	HPE X110 100M SFP LC LH40 Xcvr (JD090A)	YES	R1208P09
	HPE X110 100M SFP LC LH80 Xcvr (JD091A)	YES	R1208P09
	HPE 3600 Switch SFP Stacking Kit (JD324B)	NO	R1208P09
	HP 10500 16-port GbE SFP / 8-port GbE Combo SE Module (JC763A)	HPE X120 1G SFP RJ45 T Xcvr (JD089B)	YES
HPE X120 1G SFP LC SX Xcvr (JD118B)		YES	R1208P09
HPE X120 1G SFP LC LX Xcvr (JD119B)		YES	R1208P09
HPE X120 1G SFP LC LH100 Xcvr (JD103A)		YES	R1208P09
HPE X120 1G SFP LC BX 10-U Xcvr (JD098B)		YES	R1208P09
HPE X120 1G SFP LC BX 10-D Xcvr (JD099B)		YES	R1208P09
HPE X170 1G SFP LC LH70 1470 Xcvr (JD113A)		YES	R1208P09

Switch or module	Transceiver module (Product code)	Minimum software release	
		DDM support	Release version
	HPE X170 1G SFP LC LH70 1490 Xcvr (JD114A)	YES	R1208P09
	HPE X170 1G SFP LC LH70 1510 Xcvr (JD115A)	YES	R1208P09
	HPE X170 1G SFP LC LH70 1530 Xcvr (JD116A)	YES	R1208P09
	HPE X170 1G SFP LC LH70 1550 Xcvr (JD109A)	YES	R1208P09
	HPE X170 1G SFP LC LH70 1570 Xcvr (JD110A)	YES	R1208P09
	HPE X170 1G SFP LC LH70 1590 Xcvr (JD111A)	YES	R1208P09
	HPE X170 1G SFP LC LH70 1610 Xcvr (JD112A)	YES	R1208P09
	HPE X115 100M SFP LC FX Xcvr (JD102B)	YES	R1208P09
	HPE X110 100M SFP LC LX Xcvr (JD120B)	YES	R1208P09
	HPE X110 100M SFP LC LH40 Xcvr (JD090A)	YES	R1208P09
	HPE X110 100M SFP LC LH80 Xcvr (JD091A)	YES	R1208P09
	HPE 3600 Switch SFP Stacking Kit (JD324B)	NO	R1208P09
	HP A10500 24p GbE / 2p 10-GbE XFP EB Mod (JC626A)	HPE X120 1G SFP RJ45 T Xcvr (JD089B)	YES
HPE X120 1G SFP LC SX Xcvr (JD118B)		YES	R1208P09
HPE X120 1G SFP LC LX Xcvr (JD119B)		YES	R1208P09
HPE X120 1G SFP LC LH100 Xcvr (JD103A)		YES	R1208P09
HPE X120 1G SFP LC BX 10-U Xcvr (JD098B)		YES	R1208P09
HPE X120 1G SFP LC BX 10-D Xcvr (JD099B)		YES	R1208P09
HPE X170 1G SFP LC LH70 1470 Xcvr (JD113A)		YES	R1208P09
HPE X170 1G SFP LC LH70 1490 Xcvr (JD114A)		YES	R1208P09
HPE X170 1G SFP LC LH70 1510 Xcvr (JD115A)		YES	R1208P09
HPE X170 1G SFP LC LH70 1530 Xcvr (JD116A)		YES	R1208P09
HPE X170 1G SFP LC LH70 1550 Xcvr (JD109A)		YES	R1208P09
HPE X170 1G SFP LC LH70 1570 Xcvr (JD110A)		YES	R1208P09
HPE X170 1G SFP LC LH70 1590 Xcvr (JD111A)		YES	R1208P09
HPE X170 1G SFP LC LH70 1610 Xcvr (JD112A)		YES	R1208P09
HPE X115 100M SFP LC FX Xcvr (JD102B)		YES	R1208P09
HPE X110 100M SFP LC LX Xcvr (JD120B)		YES	R1208P09
HPE X110 100M SFP LC LH40 Xcvr (JD090A)		YES	R1208P09
HPE X110 100M SFP LC LH80 Xcvr (JD091A)		YES	R1208P09
HPE 3600 Switch SFP Stacking Kit (JD324B)		NO	R1208P09

HPE FlexFabric 7900 switch series minimum software version requirements

Switch or module	Transceiver module (Product code)	Minimum software release	
		DDM support	Release version
HPE FlexFabric 7900 24-port 1/10GbE SFP+ FX Module (JG845A)	HPE X120 1G SFP LC SX Xcvr (JD118B)	YES	R2117
	HPE X120 1G SFP LC LX Xcvr (JD119B)	YES	R2117
	HPE X120 1G SFP LC LH100 Xcvr (JD103A)	YES	R2117
	HPE X120 1G SFP LC BX 10-U Xcvr (JD098B)	YES	R2117
	HPE X120 1G SFP LC BX 10-D Xcvr (JD099B)	YES	R2117
	HPE X170 1G SFP LC LH70 1470 Xcvr (JD113A)	YES	R2117
	HPE X170 1G SFP LC LH70 1490 Xcvr (JD114A)	YES	R2117
	HPE X170 1G SFP LC LH70 1510 Xcvr (JD115A)	YES	R2117
	HPE X170 1G SFP LC LH70 1530 Xcvr (JD116A)	YES	R2117
	HPE X170 1G SFP LC LH70 1550 Xcvr (JD109A)	YES	R2117
	HPE X170 1G SFP LC LH70 1570 Xcvr (JD110A)	YES	R2117
	HPE X170 1G SFP LC LH70 1590 Xcvr (JD111A)	YES	R2117
	HPE X170 1G SFP LC LH70 1610 Xcvr (JD112A)	YES	R2117
	HPE FlexFabric 7900 2-port 100GbE CXP/6-port 40GbE QSFP+/4-port 10GbE SFP+ FX Module (JH002A)	HPE X120 1G SFP RJ45 T Xcvr (JD089B)	YES
HPE X120 1G SFP LC SX Xcvr (JD118B)		YES	R1138P01
HPE X120 1G SFP LC LX Xcvr (JD119B)		YES	R1138P01
HPE X120 1G SFP LC LH100 Xcvr (JD103A)		YES	R1138P01
HPE X120 1G SFP LC BX 10-U Xcvr (JD098B)		YES	R1138P01
HPE X120 1G SFP LC BX 10-D Xcvr (JD099B)		YES	R1138P01
HPE X170 1G SFP LC LH70 1470 Xcvr (JD113A)		YES	R1138P01
HPE X170 1G SFP LC LH70 1490 Xcvr (JD114A)		YES	R1138P01
HPE X170 1G SFP LC LH70 1510 Xcvr (JD115A)		YES	R1138P01
HPE X170 1G SFP LC LH70 1530 Xcvr (JD116A)		YES	R1138P01
HPE X170 1G SFP LC LH70 1550 Xcvr (JD109A)		YES	R1138P01
HPE X170 1G SFP LC LH70 1570 Xcvr (JD110A)		YES	R1138P01
HPE X170 1G SFP LC LH70 1590 Xcvr (JD111A)		YES	R1138P01
HPE X170 1G SFP LC LH70 1610 Xcvr (JD112A)		YES	R1138P01

HPE FlexFabric 7500 switch series minimum software version requirements

Switch or module	Transceiver module (Product code)	Minimum software release	
		DDM support	Release version
HPE FlexNetwork 7500 8-port 10G SFP+ SC Module (JF290A)	HPE X120 1G SFP RJ45 T Xcvr (JD089B)	YES	R6708P09
	HPE X120 1G SFP LC SX Xcvr (JD118B)	YES	R6708P09
	HPE X120 1G SFP LC LX Xcvr (JD119B)	YES	R6708P09
	HPE X120 1G SFP LC LH100 Xcvr (JD103A)	YES	R6708P09
	HPE X120 1G SFP LC BX 10-U Xcvr (JD098B)	YES	R6708P09
	HPE X120 1G SFP LC BX 10-D Xcvr (JD099B)	YES	R6708P09
	HPE X170 1G SFP LC LH70 1470 Xcvr (JD113A)	YES	R6708P09
	HPE X170 1G SFP LC LH70 1490 Xcvr (JD114A)	YES	R6708P09
	HPE X170 1G SFP LC LH70 1510 Xcvr (JD115A)	YES	R6708P09
	HPE X170 1G SFP LC LH70 1530 Xcvr (JD116A)	YES	R6708P09
	HPE X170 1G SFP LC LH70 1550 Xcvr (JD109A)	YES	R6708P09
	HPE X170 1G SFP LC LH70 1570 Xcvr (JD110A)	YES	R6708P09
	HPE X170 1G SFP LC LH70 1590 Xcvr (JD111A)	YES	R6708P09
	HPE X170 1G SFP LC LH70 1610 Xcvr (JD112A)	YES	R6708P09
HPE A7500 48-Port 100Base-FX SA Module (JD197B)	HPE X115 100M SFP LC FX Xcvr (JD102B)	YES	R6708P09
	HPE X110 100M SFP LC LX Xcvr (JD120B)	YES	R6708P09
	HPE X110 100M SFP LC LH40 Xcvr (JD090A)	YES	R6708P09
	HPE X110 100M SFP LC LH80 Xcvr (JD091A)	YES	R6708P09
HPE A7500 24-Port 1000BASE-X (SFP) w/ 8 Combo SC Module (JD223A)	HPE X120 1G SFP RJ45 T Xcvr (JD089B)	YES	R6708P09
	HPE X120 1G SFP LC SX Xcvr (JD118B)	YES	R6708P09
	HPE X120 1G SFP LC LX Xcvr (JD119B)	YES	R6708P09
	HPE X120 1G SFP LC LH100 Xcvr (JD103A)	YES	R6708P09
	HPE X120 1G SFP LC BX 10-U Xcvr (JD098B)	YES	R6708P09
	HPE X120 1G SFP LC BX 10-D Xcvr (JD099B)	YES	R6708P09
	HPE X170 1G SFP LC LH70 1470 Xcvr (JD113A)	YES	R6708P09
	HPE X170 1G SFP LC LH70 1490 Xcvr (JD114A)	YES	R6708P09
	HPE X170 1G SFP LC LH70 1510 Xcvr (JD115A)	YES	R6708P09
	HPE X170 1G SFP LC LH70 1530 Xcvr (JD116A)	YES	R6708P09
	HPE X170 1G SFP LC LH70 1550 Xcvr (JD109A)	YES	R6708P09
	HPE X170 1G SFP LC LH70 1570 Xcvr (JD110A)	YES	R6708P09
	HPE X170 1G SFP LC LH70 1590 Xcvr (JD111A)	YES	R6708P09

Switch or module	Transceiver module (Product code)	Minimum software release	
		DDM support	Release version
	HPE X170 1G SFP LC LH70 1610 Xcvr (JD112A)	YES	R6708P09
	HPE X115 100M SFP LC FX Xcvr (JD102B)	YES	R6708P09
	HPE X110 100M SFP LC LX Xcvr (JD120B)	YES	R6708P09
	HPE X110 100M SFP LC LH40 Xcvr (JD090A)	YES	R6708P09
	HPE X110 100M SFP LC LH80 Xcvr (JD091A)	YES	R6708P09
	HPE 3600 Switch SFP Stacking Kit (JD324B)	NO	R6708P09
HPE A7503-S Fabric with 24-port 1000BASE-X (JD222A)	HPE X120 1G SFP RJ45 T Xcvr (JD089B)	YES	R6708P09
	HPE X120 1G SFP LC SX Xcvr (JD118B)	YES	R6708P09
	HPE X120 1G SFP LC LX Xcvr (JD119B)	YES	R6708P09
	HPE X120 1G SFP LC LH100 Xcvr (JD103A)	YES	R6708P09
	HPE X120 1G SFP LC BX 10-U Xcvr (JD098B)	YES	R6708P09
	HPE X120 1G SFP LC BX 10-D Xcvr (JD099B)	YES	R6708P09
	HPE X170 1G SFP LC LH70 1470 Xcvr (JD113A)	YES	R6708P09
	HPE X170 1G SFP LC LH70 1490 Xcvr (JD114A)	YES	R6708P09
	HPE X170 1G SFP LC LH70 1510 Xcvr (JD115A)	YES	R6708P09
	HPE X170 1G SFP LC LH70 1530 Xcvr (JD116A)	YES	R6708P09
	HPE X170 1G SFP LC LH70 1550 Xcvr (JD109A)	YES	R6708P09
	HPE X170 1G SFP LC LH70 1570 Xcvr (JD110A)	YES	R6708P09
	HPE X170 1G SFP LC LH70 1590 Xcvr (JD111A)	YES	R6708P09
	HPE X170 1G SFP LC LH70 1610 Xcvr (JD112A)	YES	R6708P09
	HPE X115 100M SFP LC FX Xcvr (JD102B)	YES	R6708P09
	HPE X110 100M SFP LC LX Xcvr (JD120B)	YES	R6708P09
	HPE X110 100M SFP LC LH40 Xcvr (JD090A)	YES	R6708P09
	HPE X110 100M SFP LC LH80 Xcvr (JD091A)	YES	R6708P09
	HPE 3600 Switch SFP Stacking Kit (JD324B)	NO	R6708P09
HPE FlexNetwork 7500 24-port GbE SFP/2-port 10GbE XFP Module (JD205A)	HPE X120 1G SFP RJ45 T Xcvr (JD089B)	YES	R6708P09
	HPE X120 1G SFP LC SX Xcvr (JD118B)	YES	R6708P09
	HPE X120 1G SFP LC LX Xcvr (JD119B)	YES	R6708P09
	HPE X120 1G SFP LC LH100 Xcvr (JD103A)	YES	R6708P09
	HPE X120 1G SFP LC BX 10-U Xcvr (JD098B)	YES	R6708P09
	HPE X120 1G SFP LC BX 10-D Xcvr (JD099B)	YES	R6708P09
	HPE X170 1G SFP LC LH70 1470 Xcvr (JD113A)	YES	R6708P09
	HPE X170 1G SFP LC LH70 1490 Xcvr (JD114A)	YES	R6708P09
	HPE X170 1G SFP LC LH70 1510 Xcvr (JD115A)	YES	R6708P09

Switch or module	Transceiver module (Product code)	Minimum software release	
		DDM support	Release version
	HPE X170 1G SFP LC LH70 1530 Xcvr (JD116A)	YES	R6708P09
	HPE X170 1G SFP LC LH70 1550 Xcvr (JD109A)	YES	R6708P09
	HPE X170 1G SFP LC LH70 1570 Xcvr (JD110A)	YES	R6708P09
	HPE X170 1G SFP LC LH70 1590 Xcvr (JD111A)	YES	R6708P09
	HPE X170 1G SFP LC LH70 1610 Xcvr (JD112A)	YES	R6708P09
	HPE X115 100M SFP LC FX Xcvr (JD102B)	YES	R6708P09
	HPE X110 100M SFP LC LX Xcvr (JD120B)	YES	R6708P09
	HPE X110 100M SFP LC LH40 Xcvr (JD090A)	YES	R6708P09
	HPE X110 100M SFP LC LH80 Xcvr (JD091A)	YES	R6708P09
	HPE 3600 Switch SFP Stacking Kit (JD324B)	NO	R6708P09
HPE FlexNetwork 7500 40-port Gig-T/8-port SFP PoE-upgradable SC Module (JD228B)	HPE X120 1G SFP RJ45 T Xcvr (JD089B)	YES	R6708P09
	HPE X120 1G SFP LC SX Xcvr (JD118B)	YES	R6708P09
	HPE X120 1G SFP LC LX Xcvr (JD119B)	YES	R6708P09
	HPE X120 1G SFP LC LH100 Xcvr (JD103A)	YES	R6708P09
	HPE X120 1G SFP LC BX 10-U Xcvr (JD098B)	YES	R6708P09
	HPE X120 1G SFP LC BX 10-D Xcvr (JD099B)	YES	R6708P09
	HPE X170 1G SFP LC LH70 1470 Xcvr (JD113A)	YES	R6708P09
	HPE X170 1G SFP LC LH70 1490 Xcvr (JD114A)	YES	R6708P09
	HPE X170 1G SFP LC LH70 1510 Xcvr (JD115A)	YES	R6708P09
	HPE X170 1G SFP LC LH70 1530 Xcvr (JD116A)	YES	R6708P09
	HPE X170 1G SFP LC LH70 1550 Xcvr (JD109A)	YES	R6708P09
	HPE X170 1G SFP LC LH70 1570 Xcvr (JD110A)	YES	R6708P09
	HPE X170 1G SFP LC LH70 1590 Xcvr (JD111A)	YES	R6708P09
	HPE X170 1G SFP LC LH70 1610 Xcvr (JD112A)	YES	R6708P09
	HPE X115 100M SFP LC FX Xcvr (JD102B)	YES	R6708P09
	HPE X110 100M SFP LC LX Xcvr (JD120B)	YES	R6708P09
	HPE X110 100M SFP LC LH40 Xcvr (JD090A)	YES	R6708P09
	HPE X110 100M SFP LC LH80 Xcvr (JD091A)	YES	R6708P09
HPE 3600 Switch SFP Stacking Kit (JD324B)	NO	R6708P09	
HPE FlexNetwork 7500 20-port Gig-T/4-port GbE Combo PoE-upgradable SC Module (JC669A)	HPE X120 1G SFP RJ45 T Xcvr (JD089B)	YES	R6708P09
	HPE X120 1G SFP LC SX Xcvr (JD118B)	YES	R6708P09
	HPE X120 1G SFP LC LX Xcvr (JD119B)	YES	R6708P09
	HPE X120 1G SFP LC LH100 Xcvr (JD103A)	YES	R6708P09
	HPE X120 1G SFP LC BX 10-U Xcvr (JD098B)	YES	R6708P09

Switch or module	Transceiver module (Product code)	Minimum software release	
		DDM support	Release version
	HPE X120 1G SFP LC BX 10-D Xcvr (JD099B)	YES	R6708P09
	HPE X170 1G SFP LC LH70 1470 Xcvr (JD113A)	YES	R6708P09
	HPE X170 1G SFP LC LH70 1490 Xcvr (JD114A)	YES	R6708P09
	HPE X170 1G SFP LC LH70 1510 Xcvr (JD115A)	YES	R6708P09
	HPE X170 1G SFP LC LH70 1530 Xcvr (JD116A)	YES	R6708P09
	HPE X170 1G SFP LC LH70 1550 Xcvr (JD109A)	YES	R6708P09
	HPE X170 1G SFP LC LH70 1570 Xcvr (JD110A)	YES	R6708P09
	HPE X170 1G SFP LC LH70 1590 Xcvr (JD111A)	YES	R6708P09
	HPE X170 1G SFP LC LH70 1610 Xcvr (JD112A)	YES	R6708P09
	HPE X115 100M SFP LC FX Xcvr (JD102B)	YES	R6708P09
	HPE X110 100M SFP LC LX Xcvr (JD120B)	YES	R6708P09
	HPE X110 100M SFP LC LH40 Xcvr (JD090A)	YES	R6708P09
	HPE X110 100M SFP LC LH80 Xcvr (JD091A)	YES	R6708P09
	HPE 3600 Switch SFP Stacking Kit (JD324B)	NO	R6708P09
	HPE FlexNetwork 7500 12-port GbE SFP SC Module (JD207A)	HPE X120 1G SFP RJ45 T Xcvr (JD089B)	YES
HPE X120 1G SFP LC SX Xcvr (JD118B)		YES	R6708P09
HPE X120 1G SFP LC LX Xcvr (JD119B)		YES	R6708P09
HPE X120 1G SFP LC LH100 Xcvr (JD103A)		YES	R6708P09
HPE X120 1G SFP LC BX 10-U Xcvr (JD098B)		YES	R6708P09
HPE X120 1G SFP LC BX 10-D Xcvr (JD099B)		YES	R6708P09
HPE X170 1G SFP LC LH70 1470 Xcvr (JD113A)		YES	R6708P09
HPE X170 1G SFP LC LH70 1490 Xcvr (JD114A)		YES	R6708P09
HPE X170 1G SFP LC LH70 1510 Xcvr (JD115A)		YES	R6708P09
HPE X170 1G SFP LC LH70 1530 Xcvr (JD116A)		YES	R6708P09
HPE X170 1G SFP LC LH70 1550 Xcvr (JD109A)		YES	R6708P09
HPE X170 1G SFP LC LH70 1570 Xcvr (JD110A)		YES	R6708P09
HPE X170 1G SFP LC LH70 1590 Xcvr (JD111A)		YES	R6708P09
HPE X170 1G SFP LC LH70 1610 Xcvr (JD112A)		YES	R6708P09
HPE X115 100M SFP LC FX Xcvr (JD102B)		YES	R6708P09
HPE X110 100M SFP LC LX Xcvr (JD120B)		YES	R6708P09
HPE X110 100M SFP LC LH40 Xcvr (JD090A)		YES	R6708P09
HPE X110 100M SFP LC LH80 Xcvr (JD091A)		YES	R6708P09
HPE 3600 Switch SFP Stacking Kit (JD324B)	NO	R6708P09	

Switch or module	Transceiver module (Product code)	Minimum software release	
		DDM support	Release version
HPE FlexNetwork 7500 24-port GbE SFP SC Module (JD203B)	HPE X120 1G SFP RJ45 T Xcvr (JD089B)	YES	R6708P09
	HPE X120 1G SFP LC SX Xcvr (JD118B)	YES	R6708P09
	HPE X120 1G SFP LC LX Xcvr (JD119B)	YES	R6708P09
	HPE X120 1G SFP LC LH100 Xcvr (JD103A)	YES	R6708P09
	HPE X120 1G SFP LC BX 10-U Xcvr (JD098B)	YES	R6708P09
	HPE X120 1G SFP LC BX 10-D Xcvr (JD099B)	YES	R6708P09
	HPE X170 1G SFP LC LH70 1470 Xcvr (JD113A)	YES	R6708P09
	HPE X170 1G SFP LC LH70 1490 Xcvr (JD114A)	YES	R6708P09
	HPE X170 1G SFP LC LH70 1510 Xcvr (JD115A)	YES	R6708P09
	HPE X170 1G SFP LC LH70 1530 Xcvr (JD116A)	YES	R6708P09
	HPE X170 1G SFP LC LH70 1550 Xcvr (JD109A)	YES	R6708P09
	HPE X170 1G SFP LC LH70 1570 Xcvr (JD110A)	YES	R6708P09
	HPE X170 1G SFP LC LH70 1590 Xcvr (JD111A)	YES	R6708P09
	HPE X170 1G SFP LC LH70 1610 Xcvr (JD112A)	YES	R6708P09
	HPE X115 100M SFP LC FX Xcvr (JD102B)	YES	R6708P09
	HPE X110 100M SFP LC LX Xcvr (JD120B)	YES	R6708P09
	HPE X110 100M SFP LC LH40 Xcvr (JD090A)	YES	R6708P09
	HPE X110 100M SFP LC LH80 Xcvr (JD091A)	YES	R6708P09
	HPE 3600 Switch SFP Stacking Kit (JD324B)	NO	R6708P09
	HPE FlexNetwork 7500 48-port GbE SFP SC Module (JD211B)	HPE X120 1G SFP RJ45 T Xcvr (JD089B)	YES
HPE X120 1G SFP LC SX Xcvr (JD118B)		YES	R6708P09
HPE X120 1G SFP LC LX Xcvr (JD119B)		YES	R6708P09
HPE X120 1G SFP LC LH100 Xcvr (JD103A)		YES	R6708P09
HPE X120 1G SFP LC BX 10-U Xcvr (JD098B)		YES	R6708P09
HPE X120 1G SFP LC BX 10-D Xcvr (JD099B)		YES	R6708P09
HPE X170 1G SFP LC LH70 1470 Xcvr (JD113A)		YES	R6708P09
HPE X170 1G SFP LC LH70 1490 Xcvr (JD114A)		YES	R6708P09
HPE X170 1G SFP LC LH70 1510 Xcvr (JD115A)		YES	R6708P09
HPE X170 1G SFP LC LH70 1530 Xcvr (JD116A)		YES	R6708P09
HPE X170 1G SFP LC LH70 1550 Xcvr (JD109A)		YES	R6708P09
HPE X170 1G SFP LC LH70 1570 Xcvr (JD110A)		YES	R6708P09
HPE X170 1G SFP LC LH70 1590 Xcvr (JD111A)		YES	R6708P09
HPE X170 1G SFP LC LH70 1610 Xcvr (JD112A)		YES	R6708P09
HPE X115 100M SFP LC FX Xcvr (JD102B)	YES	R6708P09	

Switch or module	Transceiver module (Product code)	Minimum software release	
		DDM support	Release version
	HPE X110 100M SFP LC LX Xcvr (JD120B)	YES	R6708P09
	HPE X110 100M SFP LC LH40 Xcvr (JD090A)	YES	R6708P09
	HPE X110 100M SFP LC LH80 Xcvr (JD091A)	YES	R6708P09
	HPE 3600 Switch SFP Stacking Kit (JD324B)	NO	R6708P09
HPE FlexNetwork 7500 48-port GbE SFP SD Module (JD237A)	HPE X120 1G SFP RJ45 T Xcvr (JD089B)	YES	R6708P09
	HPE X120 1G SFP LC SX Xcvr (JD118B)	YES	R6708P09
	HPE X120 1G SFP LC LX Xcvr (JD119B)	YES	R6708P09
	HPE X120 1G SFP LC LH100 Xcvr (JD103A)	YES	R6708P09
	HPE X120 1G SFP LC BX 10-U Xcvr (JD098B)	YES	R6708P09
	HPE X120 1G SFP LC BX 10-D Xcvr (JD099B)	YES	R6708P09
	HPE X170 1G SFP LC LH70 1470 Xcvr (JD113A)	YES	R6708P09
	HPE X170 1G SFP LC LH70 1490 Xcvr (JD114A)	YES	R6708P09
	HPE X170 1G SFP LC LH70 1510 Xcvr (JD115A)	YES	R6708P09
	HPE X170 1G SFP LC LH70 1530 Xcvr (JD116A)	YES	R6708P09
	HPE X170 1G SFP LC LH70 1550 Xcvr (JD109A)	YES	R6708P09
	HPE X170 1G SFP LC LH70 1570 Xcvr (JD110A)	YES	R6708P09
	HPE X170 1G SFP LC LH70 1590 Xcvr (JD111A)	YES	R6708P09
	HPE X170 1G SFP LC LH70 1610 Xcvr (JD112A)	YES	R6708P09
	HPE X115 100M SFP LC FX Xcvr (JD102B)	YES	R6708P09
	HPE X110 100M SFP LC LX Xcvr (JD120B)	YES	R6708P09
	HPE X110 100M SFP LC LH40 Xcvr (JD090A)	YES	R6708P09
	HPE X110 100M SFP LC LH80 Xcvr (JD091A)	YES	R6708P09
	HPE 3600 Switch SFP Stacking Kit (JD324B)	NO	R6708P09
	HPE FlexNetwork 7500 48-port GbE SFP Enhanced Module (JD221A)	HPE X120 1G SFP RJ45 T Xcvr (JD089B)	YES
HPE X120 1G SFP LC SX Xcvr (JD118B)		YES	R6708P09
HPE X120 1G SFP LC LX Xcvr (JD119B)		YES	R6708P09
HPE X120 1G SFP LC LH100 Xcvr (JD103A)		YES	R6708P09
HPE X120 1G SFP LC BX 10-U Xcvr (JD098B)		YES	R6708P09
HPE X120 1G SFP LC BX 10-D Xcvr (JD099B)		YES	R6708P09
HPE X170 1G SFP LC LH70 1470 Xcvr (JD113A)		YES	R6708P09
HPE X170 1G SFP LC LH70 1490 Xcvr (JD114A)		YES	R6708P09
HPE X170 1G SFP LC LH70 1510 Xcvr (JD115A)		YES	R6708P09
HPE X170 1G SFP LC LH70 1530 Xcvr (JD116A)		YES	R6708P09
HPE X170 1G SFP LC LH70 1550 Xcvr (JD109A)		YES	R6708P09

Switch or module	Transceiver module (Product code)	Minimum software release	
		DDM support	Release version
	HPE X170 1G SFP LC LH70 1570 Xcvr (JD110A)	YES	R6708P09
	HPE X170 1G SFP LC LH70 1590 Xcvr (JD111A)	YES	R6708P09
	HPE X170 1G SFP LC LH70 1610 Xcvr (JD112A)	YES	R6708P09
	HPE X115 100M SFP LC FX Xcvr (JD102B)	YES	R6708P09
	HPE X110 100M SFP LC LX Xcvr (JD120B)	YES	R6708P09
	HPE X110 100M SFP LC LH40 Xcvr (JD090A)	YES	R6708P09
	HPE X110 100M SFP LC LH80 Xcvr (JD091A)	YES	R6708P09
	HPE 3600 Switch SFP Stacking Kit (JD324B)	NO	R6708P09
HPE FlexNetwork 7500 24-port GbE SFP Enhanced Module(JD231A)	HPE X120 1G SFP RJ45 T Xcvr (JD089B)	YES	R6708P09
	HPE X120 1G SFP LC SX Xcvr (JD118B)	YES	R6708P09
	HPE X120 1G SFP LC LX Xcvr (JD119B)	YES	R6708P09
	HPE X120 1G SFP LC LH100 Xcvr (JD103A)	YES	R6708P09
	HPE X120 1G SFP LC BX 10-U Xcvr (JD098B)	YES	R6708P09
	HPE X120 1G SFP LC BX 10-D Xcvr (JD099B)	YES	R6708P09
	HPE X170 1G SFP LC LH70 1470 Xcvr (JD113A)	YES	R6708P09
	HPE X170 1G SFP LC LH70 1490 Xcvr (JD114A)	YES	R6708P09
	HPE X170 1G SFP LC LH70 1510 Xcvr (JD115A)	YES	R6708P09
	HPE X170 1G SFP LC LH70 1530 Xcvr (JD116A)	YES	R6708P09
	HPE X170 1G SFP LC LH70 1550 Xcvr (JD109A)	YES	R6708P09
	HPE X170 1G SFP LC LH70 1570 Xcvr (JD110A)	YES	R6708P09
	HPE X170 1G SFP LC LH70 1590 Xcvr (JD111A)	YES	R6708P09
	HPE X170 1G SFP LC LH70 1610 Xcvr (JD112A)	YES	R6708P09
	HPE X115 100M SFP LC FX Xcvr (JD102B)	YES	R6708P09
	HPE X110 100M SFP LC LX Xcvr (JD120B)	YES	R6708P09
	HPE X110 100M SFP LC LH40 Xcvr (JD090A)	YES	R6708P09
	HPE X110 100M SFP LC LH80 Xcvr (JD091A)	YES	R6708P09
HPE 3600 Switch SFP Stacking Kit (JD324B)	NO	R6708P09	
HPE FlexNetwork 7500 24-port GbE SFP with 8 Combo SD Module (JD234A)	HPE X120 1G SFP RJ45 T Xcvr (JD089B)	YES	R6708P09
	HPE X120 1G SFP LC SX Xcvr (JD118B)	YES	R6708P09
	HPE X120 1G SFP LC LX Xcvr (JD119B)	YES	R6708P09
	HPE X120 1G SFP LC LH100 Xcvr (JD103A)	YES	R6708P09
	HPE X120 1G SFP LC BX 10-U Xcvr (JD098B)	YES	R6708P09
	HPE X120 1G SFP LC BX 10-D Xcvr (JD099B)	YES	R6708P09
	HPE X170 1G SFP LC LH70 1470 Xcvr (JD113A)	YES	R6708P09

Switch or module	Transceiver module (Product code)	Minimum software release	
		DDM support	Release version
	HPE X170 1G SFP LC LH70 1490 Xcvr (JD114A)	YES	R6708P09
	HPE X170 1G SFP LC LH70 1510 Xcvr (JD115A)	YES	R6708P09
	HPE X170 1G SFP LC LH70 1530 Xcvr (JD116A)	YES	R6708P09
	HPE X170 1G SFP LC LH70 1550 Xcvr (JD109A)	YES	R6708P09
	HPE X170 1G SFP LC LH70 1570 Xcvr (JD110A)	YES	R6708P09
	HPE X170 1G SFP LC LH70 1590 Xcvr (JD111A)	YES	R6708P09
	HPE X170 1G SFP LC LH70 1610 Xcvr (JD112A)	YES	R6708P09
	HPE X115 100M SFP LC FX Xcvr (JD102B)	YES	R6708P09
	HPE X110 100M SFP LC LX Xcvr (JD120B)	YES	R6708P09
	HPE X110 100M SFP LC LH40 Xcvr (JD090A)	YES	R6708P09
	HPE X110 100M SFP LC LH80 Xcvr (JD091A)	YES	R6708P09
	HPE 3600 Switch SFP Stacking Kit (JD324B)	NO	R6708P09
	HPE FlexNetwork 7500 24-port GbE SFP with 8 Combo and 2-port 10GbE XFP SD Module (JD230A)	HPE X120 1G SFP RJ45 T Xcvr (JD089B)	YES
HPE X120 1G SFP LC SX Xcvr (JD118B)		YES	R6708P09
HPE X120 1G SFP LC LX Xcvr (JD119B)		YES	R6708P09
HPE X120 1G SFP LC LH100 Xcvr (JD103A)		YES	R6708P09
HPE X120 1G SFP LC BX 10-U Xcvr (JD098B)		YES	R6708P09
HPE X120 1G SFP LC BX 10-D Xcvr (JD099B)		YES	R6708P09
HPE X170 1G SFP LC LH70 1470 Xcvr (JD113A)		YES	R6708P09
HPE X170 1G SFP LC LH70 1490 Xcvr (JD114A)		YES	R6708P09
HPE X170 1G SFP LC LH70 1510 Xcvr (JD115A)		YES	R6708P09
HPE X170 1G SFP LC LH70 1530 Xcvr (JD116A)		YES	R6708P09
HPE X170 1G SFP LC LH70 1550 Xcvr (JD109A)		YES	R6708P09
HPE X170 1G SFP LC LH70 1570 Xcvr (JD110A)		YES	R6708P09
HPE X170 1G SFP LC LH70 1590 Xcvr (JD111A)		YES	R6708P09
HPE X170 1G SFP LC LH70 1610 Xcvr (JD112A)		YES	R6708P09
HPE X115 100M SFP LC FX Xcvr (JD102B)		YES	R6708P09
HPE X110 100M SFP LC LX Xcvr (JD120B)		YES	R6708P09
HPE X110 100M SFP LC LH40 Xcvr (JD090A)		YES	R6708P09
HPE X110 100M SFP LC LH80 Xcvr (JD091A)		YES	R6708P09
HPE 3600 Switch SFP Stacking Kit (JD324B)		NO	R6708P09

HPE 6127XLG Blade switch series minimum software version requirements

Switch or module	Transceiver module (Product code)	Minimum software release	
		DDM support	Release version
HPE 6127XLG Ethernet Blade Switch (787635-B21)	HPE X120 1G SFP RJ45 T Xcvr (JD089B)	YES	R2418P01
	HPE X120 1G SFP LC SX Xcvr (JD118B)	YES	R2418P01
	HPE X120 1G SFP LC LX Xcvr (JD119B)	YES	R2418P01
	HPE X120 1G SFP LC LH100 Xcvr (JD103A)	YES	R2418P01
HPE 6127XLG Ethernet Blade Switch with TAA (787635-B22)	HPE X120 1G SFP RJ45 T Xcvr (JD089B)	YES	R2418P01
	HPE X120 1G SFP LC SX Xcvr (JD118B)	YES	R2418P01
	HPE X120 1G SFP LC LX Xcvr (JD119B)	YES	R2418P01
	HPE X120 1G SFP LC LH100 Xcvr (JD103A)	YES	R2418P01

HPE 6125XLG Blade switch series minimum software version requirements

Switch or module	Transceiver module (Product code)	Minimum software release	
		DDM support	Release version
HPE 6125XLG Blade Switch (711307-B21)	HPE X120 1G SFP RJ45 T Xcvr (JD089B)	YES	R2418P01
	HPE X120 1G SFP LC SX Xcvr (JD118B)	YES	R2418P01
	HPE X120 1G SFP LC LX Xcvr (JD119B)	YES	R2418P01
	HPE X120 1G SFP LC LH100 Xcvr (JD103A)	YES	R2418P01
HPE 6125XLG Blade Switch with TAA (737230-B21)	HPE X120 1G SFP RJ45 T Xcvr (JD089B)	YES	R2418P01
	HPE X120 1G SFP LC SX Xcvr (JD118B)	YES	R2418P01
	HPE X120 1G SFP LC LX Xcvr (JD119B)	YES	R2418P01
	HPE X120 1G SFP LC LH100 Xcvr (JD103A)	YES	R2418P01

HPE FlexFabric 5980 switch series minimum software version requirements

Switch or module	Transceiver module (Product code)	Minimum software release	
		DDM support	Release version
HPE FlexFabric 5980 48SFP+ 6QSFP28 Switch (JQ026A)	HPE X120 1G SFP RJ45 T Xcvr (JD089B)	YES	R2708
	HPE X120 1G SFP LC SX Xcvr (JD118B)	YES	R2708
	HPE X120 1G SFP LC LX Xcvr (JD119B)	YES	R2708
	HPE X120 1G SFP LC LH100 Xcvr (JD103A)	YES	R2708

HPE FlexFabric 5950 switch series minimum software version requirements

Switch or module	Transceiver module (Product code)	Minimum software release	
		DDM support	Release version
HPE FlexFabric 5950 32QSFP28 Switch (JH321A)	HPE X120 1G SFP RJ45 T Xcvr (JD089B)	YES	R6125
	HPE X120 1G SFP LC SX Xcvr (JD118B)	YES	R6125
	HPE X120 1G SFP LC LX Xcvr (JD119B)	YES	R6125
	HPE X120 1G SFP LC LH100 Xcvr (JD103A)	YES	R6125
HPE FlexFabric 5950 32QSFP28 TAA-compliant Switch (JH322A)	HPE X120 1G SFP RJ45 T Xcvr (JD089B)	YES	R6125
	HPE X120 1G SFP LC SX Xcvr (JD118B)	YES	R6125
	HPE X120 1G SFP LC LX Xcvr (JD119B)	YES	R6125
	HPE X120 1G SFP LC LH100 Xcvr (JD103A)	YES	R6125
HPE FlexFabric 5950 48SFP28 8QSFP28 Switch (JH402A)	HPE X120 1G SFP RJ45 T Xcvr (JD089B)	YES	R6125
	HPE X120 1G SFP LC SX Xcvr (JD118B)	YES	R6125
	HPE X120 1G SFP LC LX Xcvr (JD119B)	YES	R6125
	HPE X120 1G SFP LC LH100 Xcvr (JD103A)	YES	R6125
HPE FlexFabric 5950 4-slot Switch (JH404A)	HPE X120 1G SFP RJ45 T Xcvr (JD089B)	YES	R6125
	HPE X120 1G SFP LC SX Xcvr (JD118B)	YES	R6125
	HPE X120 1G SFP LC LX Xcvr (JD119B)	YES	R6125
	HPE X120 1G SFP LC LH100 Xcvr (JD103A)	YES	R6125
HPE LSWM124TG2H Interface Module (JH450A)	HPE X120 1G SFP RJ45 T Xcvr (JD089B)	YES	R6125
	HPE X120 1G SFP LC SX Xcvr (JD118B)	YES	R6125
	HPE X120 1G SFP LC LX Xcvr (JD119B)	YES	R6125
	HPE X120 1G SFP LC LH100 Xcvr (JD103A)	YES	R6125

HPE FlexFabric 5945 switch series minimum software version requirements

Switch or module	Transceiver module (Product code)	Minimum software release	
		DDM support	Release version
HPE FlexFabric 5945 4-slot Switch (JQ076A)	HPE X120 1G SFP RJ45 T Xcvr (JD089B)	YES	R6508
	HPE X120 1G SFP LC SX Xcvr (JD118B)	YES	R6508
	HPE X120 1G SFP LC LX Xcvr (JD119B)	YES	R6508
	HPE X120 1G SFP LC LH100 Xcvr (JD103A)	YES	R6508
HPE FlexFabric 5945 48SFP28 8QSFP28 Switch (JQ074A)	HPE X120 1G SFP RJ45 T Xcvr (JD089B)	YES	R6508
	HPE X120 1G SFP LC SX Xcvr (JD118B)	YES	R6508
	HPE X120 1G SFP LC LX Xcvr (JD119B)	YES	R6508
	HPE X120 1G SFP LC LH100 Xcvr (JD103A)	YES	R6508
HPE FlexFabric 5945 2-slot Switch(JQ075A)	HPE X120 1G SFP RJ45 T Xcvr (JD089B)	YES	R6553
	HPE X120 1G SFP LC SX Xcvr (JD118B)	YES	R6553
	HPE X120 1G SFP LC LX Xcvr (JD119B)	YES	R6553
	HPE X120 1G SFP LC LH100 Xcvr (JD103A)	YES	R6553
HPE FlexFabric 5945 32QSFP28 Switch (JQ077A)	HPE X120 1G SFP RJ45 T Xcvr (JD089B)	YES	R6553
	HPE X120 1G SFP LC SX Xcvr (JD118B)	YES	R6553
	HPE X120 1G SFP LC LX Xcvr (JD119B)	YES	R6553
	HPE X120 1G SFP LC LH100 Xcvr (JD103A)	YES	R6553

HPE FlexFabric 5940 switch series minimum software version requirements

Switch or module	Transceiver module (Product code)	Minimum software release	
		DDM support	Release version
HPE FlexFabric 5940 48SFP+ 6QSFP+ Switch (JH395A)	HPE X120 1G SFP RJ45 T Xcvr (JD089B)	YES	R2509P02
	HPE X120 1G SFP LC SX Xcvr (JD118B)	YES	R2509P02
	HPE X120 1G SFP LC LX Xcvr (JD119B)	YES	R2509P02
	HPE X120 1G SFP LC LH100 Xcvr (JD103A)	YES	R2509P02
HPE FlexFabric 5940 48SFP+ 6QSFP28 Switch (JH390A)	HPE X120 1G SFP RJ45 T Xcvr (JD089B)	YES	R2509P02
	HPE X120 1G SFP LC SX Xcvr (JD118B)	YES	R2509P02
	HPE X120 1G SFP LC LX Xcvr (JD119B)	YES	R2509P02

Switch or module	Transceiver module (Product code)	Minimum software release	
		DDM support	Release version
	HPE X120 1G SFP LC LH100 Xcvr (JD103A)	YES	R2509P02
HPE FlexFabric 5940 48XGT 6QSFP28 Switch (JH391A)	HPE X120 1G SFP RJ45 T Xcvr (JD089B)	YES	R2509P02
	HPE X120 1G SFP LC SX Xcvr (JD118B)	YES	R2509P02
	HPE X120 1G SFP LC LX Xcvr (JD119B)	YES	R2509P02
	HPE X120 1G SFP LC LH100 Xcvr (JD103A)	YES	R2509P02
HPE FlexFabric 5940 48SFP+ 6QSFP28 TAA-compliant Switch (JH392A)	HPE X120 1G SFP RJ45 T Xcvr (JD089B)	YES	R2509P02
	HPE X120 1G SFP LC SX Xcvr (JD118B)	YES	R2509P02
	HPE X120 1G SFP LC LX Xcvr (JD119B)	YES	R2509P02
	HPE X120 1G SFP LC LH100 Xcvr (JD103A)	YES	R2509P02
HPE FlexFabric 5940 48XGT 6QSFP28 TAA-compliant Switch (JH393A)	HPE X120 1G SFP RJ45 T Xcvr (JD089B)	YES	R2509P02
	HPE X120 1G SFP LC SX Xcvr (JD118B)	YES	R2509P02
	HPE X120 1G SFP LC LX Xcvr (JD119B)	YES	R2509P02
	HPE X120 1G SFP LC LH100 Xcvr (JD103A)	YES	R2509P02
HPE FlexFabric 5940 48XGT 6QSFP+ Switch (JH394A)	HPE X120 1G SFP RJ45 T Xcvr (JD089B)	YES	R2509P02
	HPE X120 1G SFP LC SX Xcvr (JD118B)	YES	R2509P02
	HPE X120 1G SFP LC LX Xcvr (JD119B)	YES	R2509P02
	HPE X120 1G SFP LC LH100 Xcvr (JD103A)	YES	R2509P02

HPE FlexFabric 5930 switch series minimum software version requirements

Switch or module	Transceiver module (Product code)	Minimum software release	
		DDM support	Release version
HPE 5930 24-port SFP+ and 2-port QSFP+ with MACsec Module (JH181A)	HPE X120 1G SFP RJ45 T Xcvr (JD089B)	YES	R2418P01
	HPE X120 1G SFP LC SX Xcvr (JD118B)	YES	R2418P01
	HPE X120 1G SFP LC LX Xcvr (JD119B)	YES	R2418P01
	HPE X120 1G SFP LC LH100 Xcvr (JD103A)	YES	R2418P01
HPE 5930 24-port Converged Port and 2-port QSFP+ Module (JH184A)	HPE X120 1G SFP RJ45 T Xcvr (JD089B)	YES	R2418P01
	HPE X120 1G SFP LC SX Xcvr (JD118B)	YES	R2418P01
	HPE X120 1G SFP LC LX Xcvr (JD119B)	YES	R2418P01
	HPE X120 1G SFP LC LH100 Xcvr (JD103A)	YES	R2418P01
HPE 5930 24-port SFP+ and 2-port	HPE X120 1G SFP RJ45 T Xcvr (JD089B)	YES	R2418P01
	HPE X120 1G SFP LC SX Xcvr (JD118B)	YES	R2418P01

Switch or module	Transceiver module (Product code)	Minimum software release	
		DDM support	Release version
QSFP+ Module (JH180A)	HPE X120 1G SFP LC LX Xcvr (JD119B)	YES	R2418P01
	HPE X120 1G SFP LC LH100 Xcvr (JD103A)	YES	R2418P01

HPE FlexFabric 5900 switch series minimum software version requirements

Switch or module	Transceiver module (Product code)	Minimum software release	
		DDM support	Release version
HPE FlexFabric 5900AF 48XG 4QSFP+ Switch (JC772A)	HPE X120 1G SFP RJ45 T Xcvr (JD089B)	YES	R2418P01
	HPE X120 1G SFP LC SX Xcvr (JD118B)	YES	R2418P01
	HPE X120 1G SFP LC LX Xcvr (JD119B)	YES	R2418P01
	HPE X120 1G SFP LC LH100 Xcvr (JD103A)	YES	R2418P01
HPE FlexFabric 5900AF 48XG 4QSFP+ TAA-compliant Switch (JG554A)	HPE X120 1G SFP RJ45 T Xcvr (JD089B)	YES	R2418P01
	HPE X120 1G SFP LC SX Xcvr (JD118B)	YES	R2418P01
	HPE X120 1G SFP LC LX Xcvr (JD119B)	YES	R2418P01
	HPE X120 1G SFP LC LH100 Xcvr (JD103A)	YES	R2418P01
HPE FlexFabric 5900AF 48G 4XG 2QSFP+ Switch (JG510A)	HPE X120 1G SFP RJ45 T Xcvr (JD089B)	YES	R2418P01
	HPE X120 1G SFP LC SX Xcvr (JD118B)	YES	R2418P01
	HPE X120 1G SFP LC LX Xcvr (JD119B)	YES	R2418P01
	HPE X120 1G SFP LC LH100 Xcvr (JD103A)	YES	R2418P01
HPE FlexFabric 5900AF 48G 4XG 2QSFP+ TAA-compliant Switch (JH038A)	HPE X120 1G SFP RJ45 T Xcvr (JD089B)	YES	R2418P01
	HPE X120 1G SFP LC SX Xcvr (JD118B)	YES	R2418P01
	HPE X120 1G SFP LC LX Xcvr (JD119B)	YES	R2418P01
	HPE X120 1G SFP LC LH100 Xcvr (JD103A)	YES	R2418P01
HPE FlexFabric 5900CP 48XG 4QSFP+ Switch (JG838A)	HPE X120 1G SFP RJ45 T Xcvr (JD089B)	YES	R2418P01
	HPE X120 1G SFP LC SX Xcvr (JD118B)	YES	R2418P01
	HPE X120 1G SFP LC LX Xcvr (JD119B)	YES	R2418P01
	HPE X120 1G SFP LC LH100 Xcvr (JD103A)	YES	R2418P01
HPE FlexFabric 5900CP 48XG 4QSFP+ TAA-compliant Switch (JH036A)	HPE X120 1G SFP RJ45 T Xcvr (JD089B)	YES	R2418P01
	HPE X120 1G SFP LC SX Xcvr (JD118B)	YES	R2418P01
	HPE X120 1G SFP LC LX Xcvr (JD119B)	YES	R2418P01
	HPE X120 1G SFP LC LH100 Xcvr (JD103A)	YES	R2418P01

HPE FlexFabric 5830 switch series minimum software version requirements

Switch or module	Transceiver module (Product code)	Minimum software release	
		DDM support	Release version
HP A5830AF-48G Switch w/1 Interface Slot (JC691A)	HPE X120 1G SFP RJ45 T Xcvr (JD089B)	YES	R1118P09
	HPE X120 1G SFP LC SX Xcvr (JD118B)	YES	R1118P09
	HPE X120 1G SFP LC LX Xcvr (JD119B)	YES	R1118P09
	HPE X120 1G SFP LC LH100 Xcvr (JD103A)	YES	R1118P09
	HPE X120 1G SFP LC BX 10-U Xcvr (JD098B)	YES	R1118P09
	HPE X120 1G SFP LC BX 10-D Xcvr (JD099B)	YES	R1118P09
	HPE X170 1G SFP LC LH70 1470 Xcvr (JD113A)	YES	R1118P09
	HPE X170 1G SFP LC LH70 1490 Xcvr (JD114A)	YES	R1118P09
	HPE X170 1G SFP LC LH70 1510 Xcvr (JD115A)	YES	R1118P09
	HPE X170 1G SFP LC LH70 1530 Xcvr (JD116A)	YES	R1118P09
	HPE X170 1G SFP LC LH70 1550 Xcvr (JD109A)	YES	R1118P09
	HPE X170 1G SFP LC LH70 1570 Xcvr (JD110A)	YES	R1118P09
	HPE X170 1G SFP LC LH70 1590 Xcvr (JD111A)	YES	R1118P09
	HPE X170 1G SFP LC LH70 1610 Xcvr (JD112A)	YES	R1118P09
	HPE X115 100M SFP LC FX Xcvr (JD102B)	YES	R1118P09
	HPE X110 100M SFP LC LX Xcvr (JD120B)	YES	R1118P09
	HPE X110 100M SFP LC LH40 Xcvr (JD090A)	YES	R1118P09
	HPE X110 100M SFP LC LH80 Xcvr (JD091A)	YES	R1118P09
	HPE 3600 Switch SFP Stacking Kit (JD324B)	NO	R1118P09
	HP A5830AF-96G Switch (JC694A)	HPE X120 1G SFP RJ45 T Xcvr (JD089B)	YES
HPE X120 1G SFP LC SX Xcvr (JD118B)		YES	R1118P09
HPE X120 1G SFP LC LX Xcvr (JD119B)		YES	R1118P09
HPE X120 1G SFP LC LH100 Xcvr (JD103A)		YES	R1118P09
HPE X120 1G SFP LC BX 10-U Xcvr (JD098B)		YES	R1118P09
HPE X120 1G SFP LC BX 10-D Xcvr (JD099B)		YES	R1118P09
HPE X170 1G SFP LC LH70 1470 Xcvr (JD113A)		YES	R1118P09
HPE X170 1G SFP LC LH70 1490 Xcvr (JD114A)		YES	R1118P09
HPE X170 1G SFP LC LH70 1510 Xcvr (JD115A)		YES	R1118P09
HPE X170 1G SFP LC LH70 1530 Xcvr (JD116A)		YES	R1118P09
HPE X170 1G SFP LC LH70 1550 Xcvr (JD109A)		YES	R1118P09
HPE X170 1G SFP LC LH70 1570 Xcvr (JD110A)		YES	R1118P09

Switch or module	Transceiver module (Product code)	Minimum software release	
		DDM support	Release version
	HPE X170 1G SFP LC LH70 1590 Xcvr (JD111A)	YES	R1118P09
	HPE X170 1G SFP LC LH70 1610 Xcvr (JD112A)	YES	R1118P09

HPE FlexFabric 5710 switch series minimum software version requirements

Switch or module	Transceiver module (Product code)	Minimum software release	
		DDM support	Release version
HPE FlexFabric 5710 48SFP+ 6QSFP+ or 2QSFP28 Switch (JL585A)	HPE X120 1G SFP RJ45 T Xcvr (JD089B)	YES	R2612
	HPE X120 1G SFP LC SX Xcvr (JD118B)	YES	R2612
	HPE X120 1G SFP LC LX Xcvr (JD119B)	YES	R2612
	HPE X120 1G SFP LC LH100 Xcvr (JD103A)	YES	R2612
HPE FlexFabric 5710 48XGT 6QSFP+ or 2QSFP28 Switch (JL586A)	HPE X120 1G SFP RJ45 T Xcvr (JD089B)	YES	R2612
	HPE X120 1G SFP LC SX Xcvr (JD118B)	YES	R2612
	HPE X120 1G SFP LC LX Xcvr (JD119B)	YES	R2612
	HPE X120 1G SFP LC LH100 Xcvr (JD103A)	YES	R2612
HPE FlexFabric 5710 24SFP+ 6QSFP+ or 2QSFP28 Switch (JL587A)	HPE X120 1G SFP RJ45 T Xcvr (JD089B)	YES	R2612P01
	HPE X120 1G SFP LC SX Xcvr (JD118B)	YES	R2612P01
	HPE X120 1G SFP LC LX Xcvr (JD119B)	YES	R2612P01
	HPE X120 1G SFP LC LH100 Xcvr (JD103A)	YES	R2612P01
HPE FlexFabric 5710 24XGT+ 6QSFP+ or 2QSFP28 Switch (JL689A)	HPE X120 1G SFP RJ45 T Xcvr (JD089B)	YES	R2612P03
	HPE X120 1G SFP LC SX Xcvr (JD118B)	YES	R2612P03
	HPE X120 1G SFP LC LX Xcvr (JD119B)	YES	R2612P03
	HPE X120 1G SFP LC LH100 Xcvr (JD103A)	YES	R2612P03

HPE FlexFabric 5700 switch series minimum software version requirements

Switch or module	Transceiver module (Product code)	Minimum software release	
		DDM support	Release version
HPE FlexFabric 5700 40XG 2QSFP+ Switch (JG896A)	HPE X120 1G SFP RJ45 T Xcvr (JD089B)	YES	R2418P01
	HPE X120 1G SFP LC SX Xcvr (JD118B)	YES	R2418P01
	HPE X120 1G SFP LC LX Xcvr (JD119B)	YES	R2418P01
	HPE X120 1G SFP LC LH100 Xcvr (JD103A)	YES	R2418P01
HPE FlexFabric 5700 40XG 2QSFP+ TAA-compliant Switch (JG897A)	HPE X120 1G SFP RJ45 T Xcvr (JD089B)	YES	R2418P01
	HPE X120 1G SFP LC SX Xcvr (JD118B)	YES	R2418P01
	HPE X120 1G SFP LC LX Xcvr (JD119B)	YES	R2418P01
	HPE X120 1G SFP LC LH100 Xcvr (JD103A)	YES	R2418P01
HPE FlexFabric 5700 48G 4XG 2QSFP+ Switch (JG894A)	HPE X120 1G SFP RJ45 T Xcvr (JD089B)	YES	R2418P01
	HPE X120 1G SFP LC SX Xcvr (JD118B)	YES	R2418P01
	HPE X120 1G SFP LC LX Xcvr (JD119B)	YES	R2418P01
	HPE X120 1G SFP LC LH100 Xcvr (JD103A)	YES	R2418P01
HPE FlexFabric 5700 48G 4XG 2QSFP+ TAA-compliant Switch (JG895A)	HPE X120 1G SFP RJ45 T Xcvr (JD089B)	YES	R2418P01
	HPE X120 1G SFP LC SX Xcvr (JD118B)	YES	R2418P01
	HPE X120 1G SFP LC LX Xcvr (JD119B)	YES	R2418P01
	HPE X120 1G SFP LC LH100 Xcvr (JD103A)	YES	R2418P01
HPE FlexFabric 5700 32XGT 8XG 2QSFP+ Switch (JG898A)	HPE X120 1G SFP RJ45 T Xcvr (JD089B)	YES	R2418P01
	HPE X120 1G SFP LC SX Xcvr (JD118B)	YES	R2418P01
	HPE X120 1G SFP LC LX Xcvr (JD119B)	YES	R2418P01
	HPE X120 1G SFP LC LH100 Xcvr (JD103A)	YES	R2418P01
HPE FlexFabric 5700 32XGT 8XG 2QSFP+ TAA-compliant Switch (JG899A)	HPE X120 1G SFP RJ45 T Xcvr (JD089B)	YES	R2418P01
	HPE X120 1G SFP LC SX Xcvr (JD118B)	YES	R2418P01
	HPE X120 1G SFP LC LX Xcvr (JD119B)	YES	R2418P01
	HPE X120 1G SFP LC LH100 Xcvr (JD103A)	YES	R2418P01

Document conventions and icons

Conventions

This section describes the conventions used in the documentation.

Port numbering in examples

The port numbers in this document are for illustration only and might be unavailable on your device.





Command conventions

Convention	Description
Boldface	Bold text represents commands and keywords that you enter literally as shown.
<i>Italic</i>	<i>Italic</i> text represents arguments that you replace with actual values.
[]	Square brackets enclose syntax choices (keywords or arguments) that are optional.
{ x y ... }	Braces enclose a set of required syntax choices separated by vertical bars, from which you select one.
[x y ...]	Square brackets enclose a set of optional syntax choices separated by vertical bars, from which you select one or none.
{ x y ... } *	Asterisk marked braces enclose a set of required syntax choices separated by vertical bars, from which you select at least one.
[x y ...] *	Asterisk marked square brackets enclose optional syntax choices separated by vertical bars, from which you select one choice, multiple choices, or none.
&<1-n>	The argument or keyword and argument combination before the ampersand (&) sign can be entered 1 to n times.
#	A line that starts with a pound (#) sign is comments.













GUI conventions

Convention	Description
Boldface	Window names, button names, field names, and menu items are in Boldface. For example, the New User window appears; click OK .
>	Multi-level menus are separated by angle brackets. For example, File > Create > Folder .

Symbols

Convention	Description
 WARNING!	An alert that calls attention to important information that if not understood or followed can result in personal injury.
 CAUTION:	An alert that calls attention to important information that if not understood or followed can result in data loss, data corruption, or damage to hardware or software.
 IMPORTANT:	An alert that calls attention to essential information.
NOTE:	An alert that contains additional or supplementary information.
 TIP:	An alert that provides helpful information.

Network topology icons

Convention	Description
	Represents a generic network device, such as a router, switch, or firewall.
	Represents a routing-capable device, such as a router or Layer 3 switch.
	Represents a generic switch, such as a Layer 2 or Layer 3 switch, or a router that supports Layer 2 forwarding and other Layer 2 features.
	Represents an access controller, a unified wired-WLAN module, or the access controller engine on a unified wired-WLAN switch.
	Represents an access point.
	Represents a wireless terminator unit.
	Represents a wireless terminator.
	Represents a mesh access point.
	Represents omnidirectional signals.
	Represents directional signals.
	Represents a security product, such as a firewall, UTM, multiservice security gateway, or load balancing device.
	Represents a security card, such as a firewall, load balancing, NetStream, SSL VPN, IPS, or ACG card.

Support and other resources

Accessing Hewlett Packard Enterprise Support

- For live assistance, go to the Contact Hewlett Packard Enterprise Worldwide website:
www.hpe.com/assistance
- To access documentation and support services, go to the Hewlett Packard Enterprise Support Center website:
www.hpe.com/support/hpesc

Information to collect

- Technical support registration number (if applicable)
- Product name, model or version, and serial number
- Operating system name and version
- Firmware version
- Error messages
- Product-specific reports and logs
- Add-on products or components
- Third-party products or components

Accessing updates

- Some software products provide a mechanism for accessing software updates through the product interface. Review your product documentation to identify the recommended software update method.
- To download product updates, go to either of the following:
 - Hewlett Packard Enterprise Support Center **Get connected with updates** page:
www.hpe.com/support/e-updates
 - Software Depot website:
www.hpe.com/support/softwaredepot
- To view and update your entitlements, and to link your contracts, Care Packs, and warranties with your profile, go to the Hewlett Packard Enterprise Support Center **More Information on Access to Support Materials** page:
www.hpe.com/support/AccessToSupportMaterials

ⓘ **IMPORTANT:**

Access to some updates might require product entitlement when accessed through the Hewlett Packard Enterprise Support Center. You must have an HP Passport set up with relevant entitlements.

Websites

Website	Link
Networking websites	
Hewlett Packard Enterprise Information Library for Networking	www.hpe.com/networking/resourcefinder
Hewlett Packard Enterprise Networking website	www.hpe.com/info/networking
Hewlett Packard Enterprise My Networking website	www.hpe.com/networking/support
Hewlett Packard Enterprise My Networking Portal	www.hpe.com/networking/mynetworking
Hewlett Packard Enterprise Networking Warranty	www.hpe.com/networking/warranty
General websites	
Hewlett Packard Enterprise Information Library	www.hpe.com/info/enterprise/docs
Hewlett Packard Enterprise Support Center	www.hpe.com/support/hpesc
Hewlett Packard Enterprise Support Services Central	ssc.hpe.com/portal/site/ssc/
Contact Hewlett Packard Enterprise Worldwide	www.hpe.com/assistance
Subscription Service/Support Alerts	www.hpe.com/support/e-updates
Software Depot	www.hpe.com/support/softwaredepot
Customer Self Repair (not applicable to all devices)	www.hpe.com/support/selfrepair
Insight Remote Support (not applicable to all devices)	www.hpe.com/info/insightremotesupport/docs

Customer self repair

Hewlett Packard Enterprise customer self repair (CSR) programs allow you to repair your product. If a CSR part needs to be replaced, it will be shipped directly to you so that you can install it at your convenience. Some parts do not qualify for CSR. Your Hewlett Packard Enterprise authorized service provider will determine whether a repair can be accomplished by CSR.

For more information about CSR, contact your local service provider or go to the CSR website:

www.hpe.com/support/selfrepair

Remote support

Remote support is available with supported devices as part of your warranty, Care Pack Service, or contractual support agreement. It provides intelligent event diagnosis, and automatic, secure submission of hardware event notifications to Hewlett Packard Enterprise, which will initiate a fast and accurate resolution based on your product's service level. Hewlett Packard Enterprise strongly recommends that you register your device for remote support.

For more information and device support details, go to the following website:

www.hpe.com/info/insightremotesupport/docs

Documentation feedback

Hewlett Packard Enterprise is committed to providing documentation that meets your needs. To help us improve the documentation, send any errors, suggestions, or comments to Documentation Feedback (docsfeedback@hpe.com). When submitting your feedback, include the document title, part number, edition, and publication date located on the front cover of the document. For online help content, include the product name, product version, help edition, and publication date located on the legal notices page.

Index

[A](#) [C](#) [D](#) [G](#) [L](#) [N](#)

A

- About copper transceiver modules, [4](#)
- About optical transceiver modules, [1](#)
- Accessing Hewlett Packard Enterprise Support, [45](#)
- Accessing updates, [45](#)

C

- Conventions, [43](#)

D

- Data center switching minimum software release requirements, [14](#)

G

- Gigabit BIDI optical transceiver modules, [8](#)
- Gigabit CWDM optical transceiver modules, [9](#)
- Gigabit Ethernet transceiver modules, [12](#)
- Gigabit SFP copper cables, [11](#)
- Gigabit SFP copper transceiver modules, [11](#)
- Gigabit SFP optical transceiver modules, [5](#)

L

- List of Gigabit transceiver modules and network cables, [1](#)

N

- Network topology icons, [44](#)