

Toepassingsaanwijzing

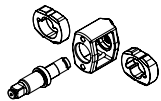
# Pneumatische slag- schroevendraaiers



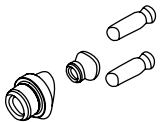
**9012 SPC**  
**9012-1 SPC**  
**9013 SPC**



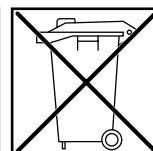
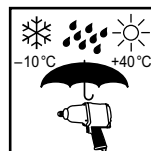
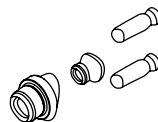
**9012-1 SPC**



**9012 SPC**

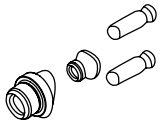
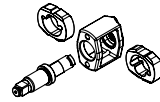
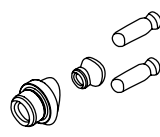











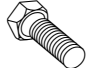


**9013 SPC**



Oorspronkelijke taal Duits

**Technische gegevens:..**

<b>HAZET</b> No.		<b>9012 SPC</b>	<b>9012-1 SPC</b>	<b>9013 SPC</b>
				
		<b>12<sup>5</sup> 1/2"</b>	<b>12<sup>5</sup> 1/2"</b>	<b>20 3/4"</b>
		6,3 mm = 1/4"	6,3 mm = 1/4"	10 mm = 3/8"
	Nm	<b>461</b>	<b>90</b>	<b>1490</b>
	Nm	<b>670</b>	<b>670</b>	<b>1800</b>
	tpm	<b>160</b>	<b>160</b>	<b>160</b>
	g	<b>2500</b>	<b>2500</b>	<b>5400</b>
	Ø mm	<b>10</b>	<b>10</b>	<b>10</b>
	l/min	<b>113</b>	<b>113</b>	<b>176</b>
	bar.	<b>6,3</b>	<b>6,3</b>	<b>6,3</b>
	dB(A)	<b>Lp A 87</b>	<b>Lp A 88</b>	<b>Lp A 90</b>
	dB(A)	<b>Lp W 97</b>	<b>Lp W 98</b>	<b>Lp W 105</b>
	m/s <sup>2</sup>	<b>2,55</b>	<b>3,4</b>	<b>6,1</b>
		<b>M 16</b>	<b>M 16</b>	<b>M 30</b>



**HAZET** Pneumatische slagschroevendraaiers voor het aandraaien en losdraaien van schroefverbindingen, zeer robuuste uitvoering.



Neem per se de bijgevoegde veiligheidsvoorschriften in acht voor pneumatische gereedschappen van **HAZET!**

**Leveringsomvang:** Pneumatische slagschroevendraaier, verbindingstekker, nominale breedte 7,2