

EC DECLARATION OF CONFORMITY

Address of places of manufacture and storage

CHENGHAI DISTRICT, SHANTOU CITY,
GUANGDONG PROVINCE, CHINA

We SHANTOU QIYI PLASTIC PRODUCTS FACTORY



**declared that the goods below are
in accordance with the following Directive(s):**

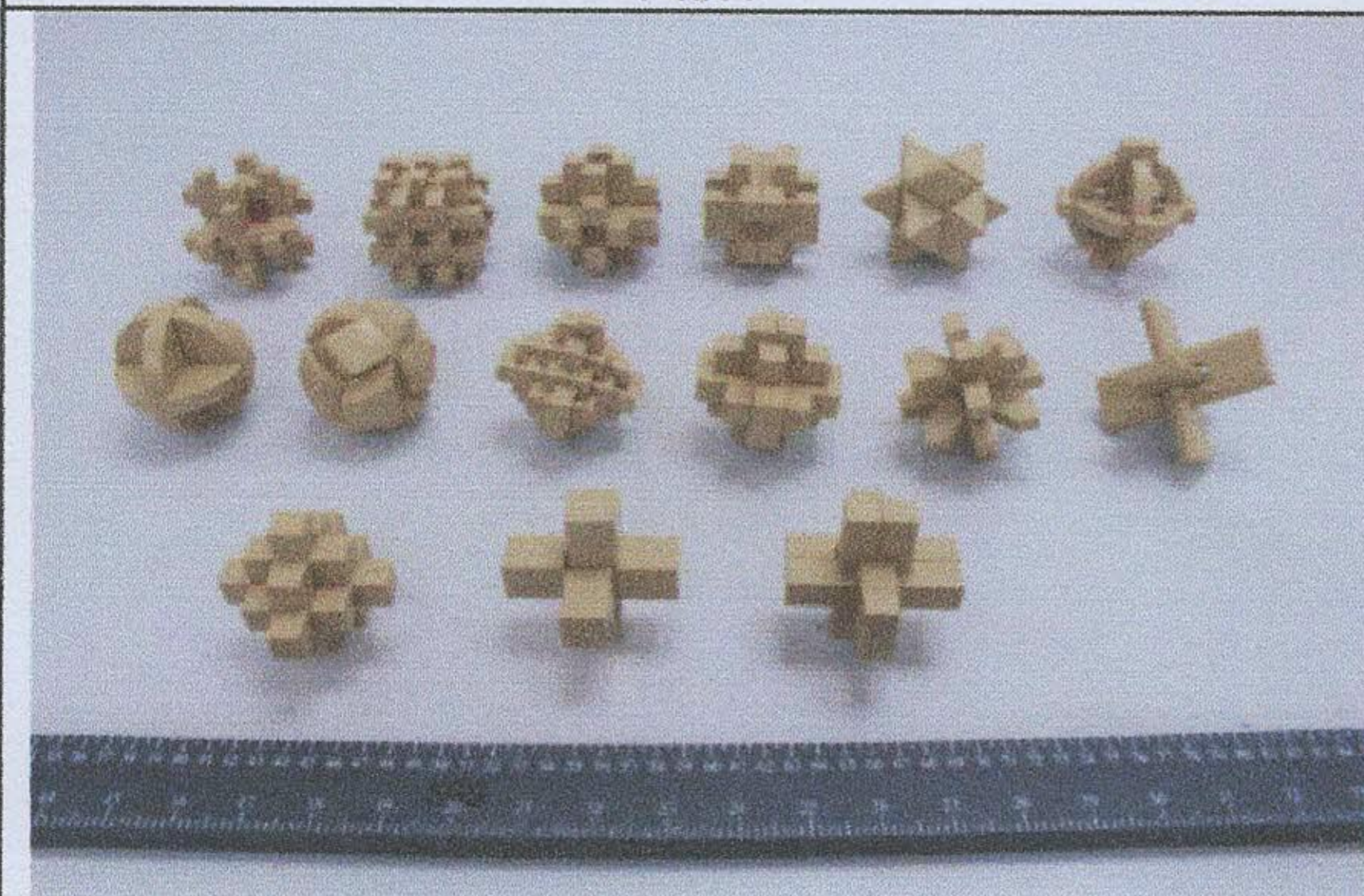
- 1) EN 71-1:2014+A1:2018 – Safety of toys – Part 1: Mechanical and Physical Properties
- 2) EN 71-2:2011+A1:2014 – Safety of toys – Part 2: Flammability
- 3) Directive 2009/48/EC and its amendment Council Directive (EU) 2017/738, Commission Directive (EU) 2018/725, Commission Directive (EU) 2019/1922 – EN 71-3:2019 – Migration of certain elements in the specified specimen(s) as listed

hereby declare with the sole responsibility that:

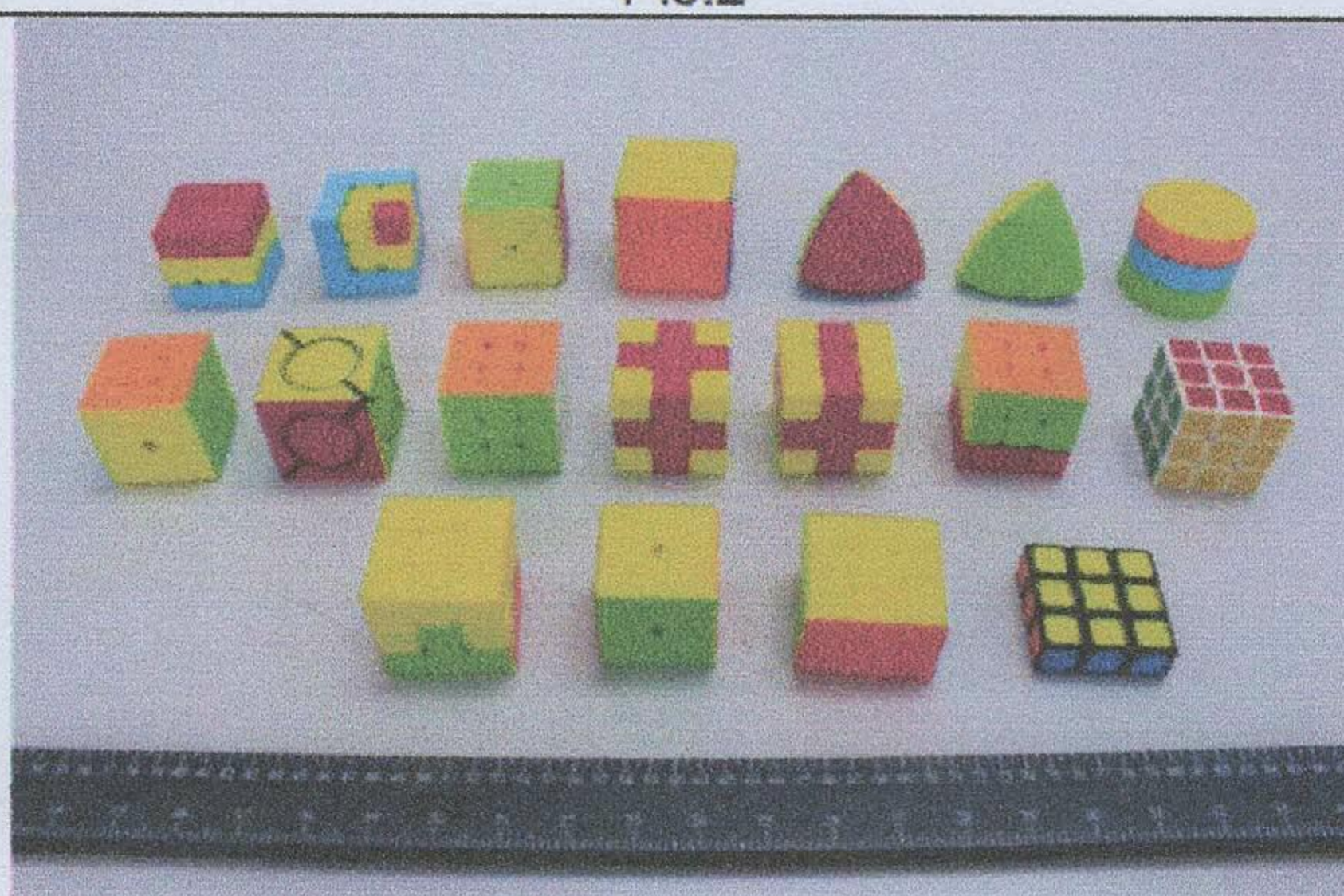
Product Name: PUZZLE TOYS

Item No.:0932A, 0932B, 0932C, 0932D, 0933D, 111, 112, 113,114, 115, 116, 117, 118, 122, 123, 124, 125, 130, 132, 133, 134, 137, 145, 146, 147, 148, 151, 153, 154, 155, 156, 157, 158, 159, 160, 161, 162, 163, 164, 165, 166, 167, 168, 169, 173, 174, 176, 178, 180, 181, 182, 183, 184, 185, 186, 187, 394-8, 394-11, 0932A-1, 0932A-2, 0932A-4, 0932A-5, 0932A-6, 0932A-7, 0932A-8, 0932C-1, 0932C-2, 0932C-3, 0932C-4, 0932C-5, 0932C-6, 0932C-7, 0932C-8, 0932C-9, 0932C-10, 0932C-11, 0933C-1, 0933C-2, 0933C-3, 0933C-4

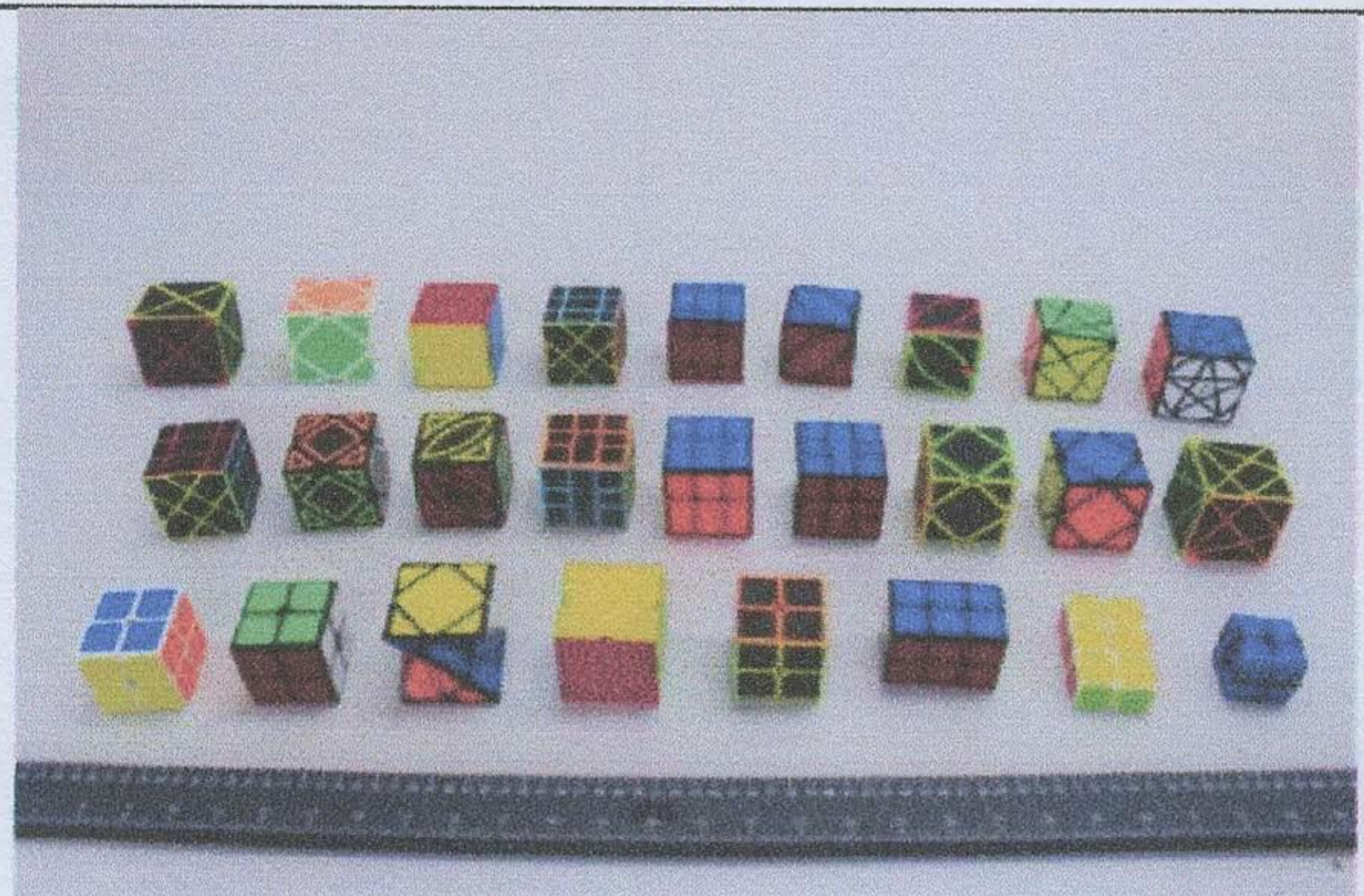
Pic.1



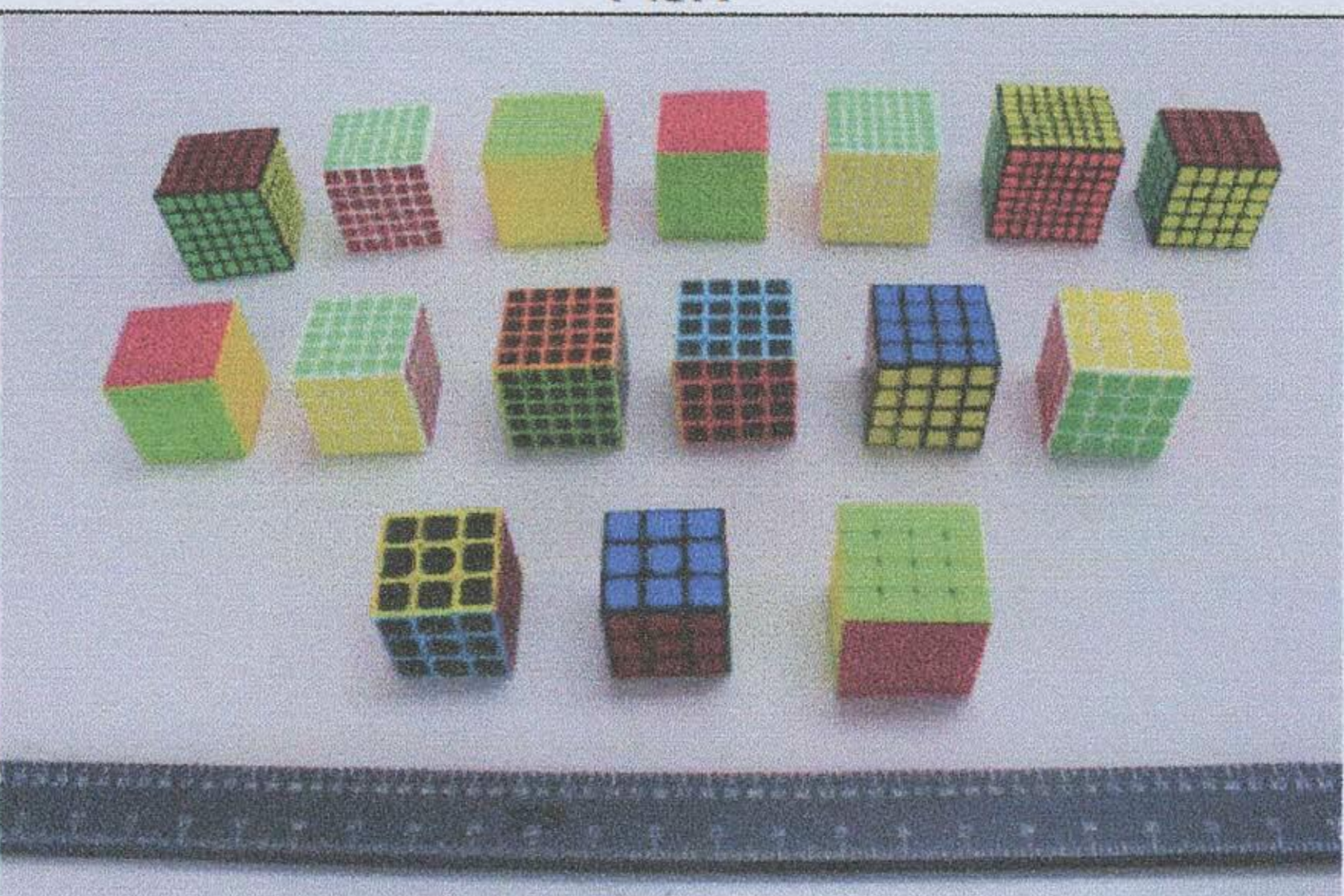
Pic.2

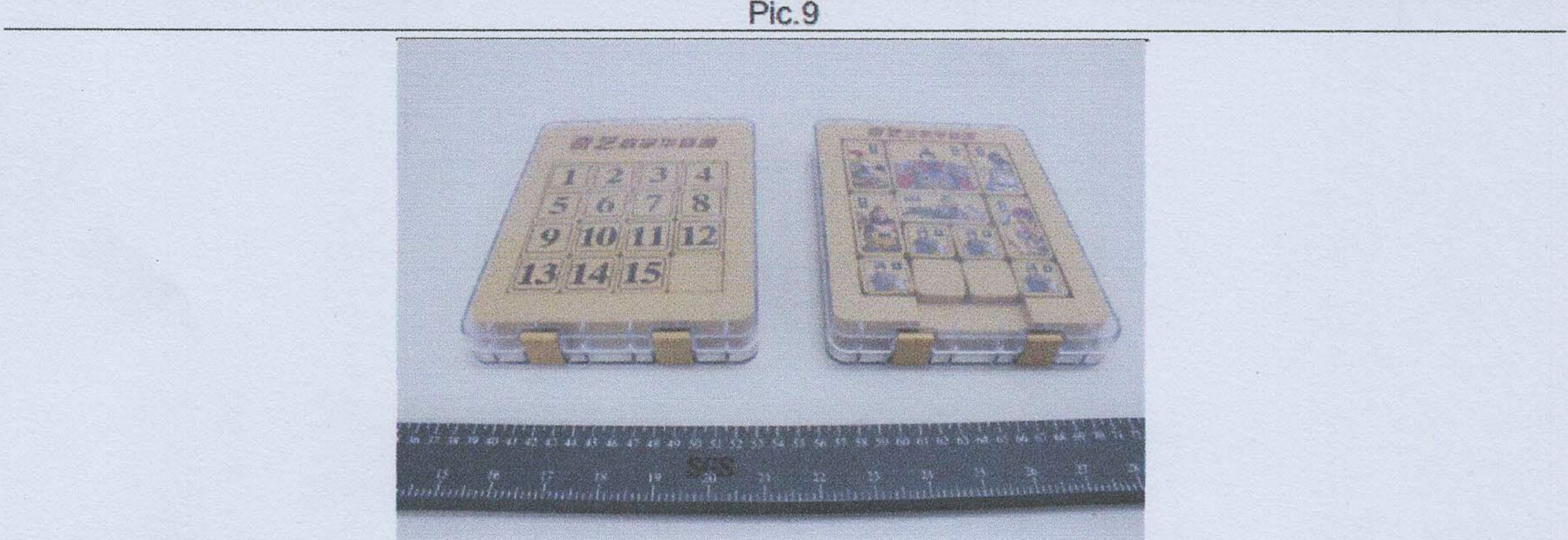
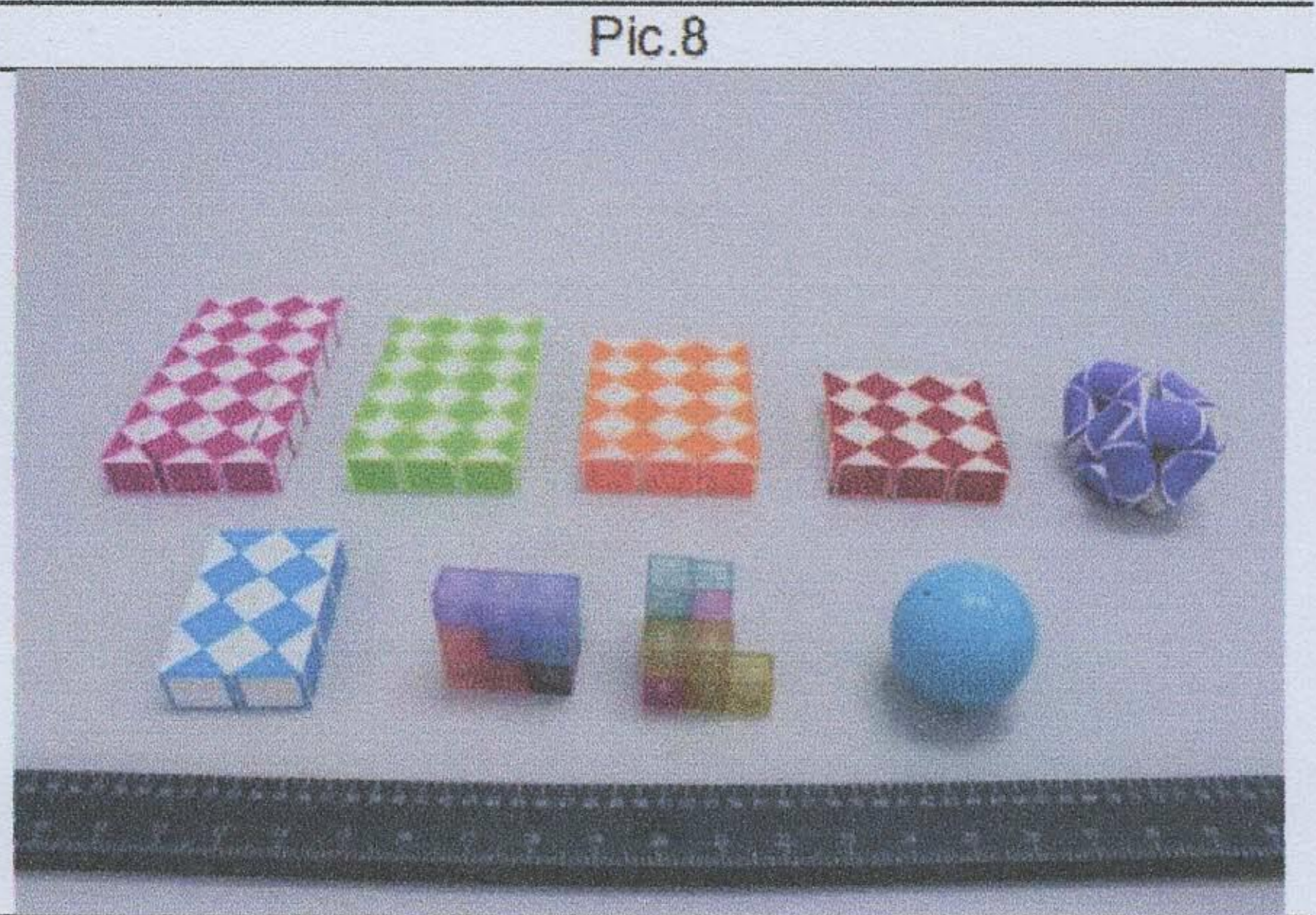
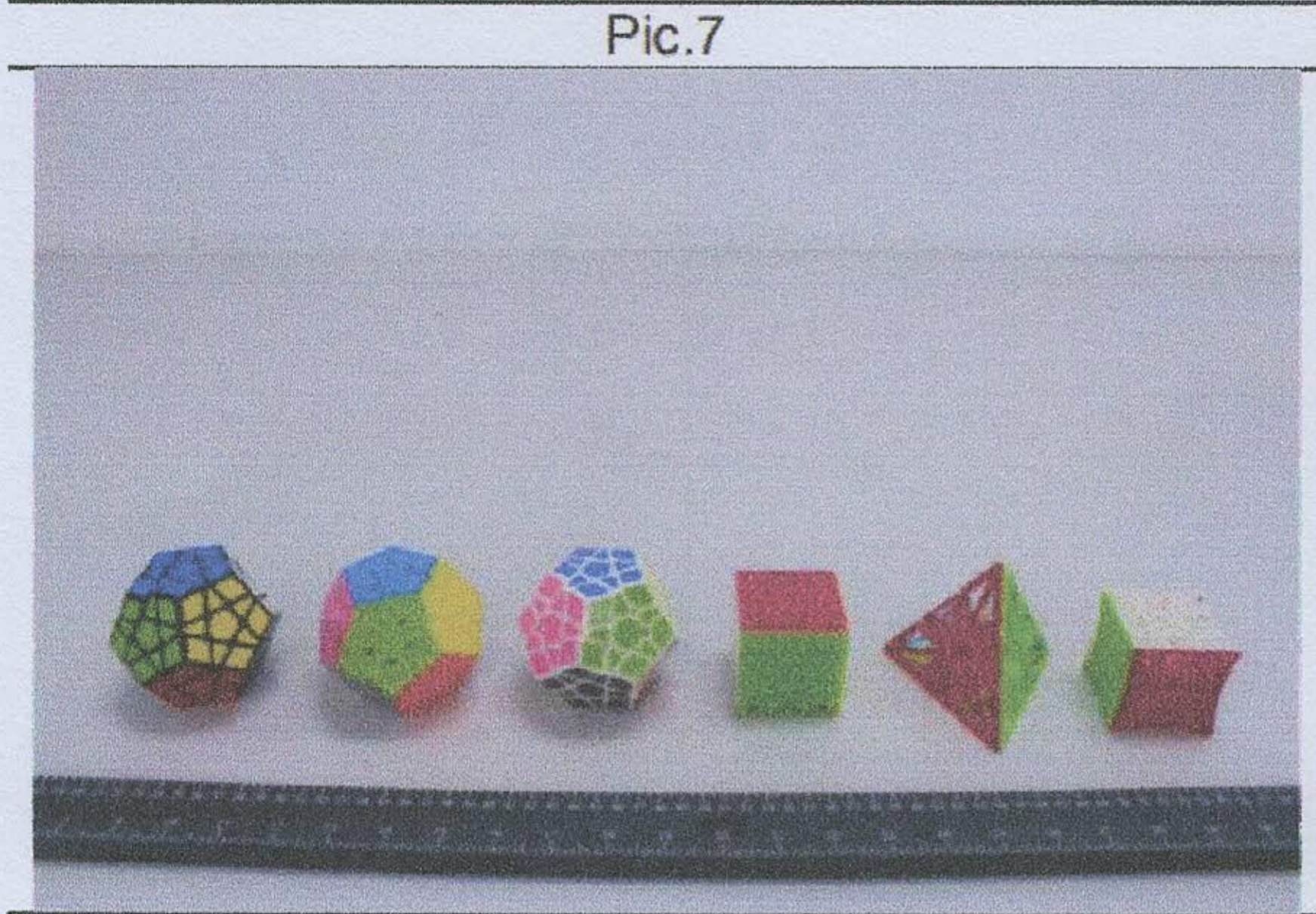
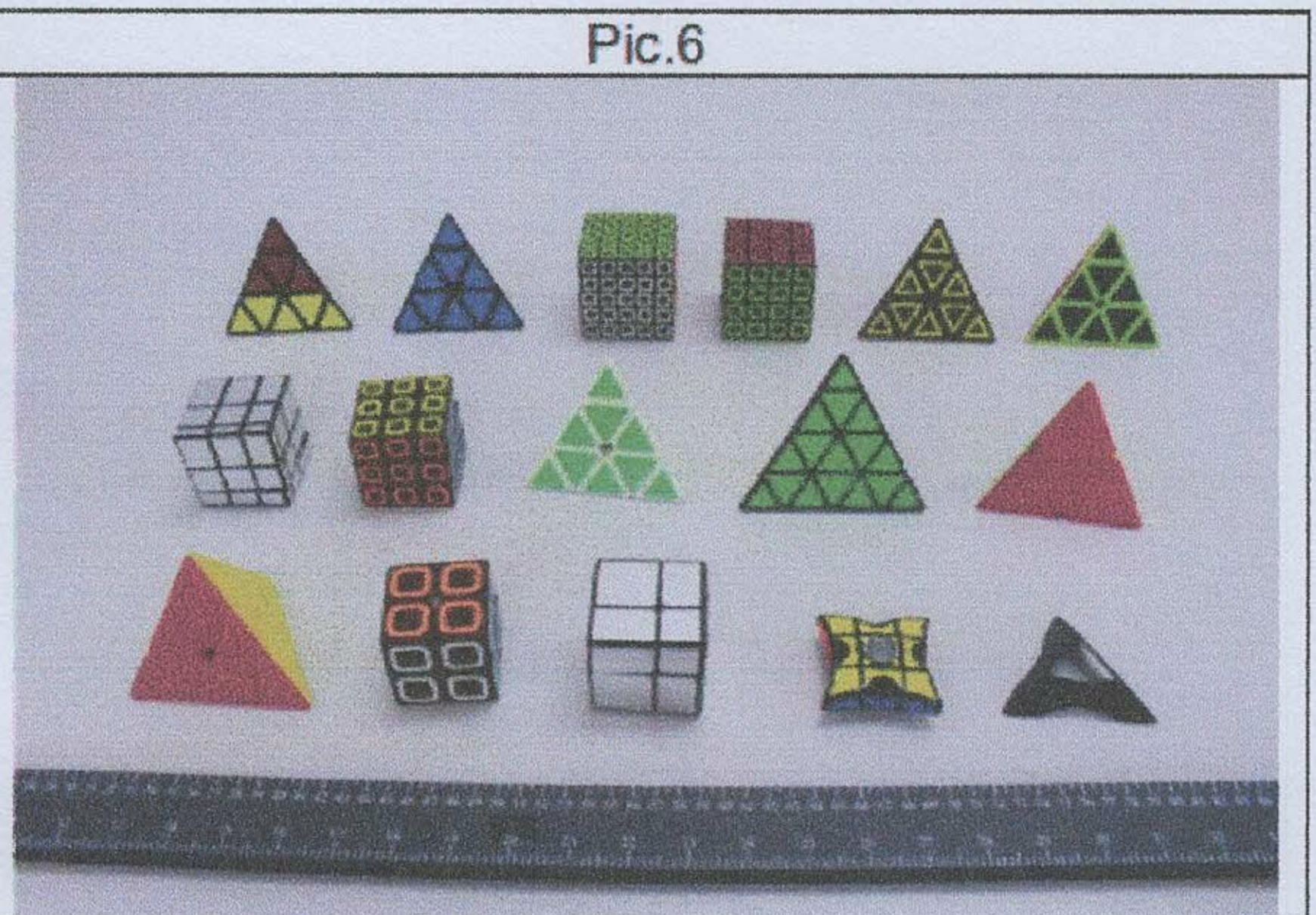
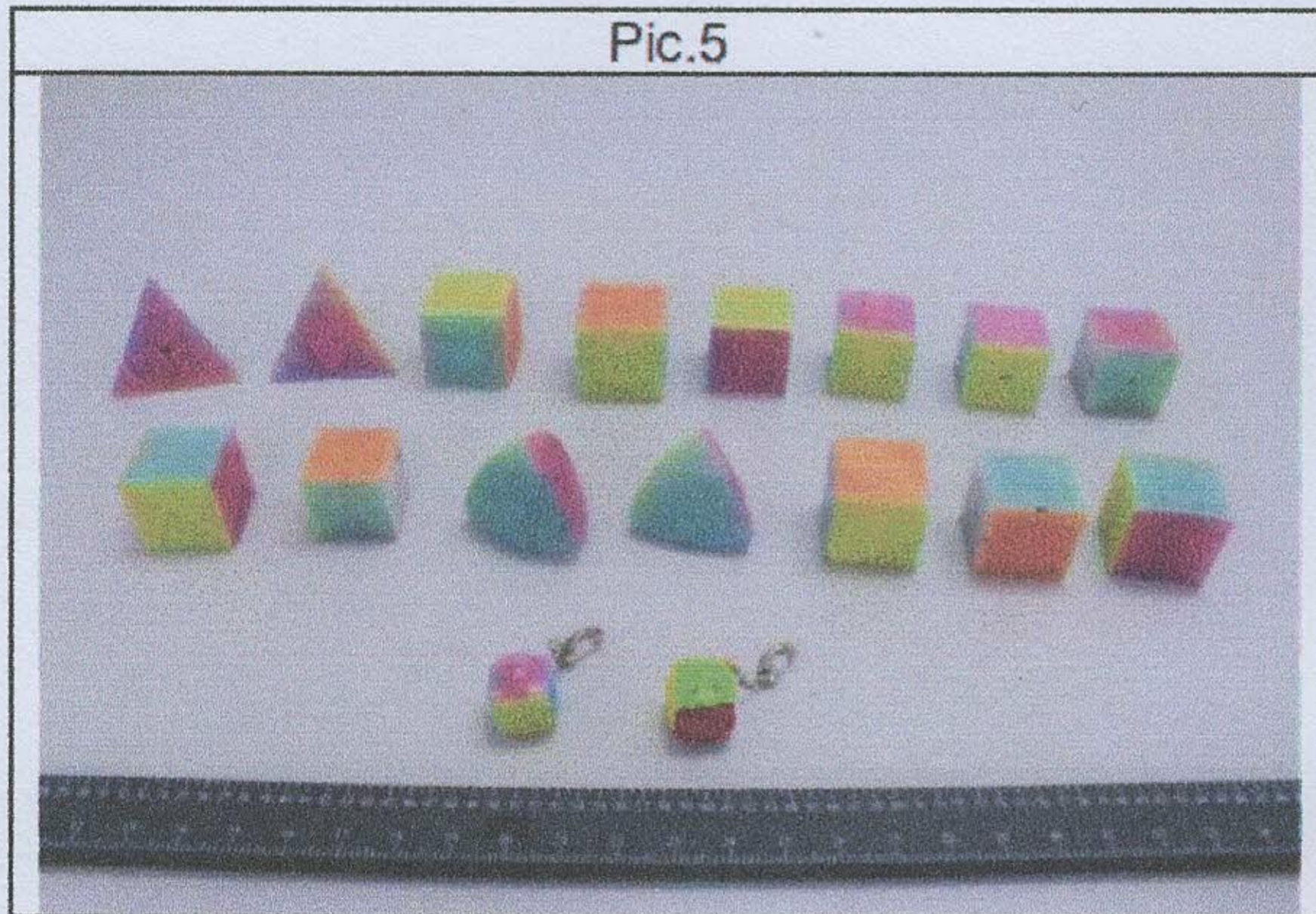


Pic.3



Pic.4





is in conformity with the applicable requirements of the following standards and documents

- 1) EN 71-1:2014+A1:2018 – Safety of toys – Part 1: Mechanical and Physical Properties
- 2) EN 71-2:2011+A1:2014 – Safety of toys – Part 2: Flammability
- 3) Directive 2009/48/EC and its amendment Council Directive (EU) 2017/738, Commission Directive (EU) 2018/725, Commission Directive (EU) 2019/1922 – EN 71-3:2019 – Migration of certain elements in the specified specimen(s) as listed

Signed by: SHANTOU QIYI PLASTIC PRODUCTS FACTORY

Name:

Done at: Shantou, China

On: 2020-02-10

