

FRAGILE



PLEASE HANDLE WITH CARE

Read instruction carefully before installation

Lea las instrucciones antes de instalar

Product **Evaporative Air Cooler**
Producto **Enfriador De Aire Evaporativo**
Model **WINTER XL**
Modelo **ACODE219**

Model No
Modelo No
Quantity **No. 1 unit**

Cantidad
Weight Net / Gross **No. 12.0 / 15.2**
Peso Neto / Bruto **lbs 26.45 / 33.51**

Product Dimension, (LxBxH) **mm 630 X 445 X 1105**
Dimensiones del Producto
(Largo X Ancho X Altura)

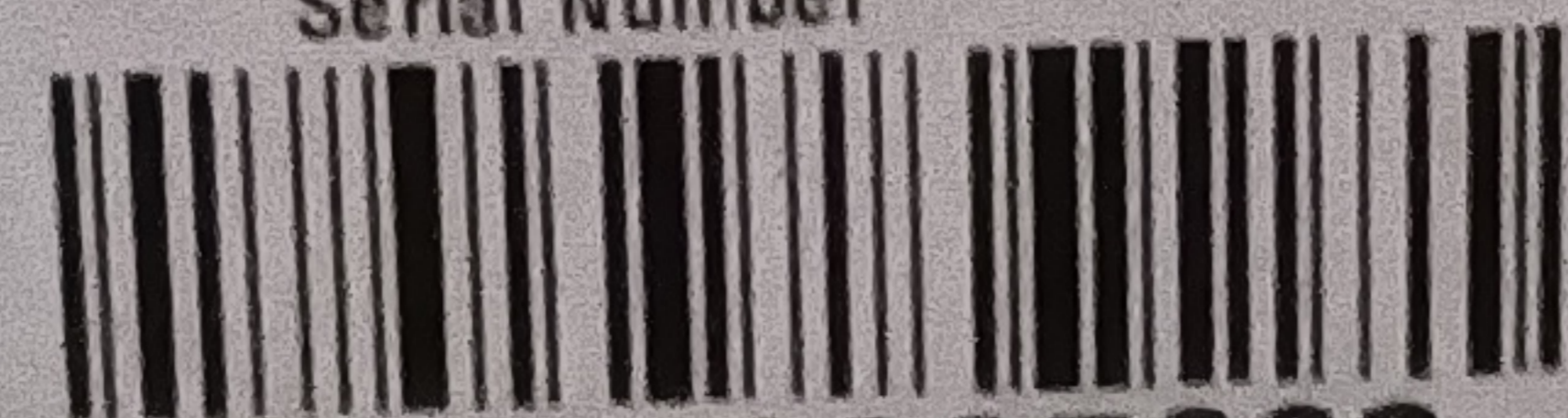
Carton Dimension, (LxBxH) **mm 682 X 502 X 1100**
Dimensiones de Empaque
(Largo X Ancho X Altura)

Accessories **5 UNITS CASTOR**
Accesorios

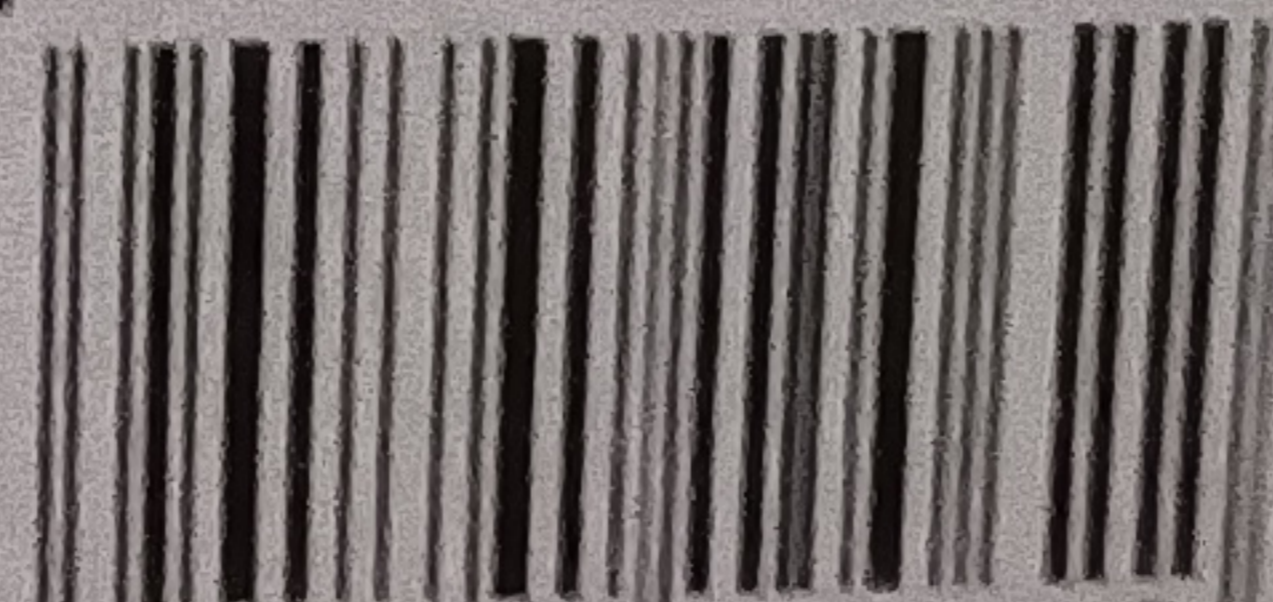
Rated Voltage/Frequency **Volts/Hz 230-240/50**
Voltaje/Frecuencia **V/Hz**

Rated Power (Max.) **Watts 185**
Potencia

Made In India / Hecho en India
Symphony Limited
Symphony House, FP12-TP50 Bodakdev,
Off SG Highway, Ahmedabad 380054, India.
Serial Number



1081719005660



8 901791 100622

CE

NOM

ISO
9001:2015
Certified Company



ErP
Compliant

RoHS

INMETRO OCP 0004

For selected models

