



Cable ID: SFTP CAT7 PATCH CORD

Test Limit: TIA Cat7 Channel

Limits Version: V7.5

Date / Time: 12/16/2024 09:05:26 PM

Headroom 20.0 dB (NEXT 3,6-4,5)

Cable Type: Cat 7 S/FTP

NVP: 78.0%

Main: Versiv

S/N: 1837095

Software Version: V6.5 Build 5

Calibration Date: 11/02/2018

Adapter: DSX-8000 (DSX-CHA804)

S/N: 20190344

Remote: Versiv

S/N: 1836453

Software Version: V6.5 Build 5

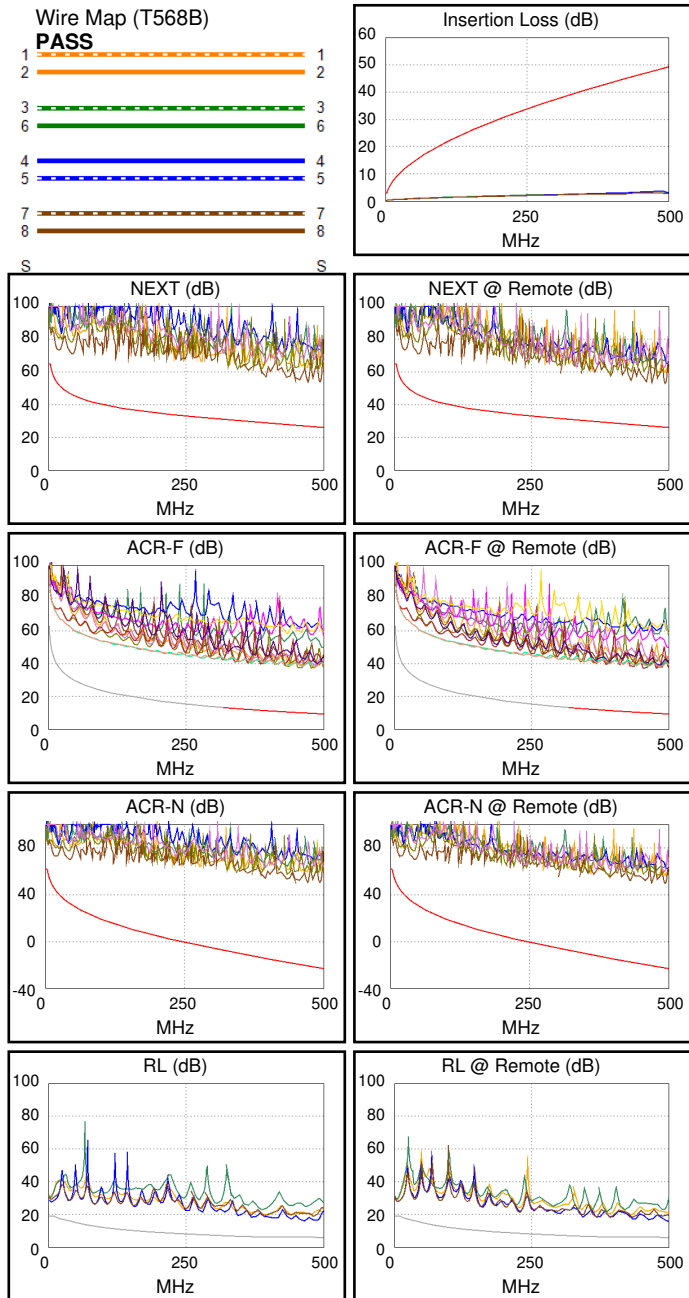
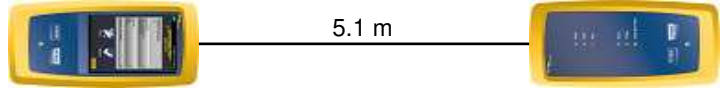
Calibration Date: 11/02/2018

Adapter: DSX-8000R (DSX-CHA804)

S/N: 1729137

Test Summary: PASS

Length (m), Limit 100.0	[Pair 1,2]	5.1
Prop. Delay (ns), Limit 555	[Pair 3,6]	22
Delay Skew (ns), Limit 50	[Pair 1,2]	0
Resistance (ohms)	[Pair 1,2]	1.47
Insertion Loss Margin (dB)	[Pair 4,5]	45.2
Frequency (MHz)	[Pair 4,5]	491.0
Limit (dB)	[Pair 4,5]	48.8



Worst Case Margin Worst Case Value

PASS	MAIN	SR	MAIN	SR
Worst Pair	3,6-4,5	3,6-4,5	3,6-4,5	3,6-4,5
NEXT (dB)	20.0	20.2	27.1	25.9
Freq. (MHz)	2.8	15.5	471.0	471.0
Limit (dB)	65.0	53.5	26.8	26.8
Worst Pair	3,6	3,6	3,6	3,6
PS NEXT (dB)	20.6	22.1	29.2	27.8
Freq. (MHz)	3.4	15.5	471.0	481.0
Limit (dB)	61.7	50.8	23.9	23.7

PASS	MAIN	SR	MAIN	SR
Worst Pair	3,6-4,5	4,5-3,6	3,6-4,5	4,5-3,6
ACR-F (dB)	26.3	26.1	26.3	26.1
Freq. (MHz)	457.0	457.0	457.0	457.0
Limit (dB)	10.1	10.1	10.1	10.1
Worst Pair	4,5	3,6	4,5	3,6
PS ACR-F (dB)	27.3	27.3	27.7	27.8
Freq. (MHz)	457.0	457.0	480.0	481.0
Limit (dB)	7.1	7.1	6.6	6.6

N/A	MAIN	SR	MAIN	SR
Worst Pair	3,6-4,5	3,6-4,5	3,6-4,5	3,6-4,5
ACR-N (dB)	23.3	23.6	71.4	70.2
Freq. (MHz)	2.8	1.5	471.0	471.0
Limit (dB)	61.5	62.0	-20.9	-20.9
Worst Pair	3,6	4,5	3,6	3,6
PS ACR-N (dB)	23.9	24.9	73.9	72.8
Freq. (MHz)	3.0	1.5	471.0	481.0
Limit (dB)	58.4	59.0	-23.8	-24.6

PASS	MAIN	SR	MAIN	SR
Worst Pair	4,5	4,5	4,5	4,5
RL (dB)	9.9	9.7	9.9	9.7
Freq. (MHz)	486.0	500.0	486.0	500.0
Limit (dB)	6.0	6.0	6.0	6.0

Compliant Network Standards:
 10BASE-T 100BASE-TX 100BASE-T4
 1000BASE-T 2.5GBASE-T 5GBASE-T
 10GBASE-T ATM-25 ATM-51
 ATM-155 100VG-AnyLan TR-4
 TR-16 Active TR-16 Passive



Cable ID: SFTP CAT7 PATCH CORD

Test Limit: TIA Cat7 Channel

Limits Version: V7.5

Date / Time: 12/16/2024 09:01:40 PM

Headroom 20.8 dB (NEXT 3,6-4,5)

Cable Type: Cat 7 S/FTP

NVP: 78.0%

Main: Versiv

S/N: 1837095

Software Version: V6.5 Build 5

Calibration Date: 11/02/2018

Adapter: DSX-8000 (DSX-CHA804)

S/N: 20190344

Remote: Versiv

S/N: 1836453

Software Version: V6.5 Build 5

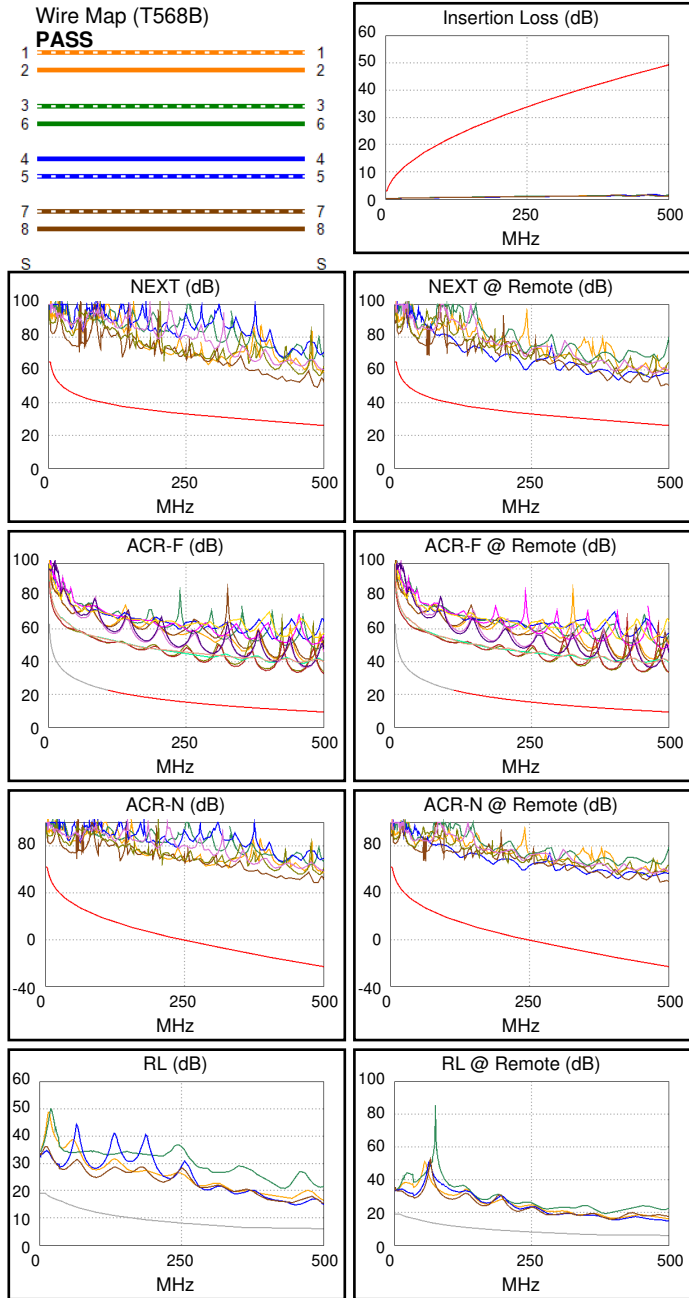
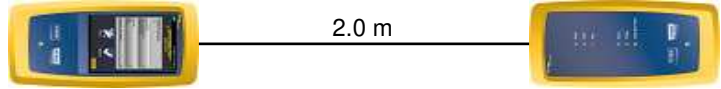
Calibration Date: 11/02/2018

Adapter: DSX-8000R (DSX-CHA804)

S/N: 1729137

Test Summary: PASS

Length (m), Limit 100.0	[Pair 1,2]	2.1
Prop. Delay (ns), Limit 555	[Pair 3,6]	9
Delay Skew (ns), Limit 50	[Pair 1,2]	0
Resistance (ohms)	[Pair 3,6]	0.55
Insertion Loss Margin (dB)	[Pair 4,5]	46.3
Frequency (MHz)	[Pair 4,5]	476.0
Limit (dB)	[Pair 4,5]	48.0



Worst Case Margin Worst Case Value

PASS	MAIN	SR	MAIN	SR
Worst Pair	3,6-4,5	3,6-4,5	3,6-4,5	3,6-4,5
NEXT (dB)	20.8	22.1	22.7	23.5
Freq. (MHz)	4.0	5.0	486.0	487.0
Limit (dB)	63.0	61.5	26.4	26.4
Worst Pair	3,6	3,6	3,6	3,6
PS NEXT (dB)	21.8	22.9	24.9	25.6
Freq. (MHz)	4.0	5.5	487.0	487.0
Limit (dB)	60.5	58.3	23.5	23.5

PASS	MAIN	SR	MAIN	SR
Worst Pair	4,5-3,6	3,6-4,5	4,5-3,6	3,6-4,5
ACR-F (dB)	23.2	23.6	23.5	24.0
Freq. (MHz)	393.0	398.0	500.0	500.0
Limit (dB)	11.4	11.3	9.3	9.3
Worst Pair	3,6	3,6	3,6	3,6
PS ACR-F (dB)	24.9	25.3	25.0	25.3
Freq. (MHz)	457.0	460.0	461.0	460.0
Limit (dB)	7.1	7.0	7.0	7.0

N/A	MAIN	SR	MAIN	SR
Worst Pair	3,6-4,5	3,6-4,5	3,6-4,5	3,6-4,5
ACR-N (dB)	24.8	26.3	69.9	70.8
Freq. (MHz)	4.0	1.0	486.0	487.0
Limit (dB)	58.9	62.0	-22.1	-22.2
Worst Pair	3,6	3,6	3,6	3,6
PS ACR-N (dB)	25.8	27.6	72.4	73.1
Freq. (MHz)	4.0	5.0	487.0	487.0
Limit (dB)	56.4	54.3	-25.1	-25.1

N/A	MAIN	SR	MAIN	SR
Worst Pair	4,5	4,5	4,5	4,5
RL (dB)	8.7	8.6	8.7	8.6
Freq. (MHz)	454.0	500.0	454.0	500.0
Limit (dB)	6.0	6.0	6.0	6.0

Compliant Network Standards:
 10BASE-T 100BASE-TX 100BASE-T4
 1000BASE-T 2.5GBASE-T 5GBASE-T
 10GBASE-T ATM-25 ATM-51
 ATM-155 100VG-AnyLan TR-4
 TR-16 Active TR-16 Passive



Cable ID: SFTP CAT7 PATCH CORD

Test Limit: TIA Cat7 Channel

Limits Version: V7.5

Date / Time: 12/16/2024 09:00:40 PM

Headroom 18.9 dB (NEXT 3,6-4,5)

Cable Type: Cat 7 S/FTP

NVP: 78.0%

Main: Versiv

S/N: 1837095

Software Version: V6.5 Build 5

Calibration Date: 11/02/2018

Adapter: DSX-8000 (DSX-CHA804)

S/N: 20190344

Remote: Versiv

S/N: 1836453

Software Version: V6.5 Build 5

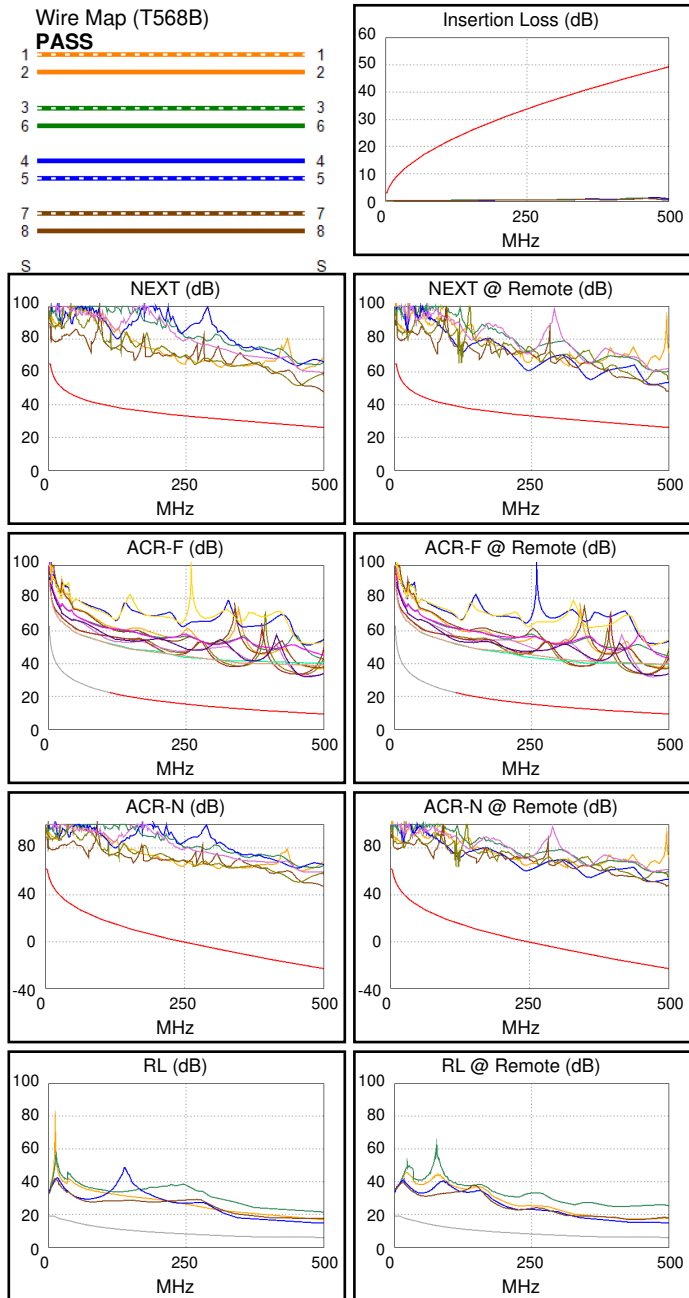
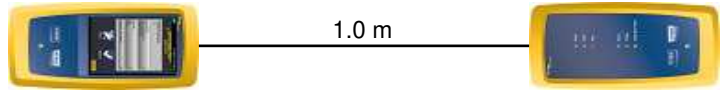
Calibration Date: 11/02/2018

Adapter: DSX-8000R (DSX-CHA804)

S/N: 1729137

Test Summary: PASS

Length (m), Limit 100.0	[Pair 1,2]	0.9
Prop. Delay (ns), Limit 555	[Pair 1,2]	4
Delay Skew (ns), Limit 50	[Pair 3,6]	1
Resistance (ohms)	[Pair 1,2]	0.28
Insertion Loss Margin (dB)	[Pair 4,5]	47.3
Frequency (MHz)	[Pair 4,5]	485.0
Limit (dB)	[Pair 4,5]	48.5



Worst Case Margin Worst Case Value

PASS	MAIN	SR	MAIN	SR
Worst Pair	3,6-4,5	3,6-4,5	3,6-4,5	3,6-4,5
NEXT (dB)	18.9	20.4	21.7	22.2
Freq. (MHz)	4.3	5.5	500.0	500.0
Limit (dB)	62.6	60.8	26.1	26.1
Worst Pair	3,6	3,6	4,5	3,6
PS NEXT (dB)	20.6	21.4	24.2	24.4
Freq. (MHz)	4.3	5.5	500.0	500.0
Limit (dB)	60.1	58.3	23.2	23.2

PASS	MAIN	SR	MAIN	SR
Worst Pair	7,8-3,6	3,6-7,8	7,8-3,6	3,6-7,8
ACR-F (dB)	22.0	22.0	22.1	22.1
Freq. (MHz)	468.0	468.0	469.0	471.0
Limit (dB)	9.9	9.9	9.8	9.8
Worst Pair	3,6	3,6	3,6	3,6
PS ACR-F (dB)	22.4	22.7	22.4	22.8
Freq. (MHz)	464.0	462.0	464.0	468.0
Limit (dB)	6.9	7.0	6.9	6.9

N/A	MAIN	SR	MAIN	SR
Worst Pair	3,6-4,5	3,6-4,5	3,6-4,5	3,6-4,5
ACR-N (dB)	23.0	25.1	70.3	70.3
Freq. (MHz)	3.8	5.1	500.0	495.0
Limit (dB)	59.5	56.6	-23.2	-22.8
Worst Pair	3,6	3,6	4,5	4,5
PS ACR-N (dB)	24.6	26.0	72.8	72.7
Freq. (MHz)	3.8	5.1	500.0	495.0
Limit (dB)	57.0	54.1	-26.1	-25.7

N/A	MAIN	SR	MAIN	SR
Worst Pair	4,5	4,5	4,5	4,5
RL (dB)	8.4	8.6	8.4	8.6
Freq. (MHz)	476.0	475.0	476.0	475.0
Limit (dB)	6.0	6.0	6.0	6.0

Compliant Network Standards:
 10BASE-T 100BASE-TX 100BASE-T4
 1000BASE-T 2.5GBASE-T 5GBASE-T
 10GBASE-T ATM-25 ATM-51
 ATM-155 100VG-AnyLan TR-4
 TR-16 Active TR-16 Passive



Cable ID: SFTP CAT7 ATCH CORD

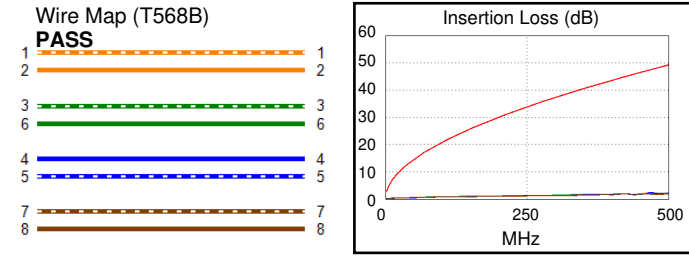
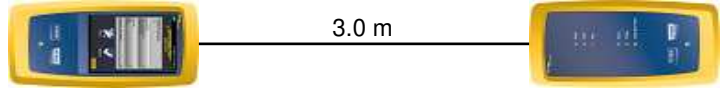
Test Limit: TIA Cat7 Channel
Limits Version: V7.5
Date / Time: 12/16/2024 08:55:46 PM
Headroom 20.5 dB (NEXT 3,6-4,5)
Cable Type: Cat 7 S/FTP
NVP: 78.0%

Main: Versiv
S/N: 1837095
Software Version: V6.5 Build 5
Calibration Date: 11/02/2018
Adapter: DSX-8000 (DSX-CHA804)
S/N: 20190344

Test Summary: PASS

Remote: Versiv
S/N: 1836453
Software Version: V6.5 Build 5
Calibration Date: 11/02/2018
Adapter: DSX-8000R (DSX-CHA804)
S/N: 1729137

Length (m), Limit 100.0	[Pair 1,2]	3.0
Prop. Delay (ns), Limit 555	[Pair 3,6]	14
Delay Skew (ns), Limit 50	[Pair 3,6]	1
Resistance (ohms)	[Pair 7,8]	0.82
Insertion Loss Margin (dB)	[Pair 1,2]	45.1
Frequency (MHz)	[Pair 1,2]	463.0
Limit (dB)	[Pair 1,2]	47.3



Worst Case Margin Worst Case Value

PASS	MAIN	SR	MAIN	SR
Worst Pair	3,6-4,5	3,6-4,5	3,6-4,5	3,6-4,5
NEXT (dB)	21.0	20.5	23.3	23.2
Freq. (MHz)	3.9	5.1	478.0	479.0
Limit (dB)	63.3	61.3	26.6	26.6
Worst Pair	3,6	3,6	3,6	3,6
PS NEXT (dB)	22.0	21.8	25.7	25.0
Freq. (MHz)	3.9	5.1	479.0	477.0
Limit (dB)	60.8	58.8	23.7	23.8

PASS	MAIN	SR	MAIN	SR
Worst Pair	3,6-4,5	4,5-3,6	3,6-4,5	4,5-3,6
ACR-F (dB)	24.1	23.8	24.3	23.8
Freq. (MHz)	412.0	452.0	453.0	452.0
Limit (dB)	11.0	10.2	10.1	10.2
Worst Pair	4,5	3,6	4,5	3,6
PS ACR-F (dB)	26.0	26.4	26.7	26.4
Freq. (MHz)	455.0	453.0	492.0	453.0
Limit (dB)	7.1	7.1	6.4	7.1

N/A	MAIN	SR	MAIN	SR
Worst Pair	3,6-4,5	3,6-4,5	3,6-4,5	3,6-4,5
ACR-N (dB)	24.8	24.0	69.4	69.4
Freq. (MHz)	3.1	2.5	478.0	479.0
Limit (dB)	61.1	61.7	-21.5	-21.6
Worst Pair	3,6	3,6	3,6	3,6
PS ACR-N (dB)	25.8	25.7	72.0	71.4
Freq. (MHz)	3.1	2.5	479.0	477.0
Limit (dB)	58.3	58.7	-24.4	-24.3

N/A	MAIN	SR	MAIN	SR
Worst Pair	4,5	1,2	4,5	1,2
RL (dB)	8.0	10.7	8.0	10.7
Freq. (MHz)	466.0	463.0	466.0	463.0
Limit (dB)	6.0	6.0	6.0	6.0

Compliant Network Standards:
 10BASE-T 100BASE-TX 100BASE-T4
 1000BASE-T 2.5GBASE-T 5GBASE-T
 10GBASE-T ATM-25 ATM-51
 ATM-155 100VG-AnyLan TR-4
 TR-16 Active TR-16 Passive

