

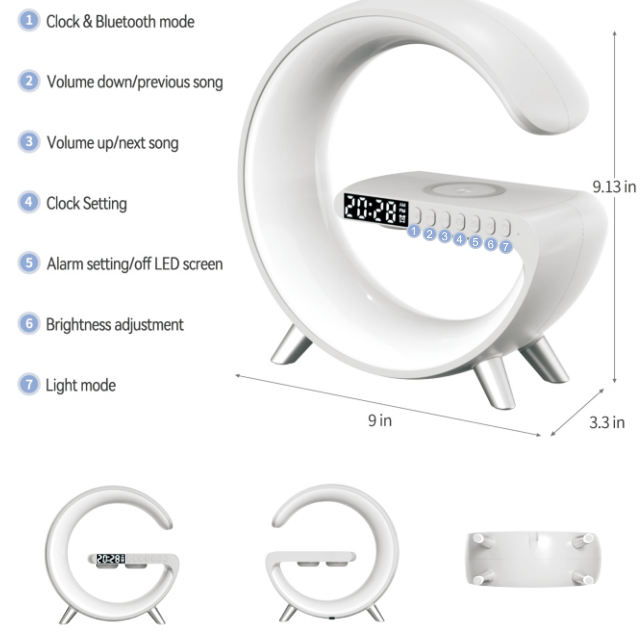
Smart Light Sound Machine Instruction manual



Thank you very much for choosing our product among thousands of products, this product can let you experience smart light + Bluetooth speaker + clock alarm clock + wireless charging at the same time. The product exists multi-functional settings, please read the manual carefully before use, if in the process of use, encounter any problems, please contact us

1

Schematic diagram



Specification

Input voltage: 12V/2.5A
Wireless output: 5W-7.5W-10W-15W
LED output: 10W
Sound Machine Power: 3W
Material: ABS+PC
Product color: white,black,light gray,Pink,Blue,Green

Light mode: 256 kinds
Transmission distance: 2-6mm
Charging efficiency: 75%
Working frequency: 100-205KHZ
Product size: 9*9.13*3.3 inch
Net weight: 466g

2

Charging Tips



15W Fast Wireless Charging

Compatibility

Apple Phones: Iphone 14/14 Pro/14 Plus/14 Pro Max/13/13 Pro/13 Pro Max/12/12 Pro/12 Pro Max/11/Xs/Max/Xr/X/8/8 Plus;
Samsung phones: Galaxy S22/S22 Ultra/S20/S20+/S20 Ultra/S10/S10+/S9+/S8+/S8+/S7/S7 edge/S6 edge Plus/Note 10/9/8/7/5;
Any Android phone that supports Qi wireless charging;
Headphones: Any headset model that supports wireless charging;

3

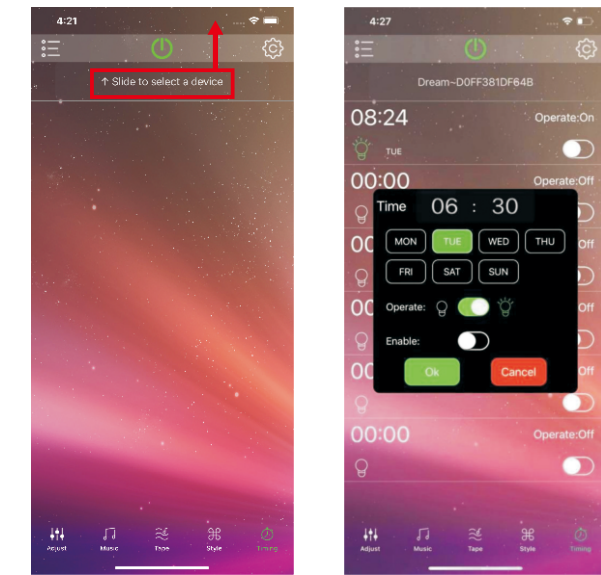
Instructions:

- **Clock Setting**
 - Double-click **M** button to enter the clock mode, click **C** button to start setting the time, click **+** button to set the clock, click **-** button to set the minutes, set up and wait 5 seconds to complete the settings. 2 minutes after completing the clock setting, the device automatically returns to Bluetooth mode;
 - Long press the **C** button to switch between 12/24 hour mode;
- **Alarm clock setting**
 - Double-click **M** button to enter the clock mode, click **C** button to set the alarm, press **+** button to set the clock, press **-** button to set the minutes, set the time and wait 5 seconds to complete the setting, complete the setting of the LED screen alarm clock logo lights up, set the alarm clock 2 minutes after the device will automatically return to Bluetooth mode;
 - Alarm lasts for 5 minutes and will be automatically turned off after 5 minutes. If you want to turn off the alarm within 5 minutes, click **M** button to turn off the current alarm;
 - Alarm clock off: double-click **M** button to enter the clock mode, double-click **C** button to close the alarm clock, the LED screen alarm clock logo disappears after successful closure;
 - Long press **C** button for 2 seconds to turn on/off the digital LED screen;
- **Light control**
 - +** Button: click **+** button to turn on the lights, continuous stand-alone **+** button can switch colors (10 lighting color modes), the rest of the colors and 256 modes can be controlled through the cell phone APP, long press **+** button 2 seconds to turn off the lights;
 - Button: click **-** button to adjust the light brightness 1-5 files: 20-100%;
- **Bluetooth speaker**
 - When the product is turned on, the default Bluetooth mode, cell phone Bluetooth search NH-69, complete the Bluetooth connection;
 - +** Button: click to play the previous music, long press to reduce the volume of the Bluetooth speaker;
 - Button: click to play the next music; long press to increase the volume of the Bluetooth speaker;
 - Click **M** button to pause/play;
 - Press **M** button to answer the phone when a call comes;

4

Wake-up light:

How to set the wake up light?
Click 'Timing' to start setting the wake-up light time;
1) 'Slide to select a device' to select your device;
2) Click on the time below to start setting, slide the number after 'Time' to set the clock and minutes;
3) Click on the week button below to set the specific time period for the wake-up light;
4) Click on the 'Operate' switch to turn the wake-up light on to successfully set the wake-up light;
At the set time, will simulate the early morning sun and gradually become brighter (0-100%), with a duration of 3 minutes;
After 3 minutes, you can turn off the current wake up light by APP or by long press **+**;



5

Sleep Aid Light:

Sleep Aid Light—Your Best Self Begins With Your Best Sleep
Sleeping white noise machine: cell phone Bluetooth connection Bluetooth speaker: NH-69, you can play any white noise you like and can create a comfortable sleep environment for your cell phone, to achieve their own customized for their sleep habits.
Sleep experts agree: Doing the same thing every night before bed helps regulate the brain's sleep and prepare the body for rest.
This product can be adjusted to 16 million colors, 256 lighting patterns, choose your favorite color to adjust the atmosphere of the bedroom, cell phones connected to Bluetooth speakers can play the white noise that suits you, helping you develop a routine that suits you and get the sleep you've always dreamed of.



6

Notes:

- Wake up light needs to be set through HappyLighting APP, and alarm clock needs to be set by operating the product;
- All operations need to be done with the Bluetooth function of the phone turned on;
- Please pay attention to the following issues, otherwise it may lead to abnormal charging, high charging temperature, intermittent charging, or even no charging:
 - 1) Please use the fast charger adapter (12V / 2.5A) that comes standard with this product. 5V / 1-2A adapter will result in insufficient power supply;
 - 2) Please place the phone in the center of the wireless charging induction area;
 - 3) The charging distance is 2-6mm, please do not install a case thicker than 2mm;
 - 4) When wireless charging, do not have any metal or magnetic objects within a distance of 6cm in diameter from the center of the back of the phone;
 - 5) Lower temperature, the phone charging speed is faster. Charging speed is faster in winter than in summer;
- 8:00 a.m. - 20:00 p.m. wireless charging beep, other times automatically turn off the beep, 12-hour mode as well;

What's inside the box?
Product*1
Adapter*1
Charging cable*1
User manual*1

The instructions and pictures are all sketches.
The final product shall be in kind

7

HappyLighting User Manual

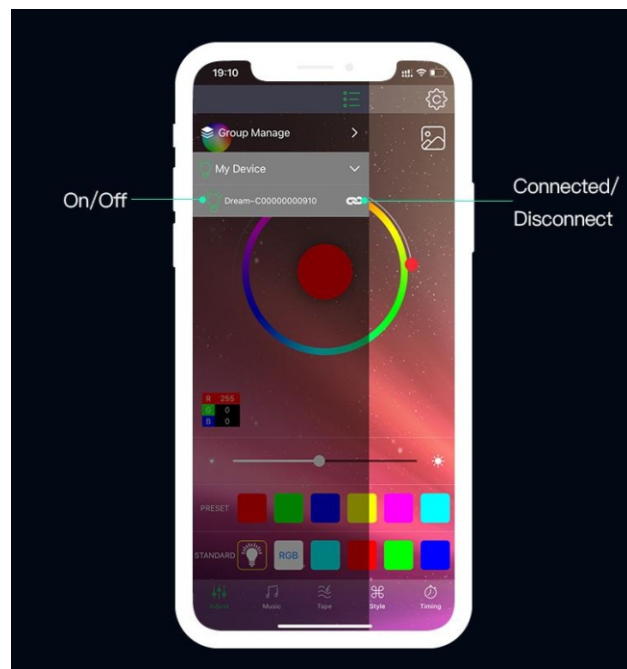


Scan the QR-Code to download the App

- Bluetooth Connection**
For the first time you use it or never pair with 'HappyLighting' after moving the equipment, please following the below steps:
A. First, please enter your phone settings, open the Bluetooth.
Note: For Android phone, also need the Location Services.
B. Second, open the 'Happy Lighting app', the app will auto to scan and connect the device.

8

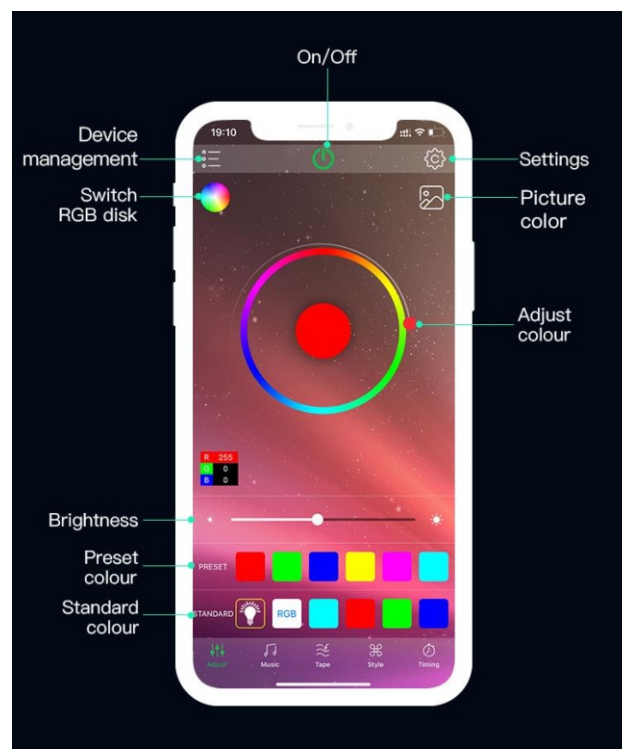
How to add the product to APP?
Step 1. Download APP, please search "HappyLighting" in APP store, Android market and Google play or scan the QR code to download.
Step 2. Add the device to the APP.
1) Turn on the Bluetooth of your phone;
2) Open the 'HappyLighting' APP and click on the symbol in the upper left corner;
3) Click on "My Device";
4) click on the device "Dream- + product serial number" to add it successfully;



9

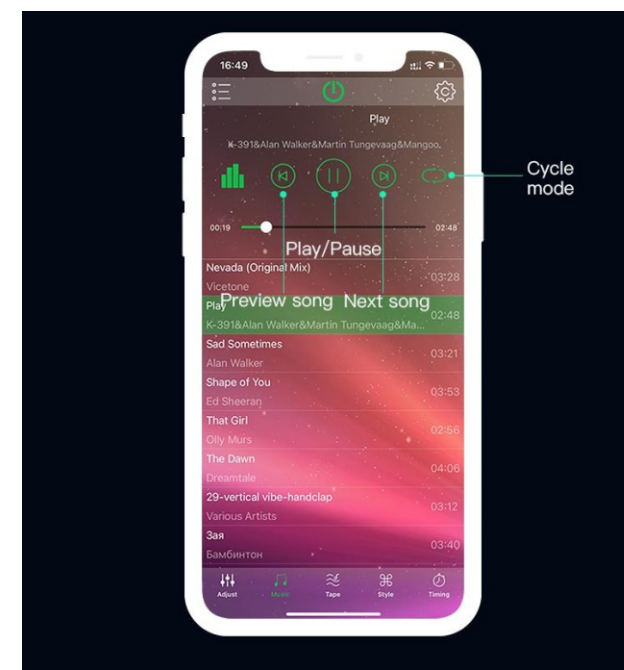
2. Main User Interface

- Adjust: Change the RGB colors and brightness.



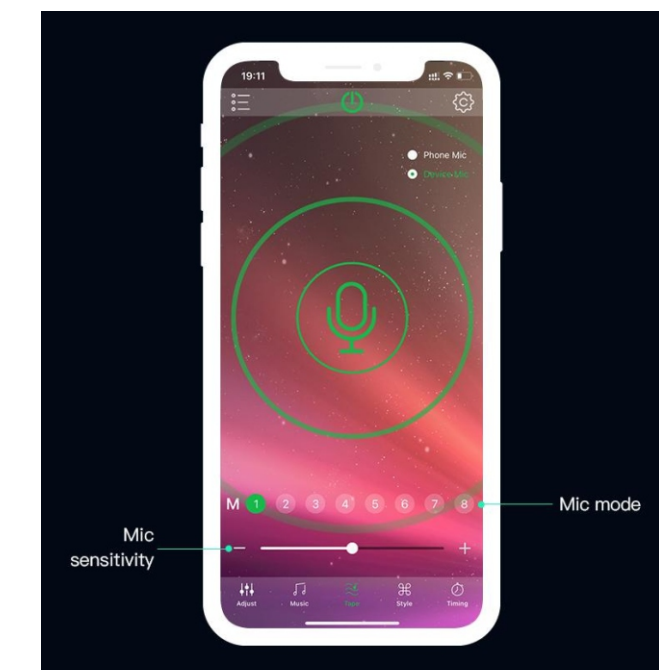
10

- Music: Play music and change RGB colors by music rhythm.



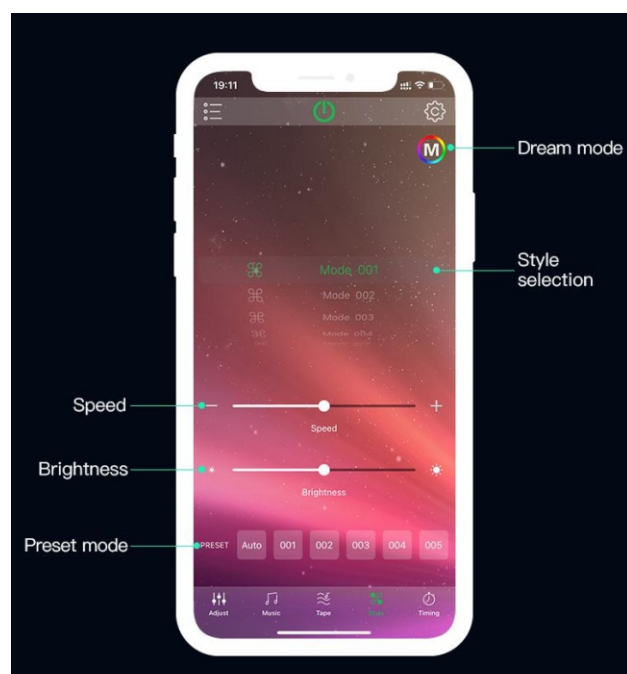
11

- Tape:
Phone Mic: Change RGB colors by phone microphone input voice rhythm.
Device Mic: Change RGB colors by device microphone input voice rhythm. There are four modes for users to choose.



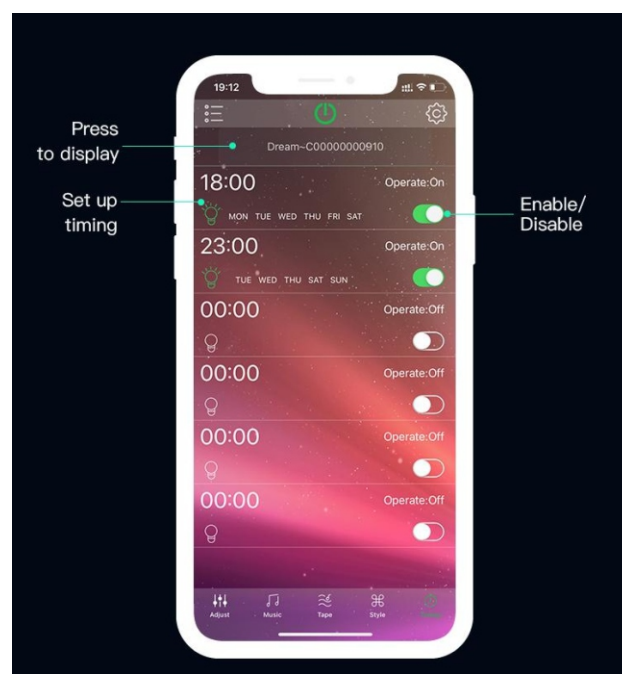
12

- Style: Change RGB colors by fixed model.



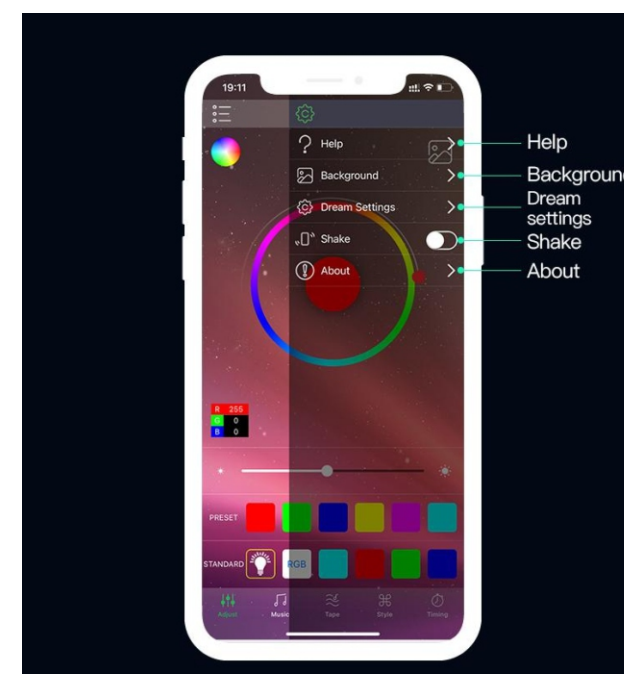
13

- Timing: Set timers, can auto On/Off the device.



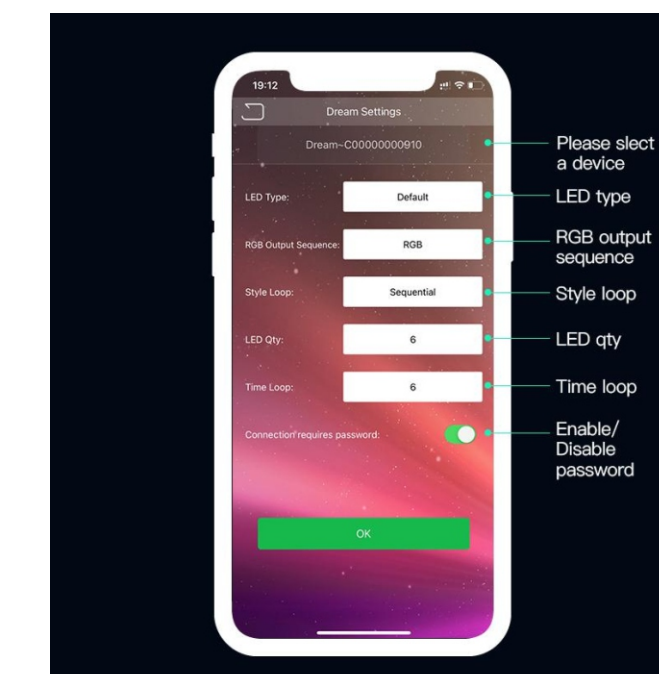
14

- Settings:
Shake: Change colors by shake the phone.



15

- Dream Settings: When have the rainbow function, can set the LED Type, RGB Output Sequence, Style Loop, Connection requires password.



16