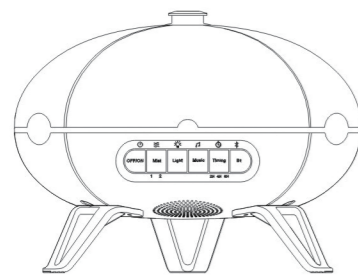


## User Manual

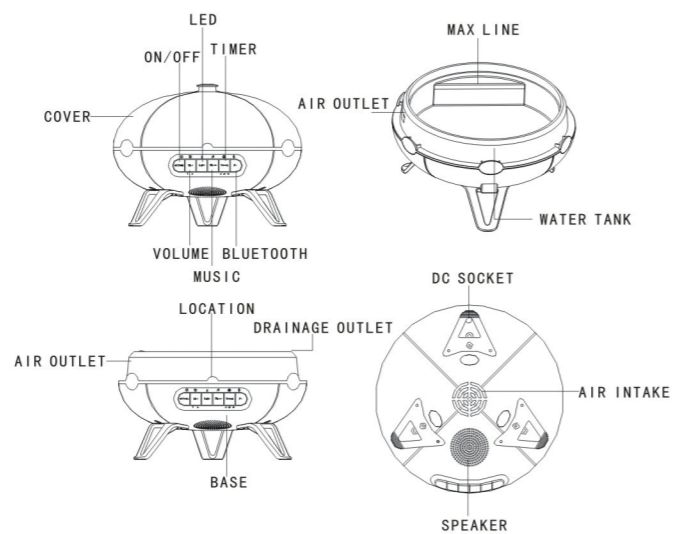
## Aroma Diffuser



FCC CE ROHS

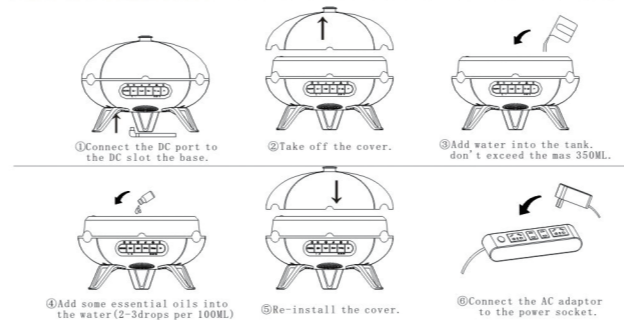
1

## PRODUCT DESCRIPTIONS



2

## OPERATION



When the power supply is connected and the sound "D" is emitted, the power supply is connected. The "on key" is the main switch, then press it "On key", the indicator is on, indicating that the device is powered on and can use various functions. Click "On" again, if the indicator is off, the device is powered off and all functions are disconnected.

## ① Atomization:

Press the first time to enter fog mode, press the second time to enter fog mode, press the third time to close atomization mode, when the atomization is turned off, the fan will stop working after 15 seconds delay;

Timing mode: 2 hours, 4 hours, 6 hours: (After the humidifier function is enabled can use the timing function)

## ② LED light

Press all the way to control the RGB color, press the first 7 colors alternate gradually, press the first Go to monochrome twice the last color, press to close at the end, press again to start again, And so on;

## ③ Built-in music

Built-in 13 music, click Play built-in default music, then press everything to replace the next built-in music, hold for 2 seconds Close, if you do not press, the single cycle;



3

## BLUETOOTH MODE

## 1. Bluetooth connection.

This audio supports Bluetooth devices with A2DP function. First of all, the single machine is on/on, enter Bluetooth mode, The Bluetooth indicator is white and accompanied by an alert tone. At this time, the speaker is waiting for a pairing connection, and only when Only in this state can it be paired and connected to the Bluetooth speaker.

## 2. Mobile connection

In Phone Settings, turn on the Bluetooth Settings switch and click Scan to find the device. When the available device displays the "YP" character, it means that the phone has found the Bluetooth speaker. Click "YP" to enter the pairing mode. After the phone is successfully paired with the stereo, a prompt will appear, which will show that the phone is connected.

## 3. Computer connection

If your computer has Bluetooth, enable Bluetooth first. If your computer doesn't have Bluetooth, you'll have to install it first, And plug in Bluetooth adapter to use Bluetooth function.

① Click the Bluetooth icon in the lower right corner of the computer desktop, click the right mouse button, and choose "Add Device".

② The Bluetooth adapter will automatically search for the stereo and will display "YP".

③ Double-click "YP", the computer will automatically install the driver, enter the driver installation interface.

4. click connect, audio and computer connection can be used; Do not use stereo playback if you can, check your computer.

The audio device has switched to Bluetooth mode and verified that the computer is connected to the audio. Pairing and joining

① If the last stereo has been connected to another Bluetooth device, it will actively connect to the last connected device after turning on.

② If the stereo is not connected to the mobile phone or other equipment before the stereo enters the pairing mode, the motor can be paired and connected.

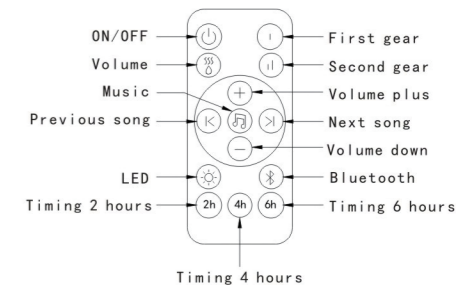
Cannot connect to the device when the device is connected to a mobile phone or other mobile phone.

④ When the mobile phone is connected to other devices, the Bluetooth connection of this device cannot be used, and the connection with other devices must be closed first. Equipment. Then restart the Bluetooth speaker, enter pairing mode, and reconnect.

4

Questions	Solution
Unsuccessful pairing and connection repeatedly	1. Check the speaker and make sure it is in the searching state or reboot the speaker. 2. Connection is difficult when there are too many Bluetooth devices nearby. Turn off other Bluetooth devices. 3. Turn off the Bluetooth device that was connected with the Bluetooth speaker last time, and reconnect the speaker.
Muted or distorted sound	1. Check the volume of your phone or the speaker, and adjust the volume. 2. The battery is low, please charge it.
Choppy music play	1. Check if the device is beyond the effective connection distance. 2. Check if there is any obstacle between the speaker and your device.
The indicator not shining in Bluetooth mode	1. The battery is low. Please charge it. 2. Please reboot the speaker.

## REMOTE CONTROL

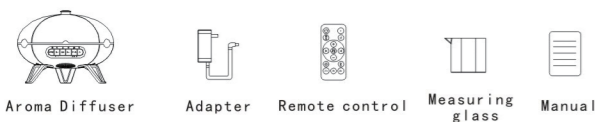


5

## SPECIFICATIONS

Size:	180×180×136mm
Weight:	500g
Power: input/output	AC100-240V 50/60HZ / DC24V 750MA
Cable length:	Approx 180cm
Electric consumption:	Approx 13W
Timer:	ON/2H/4H/6H
Mist mode:	Low mist mode/High mist mode
Water capacity:	350ML
Material:	ABS/PP
Trumpet:	4Q3W
Ultrasonic vibration:	2.4MHz

## Package



6

## TROUBLESHOOTING

Please refer to the sheet below when the unit fails to work.	
Fail to turn on the unit	Is there enough water in the tank? --Add water to the tank. Is the power cord connected properly? --Disconnected, check cables and re-connect carefully. Does water amount exceed the MAX line? --Reduce the water amount and make sure it is below MAX line.
Turn off suddenly when it works	Does water amount exceed the MAX line? --Reduce the water amount and make sure it is below MAX line.
No mist or abnormal mist	Not enough water or too much water? --Add water to the tank but not fill over 350ML MAX line. Dirt on the ultrasonic atomizer? --Please refer to maintenance instructions to clean the unit. Too much dirt on the air intake? --Please use the brush to clean the air intake part.
Water leakage from product	Low temperature or high humidity? --Under these conditions, the mist may condense quickly into water droplets. Please wipe them up.

7

## PRECAUTIONS

Please read the following safety precautions carefully before using the device. The safety precautions listed below are designed to prevent you and others from prevent product damage.

Warning: This may result in serious injury.

Do not allow children and infants to touch the device, wrapping the power cord incorrectly connected to the child's neck may cause Death by suffocation.

- Please use the standard adapter on the unit
- Do not disassemble, modify or heat the unit.
- Avoid falling or hitting hard.
- If the machine has smoke, odor or any abnormal situation, please stop using immediately.
- Do not touch any part of the device with wet hands.
- Do not allow metal objects (such as needles, keys) to touch terminals or plugs.
- Do not cut, damage, modify the power cord or place heavy objects on the power cord. Failure to do so may result in electric shock or fire.

Note: May cause product damage.

- Do not allow liquids or foreign objects to enter the unit. Otherwise, irreparable damage may be caused to the device.
- Please unplug the unit when not in use.
- While it's working, don't overwrite anything on the unit.
- Please place the unit in a safe place to prevent others from tripping over the power cord, otherwise it may cause injury or damage to the unit.
- Avoid using the machine in the following places:
  - Direct sunlight, high temperature or humid, dusty places.
  - Stay away from electronic devices such as TV and audio equipment.
  - Stay away from places with strong vibrations.

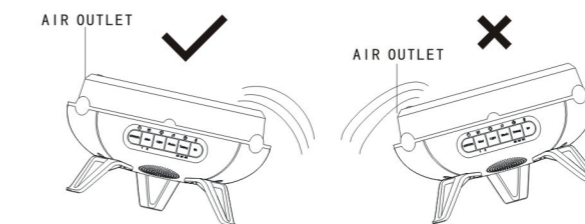
8

## MAINTENANCE

After using 5-6 times or 3-5 days, please clean the product as follows:

1. Turn off the power and disconnect the DC adaptor.
2. Pour out any remaining water completely in the tank. Do not pour out water from the air outlet side. (Fig. 1)
3. Put a small amount of detergent diluted in the water. Then use a clean cloth dip in the water and wipe up the unit gently. If there is any dirt in the inner side of tank, please clean it.
4. Never use medical diluent, alcohol during maintenance. Or it may cause product damage and erase various signs on the product.

Note: please use neutral detergents.



9

## WARM TIPS

- Please use other container to add water. Don't fill in the tank from water-tap directly.
1. Pure essential oils or oils which can be soluble into water are available for use. Please clean the unit as per the maintenance instructions before changing a new type of essential oil.
  2. It is quite normal that different humidity environment and temperature will affect the mist density.
  3. Do not let the mist spray to the furniture, clothes, wall directly.
  4. The essential oils may cause dye. Please use clean cloth wipe up if splashed out accidentally.
  5. To ensure the sanitation, please pour out the water completely and wipe up the unit with soft cloth after each use.
  6. If you don't use the unit for a long time, please pour out any remaining water completely in the tank and store it at dry place.
  7. When the power connects, the unit original state is OFF.
  8. If there is short of water in the tank, even though the power connects, the unit will shut automatically.

10