

Product User Manual

Scan the QR code to download free mobile APP



PC tracking Web: www.365gps.net

Android/IOS phone APP: **365GPS / GPS365**

Login ID: **IMEI number**(Printed on the sticker)

Password: **123456 or the last 6 digits of IMEI**

Attention:

1. Please comply with your local laws and regulations to use our GPS tracking devices and protect user's privacy, our GPS tracker are used for personal/pet/vehicle/belonging/assets security tracking only.
2. To protect your rights and interests, please don't leak your GPS IMEI # and password to anyone, and remember to modify the password after GPS tracker online.
3. The GPS tracker need to communicate with your local telecom operators by GSM+GPRS network, we are not responsible for the GPS communication delay.

Main feature:

- Network: GSM 850/900/1800/1900MHz, support GPRS Class 12, our tracker is able to work with TCP/IP protocol server(you need to configure your server)
- Positioning methods: GPS + AGPS + Wifi(optional) + LBS
- Tracking system: APP + Web + SMS
- Track + historical trace playback
- Voice recording + pick up + Sound call back
- Support one/two ways SOS communication(GPS SIM card airtime is required), similar like phone talking
- Geo-fence
- GPS location time:

Cold Boot-38s(Open sky)

Warm Boot-2s(Open sky)

The specific time is affected by the environment

- GPS location accuracy: within 10 meters outdoor(may be affected by the environment)
- Wifi location accuracy: within 50 meters(optional for some models)
- LBS location accuracy: above 100 meters
- GPS tracker Working temperature: -20°C ~ 45°C
- GPS tracker working humidity: 5% ~ 95%

1、Preparation work

1. Please prepare a nano SIM card which support both GSM and GPRS network, without GPRS, the GPS can not online in our APP/Web, and SIM card with GSM only can only track our tracker via SMS command.

For new SIM card, you can put it in your phone to active it and check the GPRS data function, it's better to set off the **PIN code** of the SIM card

2. Please make sure the GSM SIM card for GPS tracker is able to make a regular phone call and show the phone # when you make a phone calling so that you can use the GPS tracker to make SOS emergency phone calling and realize the pick up function. (If don't use SOS, a **regular SIM card with GPRS data is enough**)

Remind: Our GPS tracker is likely to consume about 30MB GPRS data per month.

3. Download and install our free mobile APP in your phone.

2、 Power on the GPS and make GPS online

Reference Photo as below:



Open the GPS tracker cover and Insert the SIM card

Power On: long press power key for 3seconds(3 LED will light up together and then blinking)

Power off: long press for 9 seconds (3 LED will light up then off)

Attention:

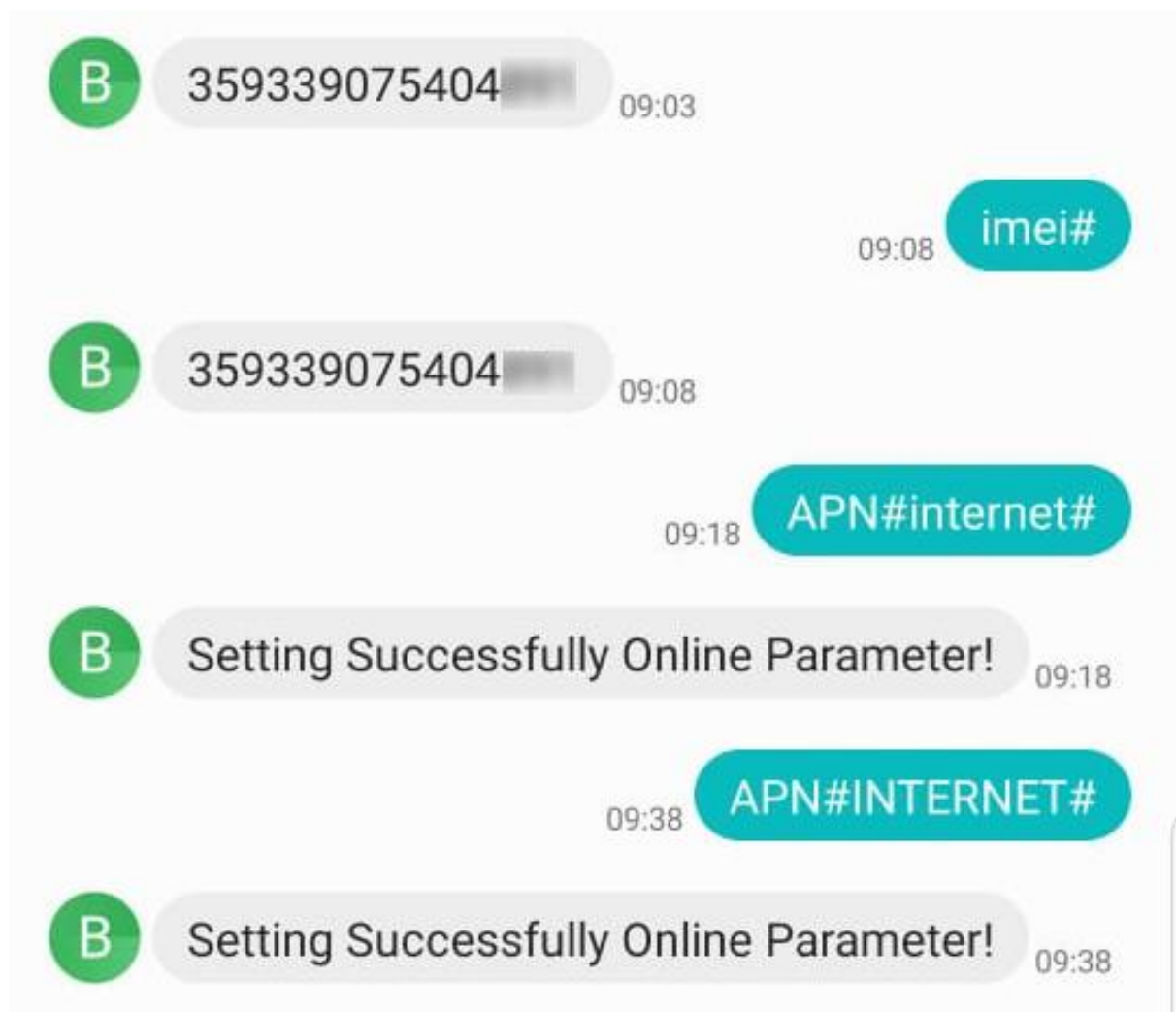
After the GPS tracker power on for 2 minutes with 3 LED blinking, you may meet the following conditions:

Condition A: if the yellow LED blinking slow, that means GPS is online, please use APP GPS365/PC web to track it directly.

Condition B: if the yellow LED blinking fast, please send sms command ""imei#" to the tracker SIM card, after the GPS tracker response your phone with correct 15 digits imei #, then please send SMS command to set APN:

(please put your GPS tracker SIM card in your phone to get the correct APN parameter if necessary)

Reference photo is below:



APN settings: “APN#parameter#account#password#
If your gps sim card don't have account and password,
then send “APN#parameter#” only.

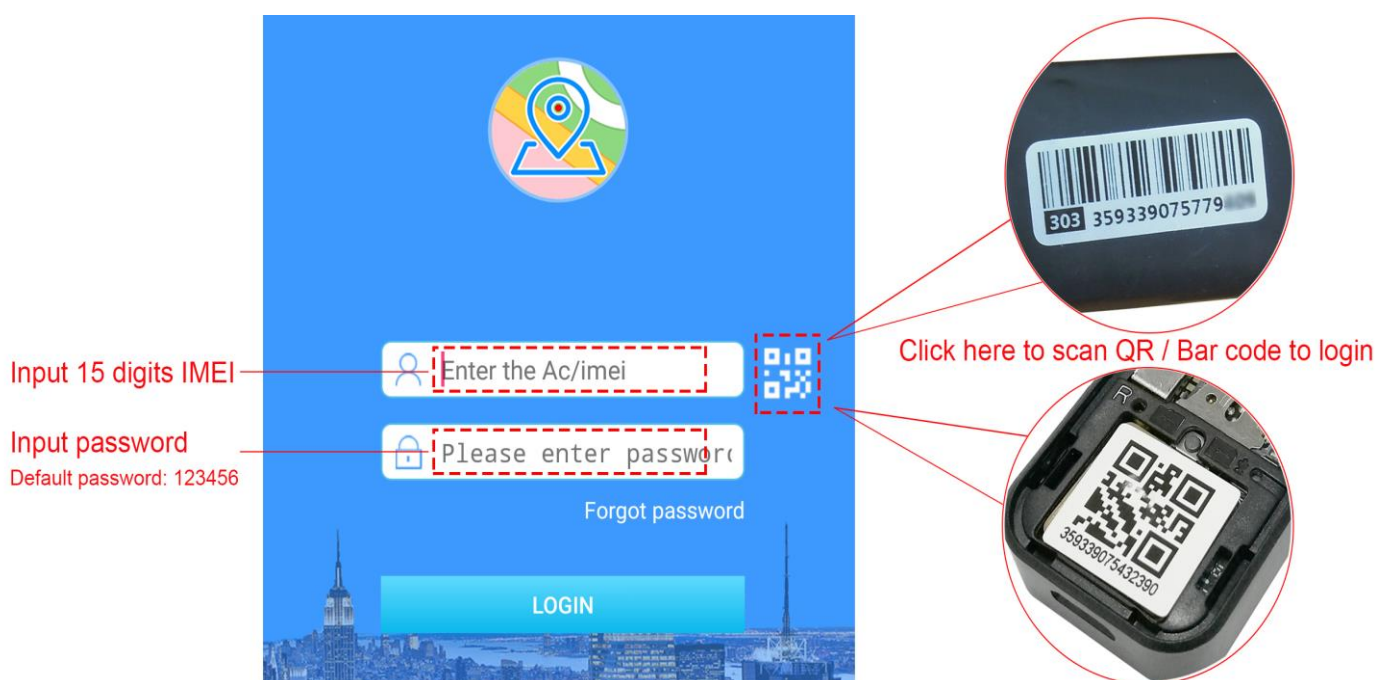
Condition C: if the yellow LED don't blinking, that means the wrong/invalid sim card, please change new sim card which support GPRS data connection function.

LED light	Function	Blinking slow	Blinking fast	LED off/don't blinking
Red	Battery level	Battery up to 30%	Low battery	Power off/sleep mode
Yellow	GSM signal	GPS tracker online	GPS tracker offline	Invalid SIM/sleep model
Blue	GPS Signal	GPS online	Searching GPS	Power off/sleep mode

3、 Login the GPS tracker in APP/Web

When the GPS tracker yellow LED blinking slow, it means GPS tracker is online and be ready to be tracked by phone APP/PC web:

There is a QR code sticker include 15 digits IMEI with each unit device, in the APP login page, please scan the QR code or input the IMEI # manually to login the APP.

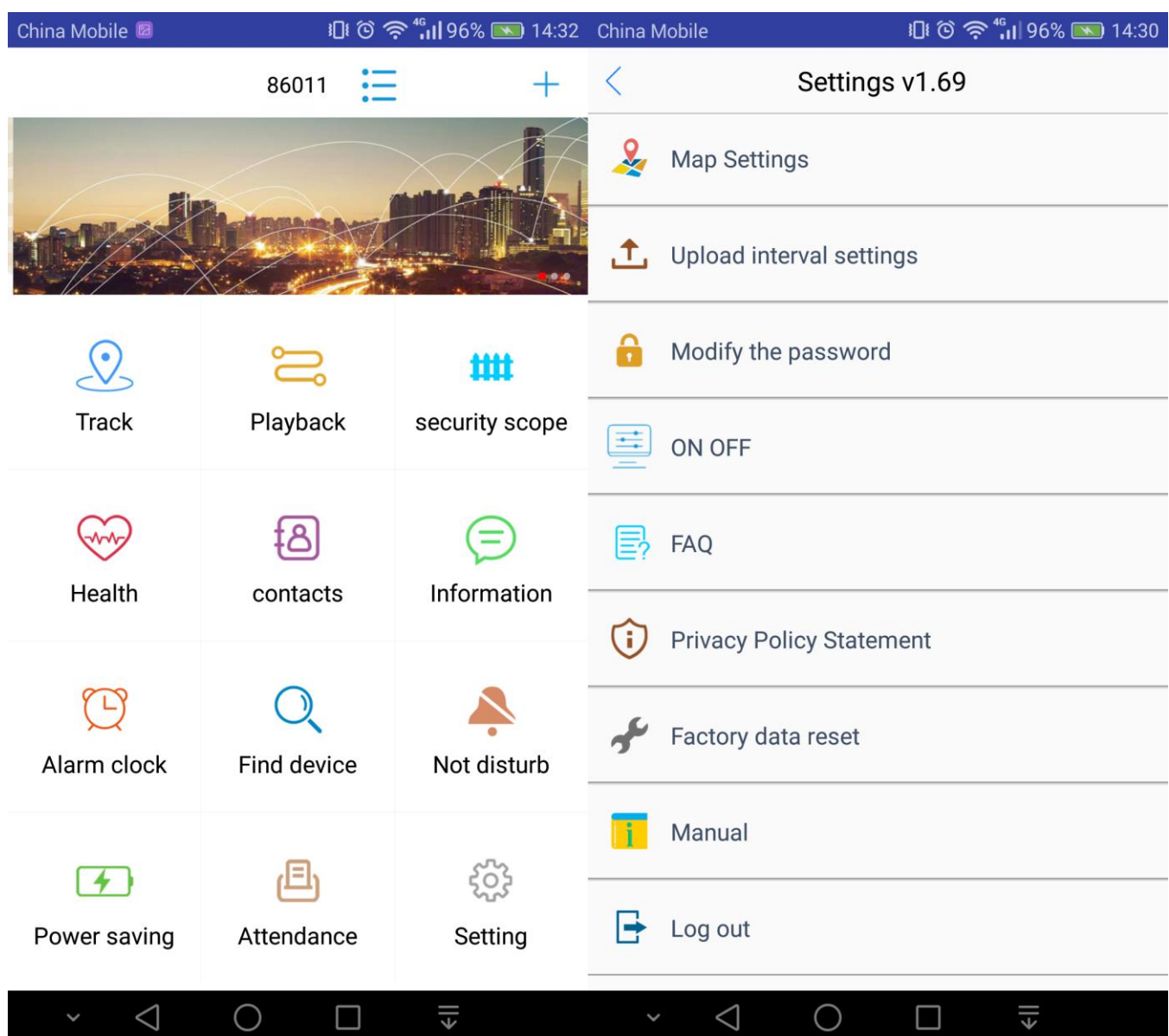


Login ID: IMEI number

Password: 123456 or the last 6 digits of the IMEI

After you login the APP with correct IMEI # and password in correct ways, the APP will turn to the main user interface automatically

4、 Main Functions:



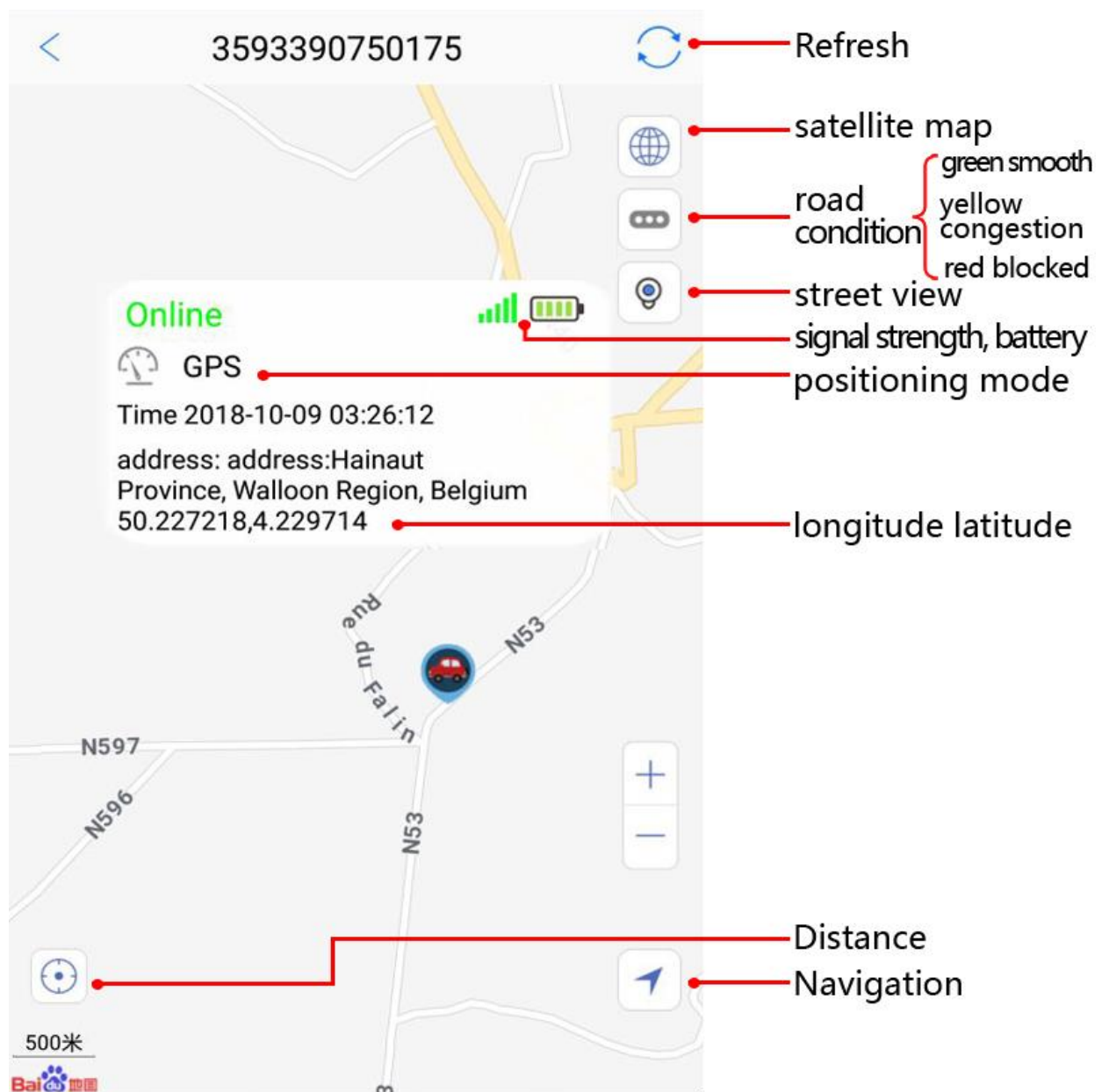
Our APP support multi-language, easy to use and

integrated several useful function and tools, there may be a bit UI difference due to APP version upgrading.

You can also setup your GPS tracker in “Setting” option

A. Track

Our mini GPS tracker support 3 different positioning methods:

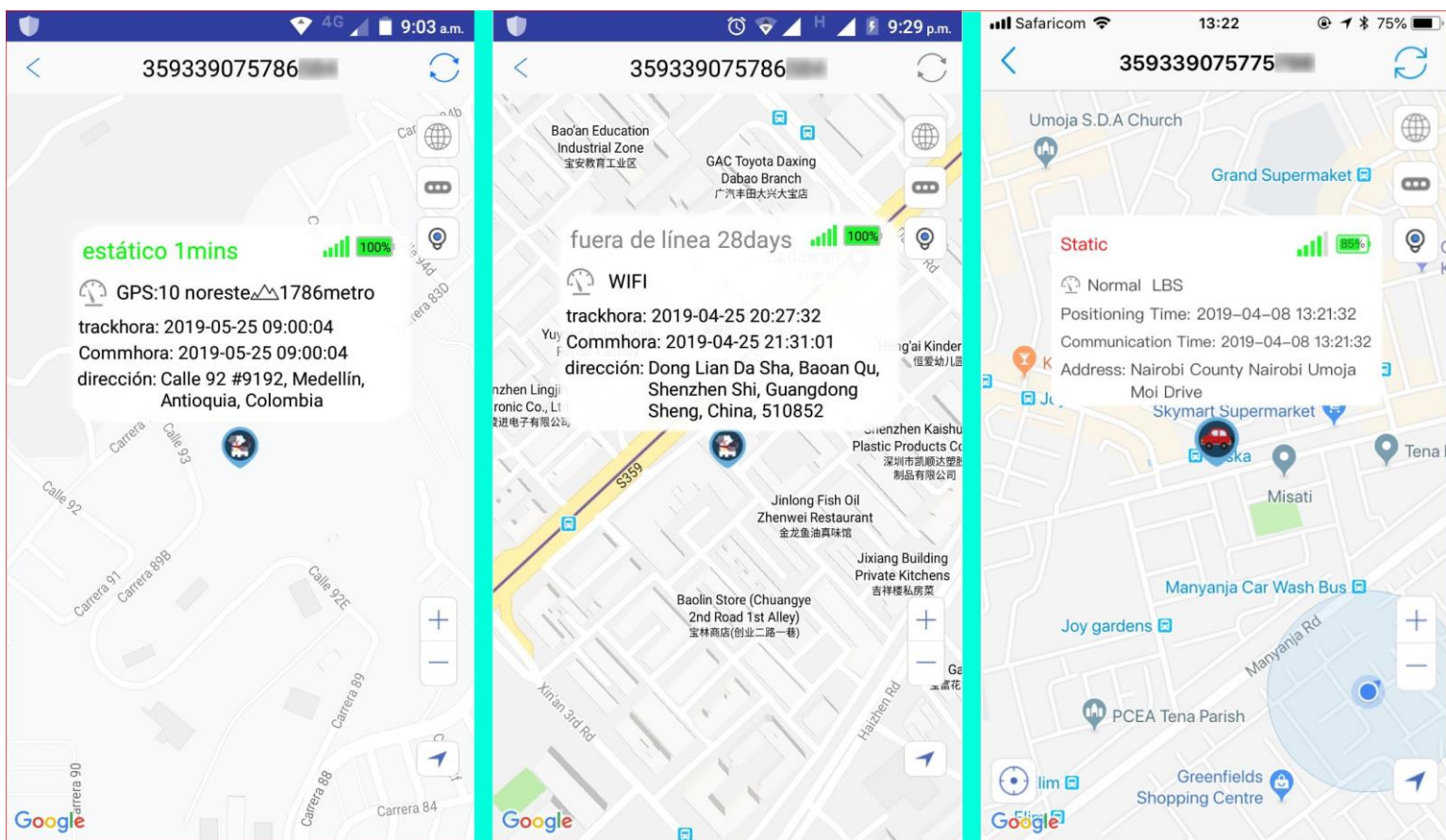


A: GPS positioning: when the GPS tracker stay in good GPS signal environment, for example outdoor, the GPS tracker will

capture satellites GPS signal and show you a accuracy GPS location on the map.

B: Wifi positioning: if you using GPS tracker bad GPS signal environment, but multiple wifi signal is available, for example: in your home/office/mall, the GPS will capture the wifi router IP address, analysis the geometric center and show the wifi location on the map. (in some countries, wifi location was forbidden and don't work, for example: Germany)

C: LBS positioning: when both GPS and Wifi signal are not available, the tracker will offer a general location of the geometric center according to the nearest GSM signal towers around it and show that location on the map.



GPS Location

Wifi Location

LBS location


GPS tracker location accuracy:

GPS: about 10 meters outdoor

Wifi: about 50-500 meters. Attention that wifi location visits telecom carrier's database to get location , in some countries' the carriers' database not open to the public, maybe wifi location can't work, for example Germany.

LBS: above 100 meters. Depends on how many Base Station Towers around the GPS tracker. Normally, if the tracker stay in the city, the LBS location accuracy will be much more accurate than that stay in the countryside.

Remind: you can turn off LBS/GPS location function to save battery if it's necessary.

 Power saving

set the corresponding function to open or close the device

LBS		<input checked="" type="checkbox"/>
GPS		<input checked="" type="checkbox"/>
On	<input type="text" value="00:00"/>	<input type="checkbox"/>
Off	<input type="text" value="00:00"/>	<input type="checkbox"/>
Turn off GPS and data upload		<input type="checkbox"/>
Time	<input type="text" value="00:00"/> - <input type="text" value="00:00"/>	
<input type="button" value="SAVE"/>		

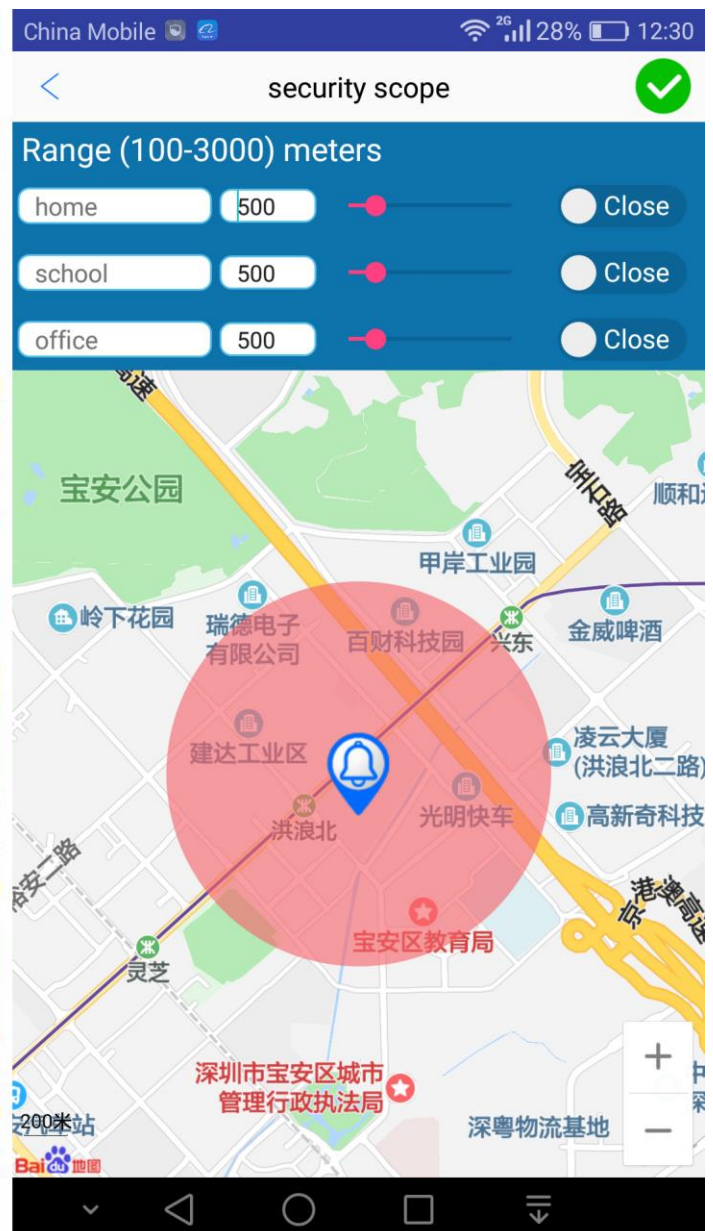
B. Playback and Geo-fence

A: Playback:

Please choose the start time and end time and other options in the APP to check the historical trace of your GPS tracker and show it on the map as below.

B: Geo-fence:

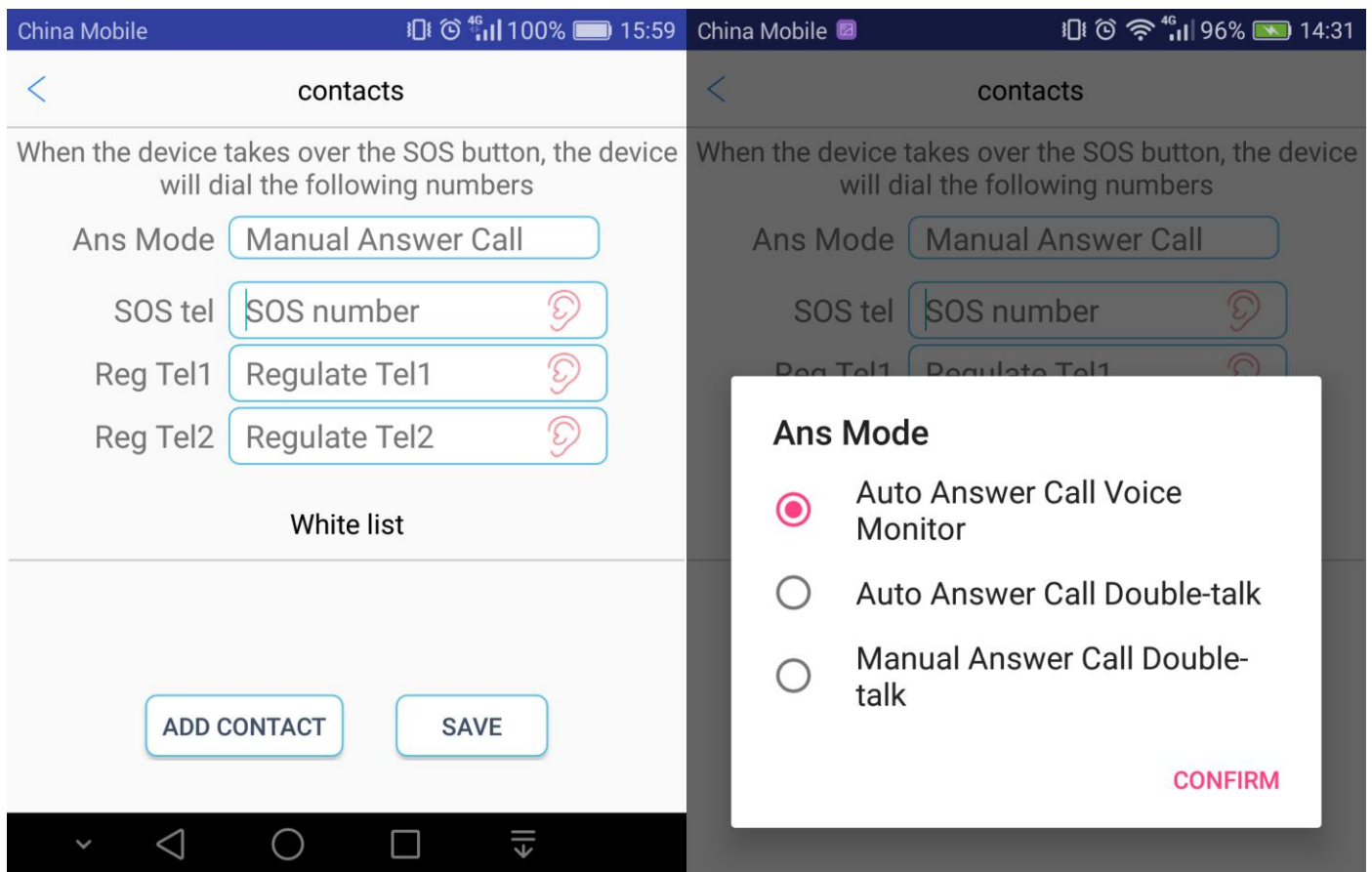
You can set a security range on the map in your app, once your GPS tracker out of the preset safe range, you will get alarm reminder.



C. Health(Valid for GPS bracelet tracker only)

D. Contact(SOS and pickup)

Please set the SOS and pick up tel #(your phone #) in the APP, then long press the tracker power key for 3 seconds till you heard the ringtone “Dingdong”, the tracker will call the preset SOS phone # automatically.



Before presetting the SOS phone # in APP, please make sure there's **airtime** in your GPS tracker SIM card.

- a:** You can preset the SOS panic calling answer mode;
- b:** You can preset maximum 3 group SOS phone # in the app, “SOS tel” is the main SOS phone #, “regulate Tel1” and “regulate Tel2” are the spare SOS phone #;
- c:** After you preset all the 3 SOS phone #, long press the SOS button for 3 seconds, the GPS tracker will send SOS to the

SOS tel firstly, if SOS tel don't response, it will dial the "regulate Tel1" automatically, if "regulate Tel1" without response, it will dial the "regulate Tel2";

Caution: If you don't need the SOS function, you don't need to preset the SOS phone # in the APP, then the SOS panic calling function will not work.

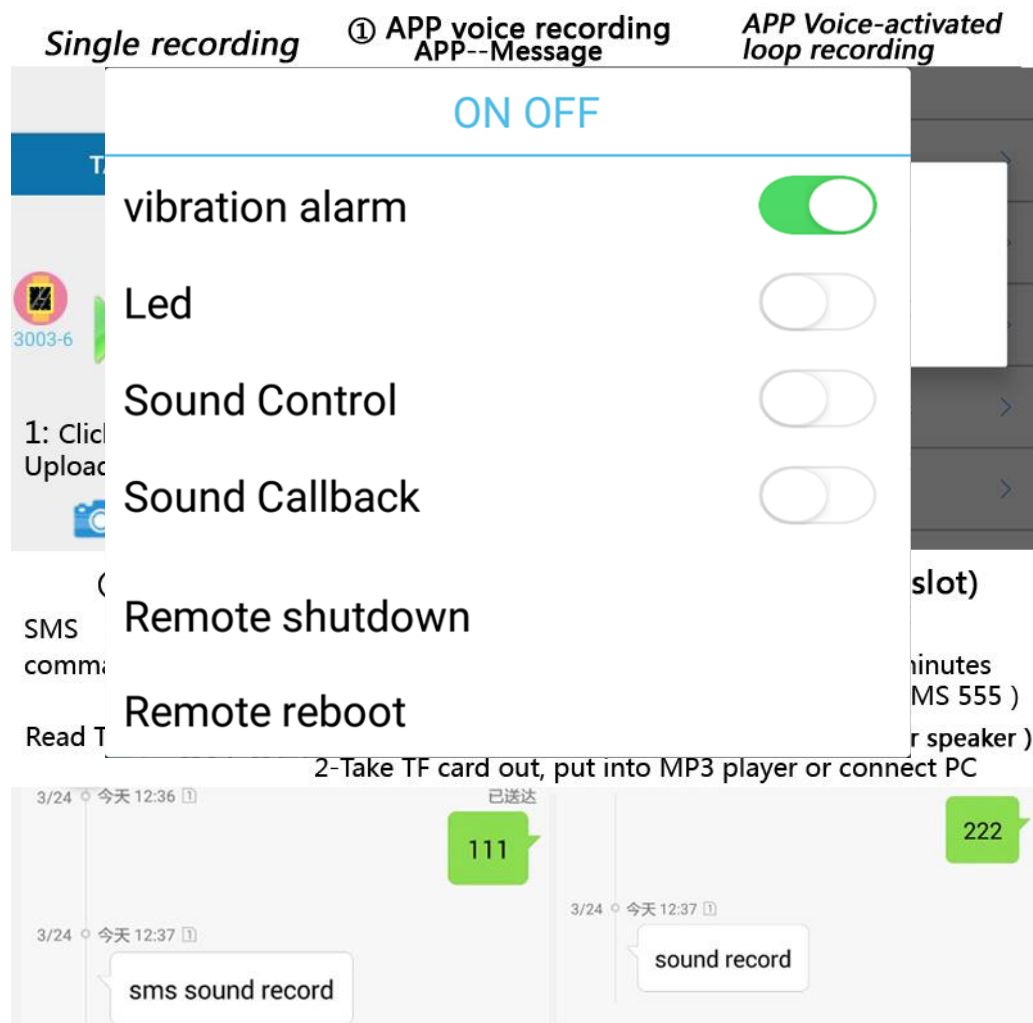
Pickup = Contacts -- Answer Mode: Auto Answer Call Voice Monitor

Reminder: the GPS tracker will answer your call automatically in sicient mode for you hearing the ambient sound arond the tracker.

E. Information(Voice Recorder)

You can click the MIC icon in the App to send voice recording request to the GPS tracker to get voice clips around it, it will send back voice clips soon.

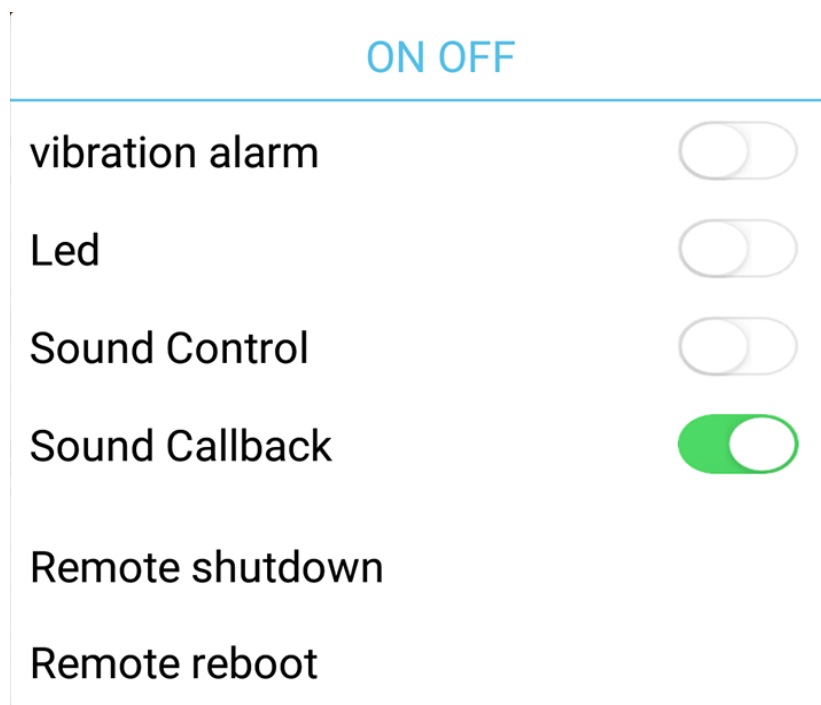
Attention: due to your GPRS communication with your local SIM card operator, the voice clips may be have some delays after you sent the request.



F. Vibration Alarm

Please enable “Push Notification” and “Vibration alarm” in the setting menu, if someone moved your GPS tracker(for example, you put the tracker on your office/home), the tracker will send vibration alarm push message to your phone timely.

G. Sound Callback



Please enable “Push Notification” and “Sound callback” in the setting menu, **GPS tracker SIM card airtime is required.**

Send SMS command:

“ **000 #number#number#number#**” to bind callback phone #
if someone there's any sound reached 20-30db around your
GPS tracker(for example, you put the tracker at home/with your
assets), the tracker will call your phone # automatically.

5、LED lights

LED light	Function	Blinking slow	Blinking fast	LED off/don't blinking
Red	Battery level	Battery up to 30%	Low battery	Power off/sleep mode
Yellow	GSM signal	GPS tracker online	GPS tracker offline	Invalid SIM/sleep model
Blue	GPS Signal	GPS online	Searching GPS	Power off/sleep mode

Red: GPS battery level LED

Yellow: GSM signal LED

Blue: GPS signal LED

When the GPS tracker run out of battery completely(battery voltage below 3.7V), the 3 LED will keep lighting while you charge the battery, GPS tracker will power on automatically when battery voltage reached 3.7V(yellow and blue LED will blinking), the red LED will blinking after battery fully charged.

6、 Related SMS commands

6.1 Inquire IMEI No.: “imei# “,if you GPS tracker imei sticker broken/get lost, you can send this SMS command to get the correct 15 digits GPS tracker IMEI #.

6.2 Restore default password: “pwrst”

6.3 Restore to the factory settings: “1122”

6.4 Set Upload interval: “time#minute” (minute range 1-120minute); “md#second”(second range 10-60seconds),normally, the shorter interval will cause higher battery consumption level.

6.5 Turn on/off LED: “LED#on , LED#off”

6.6 APN settings: “APN#parameter#account#password#”

When your GPS tracker yellow LED blinking fast, you need to send APN SMS command to set APN to make GPS online.

if there's no account and password, you can send
“**APN#parameter#** “ only.

6.7 Remote Restart: “sysrst”

6.8 Vibration Alarm: “6666#on# / 6666#off#”

6.9 Modify IP address(Attention: 2 different methods)

a - Modify IP: “DOMAIN#domain name or IP#Port ID#” (will
return to default 365gps server if the new server unavailable)

b - Modify a fixed IP: SERVER#domain name or IP#Port ID# (it
will not return to 365gps server)

6.10 Heartbeat Packet Time: heartbeat#No. #(no.=second)

6.11 Turn off GPRS data and location function: link#0#

6.12 Turn on GPRS data and location function: link#1#

6.13 Control Auto Power On/Off:

"pwonoff#day,hour,minute#day,hour,minute"

(for example: pwonoff#0,0,10#0,2,0 -- mean: the GPS tracker
will work for 10 minutes then power off and after 2 hours later it
will power on automatically again.)

7、SMS operation

000#number#number#number# (binding three phone #), this
SMS command can be used for sound callback.

111 (TF Card Voice Recording 10 minutes pause)

222 (TF Card Voice Recording 10 minutes pause, auto
recording 10minutes again if any voice)

333 (voice-activated dial-back call to binding numbers)

444 (delete all contents of memory)

555 (turn off all features)

666 (vibration alarm SMS to binding number)

777 (vibration alarm call to binding numbers)

888 (play the memory recording --- this require a speaker)