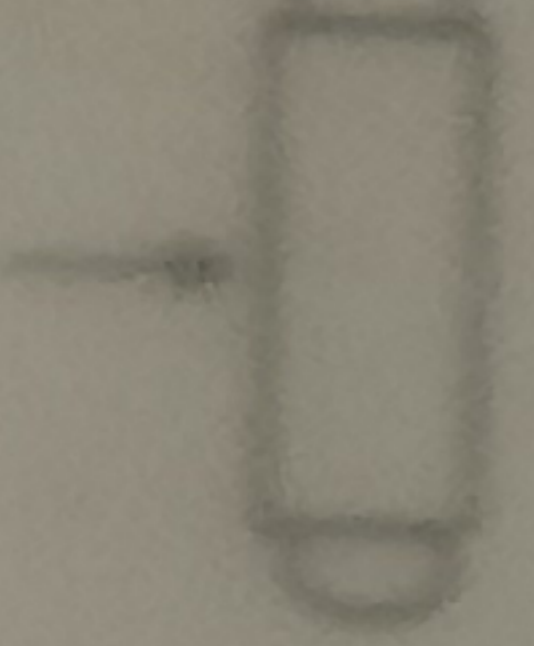


free ending
of the rope



MAXIMUM LIFESPAN OF THE DEVICE

The maximum lifespan of the device is 10 years from the manufacture date.

PERIODIC INSPECTIONS

The device must be inspected at least once every 12 months from the date of purchase and training required for personal protective equipment operators is more frequently than once every 12 months. Every periodic inspection must be recorded.

ATTENTION The device maximum lifetime depends on the use conditions. Avoid contact with sharp edges, exposure to extreme temperatures or mechanical shocks.

WITHDRAWAL FROM USE

The device must be withdrawn from use immediately and destroyed if it is damaged or if the inspection reveals a defect.

CONTENT OF THE DEVICE IDENTITY LABEL

PROT-40

WORK POSITIONING DEVICE

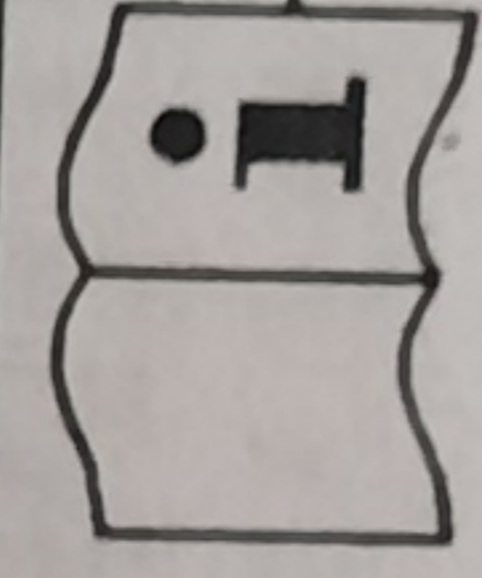
XPPDPROT40XXX

LENGTH: xx m

Serial number: 00003

Date of manufacture: 02/2004

CE 0082



EN 358:1999

Lanex

re

numb

month/y

CE marking

controlling manufac

number / ye