

O'2NAILS | 非妙®

单指彩绘指导手册

Single Nail Printing
Instruction Manual

使用产品前请仔细阅读本指导手册，并妥善保管。

Please read this Instruction Manual carefully
before using this kit and keep it properly for future reference.

O2Nails APP下载

手机或平板通过扫描以下二维码下载O2Nails APP



O2Nails



扫码下载APP

(支持iOS和Android系统)



App Store



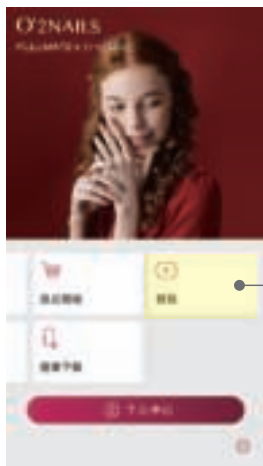
搜索“O2NAILS”



下载

通过APP查看配套产品应用资料

进入app教程模块，选择“美甲彩绘机配套产品简介”，查看需要学习的产品应用资料。



O2Nails Application Download



App Store



Search "O2NAILS"



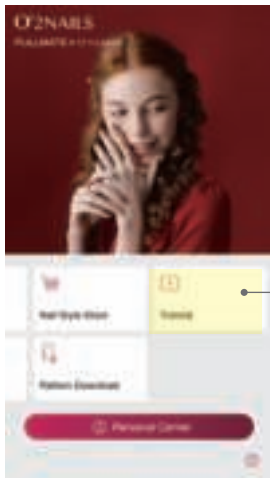
Download

or

Download from official website
WWW.O2NAILS.COM.

View the nail printer consumables training material in application

Enter application Tutorial, select Nail Printer Consumables Training Material.



下载图库

1. 点击图案下载；
2. 输入图案下载码；
3. 点击立即下载。

萌萌甲专用图库下载授权码
38732019

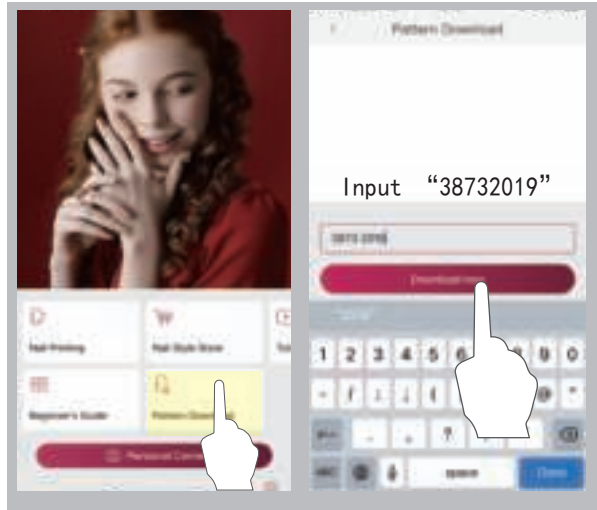


Download Pattern

1. Click "Pattern Download "
2. Input Pattern Download Code
3. Click "Download now "

Authorized Download Code of
Budding Nail

38732019



产品简介

进入app教程模块，选择“美甲彩绘机配套产品简介”，查看以下产品学习并掌握正确使用技巧。



清洁包

用于清洁指甲面上的油脂、灰尘或擦洗浮胶。



可剥离指甲保护贴

隔离真指甲表面与甲油胶接触，健康环保，防水且牢固持久，适用不同大小甲面尺寸，易贴易撕。

颜色：白色

Product Introduction

Enter application Tutorial, select Nail Printer Consumables Training Material, watch the usage of the following products.



Nail Cleaner Pad

Clean nail or clear off residual floating gel.



Peelable Nail Guard Sticker

A healthy sticker that can effectively protect the nail and easy to remove it at any time and anywhere.

Color: White

产品简介

进入app教程模块，选择“美甲彩绘机配套产品简介”，查看以下产品学习并掌握正确使用技巧。



PG打印涂层胶 (PG4)

一种适用于美甲彩绘机的必备耗材，在打印前涂于指甲面上，用于吸附墨盒喷出的水性墨水，让打印图案更艳丽和清晰。它是一种特殊的甲油胶，呈白色乳胶状，照灯前具有良好的涂刷性和吸水性，照灯固化后，具有良好的防水性。

注意避光储存，使用后即刻拧紧瓶盖。

颜色：白色

容量：10ml/瓶



免洗封层胶

一种适用于美甲彩绘机的耗材，在美甲最后一步涂于指甲面上，用于巩固美甲图案和样式，让打印图案持久耐看。

颜色：透明

容量：7ml/瓶



卡片式光疗灯

光疗灯是美甲过程中不可缺少的烘干固化仪器，主要功能是快速固化UV甲油胶/延长胶/LED甲油胶；连接USB接口供电，点击开关键开机，再次短按开关键切换定时时间：30秒/60秒/90秒。

颜色：黑色/白色

输入电源：5V/0.5A

Product Introduction

Enter application Tutorial, select Nail Printer Consumables Training Material, watch the usage of the following products.



Print Gel (PG4)

Print Gel is a necessary consumable for nail printer. It is applied to the nail surface before printing, using to absorb the water-based ink ejected from the ink cartridge, making the printed pattern more beautiful and more clear. It is a special type of gel polish, which is white latex. It has good brushability and water absorption before curing. After curing, it has good water resistance.

Pay attention to storage away from light, and tighten the cap immediately after use.

Color: White

Capacity: 10ml/bottle



No Wipe Top Gel

A consumable suitable for a nail printer, which is applied to the nail surface in the last step.

It is used to consolidate the nail patterns and styles, making the printed patterns are shining and durable.

Color: Transparent

Capacity: 7ml/bottle



Card LED Light

The lamp is an indispensable drying and curing tool in the manicure process.

Its main function is to quickly cure UV gel polish / extension gel polish / LED gel polish. Powered by USB interface, click the switch to power on, and press the switch again to switch to different timing time : 30 seconds / 60 seconds / 90 seconds.

Color: Black / White

Power Supply : 5V/0.5A

【单指彩绘】操作及流程

[Single Nail Printing] Operation and Process

第一步 彩绘前准备工作

Step one: Preparation before Printing

1. 修甲、清洁甲面，去除指甲面油脂。

Shape and clean your nail, remove grease from the nail.



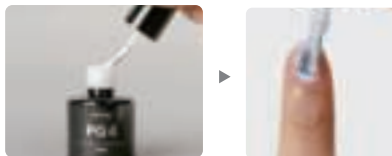
2. 贴指甲保护贴

Stick Nail Guard Sticker.



3. 涂刷PG4打印涂层胶

Apply Print Gel evenly on nail surface.



此步骤不要照LED灯!!

No need for LED light curing!!

【单指彩绘】操作及流程

[Single Nail Printing] Operation and Process

第二步 选图

Step two: Select A Pattern

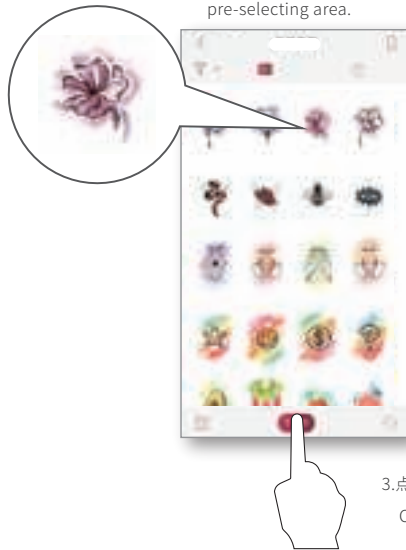
1. 进入“美甲彩绘”。

Enter "Nail Printing".



2. 选择美甲图案到预选区。

Select pattern to the pre-selecting area.



3. 点击下一步。

Click Next.

【单指彩绘】操作及流程

[Single Nail Printing] Operation and Process

第三步 完成打印图案

Step three: Complete A Pattern Printing

1.手指放进美彩绘宝。

Put your finger in.



按压滑块固定好手指，保持甲面水平，使指甲面完全处于视频窗口内。

Press the slider to fix the finger and keep the finger straight, and ensure the nail surface is completely inside the viewing window.

手指摆放位置示范(通过屏幕观察手指)：

Demonstration of finger placement (observe finger through screen):

放入手指前
Before putting
the finger inside



点击,打开摄像头,
使观察窗处于打开状态
Click it to open the camera,
and make the observation
window open

放入手指后
After putting
the finger inside



指甲后缘靠近红色虚线框内的下方线条，
指甲前缘(指尖)可以超出红色虚线框上方线条

The rear edge of the nail is close to the downmost line of the red dotted frame, and the front edge of the nail (fingertip) can exceed the uppermost line of the red dotted frame.

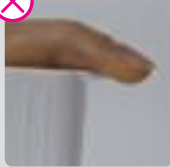
【单指彩绘】操作及流程

[Single Nail Printing] Operation and Process

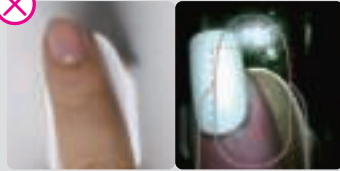
手指摆放位置示范 Finger Placement Demonstration



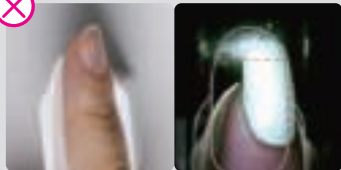
手指上翘
The nail is up



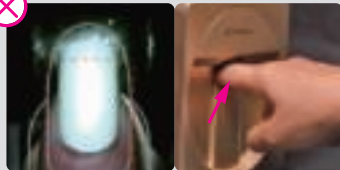
手指下压
The nail is down



位置歪斜
The nail is slant



位置歪斜
The nail is slant



固定座未弹起
The finger holder doesn't pop up



不在可打印区域
Beyond printing area



手指放平, 避免墨盒刮蹭甲面
Keep the finger flat to prevent the ink cartridge from scratching the nail surface

【单指彩绘】操作及流程

[Single Nail Printing] Operation and Process

第三步 完成打印图案

Step three: Complete A Pattern Printing

2. 选择一个美甲图案。

Click pre-selected pattern.



3. 点击OK。

Click OK.

注：① 按住图案可拖动

② 可双指放大缩小

③ 按住图案四周边缘可移动边线微调

Remark:

① Hold the pattern to move

② Zoom in and zoom out with two fingers

③ Press and hold the edges around the pattern to move the edge to fine-tune

手指保持稳定，等待25-30秒，机器停止后，手指拿出。

Keep your finger steady and wait for 25-30 seconds, when the machine stops, take your finger out.

【单指彩绘】操作及流程

[Single Nail Printing] Operation and Process

第四步 涂封层保护图案

Step four: Apply Top Gel to Protect the Pattern

1. 下压手指固定座并移出手指，
注意避免刮花图案。

1. Press down on the finger holder and take out
your finger, take care to avoid scratching the pattern.

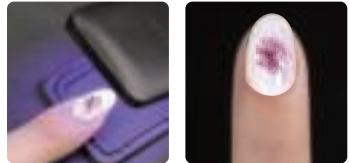
平移出手指时，注意手指下部与固定座表面
保持一定接触并缓慢移出，避免指甲表面碰
到或刮到任何机器部位，防止弄花图案。

When taking your finger out, the lower part of the
finger keeping a certain contact with the surface of
the finger holder and slowly moving it out, to avoid
touching or scratching the nail surface to any part of
the machine, to prevent the pattern from getting
embossed.



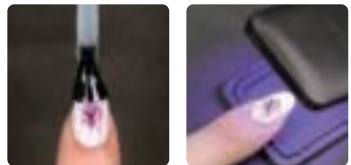
2. 照灯60秒 (深色图案照干时间较长)。

Cured by LED light for 60 seconds.
(Dark color needs more time to be dried)



3. 涂封层胶，照灯60秒，完成。

Apply Top Gel, and cured by LED light
for 60 second, finish.



O'2NAILS | 非妙®

GUANGZHOU TAIJI ELECTRONIC CO., LTD. (Manufacturer)
E1, 25/F, Everbright Bank Building, No.685-691 Tianhe North Road, Tianhe District, Guangzhou,
Guangdong Province, China.
Hotline : (+8620) 38732006 Email: service@cybermail.com
WWW.O2NAILS.COM

制造商：广州天河高新技术产业开发区太极电子有限公司 地址：广东省广州市天河区天河北路685-691号光大银行大厦25层E1
服务热线：4000981911 网址：WWW.O2NAILS.COM

All information and data listed on this manual are for reference only, the final explanation right belongs to this company.

本手册上所列举的信息、数据仅供参考，最终解释权归本公司所有。

2020-05