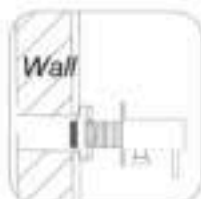


## Installation

**PREPARATION:** A. Turn off the water valve. B. Flush toilet to drain tank completely. C. Take out existing water pipe.

### Installation:

A. Install shut off valve.

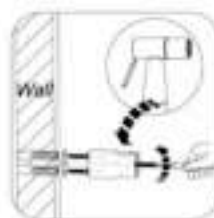


B. Contact bidet and hose.



**NOTE: THE SHUTOFF VALVE MUST BE SHUT OFF AFTER EACH USE.**

Failure to turn off after each use may cause flooding and water damage.



C. Install holder on the wall

1. Punch holes in the wall in appropriate place.
2. Place the expanding nut in the hole and fix the wall plate on the wall with screw 1.
3. Fix the Bidet Holder plate on the wall with screw 2.
4. Put the Bidet on the holder.

D. Normal Use



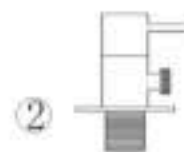
## Installation Instructions

**Warning!!** When installing this unit be sure that the water supply valve by your toilet is fully turned off and that there is no flow/leak of water before removing any plumbing components from your toilet. Failure to do so could result in flooding and water damage.

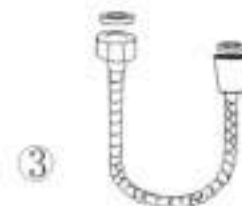
### Parts List



Bidet Holder



Shut off Valve  
(With a decorative plate)



Stainless Steel  
Supply Hose



Expanding nut  
(Use to fix the bidet  
holder plate on wall)



Screw ①  
(Use to fix the bidet  
holder plate on wall)



Bidet Holder

