

VGA/DVI/HDMI EDID Emulator
VC010 / VC060 / VC080

User Manual



EMC Information

FEDERAL COMMUNICATIONS COMMISSION INTERFERENCE STATEMENT

This equipment has been tested and found to comply with the limits for a Class A digital device, pursuant to Part 15 of the FCC Rules. These limits are designed to provide reasonable protection against harmful interference when the equipment is operated in a commercial environment. This equipment generates, uses, and can radiate radio frequency energy and, if not installed and used in accordance with the instruction manual, may cause harmful interference to radio communications. Operation of this equipment in a residential area is likely to cause harmful interference in which case the user will be required to correct the interference at his own expense.

FCC Caution: Any changes or modifications not expressly approved by the party responsible for compliance could void the user's authority to operate this equipment.

CE Warning:

This is a class A product. In a domestic environment this product may cause radio interference in which case the user may be required to take adequate measures.

RoHS

This product is RoHS compliant.

Safety

This product has been classified as Information Technology Equipment.

SJ/T 11364-2006

The following contains information that relates to China.

部件名称	有毒有害物质或元素					
	铅	汞	镉	六价铬	多溴联苯	多溴二苯醚
电器部件	●	○	○	○	○	○
机构部件	○	○	○	○	○	○

- : 表示该有毒有害物质在该部件所有均质材料中的含量均在SJ/T 11363-2006规定的限量要求之下。
- : 表示符合欧盟的豁免条款, 但该有毒有害物质至少在该部件的某一均质材料中的含量超出SJ/T 11363-2006的限量要求。
- ×: 表示该有毒有害物质至少在该部件的某一均质材料中的含量超出SJ/T 11363-2006的限量要求。



User Information

Online Registration

Be sure to register your product at our online support center:

International	http://eservice.aten.com
---------------	---

Telephone Support

For telephone support, call this number:

International	886-2-8692-6959
China	86-10-5255-0110
Japan	81-3-5615-5811
Korea	82-2-467-6789
North America	1-888-999-ATEN ext 4988
United Kingdom	44-8-4481-58923

User Notice

All information, documentation, and specifications contained in this manual are subject to change without prior notification by the manufacturer. The manufacturer makes no representations or warranties, either expressed or implied, with respect to the contents hereof and specifically disclaims any warranties as to merchantability or fitness for any particular purpose. Any of the manufacturer's software described in this manual is sold or licensed *as is*. Should the programs prove defective following their purchase, the buyer (and not the manufacturer, its distributor, or its dealer), assumes the entire cost of all necessary servicing, repair and any incidental or consequential damages resulting from any defect in the software.

The manufacturer of this system is not responsible for any radio and/or TV interference caused by unauthorized modifications to this device. It is the responsibility of the user to correct such interference.

The manufacturer is not responsible for any damage incurred in the operation of this system if the correct operational voltage setting was not selected prior to operation. PLEASE VERIFY THAT THE VOLTAGE SETTING IS CORRECT BEFORE USE.

Package Contents

The VC010 / VC060 / VC080 VGA/DVI/HDMI EDID Emulator package consists of:

- ◆ 1 VC010 / VC060 / VC080 VGA/DVI/HDMI EDID Emulator
- ◆ 1 RS-232 Configuration Cable
- ◆ 1 USB to DC Power Cord
- ◆ 1 User Instructions*

Check to make sure that all the components are present and that nothing got damaged in shipping. If you encounter a problem, contact your dealer.

Read this manual thoroughly and follow the installation and operation procedures carefully to prevent any damage to the unit, and/or any of the devices connected to it.

* Features may have been added to the VC010 / VC060 / VC080 since this manual was published. Please visit our website to download the most up-to-date version.

© Copyright 2012–2014 ATEN® International Co., Ltd.
Manual Date: 2014-04-10

ATEN and the ATEN logo are registered trademarks of ATEN International Co., Ltd. All rights reserved.
All other brand names and trademarks are the registered property of their respective owners.

Contents

EMC Information	ii
RoHS	ii
Safety	ii
S/J/T 11364-2006.	ii
User Information	iii
Online Registration	iii
Telephone Support	iii
User Notice	iii
Package Contents	iv
Contents	v
About this Manual	vii
Conventions	viii
Product Information	viii
1. Introduction	
Overview	1
Features	2
Requirements	3
Source Devices(s)	3
Display Device.	3
Cables	3
Components	4
Top View	4
Front View	5
Rear View	6
2. Hardware Setup	
Installation	7
Installing the RS-232 Controller	8
3. Operation	
Overview	9
EDID Panel Selection	9
EDID Learn Pushbutton	9
EDID Wizard	10
EDID Wizard Menu	10
Main Page	11
EDID Programming	13
Editing EDID Sets	14
EDID	15
Established Timings.	15
Standard Timings.	15
Detail Timing / Display Description	16
Monitor Description 2.	16
CEA	17

Display Support	17
Audio Data	18
Vendor Specific Data	19
Detail Timing / Display Description	19
Saving your Settings	20
About	20
Powering Off and Restarting	20

4. The Firmware Upgrade Utility

Introduction	21
Downloading the Firmware Upgrade Package	21
Preparation	22
Starting the Upgrade	23
Upgrade Succeeded	25
Upgrade Failed	25
Firmware Upgrade Recovery	26

Appendix

Safety Instructions	27
General	27
Technical Support	29
International	29
North America	29
Specifications	30
Limited Warranty	31

About this Manual

This User Manual is provided to help you get the most from your VC010 / VC060 / VC080 system. It covers all aspects of installation, configuration and operation. An overview of the information found in the manual is provided below.

Chapter 1, Introduction, introduces you to the VC010 / VC060 / VC080 system. Its purpose, features and benefits are presented, and its front and back panel components are described.

Chapter 2, Hardware Setup, describes how to set up your VC010 / VC060 / VC080 installation. The necessary steps are provided.


Chapter 3, Operation, explains the fundamental concepts involved in operating the VC010 / VC060 / VC080 via the front panel pushbuttons, remote controlled On-Screen Display (OSD), or through the RS-232 serial interface.

Chapter 4, The Firmware Upgrade Utility, explains how to use this utility to upgrade the VC010 / VC060 / VC080's firmware with the latest available versions.

An Appendix, provides specifications and other technical information regarding the VC010 / VC060 / VC080.

Conventions

This manual uses the following conventions:

- Monospaced Indicates text that you should key in.
- [] Indicates keys you should press. For example, [Enter] means to press the **Enter** key. If keys need to be chorded, they appear together in the same bracket with a plus sign between them: [Ctrl+Alt].
- 1. Numbered lists represent procedures with sequential steps.
- ◆ Bullet lists provide information, but do not involve sequential steps.
- Indicates selecting the option (on a menu or dialog box, for example), that comes next. For example, Start → Run means to open the *Start* menu, and then select *Run*.
-  Indicates critical information.

Product Information

For information about all ATEN products and how they can help you connect without limits, visit ATEN on the Web or contact an ATEN Authorized Reseller. Visit ATEN on the Web for a list of locations and telephone numbers:

International	http://www.aten.com
North America	http://www.aten-usa.com

Chapter 1

Introduction

Overview

With various monitors and video display devices available in the market, much emphasis is placed on how quickly video resolution is optimized to get the best picture quality. Storing the EDID (Extended Display Identification Data) of video output devices facilitates a video resolution “handshake” between the display monitor and the computer/source device. Installations that employ devices, such as switches, extenders and splitters that do not support EDID, between the video source and display monitor, may fail to take advantage of this feature.

The ATEN VC010 / VC060 / VC080 is a VGA/DVI/HDMI EDID Emulator, which is designed to emulate and store the EDID of a video display, providing constant and reliable EDID data for the a VGA/DVI/HDMI source device to efficiently optimize video resolution.

The VGA/DVI/HDMI EDID Emulator provides three flexible methods for selecting and switching between EDID configurations: Default Mode, Programming Mode, and Learning Mode. A user can quickly view, store and manage EDID settings using an easy-to-use EDID Wizard (see *EDID Wizard*, page 10). In addition, the information can also be directly captured via the EDID Learn Pushbutton (see *EDID Learn Pushbutton*, page 9) and selected manually in the VC010 / VC060 / VC080 top panel (see *EDID Panel Selection*, page 9).

The ATEN VGA/DVI/HDMI EDID Emulator is a convenient and handy tool that ensures smooth viewing experience for any video installation.

Features

- ◆ Superior video quality – HDTV resolutions of 480i, 480p, 720i, 720p, 1080i, 1080p (1920 x 1080); VGA, SVGA, XGA, SXGA, UXGA and WUXGA (1920 x 1200)
- ◆ EDID Wizard – provides users with an easy way to manage EDID settings
- ◆ Consumer Electronics Control (CEC) allows interconnected HDMI devices to communicate and respond to one remote control (VC080)
- ◆ EDID mode selection – Default, Learning, and Programming
- ◆ HDMI (3D, Deep Color), HDCP compatible (VC080)
- ◆ Supports Dolby True HD and DTS HD Master Audio (VC080 only)
- ◆ Automatically manages EDID communication between connected devices
- ◆ Employs signaling rates up to 2.25 Gbits in support of 1080p display
- ◆ Built-in LED indicator to easily identify the EDID settings being used
- ◆ Supports popular Wide Screen formats
- ◆ Fully compliant with DVI-Digital – supports transmission of Single Link and Dual Link signals (VC060 only)
- ◆ Intelligent DDC Channel Switch – HDCP bypass or EDID mode can be selected automatically (VC080 only)
- ◆ Hot pluggable
- ◆ Non-Powered – powered from VGA/DVI/HDMI video source device

Note: If the video source is not receiving enough power an external power cord should be connected.

Requirements

The following equipment is required for a complete VC010 / VC060 / VC080 installation:

Source Devices(s)

One of the following, depending on the unit you have:

- ◆ VC010: VGA device and HDB-15 connector with 3.5mm audio connector
- ◆ VC060: A DVI enabled source device
- ◆ VC080: HDMI Type A connector(s)

Display Device

One of the following, depending on the unit you have:

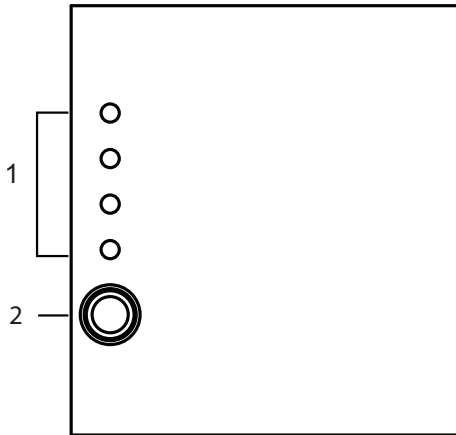
- ◆ VC010: A display device with a HDB-15 Female connector
- ◆ VC060: A DVI enabled display device
- ◆ VC080: HDMI display device or receiver with an HDMI Type A input connector

Cables

- ◆ Firmware Upgrade cable
- ◆ One of the following, depending on the unit you have:
 - ◆ VC010: VGA cable
 - ◆ VC060: DVI-I or DVI-D cable
 - ◆ VC080: HDMI cable

Components

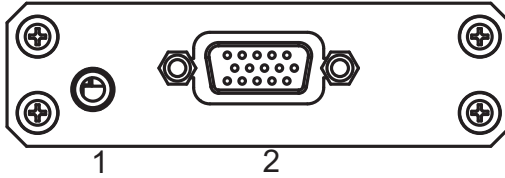
Top View



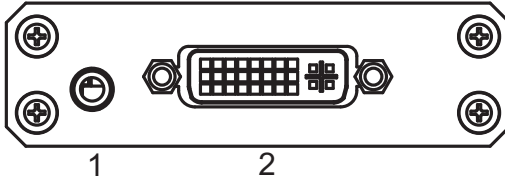
No.	Component	Description
1	EDID Set LEDs	<p>The LEDs indicate the active EDID configuration of the unit.</p> <ul style="list-style-type: none"> ◆ LED 1 - the EDID is set to the ATEN default configuration ◆ LED 2 ~ 4 - the EDID is customized; the EDID settings can be configured using the <i>EDID Learn</i> Pushbutton or via the EDID Wizard and stored for later use (as 2, 3 or 4). <p>See <i>EDID Wizard</i>, page 10 for steps on how to configure the EDID settings via the EDID Wizard.</p>
2	Learn/Select Pushbutton	<p>Press this button to cycle through the EDID settings stored in the unit. See <i>EDID Panel Selection</i>, page 9 for details.</p> <p>You can also use this pushbutton to automatically store the active display's EDID for later use. See <i>EDID Learn Pushbutton</i>, page 9 for steps on how to do this.</p>

Front View

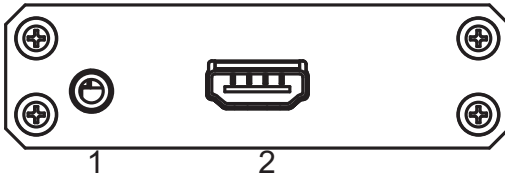
VC010



VC060



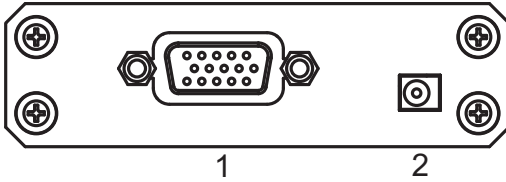
VC080



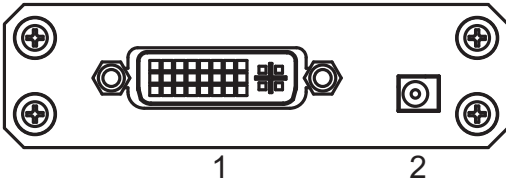
No.	Component	Description
1	RS-232 port	Connect one end of the provided RS-232 Configuration Cable to this port and the other end to your PC's serial port for RS-232 Command Control.
2	VGA IN port / DVI IN port / HDMI IN port	Connect your VGA / DVI / HDMI source device to this port.

Rear View

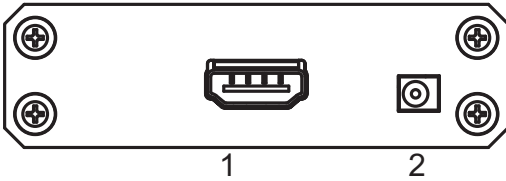
VC010



VC060



VC080



No.	Component	Description
1	VGA OUT port / DVI OUT port / HDMI OUT port	Connect your VGA / DVI / HDMI display to this port.
2	Power Jack	Plug in the power adapter to the power jack and use the switch to power on the VC010 / VC060 / VC080.

Chapter 2

Hardware Setup



1. Important safety information regarding the placement of this device is provided on page 27. Please review it before proceeding.
2. Make sure that the power to all devices connected to the installation are turned off.
3. Make sure that all devices you will be installing are properly grounded.

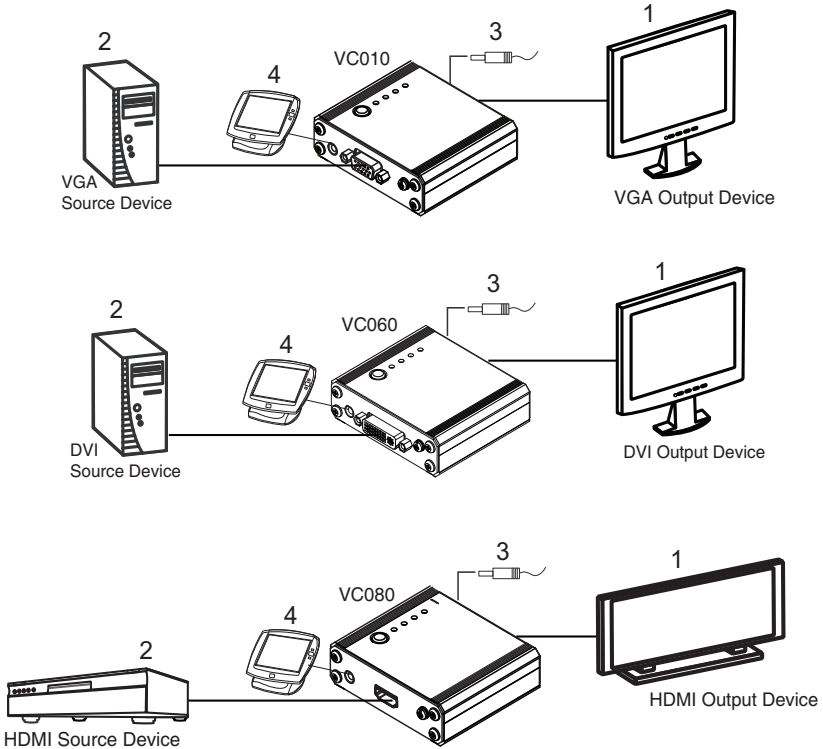
Installation

Installation of the VC010 / VC060 / VC080 is simply a matter of plugging in the appropriate cables.

To install the VC010 / VC060 / VC080, refer to the installation diagram in the next page as you perform the following steps:

1. Do the cable connection for your device as follows:
 - ◆ For **VC010**, use a HDB-15 cable to connect the VGA input port on the video display device to the **VGA Out** port on the rear of the VC010.
 - ◆ For **VC060**, use a DVI cable to connect the DVI input port on the video display device to the **DVI Out** port on the rear of the VC060.
 - ◆ For **VC080**, use an HDMI cable to connect the HDMI input port on the video display device to the **HDMI Out** port on the rear of the VC080.
2. Connect the source device(s) to the front panel port, as follows:
 - ◆ For **VC010**, use an HDB-15 cable to connect the VGA source device(s) to the **VGA In** port on the VC010.
 - ◆ For **VC060**, use a DVI cable to connect the DVI source device(s) to the **DVI In** port on the VC060.
 - ◆ For **VC080**, use HDMI cables to connect the HDMI output ports on the source device(s) to the **HDMI In** port on the VC080.
3. Plug the Plug the USB to DC Power Cord cable into the power jack on the into the Power Jack on the VC010 / VC060 / VC080.

4. (Optional) To edit the VC010 / VC060 / VC080 system settings through the RS-232 port, connect the hardware / software controller here using the provided RS-232 Configuration Cable.



This completes the basic installation of the VGA/DVI/HDMI EDID Emulator. You may now power on the display and source devices.

Installing the RS-232 Controller

You can access and configure the VC010 / VC060 / VC080 EDID Wizard AP through the RS-232 serial interface. Use the RS-232 configuration cable and connect one end to the VC010 / VC060 / VC080 RS-232 port, and the other end to the serial port of your PC.

Note: To configure the VC010 / VC060 / VC080 through the EDID Wizard, see page 10.

Chapter 3

Operation

Overview

The VGA/DVI/HDMI EDID Emulator offers an easy and flexible EDID selection method using the front panel pushbuttons. You can select the default ATEN EDID configuration or one of three customized EDID settings (stored via the EDID Learn Pushbutton or the EDID Wizard). Upgrade the firmware conveniently through the RS-232 serial interface. The VC010 / VC060 / VC080 is set to use the ATEN EDID configuration by default at initialization.

EDID Panel Selection

To select an EDID via the front panel, press the EDID Set pushbutton to toggle between the Default and EDID Sets 1~3. The LEDs indicate which setting is currently selected.

- ◆ **Default**- the EDID is set to the ATEN default configuration
- ◆ **LED 1 ~ 3** - the EDID is customized; see the next section for details on how to customize and store EDIDs for later use.

EDID Learn Pushbutton

You can automatically store a display's EDID for later use by pressing the EDID Learn Pushbutton located in the top panel. Follow these steps:

1. Attach the video display/monitor you want to use to the VC010 / VC060 / VC080.
2. Select the EDID **Set (1~3)** into which you want to store the configuration – do this by pressing the EDID Learn Pushbutton. The LED lights up to indicate it is the active position.
3. Press the EDID Learn Pushbutton for more than **three (3) seconds**. The selected LED flashes to indicate that the settings are being captured and stored.
4. Do these steps (1 to 3) for each display/monitor EDID that you want to store. You can also use the EDID Wizard's *EDID Program* feature.

EDID Wizard

The EDID Wizard application can be downloaded from the ATEN website. It enables users to view detailed information about the attached display and edit them accordingly. Save time by using the EDID Wizard to automatically retrieve a display's EDID. Furthermore, you can use the EDID Wizard to preconfigure up to 3 EDID settings for later use, thus eliminating delays when changing displays.

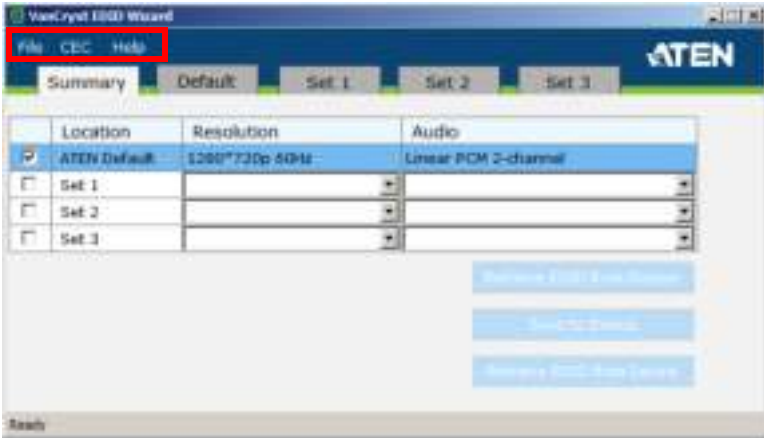
EDID Wizard Menu

The OSD menu options are shown in the table below.

Menu Page	Sub-Menu Page(s)		
EDID Setting	Location	ATEN Default / Set 1 / Set 2 / Set 3	
	Resolution	Resolution	
	Audio	Audio Format (1-3)	
Position	EDID	Vendor / Product Identification	
		EDID Structure/ Revision	
		Basic Display / Feature	
		Color Characteristics	
		Established Timings	
		Standard Timings	
		Detail Timing / Display Description (1-3)	
		Monitor Description (1-2)	
	CEA	Display Support	
		Video Data	
		Audio Data	
		Speaker Allocation	
		Vendor Specific Data	
Detail Timing / Display Description (1-5)			

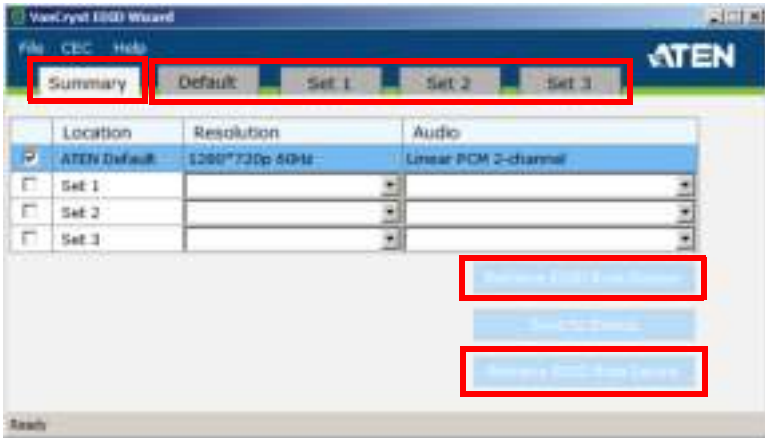
Main Page

After downloading and installing, run the VC010 / VC060 / VC080's EDID Wizard application to display the EDID main page.



The menu options on top of the screen include:

- ◆ **File** - load / save a configuration or quit the application
 - ◆ *Load EDID from file* - if you have previously saved an EDID configuration file, use this option to retrieve and use it for a display
 - ◆ *Save* - use this to save a configuration to a file, which can be loaded later
 - ◆ *Save as* - use this to save a configuration to a new file instead of overwriting the active configuration file
 - ◆ *Quit* - this closes the EDID application
- ◆ **CEC** - connect or disconnect to a monitor/video display
- ◆ **Help** - check the version of the EDID Wizard



- ◆ The *Summary* screen provides a quick view of active EDID configurations stored on the device, including the active **Resolution** and **Audio** settings

Note: To edit the Resolution and Audio options in the Summary screen, you have to manually select the values in the corresponding *Set 1~3* screen. The Summary screen automatically updates when changes are made.

- ◆ The *Default* and *Set 1~3* menu tabs lead to screens showing the configuration for each **EDID Set**. See *Editing EDID Sets*, page 14 for more details
- ◆ **Retrieve EDID from Display** – select a set (*Set 1~3*) and click this button to automatically retrieve the EDID of an attached display/monitor and save it to the set – see *EDID Programming*, page 13 for more details on how to do this
- ◆ **Save to Device** – see page 13
- ◆ **Retrieve EDID from Device** – select a set (*Set 1~3*) and click this button to automatically retrieve the EDID of an attached emulator device and save it to the set

Save to Device

The **Save to Device** button enables you to use an EDID configuration for the duration of the session. Unlike the *File > Save/Save as* menu option, the **Save to Device** button does not save the configuration into a file.

Note: When editing the rest of the screens in the application, make sure you use the *File > Save/Save as* menu option to make an EDID configuration available for later use. Otherwise, you will have to re-enter the EDID configuration values.

EDID Programming

You can use the Summary screen to automatically retrieve and save the EDID settings of a connected monitor/display device. To do this, follow these steps:

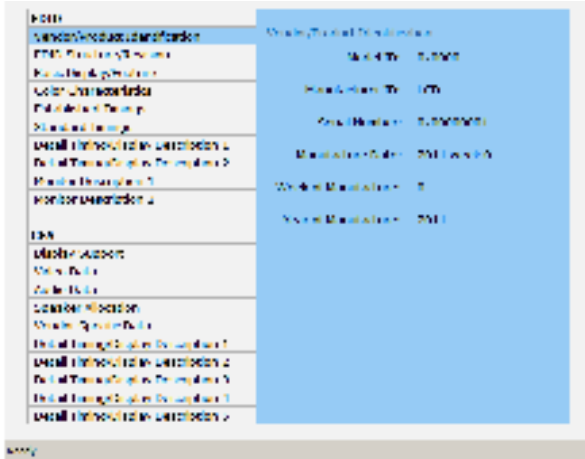
1. In the Summary screen, under the *Location* column, check the **EDID Set (1~3)** into which you want to store the configuration.
2. Click the **Retrieve EDID from Display** button. This captures the EDID settings of the device currently connected to the VC010 / VC060 / VC080.
3. The Summary screen displays the acquired settings. Click the **Save to Device** button to use the configuration for the duration of the session, or go to *File > Save / Save as* menu option to save the configuration to a file, making it available for later use.

Note: See *EDID Learn Pushbutton*, page 9 for retrieving and storing EDID settings using the front panel pushbutton.

Editing EDID Sets

Use the succeeding screens to view, configure and store the EDID configuration for each EDID Set.

Select which EDID Set you want to view/edit by clicking on the menu tab (Set 1, Set 2 or Set 3). The screen has two panels:



Click the option in the left panel that you want to view and/or edit. There are two categories: **EDID** (Extended Display Identification Data) and **CEA** (Consumer Electronics Association).

When you highlight the menu items, the right side panel displays the current settings for the corresponding EDID configuration. Some of the screens are read-only, including the following:

- ◆ EDID
 - Vendor / Product Identification; EDID Structure / Revision; Basic Display / Feature; Color Characteristics; Monitor Description
- ◆ CEA
 - Speaker Allocation

The rest of the screens can be configured and are described in the succeeding sections.

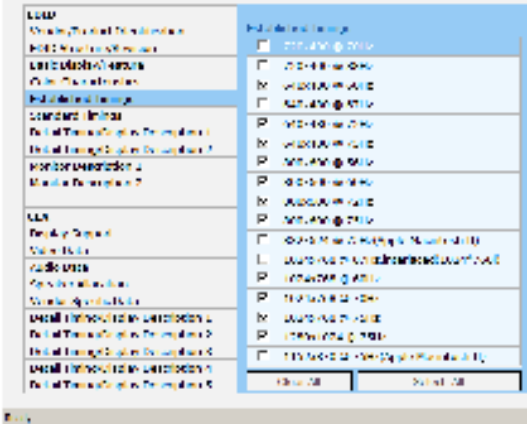
Note: The default ATEN EDID configuration or EDID Default screens are shown in this manual.

EDID

The EDID structure is comprised of 128 bytes in total – each heading shown in the left panel of the EDID Set screen corresponds to a specific number of bytes.

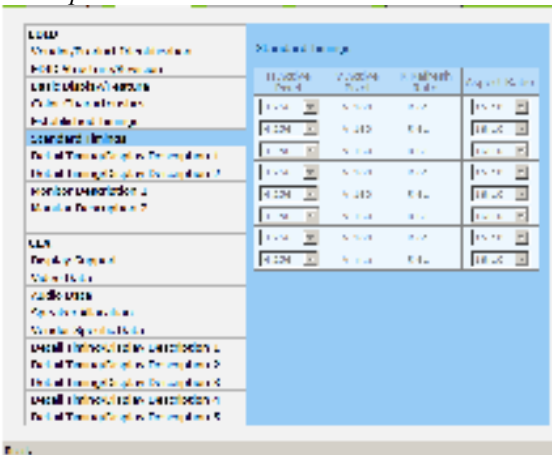
Established Timings

This screen lists video resolutions/timings that display devices can support. Select the resolutions you want to use for the attached monitor/display device.



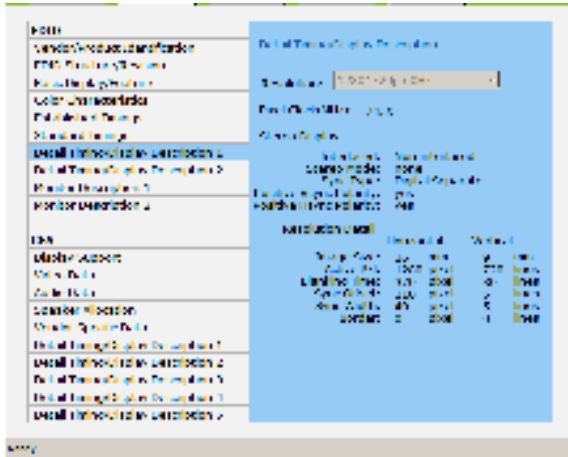
Standard Timings

This screen shows eight resolutions/timings that display devices can support in addition to those listed in the Established Timings. Select the *H Active Pixel* and *Aspect Ratio* for each.



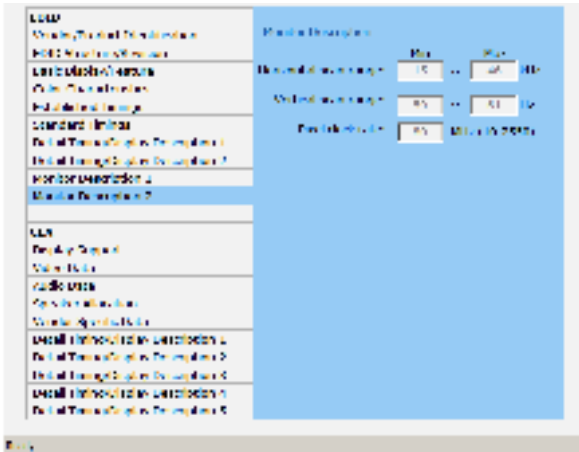
Detail Timing / Display Description

This screen gives more video resolution options, and provides resolution/timing details. In the drop down menu, choose a resolution with values that fit the attached monitor/display device.



Monitor Description 2

This screen lets you specify the viewing specifications, namely horizontal and vertical scan ranges and pixel clock rate, of your monitor/display device. Enter the values that correspond to your device.



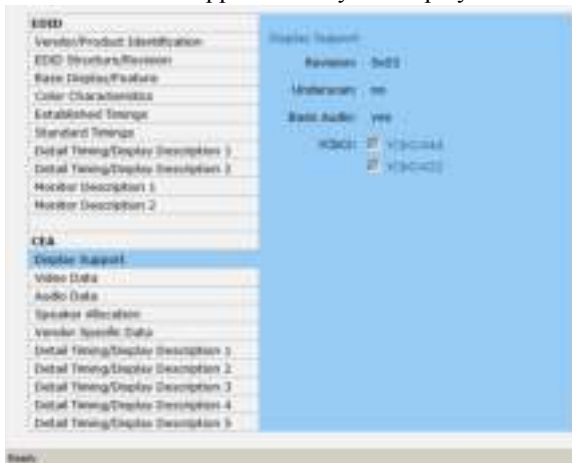
CEA

The following screens fall under the CEA category. CEA is an extension data of the EDID structure, which further extends the standard definitions of EDID to support advanced features of monitors/display devices.

Note: The screens under the CEA category are relevant for HDMI displays only. Only configure these screens if necessary for your display. You may skip the proceeding screens if you are using a VGA or DVI display.

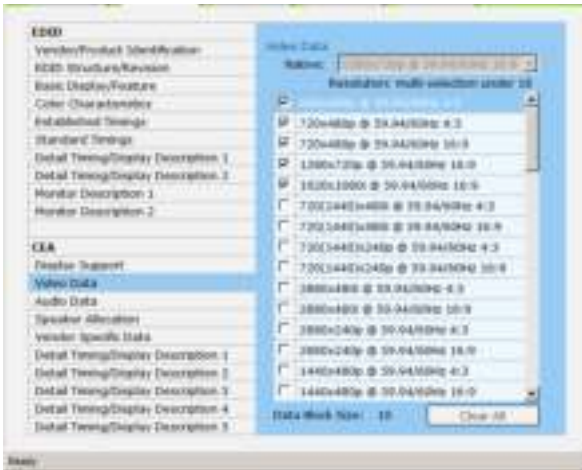
Display Support

This screen describes the display's basic digital components. You can select the YCbCr mode applicable to your display.



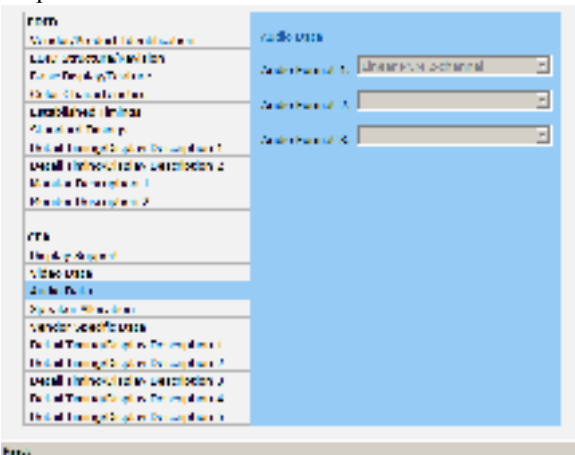
Video Data

This screen lists additional video resolution/timing displays that may be supported by other devices, other than PC monitors (for example 1080i). Select the resolutions that work with the attached monitor/display device.



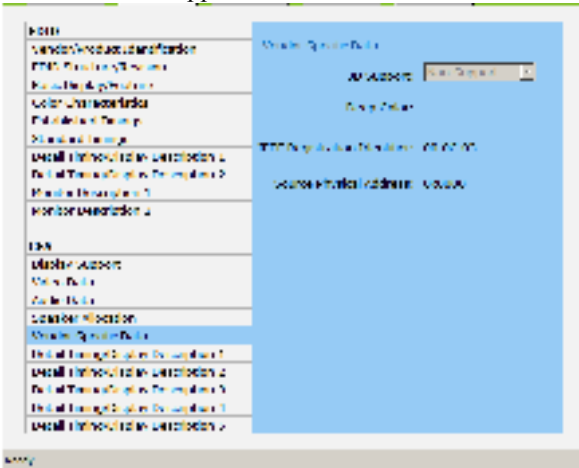
Audio Data

This screen lets you select advanced audio configurations for your device. Use the drop down menu to select the audio format (1~3) applicable to your audio output device.



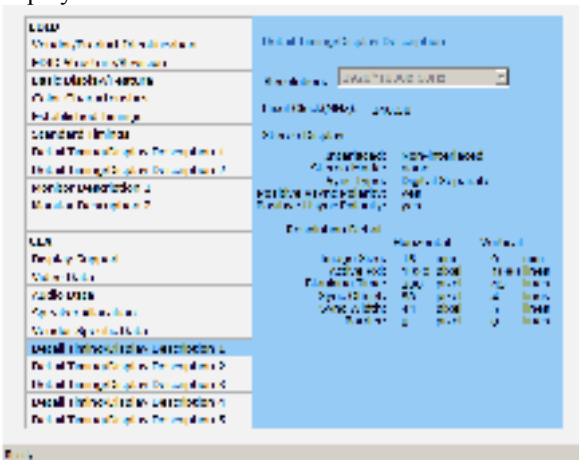
Vendor Specific Data

This screen shows other advanced video parameters supported by your display device. You can select whether to enable/disable 3D support from your device if the feature is supported.



Detail Timing / Display Description

This screen gives more video resolution options, and provides resolution/timing details (in addition to those specified in the EDID structure). In the drop down menu, choose a resolution with values that fit the attached monitor/display device.



Saving your Settings

To save your EDID configuration, click *File* from the top menu and either select:

- ◆ *Save* to overwrite an existing file; or
- ◆ *Save as* to save the settings into a new .BIN file

The .BIN file can be retrieved for later use by clicking *File > Load* and selecting the configuration file.

About

To view the EDID Wizard version, click *Help* and select *About*.



Click *OK* to close this window.

Powering Off and Restarting

If you power off the VC010 / VC060 / VC080, follows these steps before powering it on again:

1. Power off the attached devices.
2. Unplug the power adapter cable from the VC010 / VC060 / VC080.
3. Wait 10 seconds, and then plug the power adapter cable back in.
4. After the VC010 / VC060 / VC080 is powered on, power on the attached devices.

Chapter 4

The Firmware Upgrade Utility

Introduction

The purpose of the Windows-based Firmware Upgrade Utility is to provide an easy process for upgrading the VC010 / VC060 / VC080. The program comes as part of a Firmware Upgrade Package that is specific for each device.

As new firmware versions become available, new firmware upgrade packages are posted on our website. Check the website regularly to find the latest information and packages.

Downloading the Firmware Upgrade Package

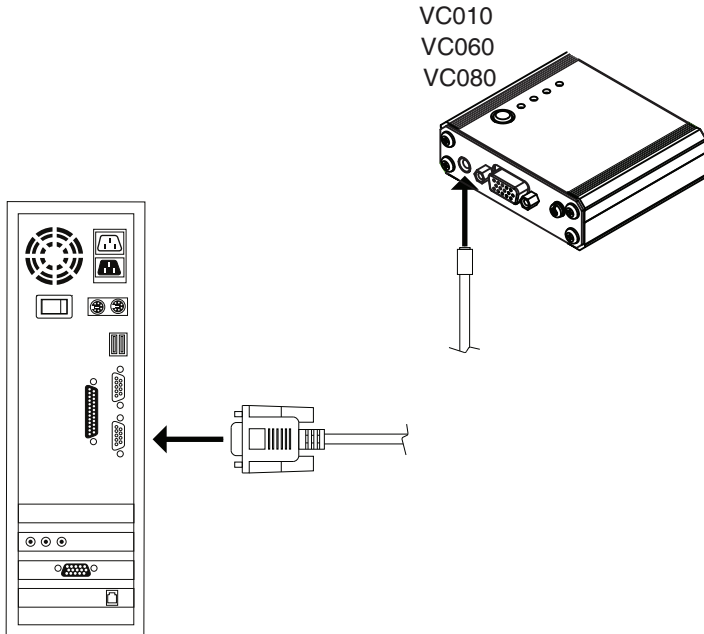
To download the firmware upgrade package:

1. On our Website go to: *Download - Firmware* and choose the device model, or from the VC010 / VC060 / VC080 product page under the *Resources* tab, select *Firmware*. A list of available firmware upgrade packages appears.
2. Choose the firmware upgrade package that you wish to install (usually the most recent) and download it to your computer.

Preparation

To prepare for the firmware upgrade, do the following:

1. Use the *Firmware Upgrade Cable* provided with this unit to connect a COM port on your computer to the *Firmware Upgrade Port* of your VC010 / VC060 / VC080.



2. Press and hold the Learn/Select button.
3. Plug the power adapter into the VC010 / VC060 / VC080 to power the unit.

Starting the Upgrade

To upgrade the firmware:

1. Run the downloaded firmware upgrade package file either by double-clicking the file icon, or by opening a command line and entering the full path to it.

The *Firmware Upgrade Utility* welcome screen appears:



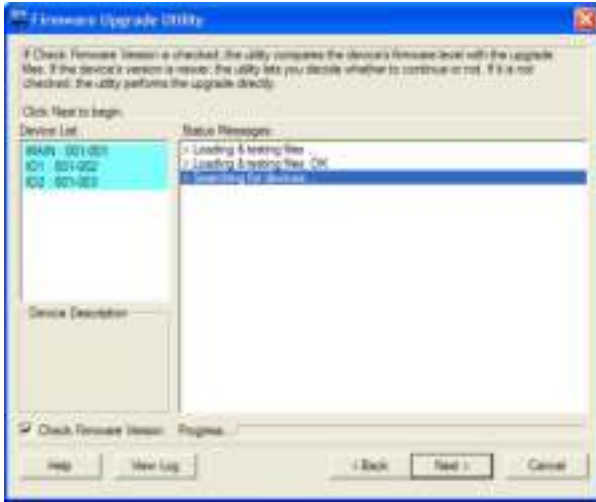
Note: The screens shown in this section are for reference only. The wording and layout of the actual screens put up by the *Firmware Upgrade Utility* may vary slightly from these examples.

2. Read and *Agree* to the License Agreement (click the **I Agree** radio button).

(Continues on next page.)

(Continued from previous page.)

3. Click **Next** to continue. The *Firmware Upgrade Utility* main screen appears. The devices capable of being upgraded are listed in the *Device List* panel:



4. Click **Next** to perform the upgrade.

If you enabled *Check Firmware Version*, the Utility compares the device's firmware level with that of the upgrade files. If it finds that the device's version is higher than the upgrade version, it brings up a dialog box informing you of the situation and gives you the option to continue or cancel.

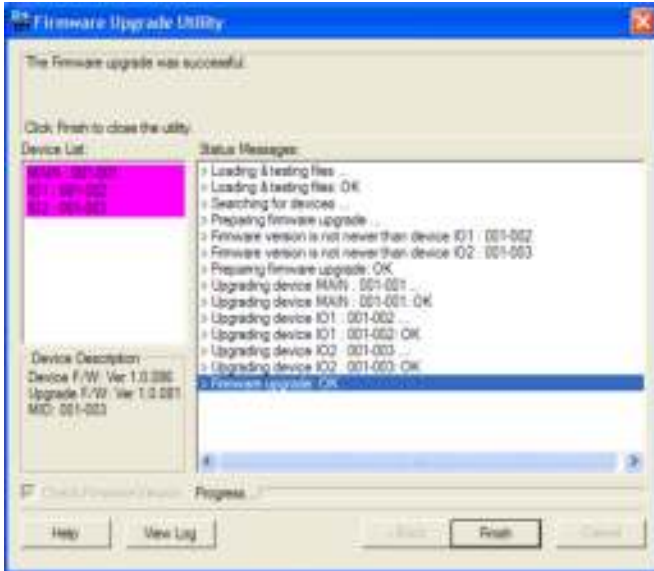


If you didn't enable *Check Firmware Version*, the Utility installs the upgrade files without checking whether they are a higher level, or not.

As the upgrade proceeds, status messages appear in the *Status Messages* panel, and the progress toward completion is shown on the *Progress* bar.

Upgrade Succeeded

After the upgrade has completed, a screen appears to inform you that the procedure was successful:



Click **Finish** to close the *Firmware Upgrade Utility*.

Upgrade Failed

If the *Upgrade Succeeded* screen doesn't appear, it means that the upgrade failed to complete successfully. See the next section, *Firmware Upgrade Recovery*, for how to proceed.

Firmware Upgrade Recovery

There are three conditions that call for firmware upgrade recovery:

- ◆ When a firmware upgrade is manually aborted.
- ◆ When the mainboard firmware upgrade fails.
- ◆ When the I/O firmware upgrade fails.

To perform a firmware upgrade recovery, do the following:

1. Power off the device.
2. Connect the *Firmware Upgrade Cable* to its *Firmware Upgrade Port*.
3. Repeat the upgrade procedure.

Safety Instructions

General

- ◆ This product is for indoor use only.
- ◆ Read all of these instructions. Save them for future reference.
- ◆ Follow all warnings and instructions marked on the device.
- ◆ Do not place the device on any unstable surface (cart, stand, table, etc.). If the device falls, serious damage will result.
- ◆ Do not use the device near water.
- ◆ Do not place the device near, or over, radiators or heat registers.
- ◆ The device cabinet is provided with slots and openings to allow for adequate ventilation. To ensure reliable operation, and to protect against overheating, these openings must never be blocked or covered.
- ◆ The device should never be placed on a soft surface (bed, sofa, rug, etc.) as this will block its ventilation openings. Likewise, the device should not be placed in a built in enclosure unless adequate ventilation has been provided.
- ◆ Never spill liquid of any kind on the device.
- ◆ Unplug the device from the wall outlet before cleaning. Do not use liquid or aerosol cleaners. Use a damp cloth for cleaning.
- ◆ The device should be operated from the type of power source indicated on the marking label. If you are not sure of the type of power available, consult your dealer or local power company.
- ◆ The device is designed for IT power distribution systems with 230V phase-to-phase voltage.
- ◆ To prevent damage to your installation it is important that all devices are properly grounded.
- ◆ The device is equipped with a DC adapter. This is a safety feature.
- ◆ To help protect your system from sudden, transient increases and decreases in electrical power, use a surge suppressor, line conditioner, or un-interruptible power supply (UPS).
- ◆ Position system cables and power cables carefully; Be sure that nothing rests on any cables.

- ◆ Never push objects of any kind into or through cabinet slots. They may touch dangerous voltage points or short out parts resulting in a risk of fire or electrical shock.
- ◆ Do not attempt to service the device yourself. Refer all servicing to qualified service personnel.
- ◆ If the following conditions occur, unplug the device from the wall outlet and bring it to qualified service personnel for repair.
 - ◆ Liquid has been spilled into the device.
 - ◆ The device has been exposed to rain or water.
 - ◆ The device has been dropped, or the cabinet has been damaged.
 - ◆ The device exhibits a distinct change in performance, indicating a need for service.
 - ◆ The device does not operate normally when the operating instructions are followed.
- ◆ Only adjust those controls that are covered in the operating instructions. Improper adjustment of other controls may result in damage that will require extensive work by a qualified technician to repair.

Technical Support

International

- ◆ For online technical support – including troubleshooting, documentation, and software updates: **<http://eservice.aten.com>**
- ◆ For telephone support, see *Telephone Support*, page iii:

North America

Email Support		support@aten-usa.com
Online Technical Support	Troubleshooting Documentation Software Updates	http://www.aten-usa.com/support
Telephone Support		1-888-999-ATEN ext 4988

When you contact us, please have the following information ready beforehand:

- ◆ Product model number, serial number, and date of purchase.
- ◆ Your computer configuration, including operating system, revision level, expansion cards, and software.
- ◆ Any error messages displayed at the time the error occurred.
- ◆ The sequence of operations that led up to the error.
- ◆ Any other information you feel may be of help.

Specifications

Function		VC010	VC060	VC080
Connectors	Video In	1 x HDB-15 F (Blue)	1 x DVI-I F (White)	1 x HDMI Type A F (Black)
	Video Out	1 x HDB-15 F (Blue)	1 x DVI-I F (White)	1 x HDMI Type A F (Blue)
	RS-232 Port	1 x Mini Jack (Black)		
	Power	1 x DC Jack		
Switch	Learn/Select	1 x Pushbutton		
LED	EDID Set	4 (Green)		
Video		1920 x 1200; 1080p		
Power Consumption		DC5V, 0.15W		
Environment	Operating Temperature	0°C - 50°C		
	Storage Temperature	-20°C - 60°C		
	Humidity	0 – 80% RH, Non-condensing		
Physical Properties	Housing	Metal		
	Weight	0.15 kg		
	Dimension (L x W x H)	7.90 x 7.76 x 2.45 cm	7.90 x 7.86 x 2.45 cm	7.90 x 7.16 x 2.45 cm

Limited Warranty

IN NO EVENT SHALL THE DIRECT VENDOR'S LIABILITY EXCEED THE PRICE PAID FOR THE PRODUCT FROM DIRECT, INDIRECT, SPECIAL, INCIDENTAL, OR CONSEQUENTIAL DAMAGES RESULTING FROM THE USE OF THE PRODUCT, DISK, OR ITS DOCUMENTATION.

The direct vendor makes no warranty or representation, expressed, implied, or statutory with respect to the contents or use of this documentation, and especially disclaims its quality, performance, merchantability, or fitness for any particular purpose.

The direct vendor also reserves the right to revise or update the device or documentation without obligation to notify any individual or entity of such revisions, or update. For further inquiries, please contact your direct vendor.