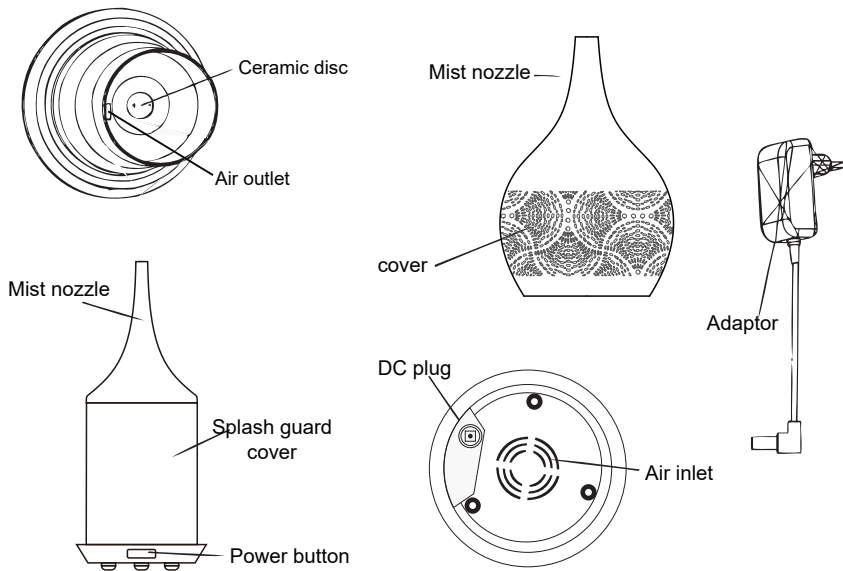


# Instruction Manual

## INCLUDED

- Main Unit
- AC Adaptor: Input 220~240V.a.c Output 24V.d.c

## NAMES OF PARTS



## FUNCTION CHARACTERISTICS

### ■ Mist button usage

- Press once: The diffuser will switch on. Ambient lighting will activate and the mist will start to rise from the nozzle immediately.
- Press twice: This activates the intermittent mist setting mode. The diffuser will now mist for 30 seconds, stop for 30 seconds and repeat.
- Press thrice: Pressing the power button thrice will switch off the diffuser. The light and mist will switch off.

### ■ Water shortage protection

When Aroma Diffuser water levels become too low, the Aroma Diffuser will automatically turn off. When Aroma Diffuser works continuously 4 hours, it will automatically turn off as well. This will protect the atomiser from being burnt or broken.

### ■ Overheating protection

If the machine over heats abnormally it will automatically turn off.

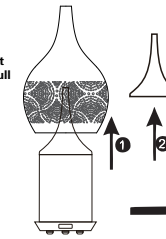
### ■ Water capacity:120ml

## INSTALLATION MANUAL

Please open the top cover.

Place the diffuser on a firm and flat place, in upright direction. Then pull the cover upward carefully.

Detach the splash guard cover from the water tank.



Add around 120ml tap water inside the water tank

Connect the adaptor to the DC plug before filling water into the water tank.

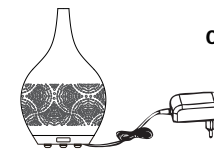
Step 1 Add water to the water tank with a suitable measuring cup until the water level is at the red marker.

Step 2 Add 1-2 drops of your favourite fragrance or essential oil into the water.

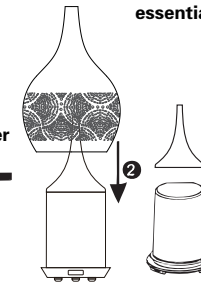


Please do not exceed the max water line when filling water in side, one or two drops of essential oil is enough for 120ml water.

Insert the adaptor plug into household power socket.



Close the top cover



Attach the splash guard cover to the main body correctly.

Do not operate without water. Turn off the diffuser when the water tank is empty.

Never fill the water tank directly from the water tap, it could cause damage to the diffuser.

In case of water exceeding the red marker guideline, pour out the excessive water, avoiding the air outlet.

TO CONNECT THE POWER SOURCE  
Connect the adaptor to the DC plug and then connect the adaptor to the power source.  
Never plug into the mains first.

For essential oil / fragrance, we suggest to use water-soluble one.

## TROUBLESHOOTING

Symptom:	Possible Cause:	Solution:
Unit will not switch on	There is an insufficient amount of water in the water tank	Fill the water tank with water up to the max. Fill line. Be careful not to over fill the unit with water.
	The power cable may not be connected properly	Disconnect cable and reconnect carefully
No mist being produced or mist volume seems abnormal	There is an insufficient amount of water in the water tank	Fill the tank with water up to the max. Fill line. Be careful not to overfill the unit with water.
	Water is exceeding the max. water level line	Pour our excess water. The water must not exceed the red marker.
	The lid is not positioned correctly on the unit	Remove cover and replace correctly so mist can release properly
	There is a build-up of dirt and oil on the ceramic disc	Please refer to maintenance instructions on how to clean the ceramic disc
Water is leaking from the product	The air suction part underneath the unit is blocked or dirty	Clean the suction part of any dirt as restricted air flow will affect the mist
	The lid is not positioned correctly on the unit	Remove cover and replace correctly so mist can release properly
	The unit has been knocked or tipped over	Follow accidental leakage instructions
	The temperature is low or there is high humidity	Under these conditions the mist may condense quickly into water droplets

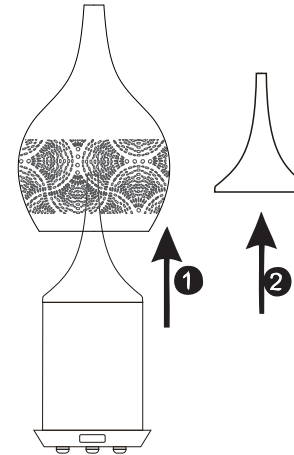
## IMPORTANT NOTES BEFORE USE:

- Place the Aroma Diffuser on a flat surface, at least 60cm away from the floor and at least 10cm away from the wall. DO NOT place the Aroma Diffuser on wooden or polished furniture that may be damaged by water moisture.
- Always unplug the Aroma Diffuser from the mains electrical supply when cleaning or filling with water. Always use the power adaptor supplied. Ensure the cable is secure to avoid tripping or knocking over the Aroma Diffuser. If the power adaptor is damaged, it must be replaced with a suitable adaptor provided by the manufacturer or its agent. Alternatively, a new adaptor can be purchased from your retailer.
- Use a suitable measuring cup to fill the water into the water tank. Never attempt to fill water under a running tap or whilst plugged in. Do not fill the water beyond the max water level line. Carefully remove the excess water from the tank, away from the air outlet.
- The Aroma Diffuser must be kept out of reach from children and pets to avoid risk of injury. Children should be supervised at all times to ensure they do not play with the appliance.
- Keep the Aroma Diffuser in a clear space to allow the mist to freely spread and away from appliances especially those sensitive to water (e.g. TV and other electrical items) to avoid unnecessary accidents.
- Always plug the adaptor into the DC socket before plugging into the mains.
- NEVER touch the disc while the diffuser is plugged in as this could cause serious injury.
- Do not immerse the unit in water or other liquids.
- In case of any abnormal observations such as smoke, peculiar smells or noise, stop using the Aroma Diffuser immediately to avoid risk of an accident such as fire or electric shock. Unplug the adaptor immediately. Never wrap the adaptor with cloth or paper, as blocking the ventilation could increase the fire risk.
- Never attempt to disassemble or repair the product as this may void your warranty and create a shock hazard. Contact your retailer if an internal inspection or repair is necessary.
- When handling the Diffuser, please do so with care to avoid breakage. Accidental damage is not covered under the warranty. The glass cover is particularly fragile and should be handled with care at all times. Glass breakage is not covered under the warranty.
- The Aroma Diffuser is not intended for use by persons (including children) with reduced physical, sensory or mental capabilities or lack of experience and knowledge, unless they have been given supervision or instruction concerning use of the appliance by a person responsible for their safety.
- Always use water at room temperature and only use fresh, clean water from a reliable source. Do not fill the water tank with other chemicals or liquids other than water and a few drops of essential or fragrance oils.
- The Aroma Diffuser must be cleaned regularly and should always be kept clean and dry when not in use. Never leave stagnant oil and water in the tank for prolonged periods.
- Do not remove the covers during operation.

## MAINTENANCE

**CAUTION: ALWAYS SWITCH OFF THE APPLIANCE AND DISCONNECT THE POWER SOURCE FROM ELECTRICAL OUTLET BEFORE CLEANING.**

**Always keep your Aroma Diffuser clean and dry when not in use. Never leave stagnant oil and water inside the tank for prolonged periods.**



**Remove the glass cover and empty the water tank carefully, avoiding the air outlet. Wipe it with a soft, damp cloth to remove any remaining oil from the water tank.**

**Use a cotton bud to wipe the ceramic disc inside. For stubborn oil build up, use sanitary alcohol on the cotton bud if required. Do not use strong cleaning agents.**

**If the Aroma Diffuser does not generate mist (or generates little mist), clean the ceramic disc inside.**

**Essential oil should not come in contact with the exterior surface of the unit.**

## ACCIDENTAL LEAKAGE

**In the event of being knocked over during use, please follow the steps below to avoid malfunction.**

- **Unplug the diffuser from the mains and remove the glass cover carefully**
- **Pour out any remaining water from the water tank**
- **Shake the diffuser gently to drain any water from inside, then**
- **allow 24 hours for the diffuser to dry thoroughly**

## WARRANTY

**This product carries a 12 month warranty for proper use in accordance with this manual against manufacturing defects. Accidental damage is not covered under the warranty. This warranty period is 12 months from the date of purchase. In case of any problems arising during the warranty period, please contact your retailer for maintenance or claims. Proof of purchase will be required, it is vital that you keep your receipt of purchase with this manual safely.**

**Corrosive oils such as Citronella may cause damage to the disc if left in the water tank. This type of damage is not covered under the warranty.**