

Princess
Glass Kettle London
Type 01.206941.01.001
220-240V - 50/60Hz 1850-2200 W
1.7 L
Unique design



PRINCESS

PRINCESS

PRINCESS

PRINCESS

PRINCESS

225x167x248mm

1.7
LITER

2200
WATT



Glass Kettle London

NL Glazen waterkoker London | FR Bouilloire Londres | DE Glas-Wasserkocher London | ES Hervidor de Agua Londres
PT Jarro Fervedor London | IT Bollitore vetro London | SV Vattenkokare av glas - London | RU Стеклянный чайник London | PL Szkłany czajnik London

- 1.7L** VOLUME OF 1.7 L
- 360°** UNIQUE GLASS DESIGN
- 360°** 360° ROTATION, FOR LEFT AND RIGHT HANDED USERS
- 1850-2200 W** CONCEALED HEATING ELEMENT FOR EASY CLEANING
- 100°C** AUTOMATICALLY SHUTS OFF WHEN TEMPERATURE IS REACHED
- OFF** OVERHEAT AND BOIL-DRY PROTECTION
- 1/2** CONVENIENT WATER LEVEL INDICATOR PER CUP
- 2200 W** HIGH POWER OF 2200 W



Glass Kettle London

- EN Glass kettle London**
 - Volume: 1.7 l
 - Main material: Glass
 - 360° rotation
 - Concealed heating element
 - Type of controller: Stick
 - Blue light
 - On/Off switch
 - Water level indicator
 - Detachable filter spout
 - Automatic shut-off
 - Boil-dry protection
 - Cord storage
 - Power: 2200 W
- DE Glas-Wasserkocher London**
 - Inhalt: 1,7 l
 - Hauptmaterial: Glas
 - 360° drehbar
 - Verstecktes Heizelement
 - Art des Controllers: Stick
 - Blaue Beleuchtung
 - Ein-/Aussschalter
 - Wasserspiegelanzeige
 - Abnehmbare Filterauslauf
 - Automatisches Abschalten
 - Trockenkochschutz
 - Kabelaufwicklung
 - Leistung: 2200 W
- PT Jarro Fervedor London**
 - Capacidade: 1,7 l
 - Materiais principais: Vidro
 - Rotação 360°
 - Resistência oculta
 - Tipo de controlador: Stick
 - Luz azul
 - Interruptor on/off
 - Indicador de nível
 - Filtro removível
 - Desliga automaticamente
 - Proteção de ebulição
 - Armazenagem do cabo
 - Potência: 2200 W
- PL Szkłany czajnik London**
 - pojemność: 1,7 l
 - Główny materiał: Szkło
 - Obrót o 360°
 - Kryjta grzałka
 - Typ kontrolera: Stick
 - Niebieskie światło
 - Przycisk on/off
 - Wyświetlacz dla poziomu wody
 - Wyjmowalny filtr wlewoy
 - Automatyczne wyłączenie
 - Zabezpieczenie przed przelaniem bez wody
 - Schowek na kabel
 - Moc: 2200 W

- NL Glazen waterkoker London**
 - Inhoud: 1,7 l
 - Materiaal: Glas
 - 360° draaibaar
 - Verborgen verwarmingselement
 - Type controller: Stick
 - Blaue Licht
 - Aan/uit schakelaar
 - Waterniveau indicator
 - Uitneembare schenklift
 - Automatische uitschakeling
 - Droogkookbeveiliging
 - Kabelaopbergstelsel
 - Vermogen: 2200 W
- ES Hervidor de Agua Londres**
 - Capacidad: 1,7 l
 - Materiales principales: Cristal
 - Rotación 360°
 - Resistencia oculta
 - Tipos de control: Stick
 - Luz azul
 - Botón on/off
 - Indicador de nivel de agua
 - Filtro de boquilla desmontable
 - Apagado automático
 - Protección contra ebullición en seco
 - Compartimento para guardar el cable
 - Potencia: 2200 W
- FR Bouilloire Londres**
 - Capacité: 1,7 l
 - Matériau principal: Verre
 - Rotation 360°
 - Résistance cachée
 - Type de contrôleur: Stick
 - Lumière bleue
 - Bouton marche/arrêt
 - Indicateur de niveau d'eau
 - Filtre amovible
 - Arrêt automatique
 - Arrêt automatique en cas de fonctionnement à sec
 - Rangement du cordon
 - Puissance: 2200 W
- IT Bollitore vetro London**
 - Capacità: 1,7 l
 - Materiale principale: Vetro
 - Rotazione a 360°
 - Resistenza nascosta
 - Tipi di Controller: Stick
 - Luce blu
 - Interruttore On/Off
 - Indicatore livello acqua
 - Filtro nel beccuccio rimovibile
 - Spegnimento automatico
 - Protezione a secco
 - Alloggiamento per il cavo
 - Potenza: 2200 W



Get the most out of your product! Visit WWW.PRINCESSHOME.EU/REGISTER for registration, spare parts and accessories.



Cordless and 360° rotatable
The kettle is very easy to handle; no cord getting in the way when pouring. Turn it easily around in your preferred position.



Unique design with LED lighting

The minimalistic design of this kettle is unique, there's no one alike! The glass and LED light give it a modern look, but are also very functional; you'll see at a glance if the water is boiling.



Detachable filter

You can easily remove the filter and clean it by rinsing it under running water.



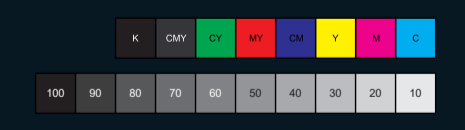
Safe use

Because of the convenient boil-dry protection, the kettle automatically shuts off when it's empty and there's no more water inside. This guarantees safe usage.



High power of 2200 W

Thanks to the cup indicator you can easily boil the preferred amount of water without spilling a drip in an energy efficient way. The 2200 watts ensures a quick boiling process.



Princess Julia Vennweg 87 | 5015 BH Tilburg | The Netherlands | www.princesshome.eu
Glass Kettle London | Model No.: 01.206941.01.001 | 220-240V - 50/60Hz - 1850-2200 W