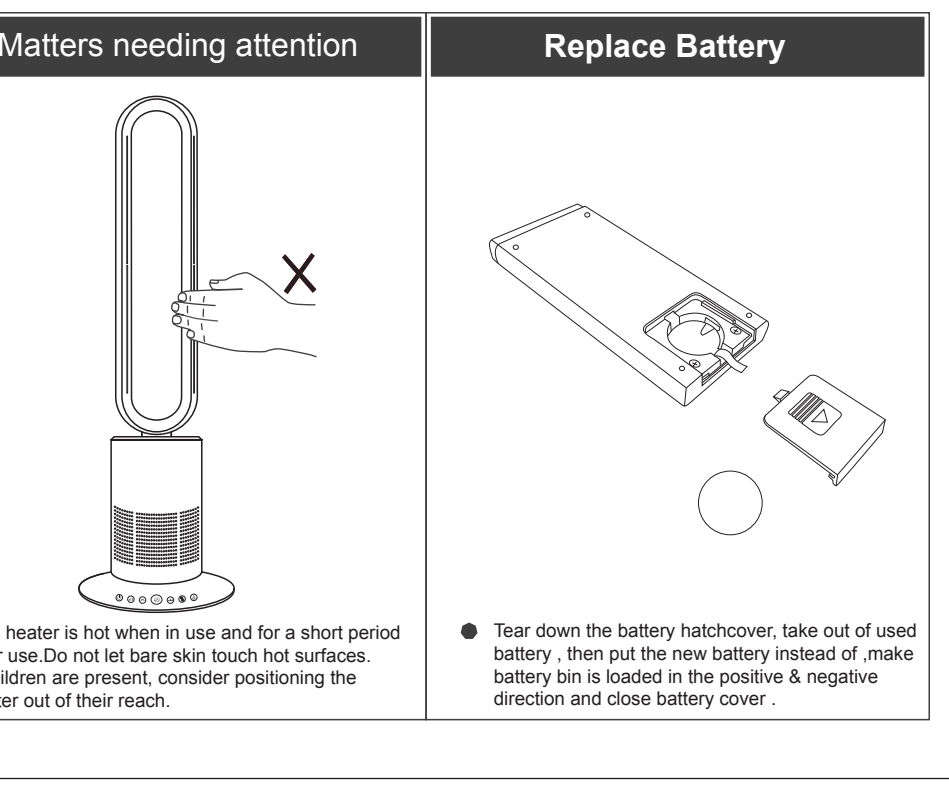
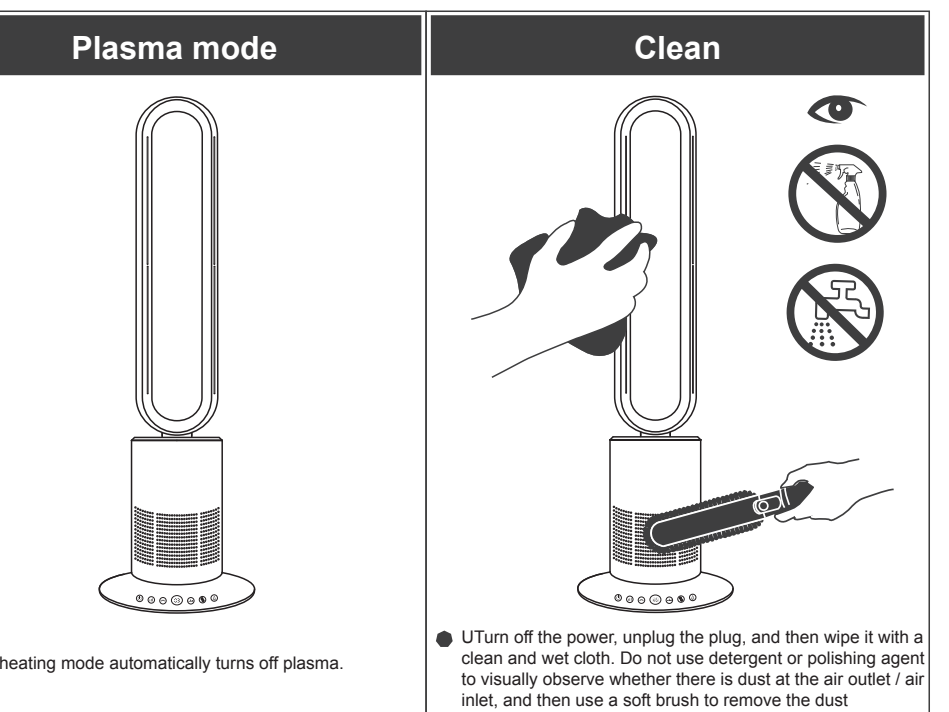
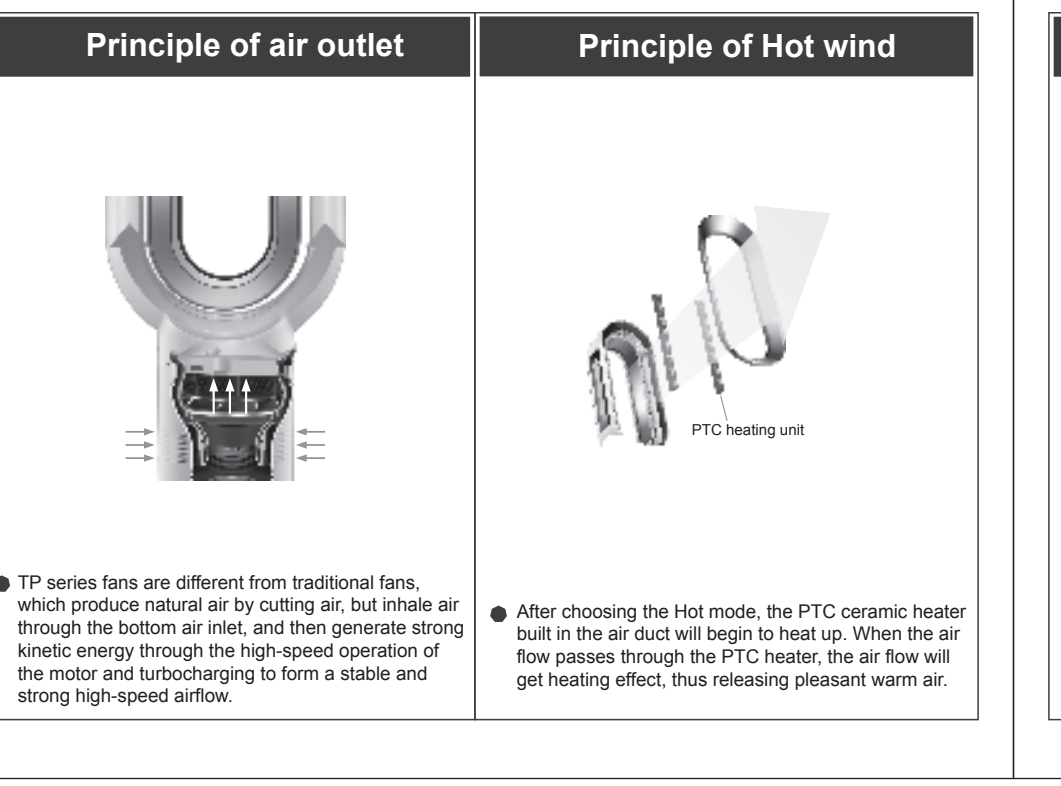
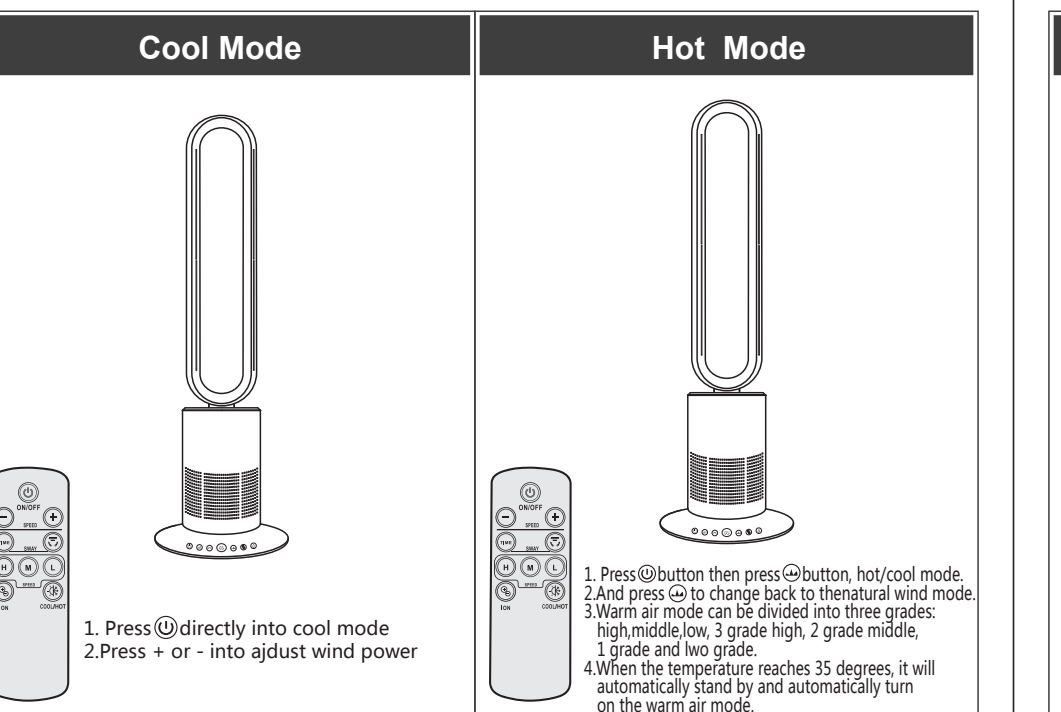
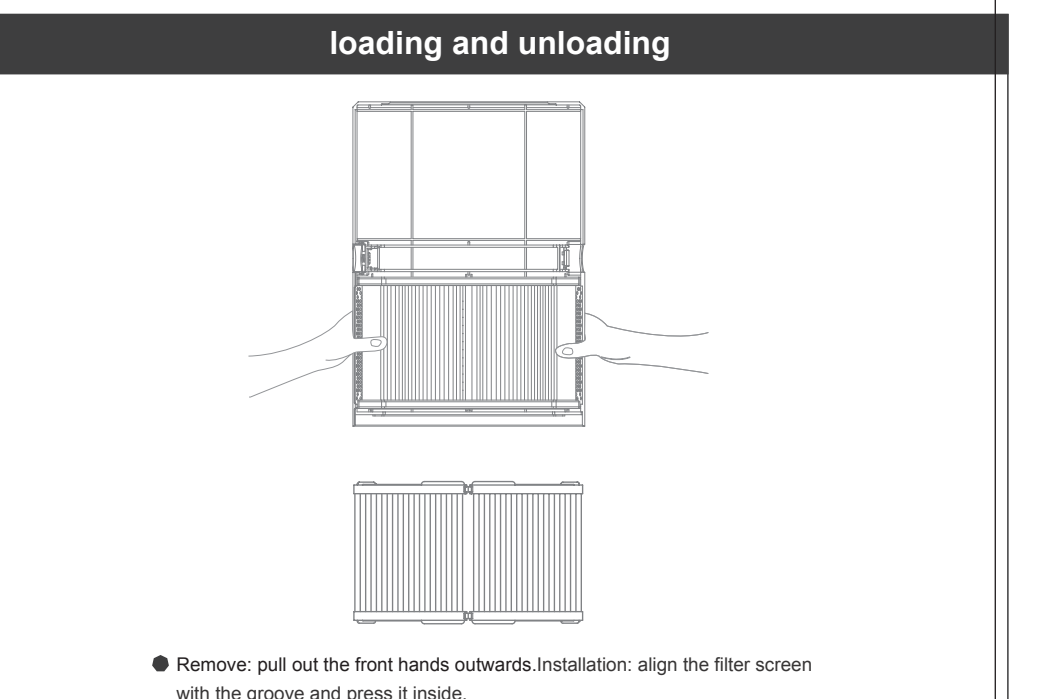
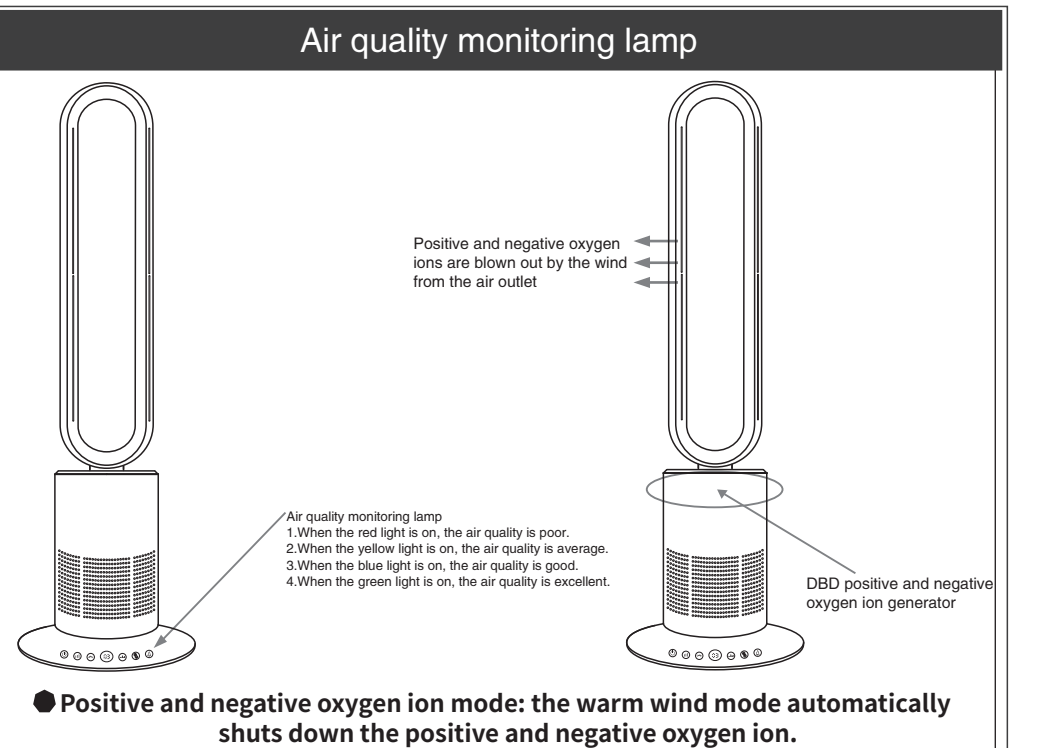
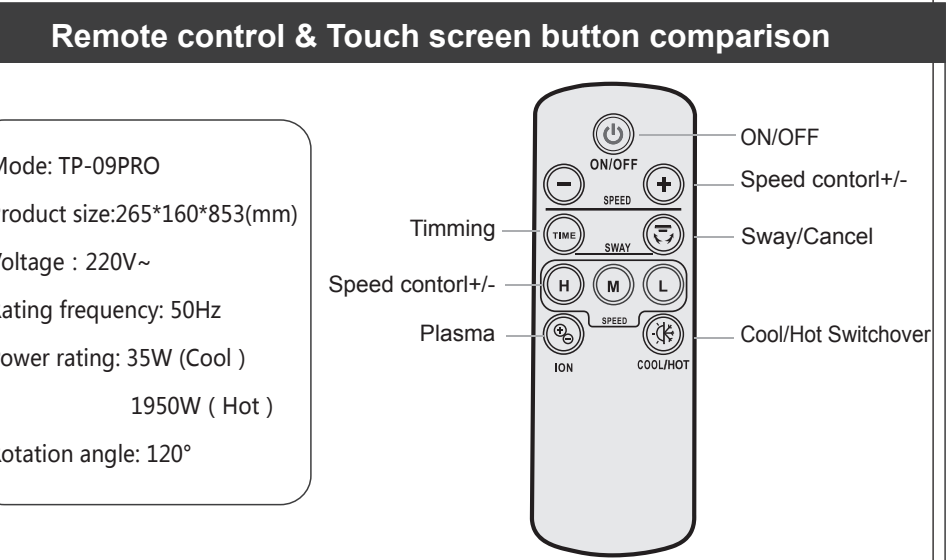
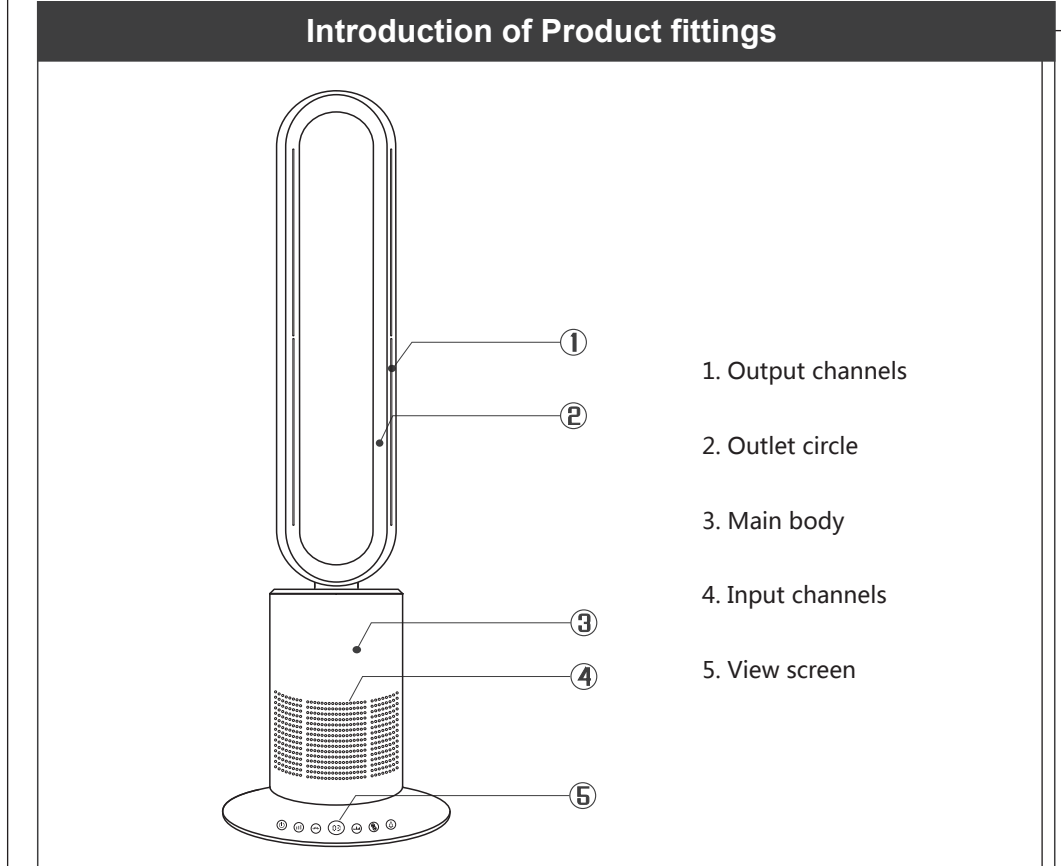
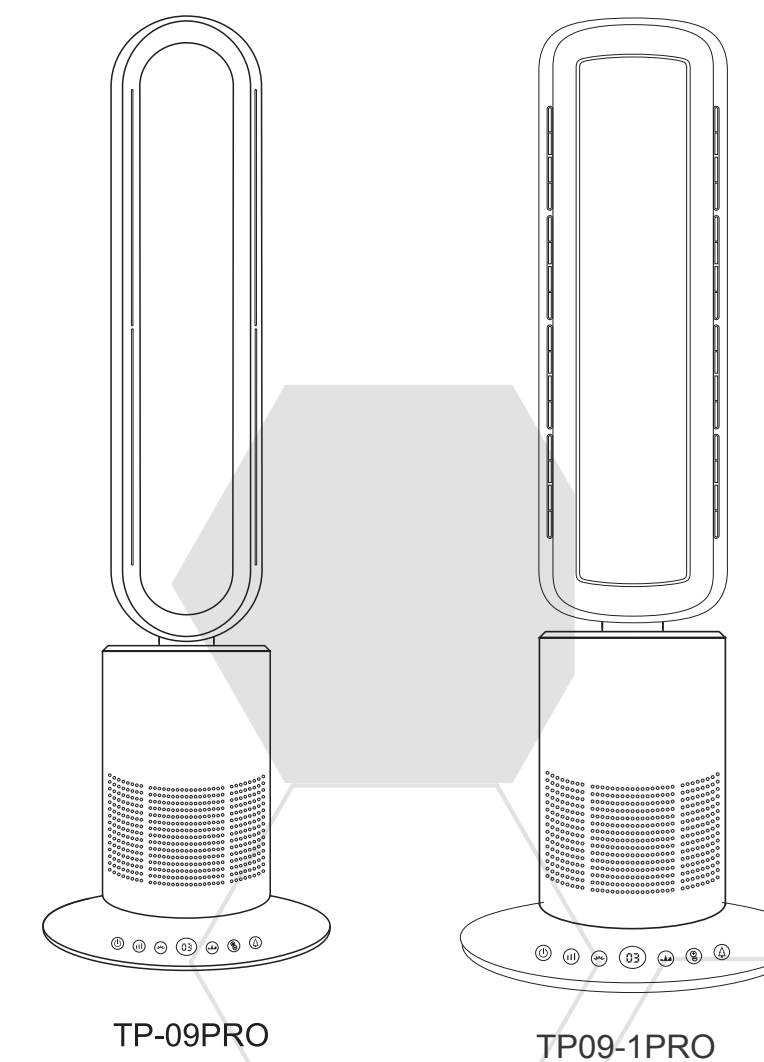


Cool & Heat with Hepa & Plasma

Operating Instruction

Thank you very much for using our products, please kindly read through the manual before usage.



IMPORTANT SAFETY INSTRUCTIONS
BEFORE USING THIS APPLIANCE READ ALL INSTRUCTIONS AND CAUTIONARY MARKINGS IN THIS MANUAL AND ON THE APPLIANCE.
When using an electrical appliance, basic precautions should always be followed including the following:

WARNING

TO REDUCE THE RISK OF FIRE, ELECTRIC SHOCK OR INJURY:

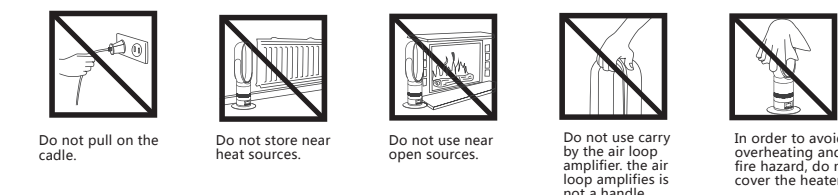
- This heater is hot when in use and for a short period after use. To avoid burns, do not let bare skin touch hot surfaces. When moving the heater hold it by the base, not the air loop amplifier.
- Keep combustible materials, such as furniture, pillows, bedding, papers, clothes and curtains, at least 0.9m (3 feet) from the front of the heater and keep them away from the sides and rear when the heater is plugged in.
- Extreme caution is necessary when any heater is used by or near children or infirm persons and whenever the heater is left operating and unattended.
- Do not allow to be used as a toy. Close attention is necessary when used by or near young children. Children should be supervised to ensure that they do not play with the heater or remote control.
- This heater and remote control are not intended for use by young children or infirm persons with reduced physical, sensory or reasoning capabilities, or lack of experience and knowledge, unless they have been given supervision or instruction by a responsible person concerning use of the heater to ensure that they can use it safely.
- The base must be fitted securely before operating. Do not disassemble or use without the base fitted.
- Suitable for dry locations ONLY. Do not use outdoors or on wet surfaces. Do not use in bathrooms, laundry areas and similar indoor locations. Never locate the heater where it may fall into a bath or other water container. Do not use or store where it may get wet or in the immediate surroundings of a bath, a shower or a swimming pool.
- A heater has hot parts inside. Do not use it in areas where petrol, paint, or flammable liquids are used or stored or where their vapours are present. Do not use in conjunction with an directly next to an air freshener or similar products.
- Do not locate directly below a mains electricity supply socket.
- Always plug directly into a wall socket. Never use with an extension cable as overloading may result in the cable overheating and catching fire.
- Do not handle any parts of the plug or heater with wet hands.
- Do not unplug by pulling on the cable. To unplug, grasp the plug, not the cable.
- Do not stretch the cable or place the cable under strain. Do not run the cable under carpeting. Do not cover the cable with throw rugs, runners, or similar coverings. Do not route the cable under furniture or appliances. To avoid a tripping hazard arrange the cable away from traffic areas so that it will not be tripped over.
- Do not use with a damaged cable or plug. If the supply cable is damaged it must be replaced by this company or its service agent or similarly qualified persons in order to avoid a hazard.
- To disconnect the heater, turn the controls off, then remove the plug from the socket. Always unplug the heater when not in use.
- Do not use if the heater malfunctions or has been dropped or damaged in any manner. Contact the company Helpline or return to an authorised service facility for examination and/or repair.
- To prevent a possible fire, do not use with any opening or exhaust blocked, and keep free of dust, lint, hair, and anything that may reduce airflow. Do not put any objects into the inlet grill or the exhaust opening as this may cause an electric shock or fire, or damage the heater.
- Do not use on soft surfaces, such as a bed, where openings may become blocked.
- Use only as described in this Dyson Operating Manual. Any other use not recommended by the manufacturer may cause fire, electric shock, or injury to persons.
- In order to avoid overheating and fire hazard, do not cover the heater.
- Choking hazard: the remote control unit contains a small battery. Keep the remote control away from children and do not swallow the battery. If the battery is swallowed seek medical advice at once.
- The heater should be positioned so the airflow is directed away from any walls or room corners.

IMPORTANT SAFETY FEATURES

For your safety this heater is fitted with automatic cut-out switches that operate if the heater tips over or overheats. If the switches operate, unplug the heater and allow it to cool. Before restarting the heater check and clear any blockages and ensure the heater is on a solid level surface.

READ AND SAVE THESE INSTRUCTIONS

THIS APPLIANCE IS INTENDED FOR HOUSEHOLD USE ONLY



Liang Shifu's Cool and Warm Fan is exempt from insurance for two years
Terms and Conditions of One Year Warranty for Your Cooler's Cooling and Heating Fans

- The warranty clause shall come into force as of the date of purchase.
- All warranty work will be performed by Liang Shifu or his authorized agent.
- Any replacement parts will be owned by Liang Shifu.
- Under the warranty terms, repair and replacement services cannot extend the warranty period.
- Please keep your purchase notes.
- Before repairing your fans, you must provide purchase notes. Without this bill, any work we do will be charged.

Scope covered

- Within one year of purchase, defects due to poor materials, processes or functions will result in the repair and maintenance required (if there is no one component, or production has stopped, Liangshifu will replace it with a practical component).

Warranty card

Customer	Full name:	Warranty Period
	Address:	
Customer	Telephone:	Two Years
	Purchase Date:	
Customer	1. The product will be free of charge within two years from the date of purchase.	Examination clerk
	2. If it is necessary to replace spare parts beyond the time limit specified in the preceding paragraph, the maintenance fee shall be charged as appropriate.	
Customer	3. During the warranty period, free repairs are not allowed in the following circumstances	Problem Description
	a. Failure to query purchase records or provide purchase information	
Customer	b. Maintenance beyond warranty period.	Problem Description
	c. Damage caused by disassembly or renovation.	
Customer	d. Damage caused by misuse/negligence or improper use.	Problem Description
	e. Faults or damages caused by non-ordinary household use (e.g. long-term use in places with poor environment).	
Customer	f. Those whose appearance is naturally stained by use.	Problem Description