

QUICK START GUIDE GUIDE DE DÉMARRAGE RAPIDE



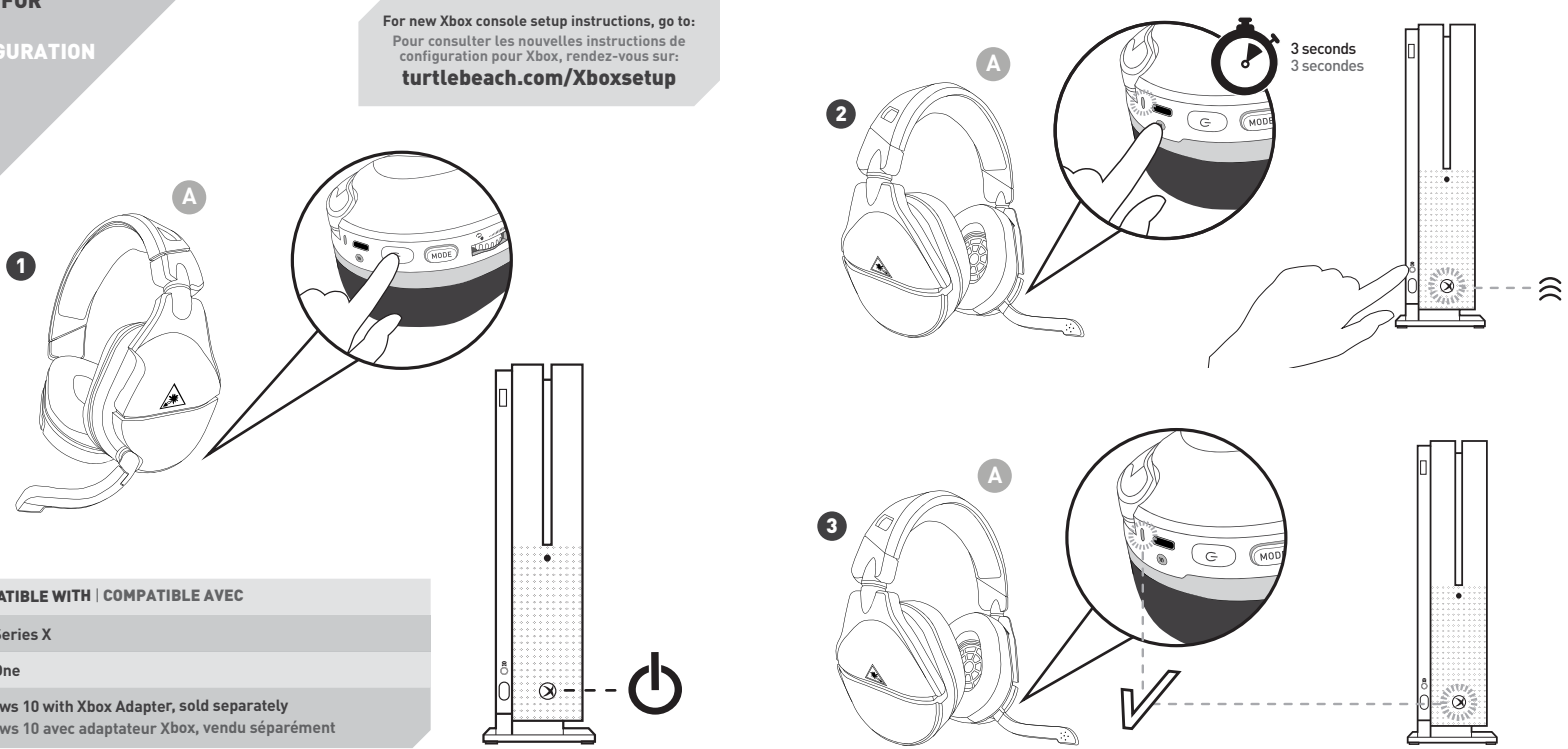
**STEALTH™
600
GEN 2**

**IMPORTANT
READ BEFORE USING
À LIRE AVANT UTILISATION**

Any questions? Des questions ?
turtlebeach.com/support
Model: Stealth™ 600 Gen 2 for Xbox

SETUP FOR XBOX CONFIGURATION XBOX

For new Xbox console setup instructions, go to:
Pour consulter les nouvelles instructions de
configuration pour Xbox, rendez-vous sur:
turtlebeach.com/Xboxsetup



COMPATIBLE WITH / COMPATIBLE AVEC

Xbox Series X
Xbox One
Windows 10 with Xbox Adapter, sold separately
Windows 10 avec adaptateur Xbox, vendu séparément

**IMPORTANT
PLEASE MAKE SURE YOUR HEADSET
IS UPDATED WITH THE LATEST FIRMWARE.**

**IMPORTANT
VEUILLEZ VOUS ASSURER QUE VOTRE CASQUE
DISPOSE DE LA DERNIÈRE VERSION DU MICROLOGICIEL.**

Connect to the **Turtle Beach Audio Hub** for
Windows or **Mac**® to update firmware.

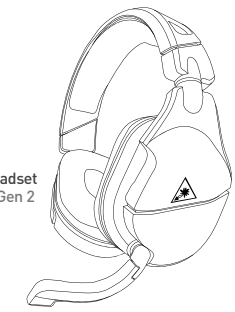
Connectez-vous au **Turtle Beach Audio Hub** pour
Windows ou **Mac**® afin de mettre à jour le micrologiciel.

turtlebeach.com/audiohub



CONTENTS CONTENU DE LA BOÎTE

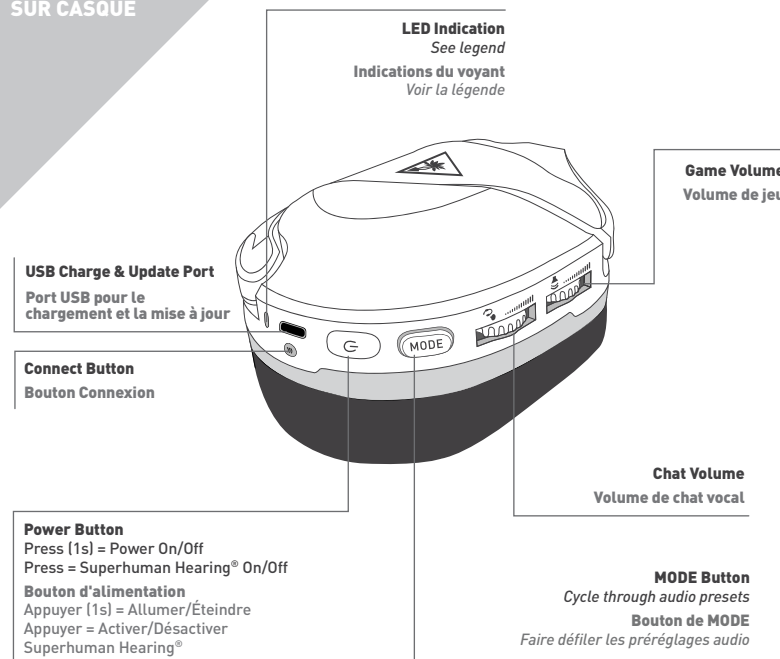
A Stealth™ 600 Gen 2 Headset
Casque Stealth™ 600 Gen 2



B USB-C Charging Cable
Câble de chargement USB-C



HEADSET CONTROLS COMMANDES SUR CASQUE

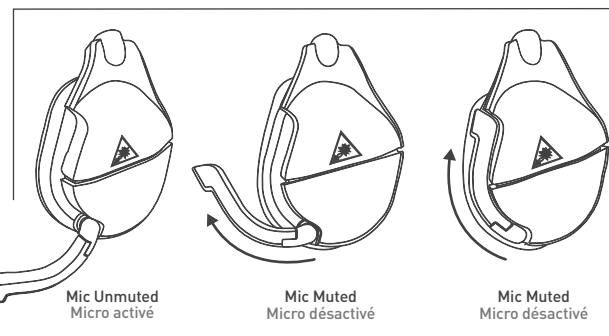


Use Superhuman Hearing™ Mode to pinpoint quiet audio cues like enemy footsteps and weapon reloads. During gameplay, you can activate and deactivate Superhuman Hearing™ by pressing the **POWER button once, quickly**.

Le mode Superhuman Hearing™ permet d'entendre le moindre son, comme les pas d'un adversaire ou le rechargement d'une arme. Pendant le jeu, vous pouvez activer ou désactiver Superhuman Hearing™ en appuyant une fois sur le bouton d'alimentation rapidement.



Microphone Mute
Flip up mic to mute. There is an audible tone when the mic is muted or unmuted.



Mode muet
Relevés le microphone pour le désactiver. Vous entendrez un son lorsque le microphone est désactivé ou activé.

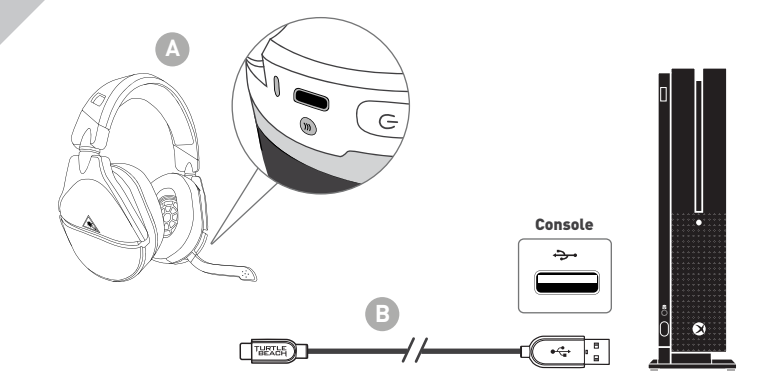
EQ PRESETS | PRÉSETS D'ÉGALISATION

Signature Sound Son emblématique
Bass Boost Amplification des basses
Bass + Treble Boost Amplification des basses et des aigus
Vocal Boost Amplification vocal

CHARGING CHARGEMENT

The Stealth™ 600 Gen 2 gives you **15 hours** of rechargeable battery life. Make sure to charge it regularly before storing.

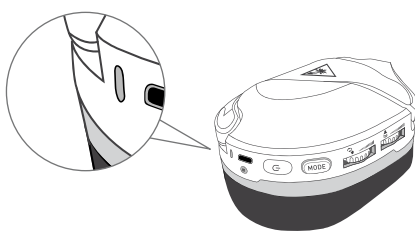
Le Stealth™ 600 Gen 2 vous offre **15 heures** d'autonomie de batterie rechargeable. N'oubliez pas de le recharger régulièrement avant de le ranger.



Headset Storage
Always charge your headset before storing it for any extended period of time (greater than 3 months). Never store the unit in temperatures above 113°F/45°C.

Rangement du casque:
Chargez toujours votre casque avant de le ranger pour une longue durée (plus de 3 mois). Ne stockez jamais le casque à des températures supérieures à 45°C.

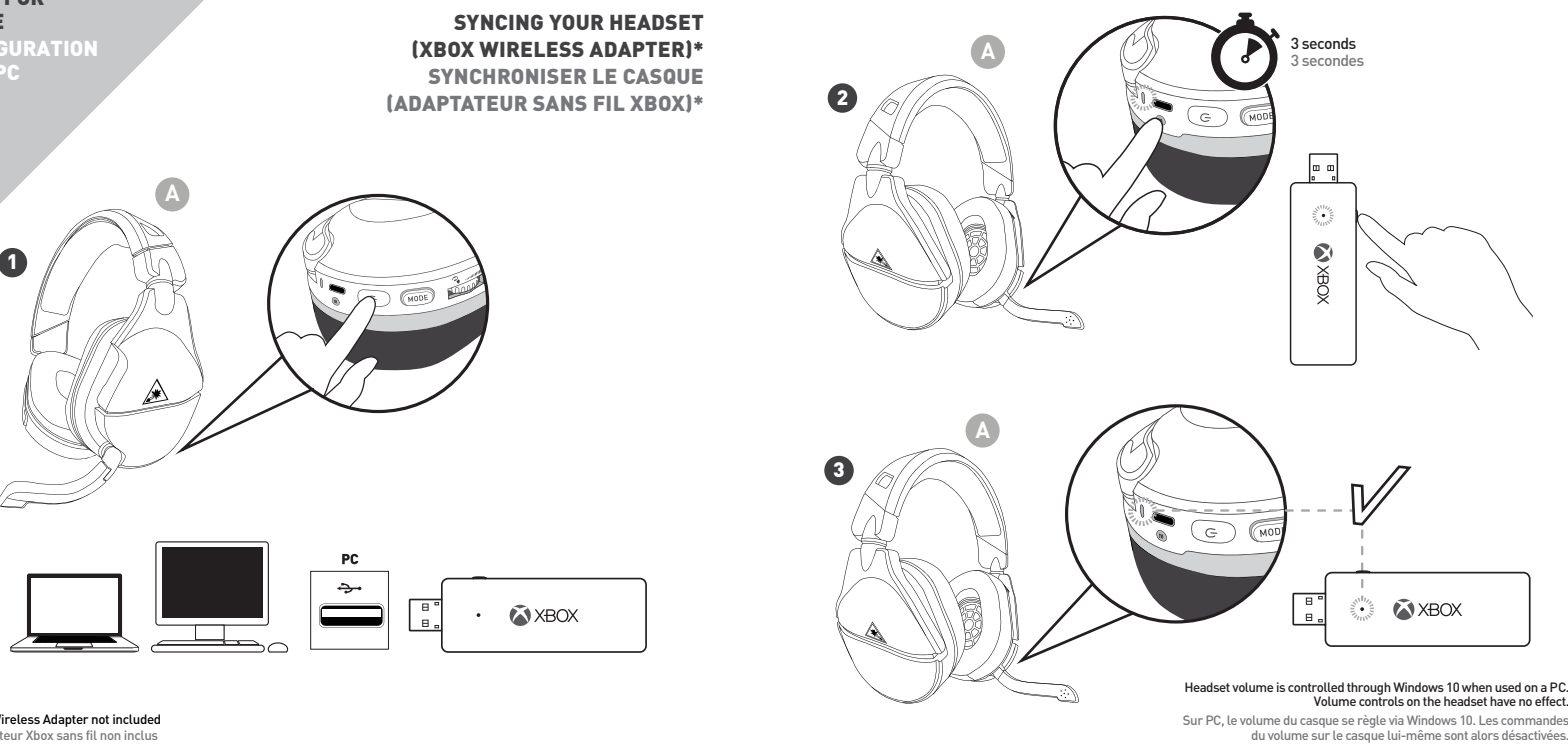
HEADSET LED VOYANT DU CASQUE



HEADSET LED	MEANING
Solid Green	Headset and Console Paired
Breathing Green	[While Charging] Battery Full
Double-Blink Green	Not Paired
Solid Red	[While Charging] Battery Charging
Breathing Red	Battery Low
FR VOYANT DU CASQUE	SIGNIFICATION
Vert et Fixe	Casque et Console Appariés
Cilignote en Vert	[En Charge] Batterie Pleine
Cilignote Deux Fois en Vert	Non Apparié
Rouge et Fixe	[En Charge] Batterie en Charge
Cilignote en Rouge	Batterie Faible

SETUP FOR PC USE CONFIGURATION POUR PC

**SYNCING YOUR HEADSET
(XBOX WIRELESS ADAPTER)*
SYNCHRONISER LE CASQUE
(ADAPTATEUR SANS FIL XBOX)***



*Xbox Wireless Adapter not included
*Adaptateur Xbox sans fil non inclus

**SYNCING YOUR HEADSET
(BUILT-IN XBOX WIRELESS)
SYNCHRONISER LE CASQUE
(TECHNOLOGIE XBOX SANS FIL INTÉGRÉE)**

EN 1. On your PC, go to **Settings > Devices > Connected Devices**.
2. Press the connect button on your headset. Windows finds and adds the headset.
3. When your Stealth™ 600 headset appears in the list under Other devices, it is ready to use.
4. Configuring your settings > On the Windows Taskbar, right-click the Speaker icon, Select Playback Devices
a. Select TURTLE BEACH Stealth 600 as your default device.
b. Select Recording Devices, Set TURTLE BEACH Stealth 600 as your default device.

DE 1. Wählen Sie auf Ihrem PC **Einstellungen > Geräte > Angeschlossene Geräte**.
a. Wählen Sie „Gerät hinzufügen“. Windows sucht jetzt nach dem Headset.
2. Drücken Sie den Knopf „Connect“ (Anschließen) auf Ihrem Headset. Windows findet das Headset und fügt es hinzu.
3. Sobald Ihr Stealth™ 600 Headset in der Liste unter „Andere Geräte“ angezeigt wird, kann es benutzt werden.
4. Einstellungen konfigurieren > Rechtsklicken Sie das Lautsprechersymbol in der Windows Taskleiste und wählen Sie „Wiedergabegeräte“
a. Wählen Sie TURTLE BEACH Stealth 600 als Ihr Standardgerät.
b. Wählen Sie „Aufnahmegeräte“ und legen Sie TURTLE BEACH Stealth 600 als Ihr Standardgerät fest.

DK 1. Gå til **Indstillinger > Enheder > Tilsluttede enheder** på din pc.
a. Vælg Tilføj en enhed. Windows vil søge efter headsettet.
2. Tryk på forbindelsesknappen på dit headset. Windows vil finde og tilføje headsettet.
3. Når dit Stealth™ 600-headset bliver vist på listen under Andre enheder, er det klar til brug.
4. Juster dine indstillinger > Højreklik på højttaler-ikonet på Windows' proceslinje, og vælg Afspilningsenheder
a. Vælg TURTLE BEACH Stealth 600 som standardenhed.
b. Vælg Optagelseenheder, og vælg herunder TURTLE BEACH Stealth 600 som standardenhed.

Headset volume is controlled through Windows 10 when used on a PC.
Sur PC, le volume du casque se règle via Windows 10. Les commandes du volume sur le casque lui-même sont alors désactivées.

Regulatory Compliance Statements for the Stealth™ 600X Gen 2

Local Restrictions on 802.11a, 802.11b, 802.11g and 802.11n Radio Usage
Caution: Due to the fact that the frequencies used by 802.11a, 802.11b, 802.11g and 802.11n wireless LAN devices may not yet be harmonized in all countries, 802.11a, 802.11b, 802.11g and 802.11n products are designed for use only in specific countries, and are not allowed to be operated in countries other than those of designated use. As a user of these products, you are responsible for ensuring that the products are used only in the countries for which they were intended and for verifying that they are configured with the correct selection of frequency and channel for the country of use. Any deviation from the permissible power and frequency settings for the country of use is an infringement of national law and may be punished as such.

To determine whether you are allowed to use your wireless network device in a specific country, please check to see if the radio type number that is printed on the identification label of your device is listed in the manufacturer's OEM Regulatory Distance document at the following URL: <http://www.turtlebeach.com/homologation> or contact Turtle Beach directly.

Federal Communications Commission (FCC) Compliance Notices
This section includes the following FCC statements for the Stealth™ 600X Gen 2:
• FCC ID: 20B-TB22115 • Class II Interference Statement
• RF Radiation Exposure & Hazard Warning • Non-Modification Statement
• Unintended National Infrastructure Bands Operation Statement

Class II Interference Statement
This equipment has been tested and found to comply with the limits for a Class B digital device, pursuant to Part 15 of the FCC Rules. These limits are designed to provide reasonable protection against harmful interference in a residential installation. This equipment generates, uses, and can radiate radio frequency energy and, if not installed and used in accordance with the instructions, may cause harmful interference to radio communications. However, there is no guarantee that interference will not occur in a particular installation. If this equipment does cause harmful interference to radio or television reception, which can be determined by turning the equipment off and on, the user is encouraged to try to correct the interference by one or more of the following measures:
• Reorient or relocate the receiving antenna.
• Increase the separation between the equipment and receiver.
• Connect the equipment into an outlet on a circuit different from that to which the receiver is connected.
• Consult the dealer or an experienced radio/TV technician for help.

FCC Caution:
This device complies with Part 15 of the FCC Rules. Operation is subject to the following two conditions: (1) This device may not cause harmful interference, and (2) this device must accept any interference received, including interference that may cause undesired operation.

RF Radiation Exposure & Hazard Statement
To ensure compliance with FCC RF exposure requirements, this device must be installed in a location such that the antenna of the device will be greater than 2 cm (0.8 in.) from all persons. Using higher gain antennas and types of antennas not covered under the FCC certification of this product is not allowed. Installers of the radio and end users of the product must adhere to the installation instructions provided in this manual. This transmitter must not be co-located or operated in conjunction with any other antenna or transmitter.

Non-Modification Statement
Use only the supplied internal antenna. Unauthorized antenna, modifications, or attachments could damage the Stealth™ 600X Gen 2 and violate FCC regulations. Any changes or modifications not expressly approved by the party responsible for compliance could void the user's authority to operate this equipment. Please contact Turtle Beach for a list of approved 2.4 GHz and 5.0 GHz antennas.

Unintended National Information Infrastructure (U-NII) Bands Operation Statement
Within the 5.25-5.35 GHz band, U-NII devices will be restricted to indoor operations to reduce any potential for harmful interference to co-channel MSS operations. The U-NII devices shall accept any interference from legal communications and shall not interfere with the legal communications. If interference is caused, the user must stop operating the device immediately and cannot resume operation until the harmful interference is cleared.
Manufacturers of U-NII devices are responsible for ensuring frequency stability such that an emission is maintained within the band of operation under all conditions of normal operation as specified in this user manual.

Dynamic Frequency Selection (DFS)
U-NII devices operating in the 5.25-5.35 GHz and 5.47-5.725 GHz bands shall employ a DFS radar detection mechanism to detect the presence of radar systems and to avoid co-channel operation with radar systems in order to reduce the likelihood of interference to radar. The modification of wireless broadband and other transmitter devices to operate on unauthorized frequencies or the disabling of DFS capabilities is a violation of FCC rules and may result in unlawful interference to radio communications services critical to public safety and to our nation's government operations.
This product is compliant with the Consumer Product Safety Improvement Act of 2008, Public Law 110-314 (CPSIA).

Canadian ICES Statements IC: 3079A-2015 (Stealth™ 600X Gen 2)
This device complies with ICES 001 and RSS 247 of Industry Canada. Operation is subject to the following two conditions:
1. This device may not cause interference, and,
2. This device must accept any interference, including interference that may cause undesired operation of the device.

Ce dispositif est conforme aux normes HMB003 et CEM-307 d'Industrie Canada.
1. L'utilisation de ce dispositif est autorisée seulement aux conditions suivantes:
2. Il ne doit pas produire de brouillage et l'utilisateur du dispositif doit être prêt à accepter tout brouillage radioélectrique reçu, même si ce brouillage est susceptible de compromettre le fonctionnement du dispositif.
To prevent radio interference to the licensed service i.e. co-channel Mobile Satellite systems) this device is intended to be operated indoors and away from windows to provide maximum shielding. Equipment (or its transmit antenna) that is installed outdoors is subject to licensing and not supported by Stealth™ 600X Gen 2 Models.
Pour éviter les interférences radio au service agréé (i.e.-à, Les systèmes par satellite mobile co-canal), cet appareil est destiné à fonctionner à l'intérieur et à l'éloigner des fenêtres pour assurer un blindage maximal. L'équipement (ou son antenne d'émission) installé à l'extérieur est soumis à l'octroi de licences et n'est pas pris en charge par les modèles Stealth™ 600X Gen 2.

RF Radiation Exposure & Hazard Statement
To ensure compliance with RSS-102 RF exposure requirements, this device must be installed in a location such that the antenna of the device will be greater than 2 cm (0.8 in.) away from all persons. Using higher gain antennas and types of antennas not covered under the IC certification of this product is not allowed. Installers of the radio and end users of the product must adhere to the installation instructions provided in this manual. This transmitter must not be co-located or operated in conjunction with any other antenna or transmitter.

Exposition aux rayonnements RF & Mesures de danger
Pour assurer la conformité avec les exigences RSS-102 d'exposition aux RF (Radio Fréquences), cet appareil doit être installé dans un endroit où l'antenne de l'appareil sera située à une distance de plus de 2 cm (0.8 po) de toutes personnes. L'utilisation d'antennes à gain plus élevé et les types d'antennes qui ne sont pas couverts par la certification IC de ce produit n'est pas autorisée. Les installateurs de la radio et les utilisateurs du produit final doivent se conformer aux instructions d'installation fournies dans ce manuel. Cet émetteur ne doit pas être co-implanté ou exploité en conjonction avec toute autre antenne ou transmetteur.

Equipment Statement
This product is certified for indoor deployment only in the 5150-5250 MHz band. Do not install or use this product outdoors in that frequency band in Canada.

Déclaration de déploiement
Ce produit est certifié pour le déploiement à l'intérieur tout en rencontrant les limites de cette bande de fréquences 5150-5250 MHz. Ne pas installer ou utiliser ce produit à l'extérieur au Canada, si cette bande de fréquences ne peut être rencontrée.

Operation in the Frequency Bands 5470-5725 MHz and 5725-5850 MHz
Until further notice, devices subject to this section shall not be capable of transmitting in the band from 5600-5650 MHz. This restriction is for the protection of Environment Canada's weather radars operating in this band. Users are advised that high-power radars are allocated as primary users (i.e. priority access) of the bands 5250-5350 MHz and 5650-5850 MHz and that these radars could cause interference and/or damage to LE-LAN devices.

Fonctionnement dans les bandes de fréquence 5470-5725 MHz et 5725-5850 MHz
Jusqu'à nouvel avis, les appareils soumis à cette section ne doivent pas émettre de transmission dans la bande de 5600-5650 MHz. Cette restriction concerne la protection des radars météorologiques d'Environnement Canada opérant dans cette bande. Les utilisateurs s'entendent que les utilisateurs de radars de haute puissance sont désignés utilisateurs prioritaires (i.e.-à, qu'ils ont la priorité) pour les bandes 5250-5350 MHz et 5650-5850 MHz et que ces radars pourraient causer des interférences et/ou des dommages aux dispositifs LAN-LE.

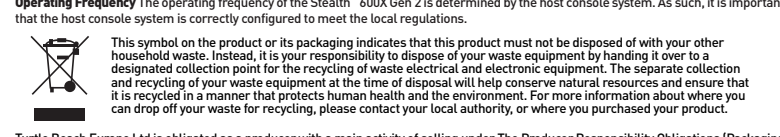
European Union and European Free Trade Association Regulatory Compliance
This equipment may be operated in the countries that comprise the member countries of the European Union and the European Free Trade Association. These countries, listed below, are referred to as The European Community throughout this document:
AUSTRIA, BELGIUM, BULGARIA, CYPRUS, CZECH REPUBLIC, DENMARK, ESTONIA, FINLAND, FRANCE, GERMANY, GREECE, HUNGARY, IRELAND, ITALY, LITHUANIA, LUXEMBOURG, MALTA, NETHERLANDS, POLAND, PORTUGAL, ROMANIA, SLOVAKIA, SLOVENIA, SPAIN, SWEDEN, UNITED KINGDOM, ICELAND, LICHTENSTEIN, NORWAY, SWITZERLAND

Declaration of Conformity
Marking by this symbol indicates compliance with the Essential Requirements of the Radio Equipment Directive (RED) of the European Union (2014/53/EU). This equipment meets the following conformance standards:

Safety: IEC 60950-1:2006 + A11:2009 + A1:2010 + A12:2011 + A2:2013 (IT-Mark License), IEC 60950-1:2005 (DIN EN 60950-1:2005), IEC 62368-1:2014 + A11 (IT-Mark License), IEC 62368-1:2014 (CB Scheme Certificate), EN 50322-1:2012, EN 50322-2:2012, EN 6171-3:2013
Additional licenses issued for specific countries available on request
EMC: EN 55022:2012, CISPR 32:2015, EN 61899-1:2011, EN 12017-502:EN 12017-502, EN 301 489-1 V3.1.1 (2016-11), EN 10000-4-2:2009, EN 10000-4-3:2006 + A1:2008 + A2:2010, EN 61000-4-8:2010
The products are licensed, as required, for additional country specific standards for the International Marketplace. Additional issued licenses available upon request.
SAR: EN 302 328 V2.1 (2019-07), EN 301 893 V2.1.1 (2017-05)
RoHS: EN 62311:2008
Environmental: RoHS 2015/863 amending Annex II to 2011/65/EU, WEEE 2012/19/EU, REACH 2006/1907/EC, Packaging 94/62/EC, Battery 2006/66/EC, Toy Safety Directive 2009/48/EC

Warning! This is a Class B product. In a domestic environment, this product may cause radio interference, in which case, the user may be required to take appropriate measures.
Achtung! Dieses ist ein Gerät der Funkstörleistungsklasse B. In Wohnbereichen können bei Betrieb dieses Gerätes Rundfunkstörungen auftreten, in welchen Fällen der Benutzer für entsprechende Gegenmaßnahmen verantwortlich ist.
Atención: Este es un producto de Clase B. En un ambiente doméstico, este producto puede causar interferencias radioeléctricas, lo que requerirá al usuario la adopción de medidas apropiadas para evitarlas.

National Restrictions
Indoor Operation The Stealth™ 600X Gen 2 operates in the 5150 to 5350 MHz frequency band and is restricted to indoor use only!
Antenna The Stealth™ 600X Gen 2 has integrated antennas which cannot be replaced.
Power Level Control: The Stealth™ 600X Gen 2 does not allow for customized power level control.
Operating Frequency: The operating frequency of the Stealth™ 600X Gen 2 is determined by the host console system. As such, it is important that the host console system is correctly configured to meet the local regulations.



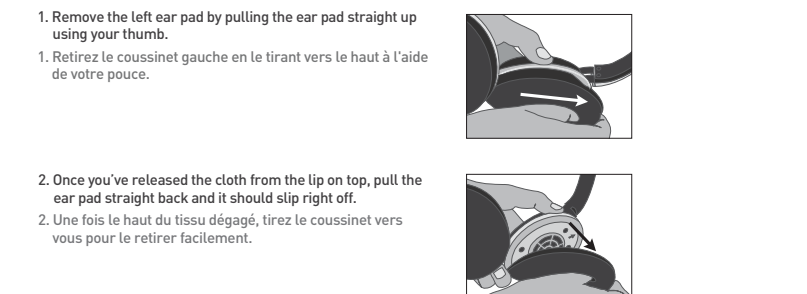
This symbol on the product or its packaging indicates that this product must not be disposed of with your other household waste. It should be taken to a designated collection point for the recycling of waste electrical and electronic equipment. The separate collection and recycling of your waste equipment at the end of its useful life will help conserve natural resources and ensure that it is recycled in a manner that protects human health and the environment. For more information about where you can drop off your waste equipment for recycling, please contact your local authority, or where you purchased your product.

Turtle Beach Europe Ltd. is obligated as a producer with a main activity of selling under the Producer Responsibility Obligations (Packaging Waste) Regulations 2007. To fulfil our obligation we are registered with Comply Direct and their Recycling Room. Here you will find advice and information on packaging waste management, recycling symbols and the waste hierarchy principles of reduce, reuse and recycle.
<http://www.complydirect.com/the-recycling-room/>

Please visit the following URL for a complete copy of the Declaration of Conformity: <http://www.turtlebeach.com/homologation>

Mexican IFT-008 Compliance Statement
"La operación de este equipo está sujeta a las siguientes dos condiciones: (1) es posible que este equipo o dispositivo no cause interferencia perjudicial y (2) este equipo o dispositivo debe aceptar cualquier interferencia, incluyendo la que pueda causar su operación no deseada."

To access the rating label: Pour accéder à l'étiquette :



1. Remove the left ear pad by pulling the ear pad straight up using your thumb.
1. Retirez le coussinet gauche en le tirant vers le haut à l'aide de votre pouce.

2. Once you've released the cloth from the lip on top, pull the ear pad straight back and it should slip right off.
2. Une fois le tissu délogé, tirez le coussinet vers vous pour le retirer facilement.

To replace the ear pad, follow the same process in reverse.
Pour remettre le coussinet en place, veuillez suivre la procédure inverse.

Not seeing what you're looking for here?
Visit turtlebeach.com/support for the latest Tech Support information.

Vous n'avez pas trouvé ce que vous cherchiez ?
Rendez-vous sur turtlebeach.com/support pour consulter les dernières informations de l'assistance technique.