

VEIKK



8 Shortcut Keys perfect your creating process

User Manual

BATTERY-FREE PEN TABLET

VK1060 Graphic Pen Tablet

www.veikk.com

Safety Precautions

- ⊘ Do not use this product in a control system that requires a high degree of safety and reliability.

In such a system, this product may negatively affect other electronic devices and malfunction due to the effect of those devices.

- ⚠ Turn the power off in the areas where electronic devices are prohibited.

On board an aircraft or in any other location where electronic devices are prohibited, please unplug the USB connector from the tablet to turn it off.

- ⊘ Keep out of reach of children to avoid danger.

Make sure that a child does not put the pen or pen tip in his/her mouth.

The pen tip or side switch cover could be detached and be accidentally swallowed.

- ⊘ Do not place this product on an unstable surface.

Placing this product on an unstable or tilted surface or in a location exposed to excessive vibrations could cause it to fall off which may damage the product.

⊘ Do not place heavy objects on top of this product.

Do not step on or place heavy objects on this product as this could damage it.

⚠ Avoid high or low-temperature locations for storage.

Do not store this product in a location where the temperature drops below 5 °C or goes above 40 °C and in locations subject to excessive temperature fluctuations to avoid damage to the product.

⊘ Do not disassemble.

Do not disassemble or modify this product as this could expose you to heat, fire, electric shock and injury. Disassembling the product will also void your warranty.

⊘ Do not use alcohol for cleaning.

Never use alcohol, thinner, benzene or other mineral solvents as they could discolor or cause deterioration to the product.

⊘ Do not expose to water.

Do not place glasses or vases filled with water or other liquids near this product. Exposure to water or liquid could damage the product.

- ⊘ Do not place metal objects on this product during operation.

Placing metal objects on this product during operation could cause it to malfunction or damage it.

- ⊘ Do not strike the pen against hard objects.

Striking the pen against hard object could damage it.

- ⊘ Do not handle the pen with soiled hands.

The pen is a high-precision instrument. Handling it with soiled hands or using it in locations exposed to dust or strong odors may cause the entry of foreign matter which will result in breakdown.

Limitation of Liability

VEIKK shall in no event be liable for damages resulting from fires or earthquakes, those caused by third parties and those arising from user misuse, abuse or neglect.

VEIKK shall in no event be liable for incidental damages-including but not limited to loss of business income, interruption of business activities, corruption or loss of data that arise out of the use or failure to use this product.

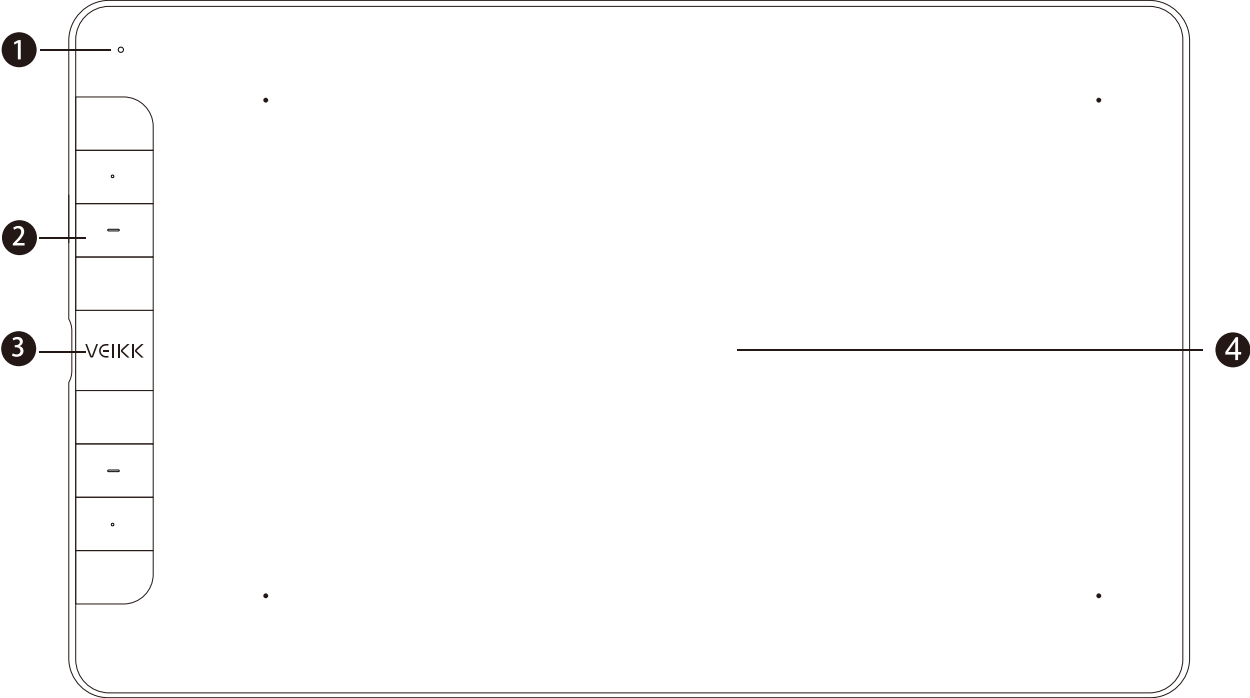
VEIKK shall in no event be liable for damages resulting from uses not documented in this manual.

VEIKK shall in no event be liable for damages from malfunction caused by connection to other devices or use of third party software.

Catalog

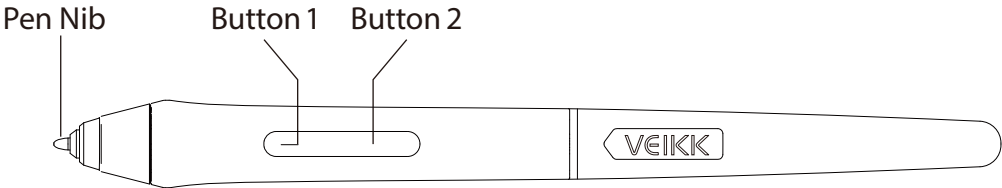
| | |
|---------------------------|---|
| 1.Product Overview..... | 1 |
| 2.Packing List..... | 2 |
| 3.Installing Driver..... | 2 |
| 4.Tablet Connection..... | 3 |
| 5.Replacing the Nibs..... | 4 |
| 6.Specifications..... | 4 |
| 7.Driver Settings..... | 5 |

1.Product Overview



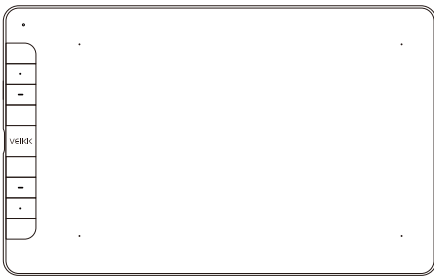
- 1 LED Indicator
- 2 Shortcut Keys
- 3 VEIKK Logo
- 4 Active Area

Pen



Note: The passive pen requires neither battery nor charging.

2.Packing List



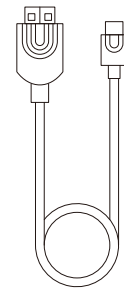
VK1060 Pen Tablet



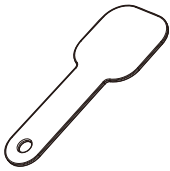
Battery-free Pen



Pen Pocket



USB-A to USB-C
Cable



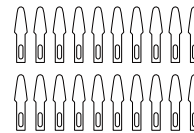
Nib Removal



Quick Start Guide



Drawing Glove



Pen Nibs

3.Installing Driver

3.1 OS Support

Windows 11/10/8/7(32/64 bits) / Mac OS 10.12 or later

Linux OS / Chrome 88 or later

Android 6.0 or later (Except Samsung Android device)

3.2 Installation

For Mac OS, Windows and Linux OS computer:

1. Before installing the driver, please uninstall all tablet drivers from your computer and keep all antivirus programs and the drawing software closed.
2. Connect the tablet to your computer before installation (Please refer to 4.Tablet Connection).
3. Please download the driver from www.veikk.com.
4. Click Set up.exe and follow onscreen instructions.
5. Restart your computer after installation.

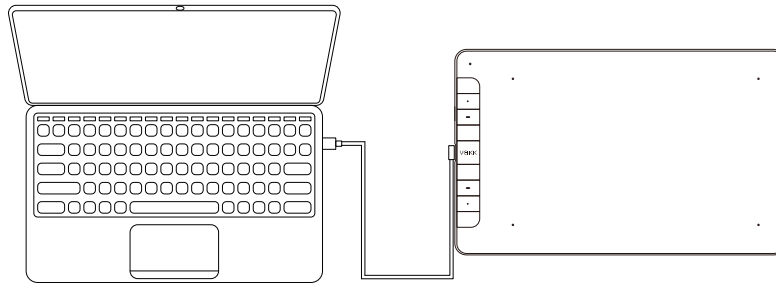
For Chrome OS computer and the Android mobile phone:

No need to install VEIKK driver on the Chrome OS computer and the Android mobile phone.

4. Tablet Connection

For Mac OS, Windows and Linux OS computer:

1. Connect the tablet to your computer with USB cable.
2. Open the driver interface. If the product model shows at the upper left corner, this indicates that the tablet has been connected successfully. You can start using your tablet.



For Chrome OS computer:

Connect the tablet to your Chrome OS computer with the USB cable, then you can start using your tablet.

Note: The shortcut keys of the pen and tablet can't work on the Chrome OS computer.

For Android mobile phone:

1. Please connect the tablet to your mobile phone with the OTG adapter.
2. Choose the most comfortable way you like to use the tablet.
 - A. By default, the working area of the tablet is 10*6 inch, but you need to rotate the tablet as shown in Figure 1.
 - B. Press K1 and K8 at the same time, the working area of the tablet is 3*6 inch, but you can use the tablet in the normal direction as shown in Figure 2.

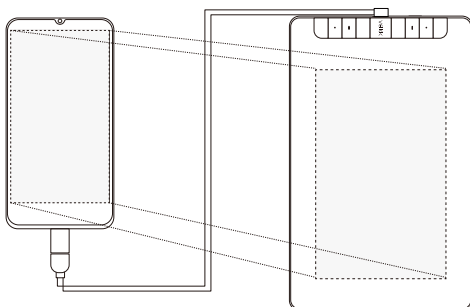


Figure 1

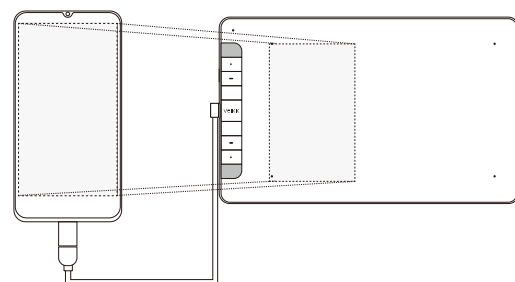


Figure 2

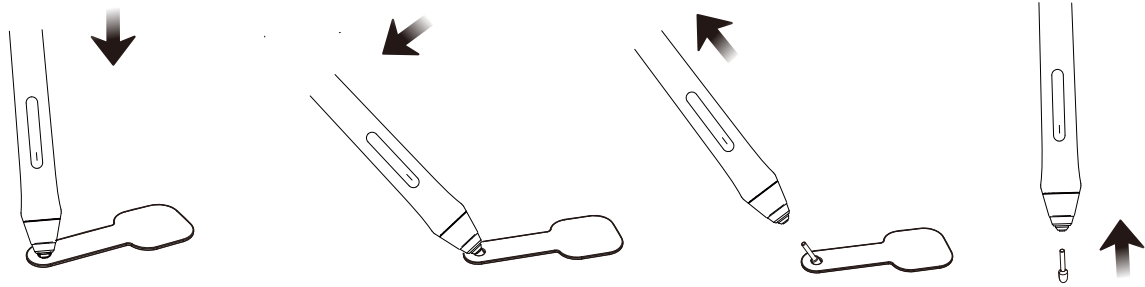
Note1: Works in mobile phone vertical screen mode only.

Note2: For some mobile phones, you need to enable the OTG function manually in the phone's settings.

Note3: The shortcut keys of the pen and tablet can't work on Android mobile phone.

5.Replacing the Nibs

When the pen nib is heavily worn, please replace the nib with the nib removal.



1. Insert the pen nib into the pen holder hole
2. Tilt the pen so that the pen holder can fully catch the pen nib
3. Pull out the nib
4. Insert a new nib into the pen and push it straightly until it stops

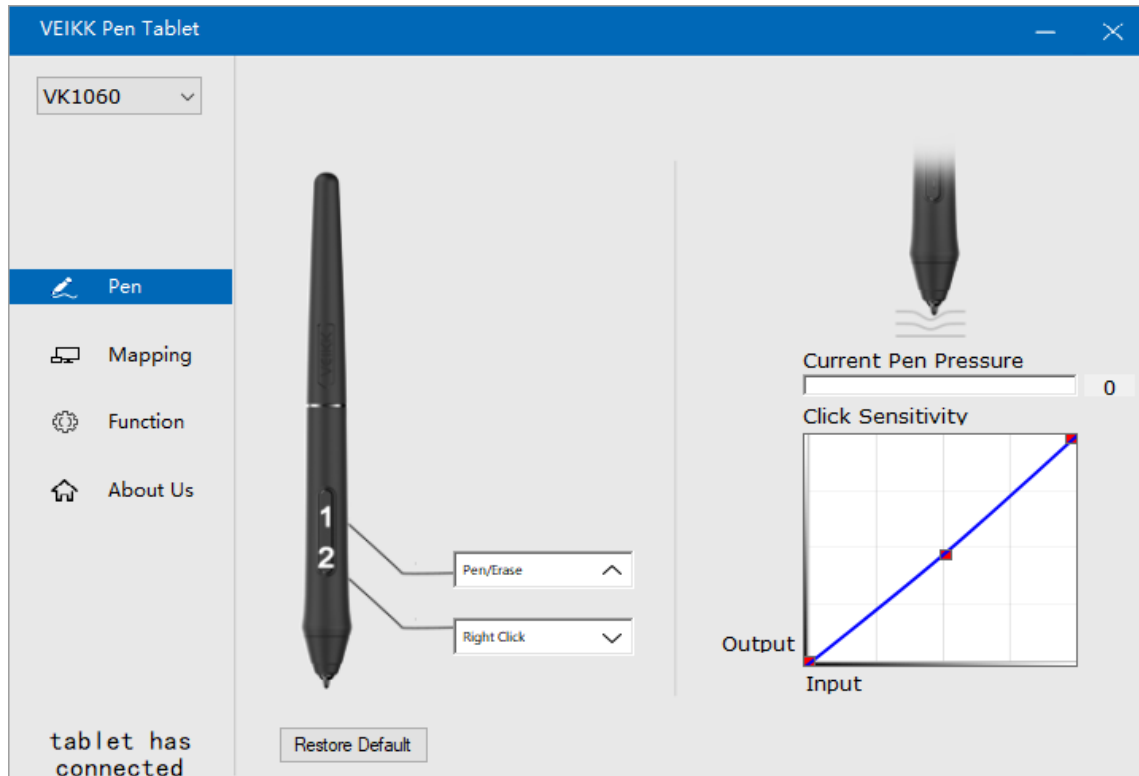
6.Specifications

| | |
|----------------------|----------------------|
| Model | VK1060 |
| Dimension | 340 mm ×213 mm ×9 mm |
| Working Area | 10 x 6 Inch |
| Pressure Sensitivity | 8192 Levels |
| Resolution | 5080 LPI |
| Reading Height | 10mm |
| Interface | USB |
| Keys | 8 Shortcut Keys |

7.Driver Settings

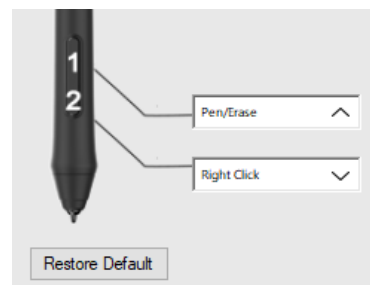
Windows:

7.1 Pen:



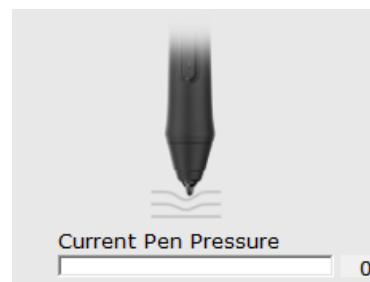
7.1.1 Pen Function Settings

You may customize the functions of pen buttons. Use the "Pen" option to program custom keystrokes.



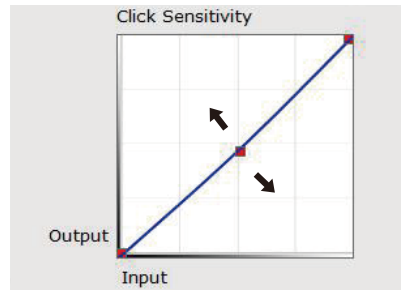
7.1.2 Current Pen Pressure

Current Pen Pressure shows the current pressure level being exerted on your tablet and can be used to test pen pressure.



7.1.3 Click Sensitivity

You can adjust pen pressure to "Output" or "Input" sensitivity on here.



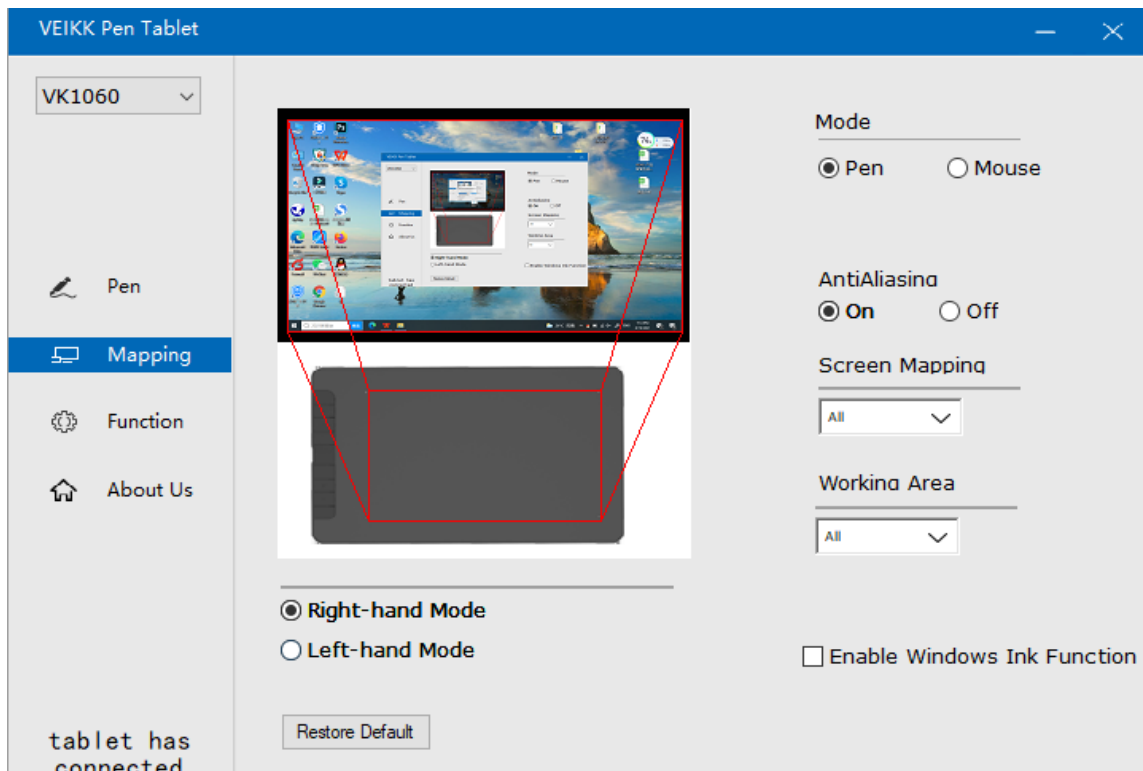
7.2 Mapping

Define the tablet area that will be mapped to the screen area.

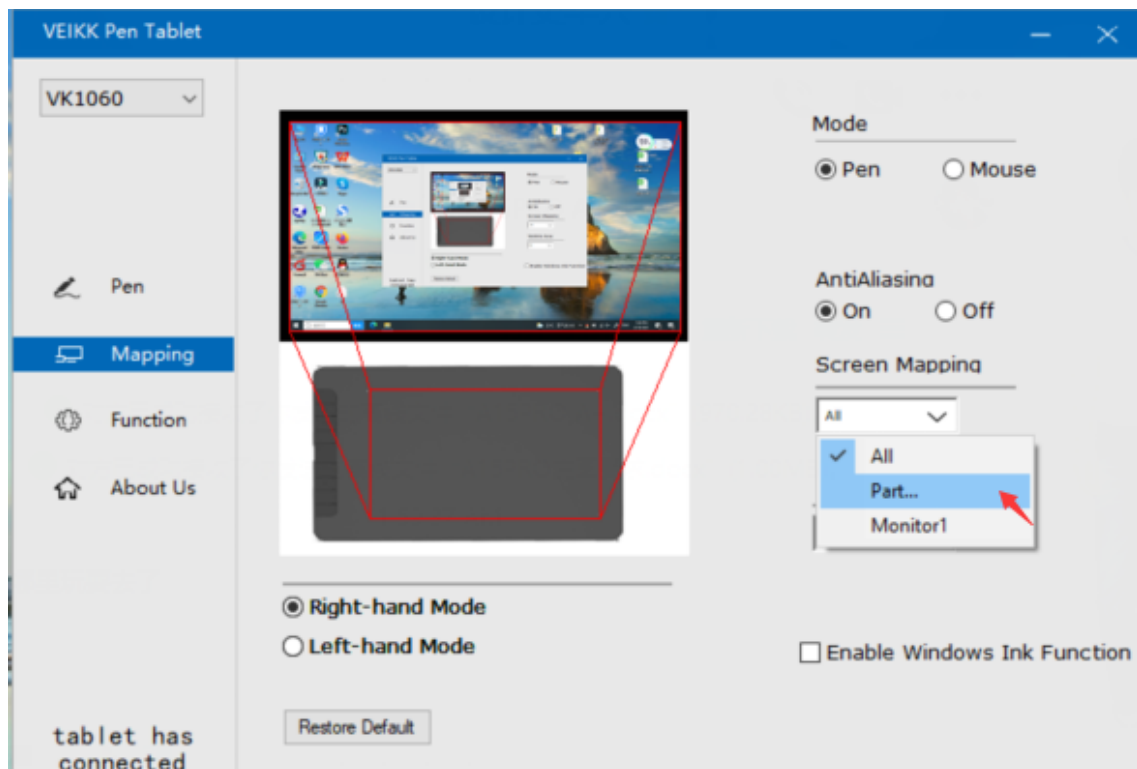
The screenshot shows the "VEIKK Pen Tablet" software interface. On the left, there is a sidebar with a dropdown menu set to "VK1060" and navigation buttons for "Pen", "Mapping" (which is highlighted in blue), "Function", and "About Us". At the bottom left, it says "tablet has connected". The main area is divided into two parts: the top part shows a Windows desktop with a red trapezoidal mapping box overlaid on the screen; the bottom part shows a grey tablet with a red rectangular mapping box overlaid on it. On the right side, there are several settings: "Mode" with radio buttons for "Pen" (selected) and "Mouse"; "AntiAliasing" with radio buttons for "On" (selected) and "Off"; "Screen Mapping" with a dropdown menu set to "All"; "Working Area" with a dropdown menu set to "All"; and a checkbox for "Enable Windows Ink Function" which is currently unchecked. At the bottom center, there is a "Restore Default" button.

7.2.1 Screen Mapping

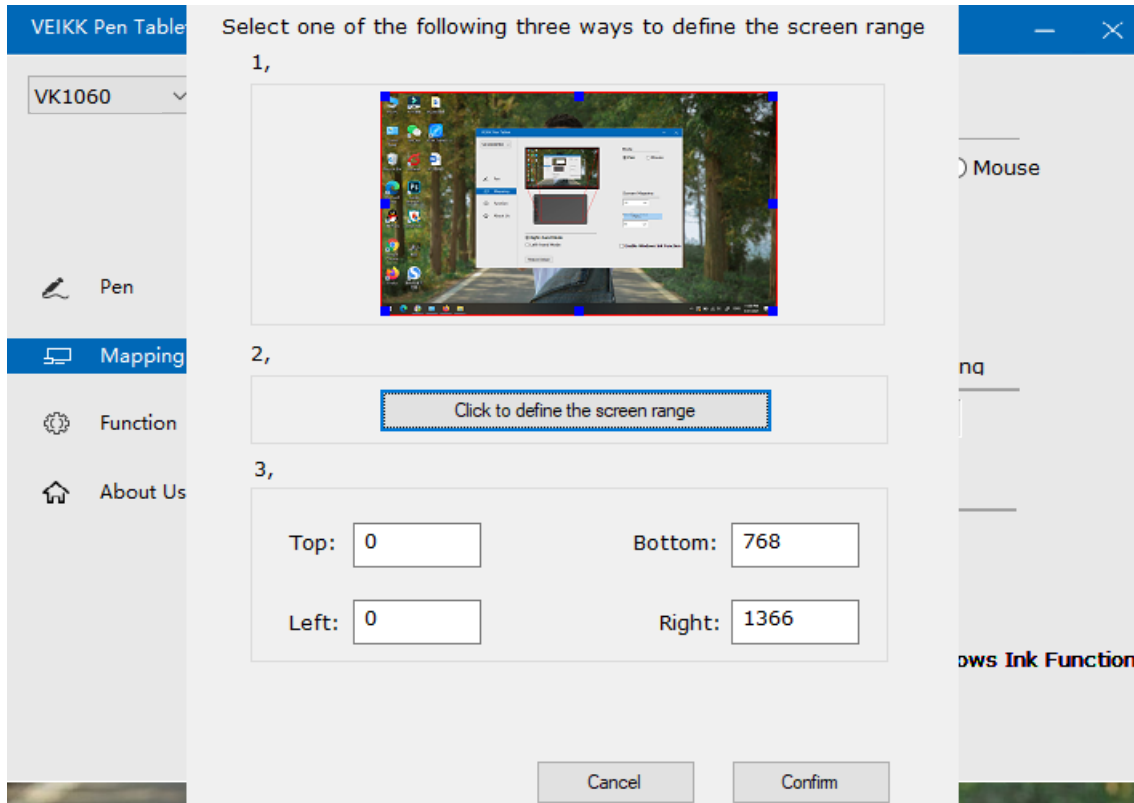
All Area: the entire active area of the tablet. This is the default setting.



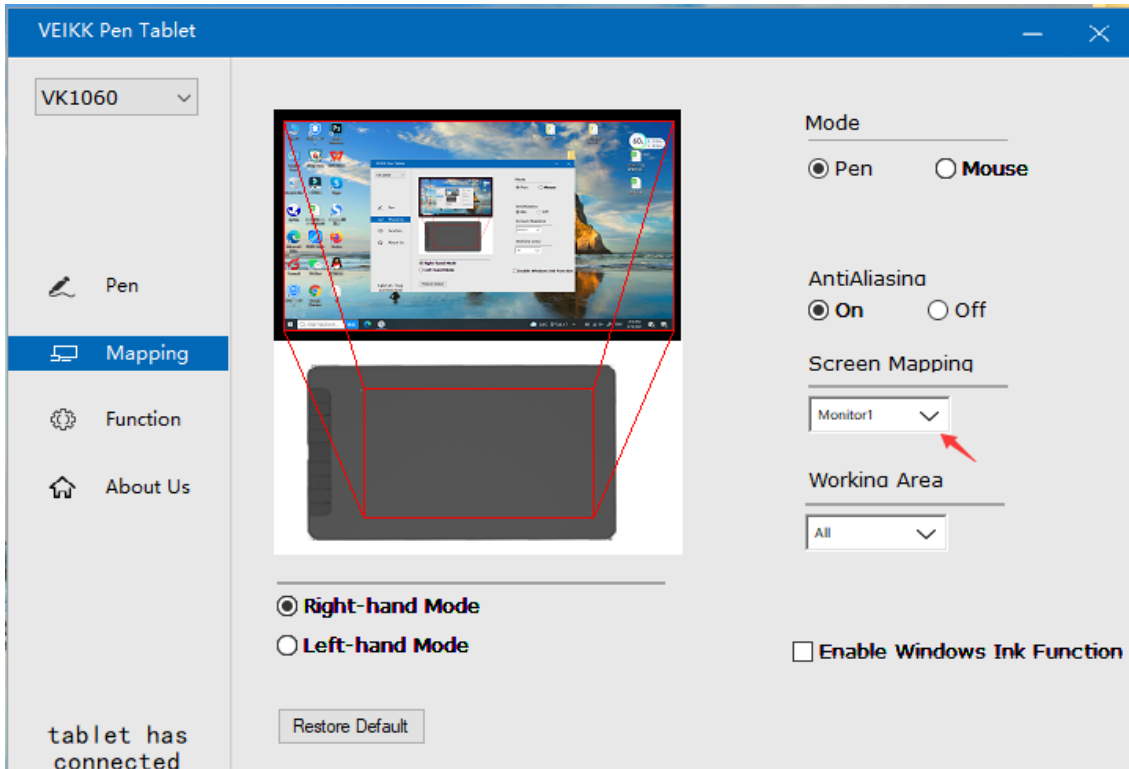
Part Area: Click Part



Then go to the next page, select one of the following three ways to define the screen range.

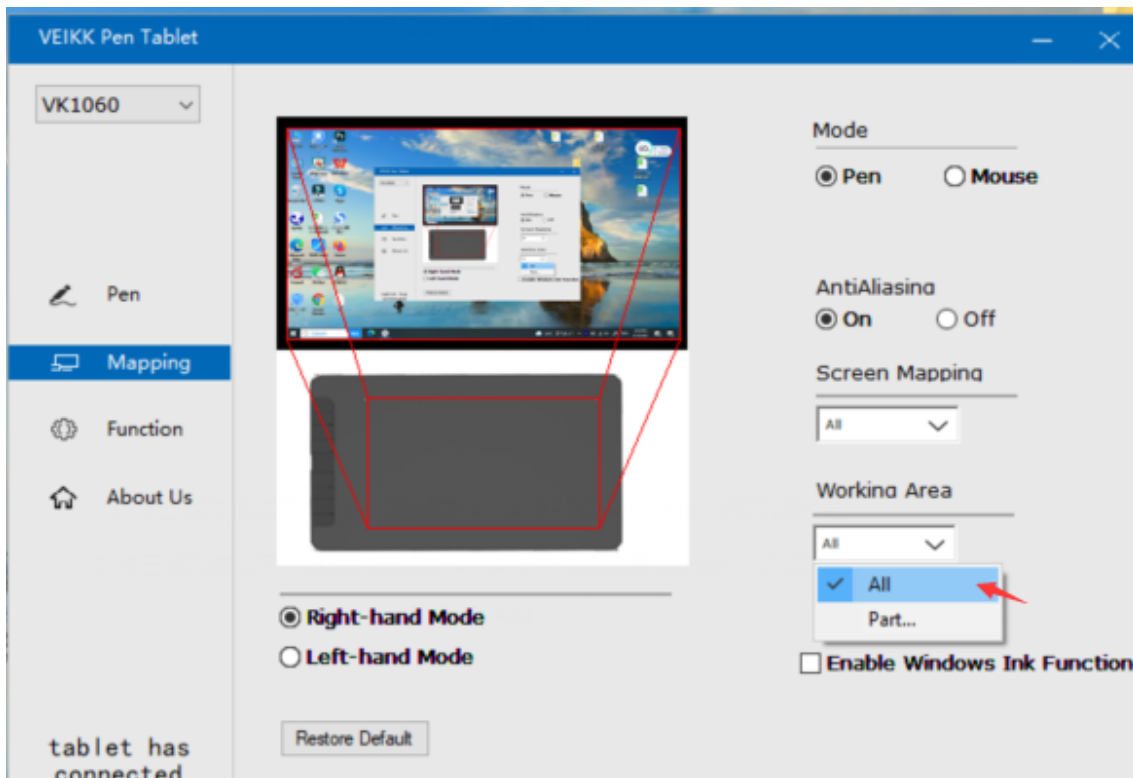


Monitor1: If more than one monitor is in use and you are in extended mode, you need to choose the related monitor on the driver interface which you are going to map to. If your monitors are in mirror mode(All monitors display the same content), the tablet maps to the entire space on each monitor and the screen cursor is displayed on each monitor simultaneously.

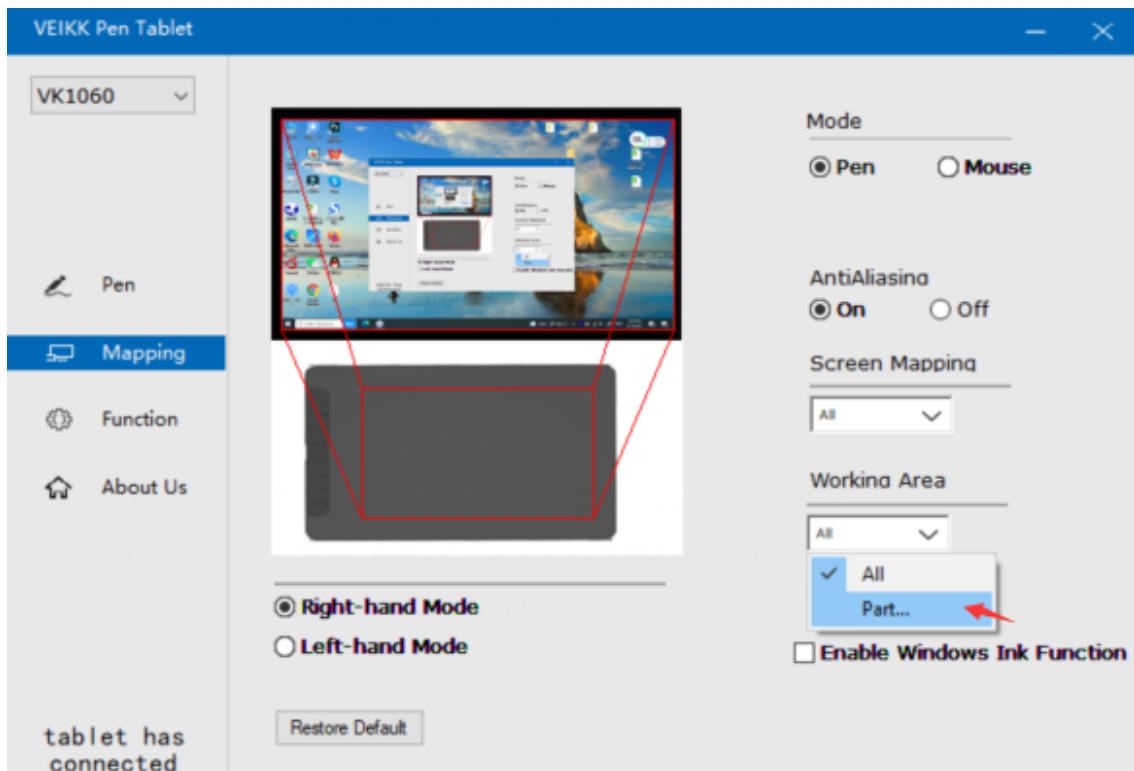


7.2.2 Working Area

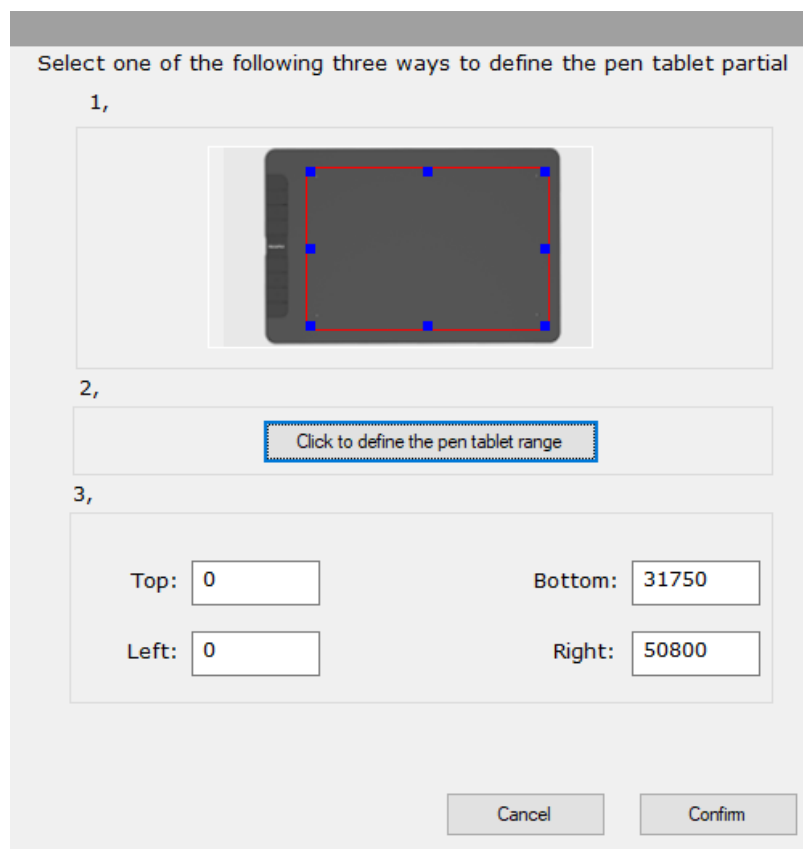
All Area: the entire active area of the tablet. This is the default setting.



Part Area: Click Part

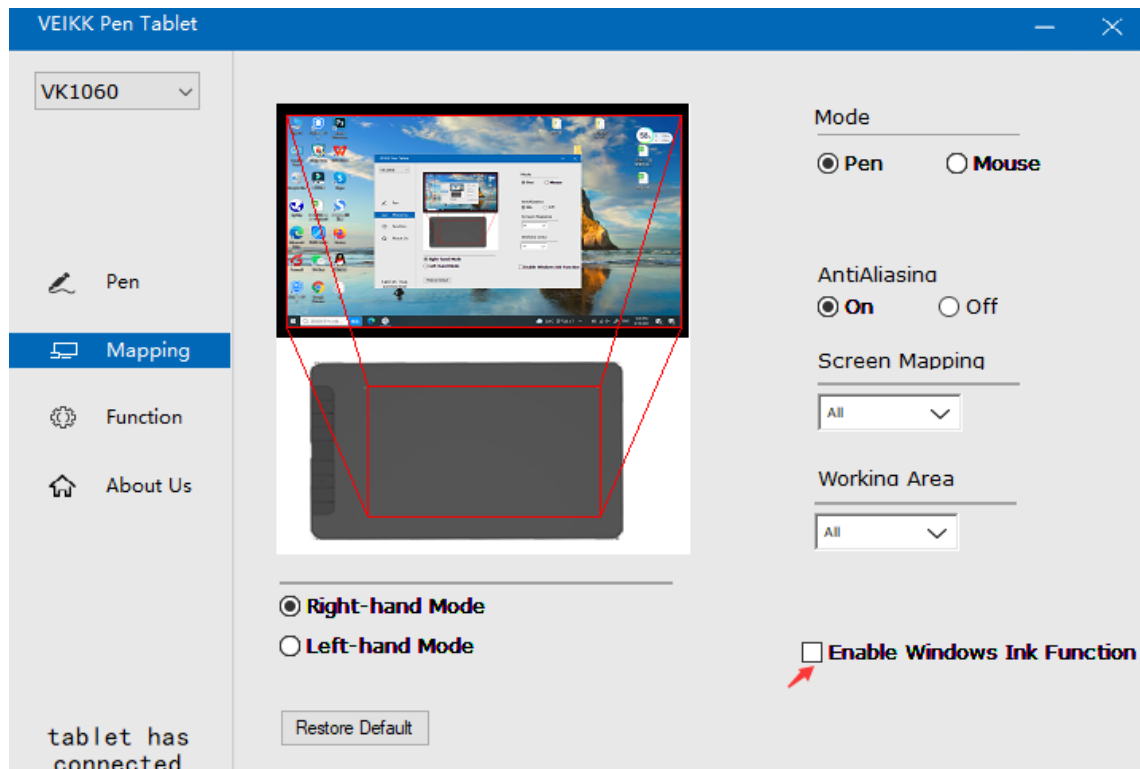


Then go to the next page, select one of the following three ways to define the pen tablet partial.



7.2.3 Enable Windows Ink Function

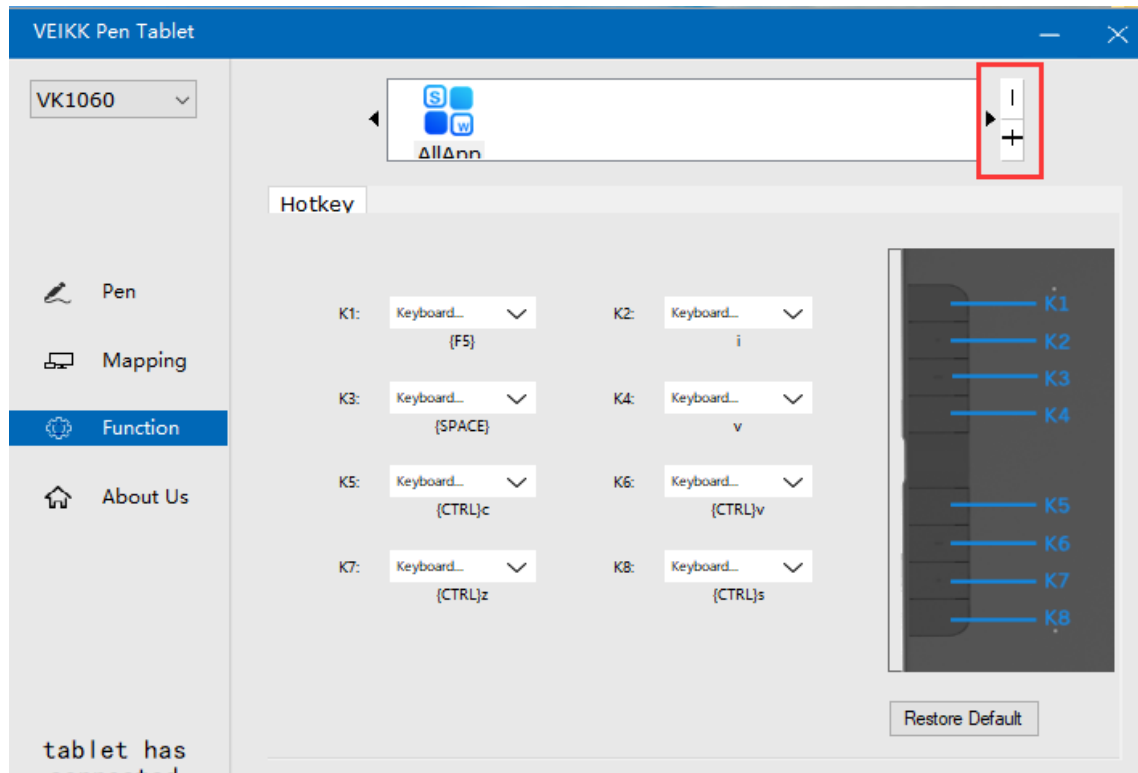
This capability can be toggled on and off here. Enabling this will allow support for Windows Ink and applications that run using Windows Ink.



7.3 Function

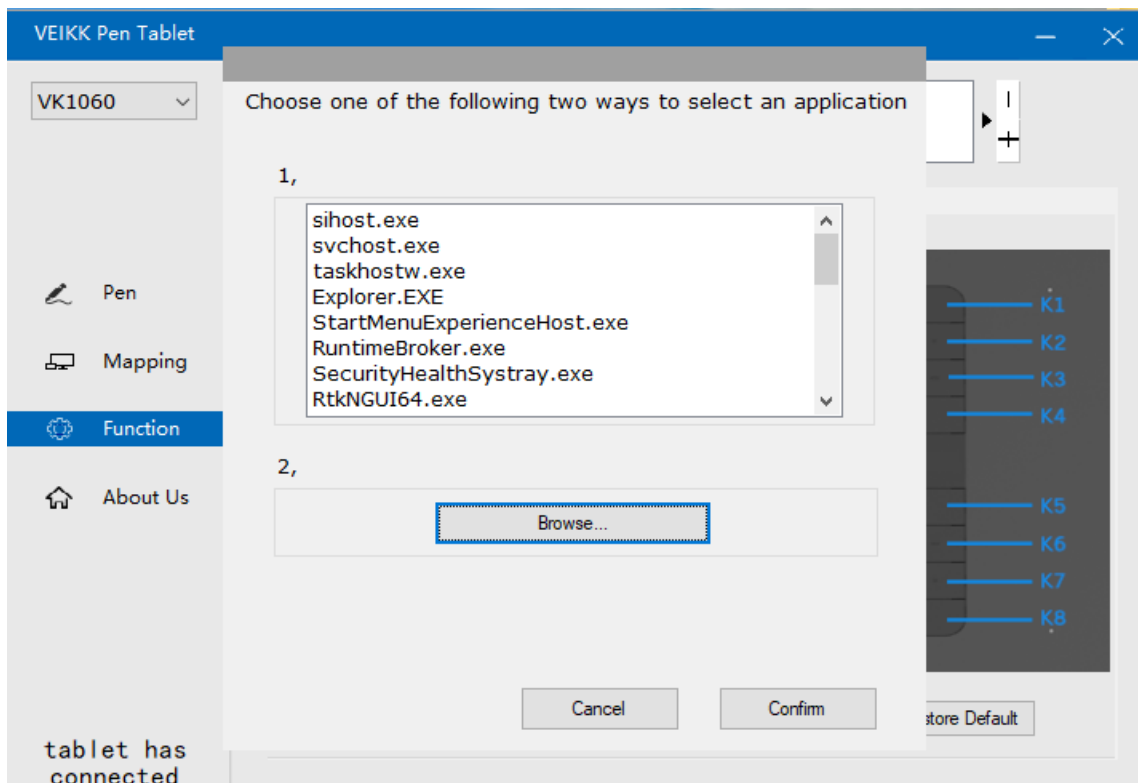
Customize the keys functions for different applications

7.3.1 Application List : You can add or remove software by "+" or "-"



“+”: Click “+” to add softwares, you have two ways to select an application.

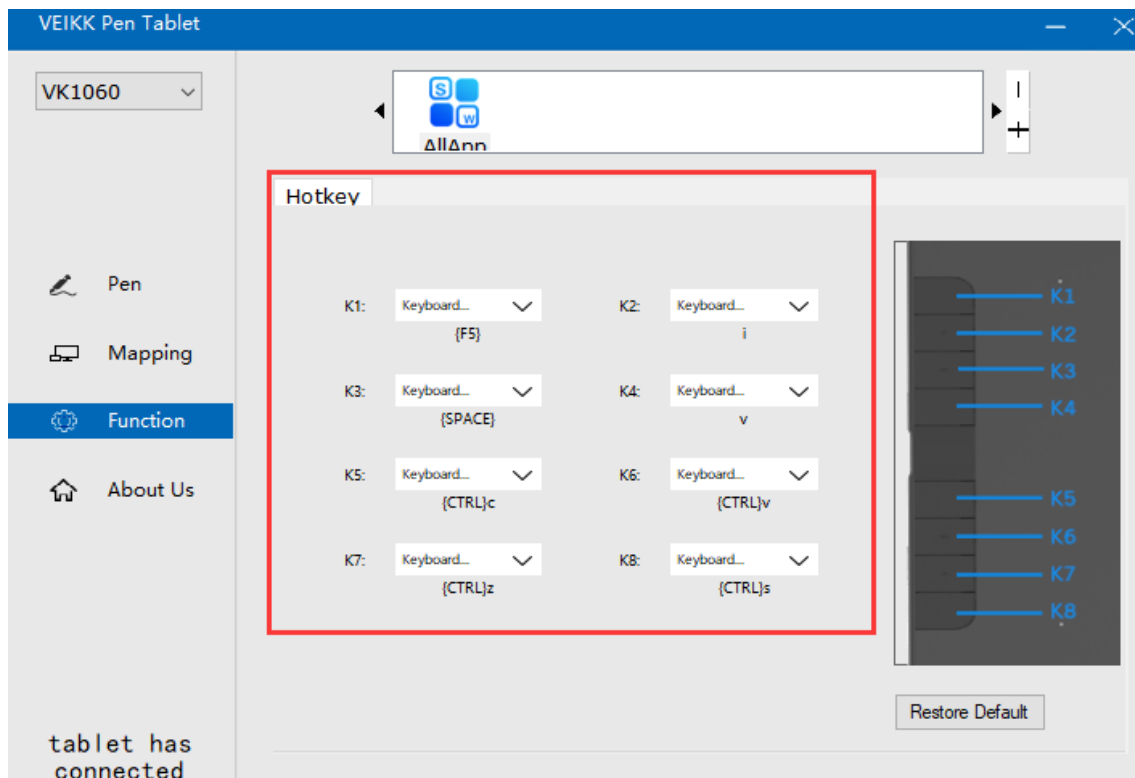
- 1、Choose from the dropdown(need to open the software firstly)
- 2、Choose from the browser



“-”: Click “-” to remove the softwares you added before.

7.3.2 Hotkey

Redefine Hotkey: Click on the title of the button. A dropdown menu will appear with a list of tool options. Choose the one you want to use.



Mac:

Note: Driver settings in Mac system are the same in Windows system.

Users who use Mac system can take reference to Windows system.

VEIKK

Any question, please contact us

Beijing Veikk E-commerce Co., Ltd.

Email : service@veikk.com

Skype : veikk service

Website : www.veikk.com