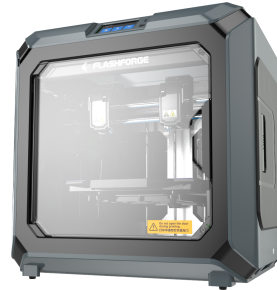


FF-3DP-2NC3-01

Flashforge Creator3 3D Printer

FRIENDLY & EASY TO USE

- Independent Dual-Extruder FDM printer
- Equipped with many versatile features, the Creator3 enables you to create practical & interesting objects for all your business or educational needs.
- Modular design dual extruder more possibilities, easier replacement
- Versatile, closable printing chamber
- Includes easy to use FlashPrint Slicing Software



Features

- Independent Dual-Extruder
- Nozzle Temperature Reaches to 300 °C
- Filament detecting sensor
- Very Large Build Size
- Easy Removal Nozzle
- Print Preview Function (Gcode)
- Multi-Language Package for Multilingual Operation
- Fully-Closed Design & Auto-Temperature Control System
- Self-Developed Slicing Software with Copyright
- Heated Bed
- CE FCC ROHS Certificates

Packaging

Q'ty in crtn, pcs	1
Crtn volume, CUM	0.3441
Crtn weight, kgs	52.04
Individual package size LxWxH:	740x610x730 mm
Carton size LxWxH:	750x620x740 mm
Country of origin	CN
Barcode	8716309108331
Customs code	8477809990

Package contents

3D Printer
Filament spool
Quick start guide
Power cable
Metal scraper
USB stick
Waste box
PTFE tube
Unclogging pin tool
Wrench
Screwdriver
Allen wrench
Glue stick

Copyright © 2009–2022, Gembird Software Ltd.

Specifications

Principle: FDM

Build size: up to 280mm x 250mm x 200 mm

Filament: PLA/ABS/TPU/PVA/HIPS/PETG/WPC/Nylon spool, 1.75mm

Print precision: ±0.10 mm

Positioning precision: Z axis 0.0025 mm, XY axis 0.011 mm

Layer thickness: 0.05 0.4 mm

Nozzle diameter: 0.40 mm

Extruder temperature: up to 300 °C

Connection USB stick / Ethernet / WIFI

Operation system Win XP/Vista/7/8/10; Mac OS; Linux

Input power: 100 240V AC, up to 500 W

System requirements

Windows XP/Vista/7/8/10; Mac OS X, Linux

Connection: USB drive, LAN, WiFi

Certificates

