

INSTALLATION STEPS

Washing machine rack installation instructions

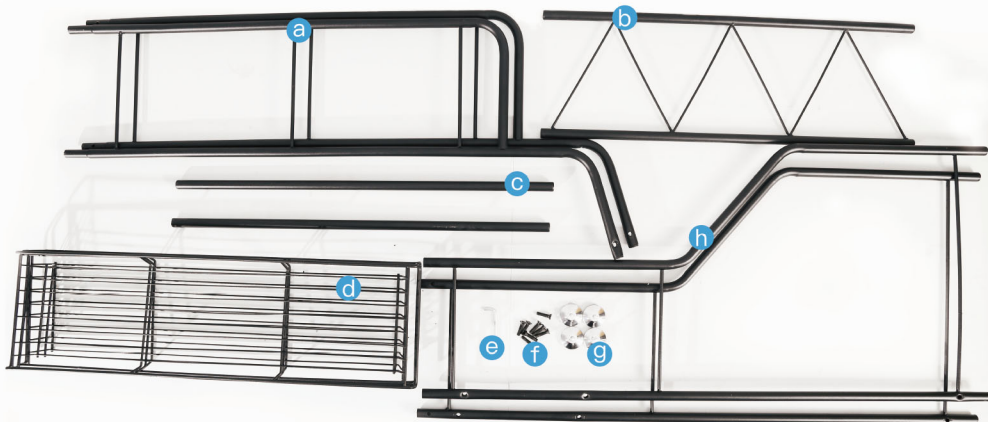


INSTALLATION STEPS

Installation accessories



- a. Upper bracket X2
- b. Double rod crossbar
- c. Single pole crossbar X2
- d. Square hanging basket X3
- e. Hexagonal wrench
- f. Screw X8
- g. Screw foot pad
- h. Lower bracket X2

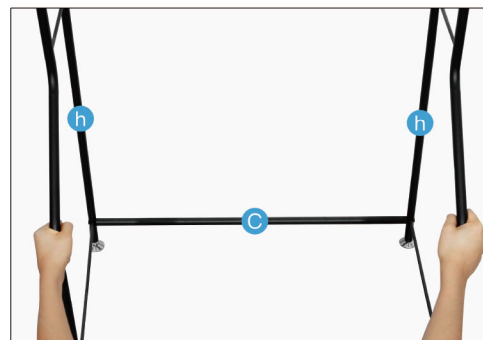


INSTALLATION STEPS

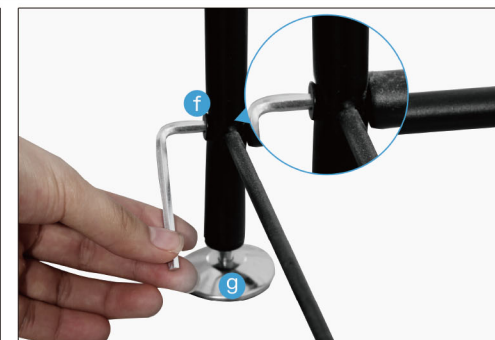
Installation steps



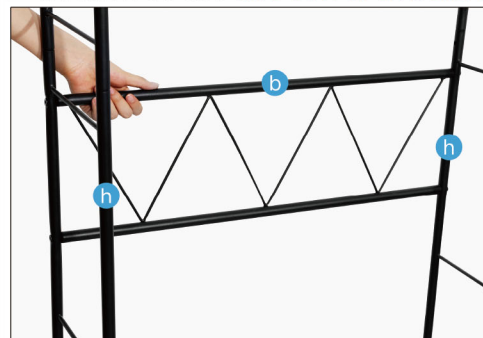
PC: If you don't know the installation position and the name of accessories, please see the back.



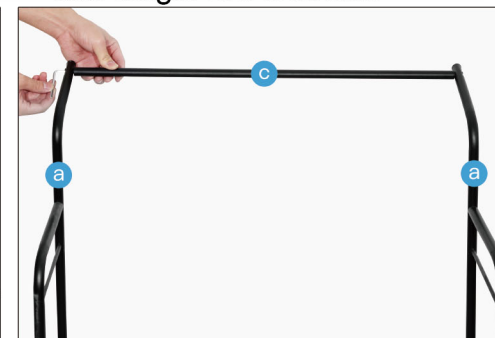
1. **Single rod crossbar** linking the bottom of the **two lower brackets**



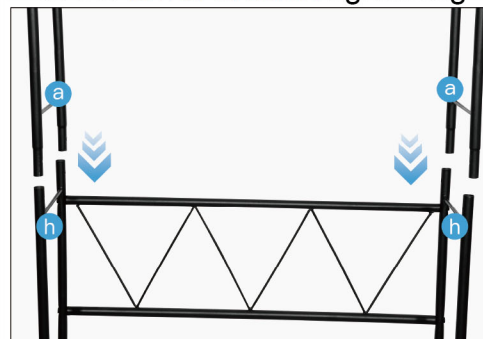
2. Tighten the bottom screw foot and single rod crossbar



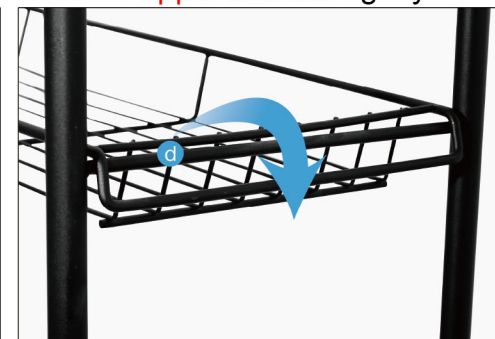
3. Install the **double rod crossbar** in the **lower bracket** tightening



4. install the **single rod crossbar** in the **upper bracket** tightly



5. snap the **upper bracket** into the **lower bracket**



6. **square hanging basket** snap into the side cross bar, ready to use