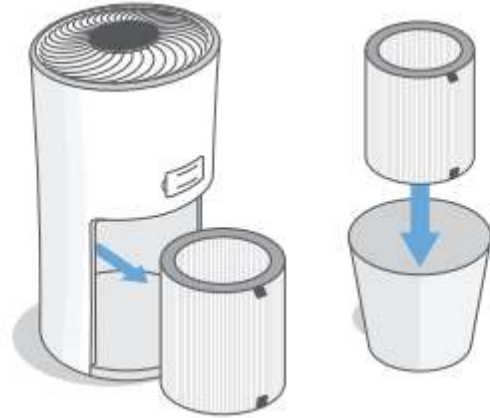


Replacing the Air Filter

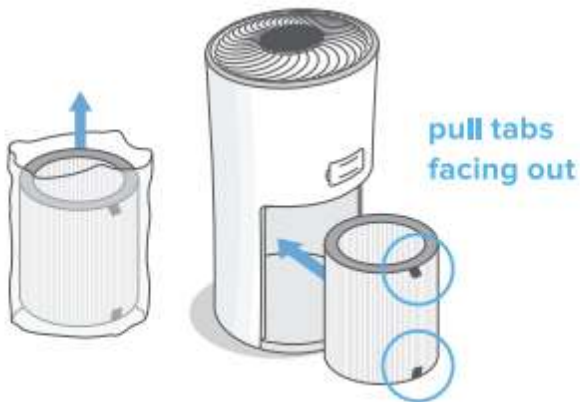
- 1 Unplug the air purifier and remove the filter cover.



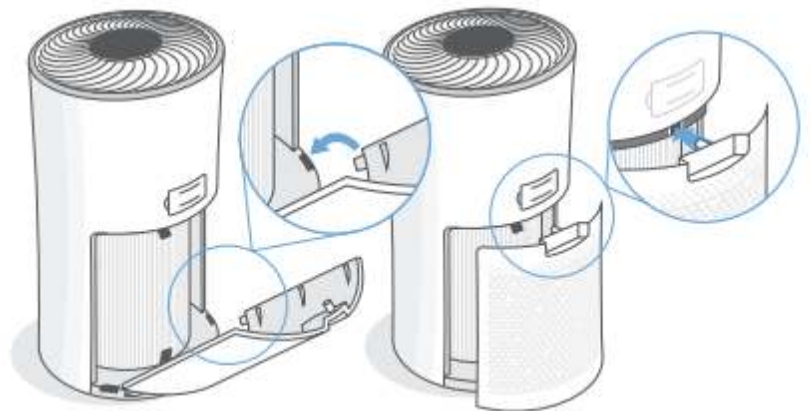
- 2 Remove the old air filter and properly dispose of it.



- 3 Unwrap the new air filter and place it into the housing.




- 4 Properly replace the filter cover onto the housing.



- 5 Plug in the air purifier and turn it on.



- 6 Reset the air purifier by pressing and holding  for 3 seconds.

