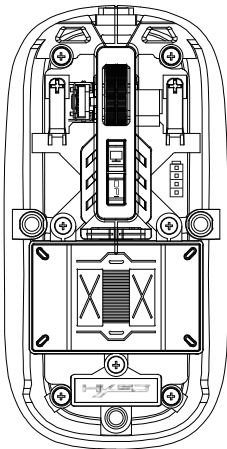




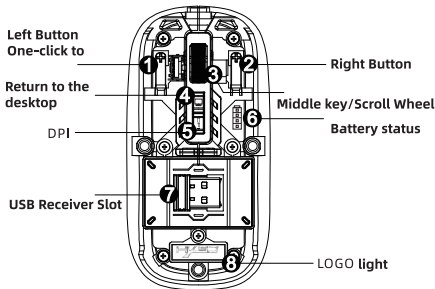
T900

Instruction Manual

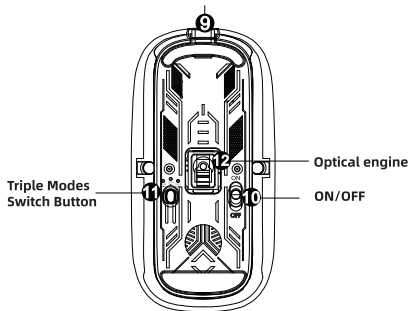


Thank you for choosing HXSJ T900 Bluetooth Wireless Triple mode mouse Please read the manual carefully before using this product.

Product Function Diagram



Type-C Charging Port



Instructions

2.4G connection

- Step 1: Plug the receiver into your computer's USB port.
- Step 2: Push the power switch at the bottom of the mouse to the "ON", and switch the button 11 to 2.4G mode, the corresponding light is flashing green, and then the green light off after connecting the device, enter the normal mode.
- Step 3: Move the mouse or press the left/right button to use it normally.

Bluetooth connection(BT1-BT2)

- Step 1: Push the power switch at the bottom of the mouse to "ON", click the mouse three modes button 11, the blue lights corresponding to the BT1/BT2 mode flashes, and start to enter the code mode.
- Step 2: Open the tablet/computer/phone, click the "Bluetooth" interface in the settings menu, connect the pairing mouse (BT5.1 Mouse). After the device is connected, the blue light goes off, enter normal mode.
- Step 3: Move the mouse or press the left/right button to use it normally.

Triple-mode Switching Method

If the mouse is connected to three devices, you can press the three-mode switch button 11 to be flexible among the three devices Switch, the corresponding light will be on and flicker, then off, the device can work normally.

Charging Method

It is recommended to use the USB interface of the computer to charge the mouse. When the mouse is charged, the battery light at the front of the 6cell flashes. The 6 battery light is always on when fully charged.

Battery Warning

When the mouse is about to run out of power, the last bar of the 6 battery light flashes an alarm prompt.

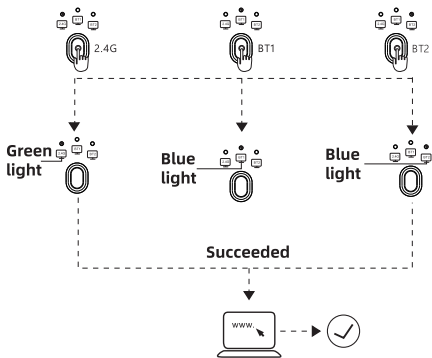
Product parameters

Mouse size	L113*W57*H25mm
Product material	PC+ABS
Product Weight	76±5g
Working mode	2.4G+BT1+BT2
Working current	30mA
Battery capacity	400mAh
Working range	Optical technology
Four gears of DPI	800-1200-1600-2400
DPI light mode	Red(800)Green(1200)Blue(1600)Purple(2400)
Light mode	Colorful breathing light effect

Instructions and precautions for use

1. When the mouse cursor moves slowly, check whether the battery is low. Suggest timely charging.
2. If the mouse cannot be connected, check whether the power switch at the bottom of the mouse is on and select a correct connection mode or move the USB receiver to another USB port.
3. If you do not use the mouse for a long time, manually turn off the power switch to save power.
4. If you do not use the mouse for a long time, it will automatically enter the sleep mode, move the mouse or press any key to wake up the mouse.
5. Please do not remove or try to repair the product, because doing so may cause damage.

LED Instruction

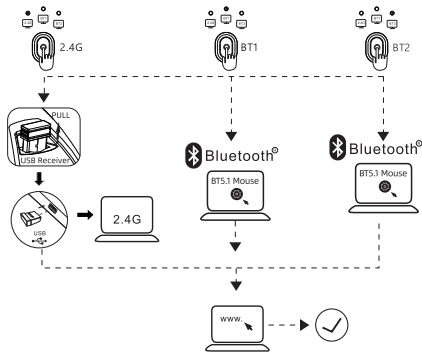


Charging prompt:
the first grid when charging
seconds return Bluetooth
Flashing prompt of power
connect lamp:
Charging completed the fully
charged lamp is always on

Low voltage prompt:
When the mouse is running
out of power, The last grid
of the battery light flashes Alarm
prompt

Long press this
key for 2seconds return
Bluetooth connect

Easy Manual



Receiver Description

