

## Read before installation:

Please make sure the door is closed and then install the door lever lock, or you may be locked.

## Installation



Image 1

Image 2

Image 3

- Step 1: Clean the part where you need to install.(Image 1)
- Step 2: Make sure the door lever lock is in "locked" position, and the white circle button is down.(Image 2)
- Step 3: Tear off the 3M VHB tape, paste the door lever lock where you want to install, and make sure after installation, the door can't be opened.(Image 3)

### **⚠ WARNING!**

- Please do not use the product for other purpose.
- The product can not substitute for adult and perform supervision on children.
- Please stop using in case of damage to the product.
- Assembly by an adult.

## How to Use

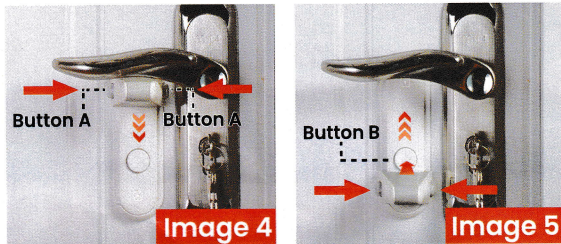


Image 4

Image 5

- 1.If the door lever lock was not in use, please press the double buttons A and push it down, once you hear with a "click",make sure the arm can't be pushed up.(Image 4)  
That means the door lever lock is unlocked.
- 2.If you want to use the door lever lock , please press the button B first and press the double buttons A, then push it up , once you hear with a "click", make sure the arm can't be pushed down. (Image 5)  
That means the door lever lock is locked .