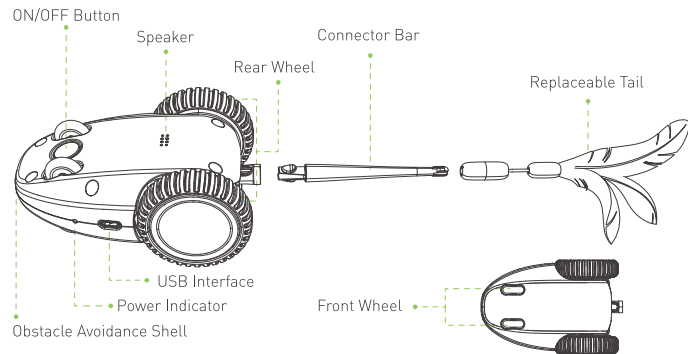


Product Overview

Furious Mouse



Accessories



Tech Specs

Body Dimension (mm)	110 (L) × 71 (W) × 48 (H)
Weight (g)	180
Materials	ABS + PP + TPE
Working Voltage (V)	3.7
Wattage (W)	2

Battery

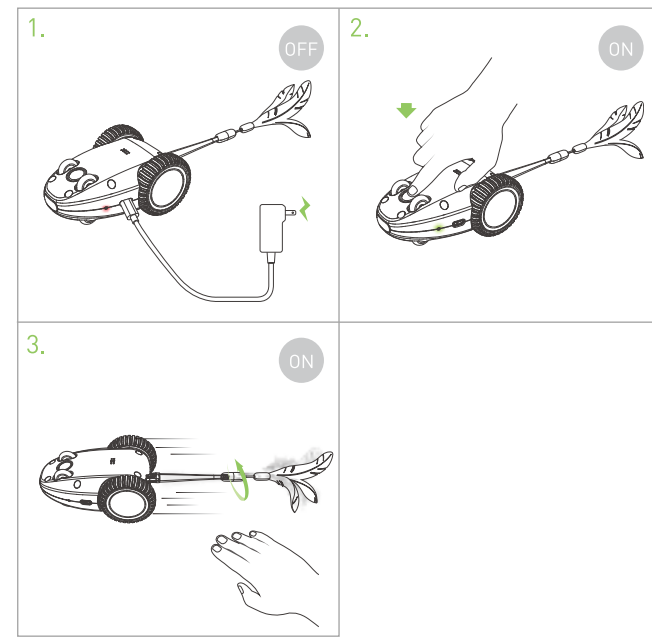
Battery Type	Polymer Lithium-Ion Battery
Capacity (mAh)	1000
Charging Time (Hours)	1.5-2
Working Time Per Charge (Hours)	2.5-3

How to start the device?

1. Get the device charged till the power indicator (red) turns off;
2. Press the ON/OFF Button and it will squeak; the power indicator will light green for five seconds;
3. Pat the device and put it on the floor, and it will move in auto mode.

Note:

1. Turn off the device before charging.
2. The green light is on in active mode and always off in standby mode.



How to play

1. Run for at least 90 seconds per session. Be able to detect obstacles and move backwards to avoid them. It is able to move even when upside down;
2. After every running session, the device will enter standby mode. It will squeak and shake every five minutes and remain motionless after half an hour. Tap to reactivate it;
3. The red light will flash to remind you of recharging when the power is running low.

NOTES

1. The device is especially designed for pets. This is not a child's toy. Please keep out of reach of children except under adult supervision.
2. Please use in clean and safe environment and keep it away from water, fire, high temperature and dirty place.
3. Not washable. Please wipe clean with moist cloth if it is stained.
4. Do not pull the tyres in case that they get deformed and don't rotate the wheels hard to avoid any damage to the device.
5. It is an electrical device. The power is on, during the charging period. It is electrically alive even if the switch is off. So please prevent your pet from chewing the USB cable to avoid electrical shock, when it is plugged in. Always unplug the device, when you finish the charging.
6. Check the device regularly, in case the core is damaged and the electrical power hurts the pet (Please be careful even the working voltage is very low).
7. Please change our replacement tails if your mouse tail is damaged or stained. Many options (sold separately) are available.

Catch me if you can!

The logo for PETGEEK, featuring the brand name in white, uppercase, sans-serif font centered within a light green circular background.

PETGEEK

Furious Mouse
User Manual