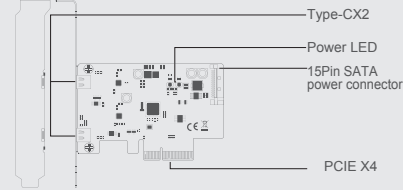


KC014 PCIe Card

### Introduction

Product name:

MAIWO KC014 PCIex4 to 2-port Type-C GEN2 interface extension card

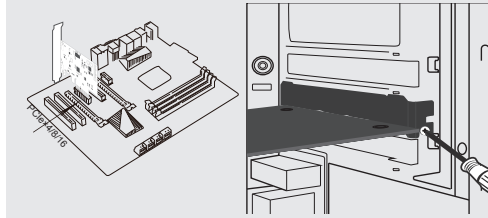


Product:	USB3.2 Gen2 PCI Express Card
Interface:	PCIe 3.0 x4 to type C
USB port:	Type C x2
Speed:	10Gbps
Power:	PCIe +15Pin SATA (subsidiary)
Compatibility:	Windows 7/8/10/,Linux

### Quick Installation Guide

Installation

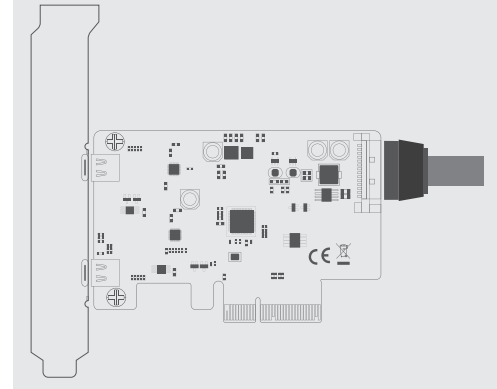
1. Insert express card to PCIe× 4/8/ 16 slot on motherboard;
2. Remark: make sure that motherboard include PCIe4/x8/x16 slot one at least.



### Quick Installation Guide

Installation

3. Connect 15pin SATA power cable with motherboard an dexpress card



①

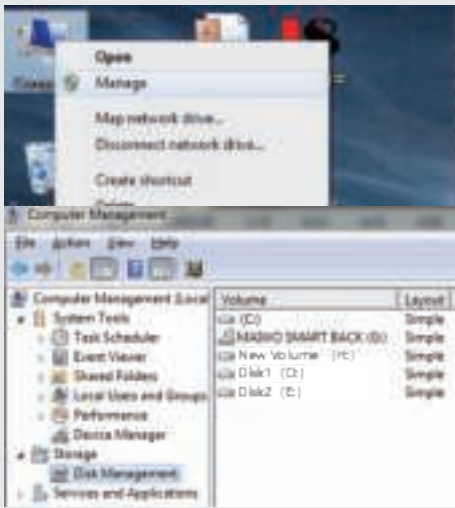
②

③

Note: Initialize the partitioned hard disk step when the USB interface is connected to the new removable hard disk

#### I. New hard disk format:

1. View "computer-Management-disk management" to Find the New disk.



④

#### II. New hard disk format:

2. Right click the "External disk", then click "New simple Volume".



⑤

#### III. Hard disk partition:

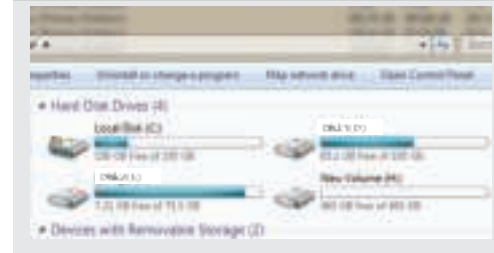
3. According to the instruction, choose the size of partition, then click "Next" to finish.



⑥

#### IV. Hard disk partition:

4. Then you can find the new hard disk in the "Computer", it's ready to be use.



initialization, partition and format

- 1.1 View "computer - Manage - disk management" to find the new disk .
- Remark: There two types MBR and GPT. SSD capacity <=2T, please choose MBR, if more than 2T, choose GPT.
- 2.2 Right click the "Disk 1", then click "New Simple Volume".

⑦