

Professional WiFi IP Camera Quick Setup Guide



**Please read this manual carefully before using this product
and keep it for future reference.**

1. About camera

1.1 Product introduction.

This is a HD IP camera for monitoring. It connects to the Internet to send and receive data, you can use it to remotely view real-time images from your mobile phone, computer or other device anytime and anywhere, it can save surveillance videos in the Micro SD card, computer or other device, The camera also supports alarm functions such as sending alarm emails, alarming phone message push and other functions.

1.2 Product should contain:

- ① IP Camera
- ② Power adapter
- ③ User manual
- ④ Network cable
- ⑤ WIFI Antenna
- ⑥ Screws bag



1.3 Product interface.



2. Connect camera

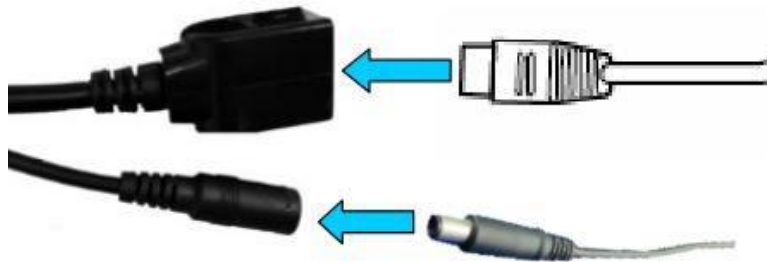
2.1 Connect network cable to router and plug in power adapter.



The router must be able to connect to the Internet!

Please use the standard power supply.

2.2 Connect network cable and power to the camera, it needs about a few minutes to self checking and then start working.



Network indicator light (green): always flashing means network data transmission is normal.

The camera will turn on AP mode when the camera is only connected to the power supply. you can connect the camera via the AP mode.

3. View via mobile phone

3.1 Download “CamHipro” from Google Play Store / Apple App Store or scan the QR code below to get APP information.



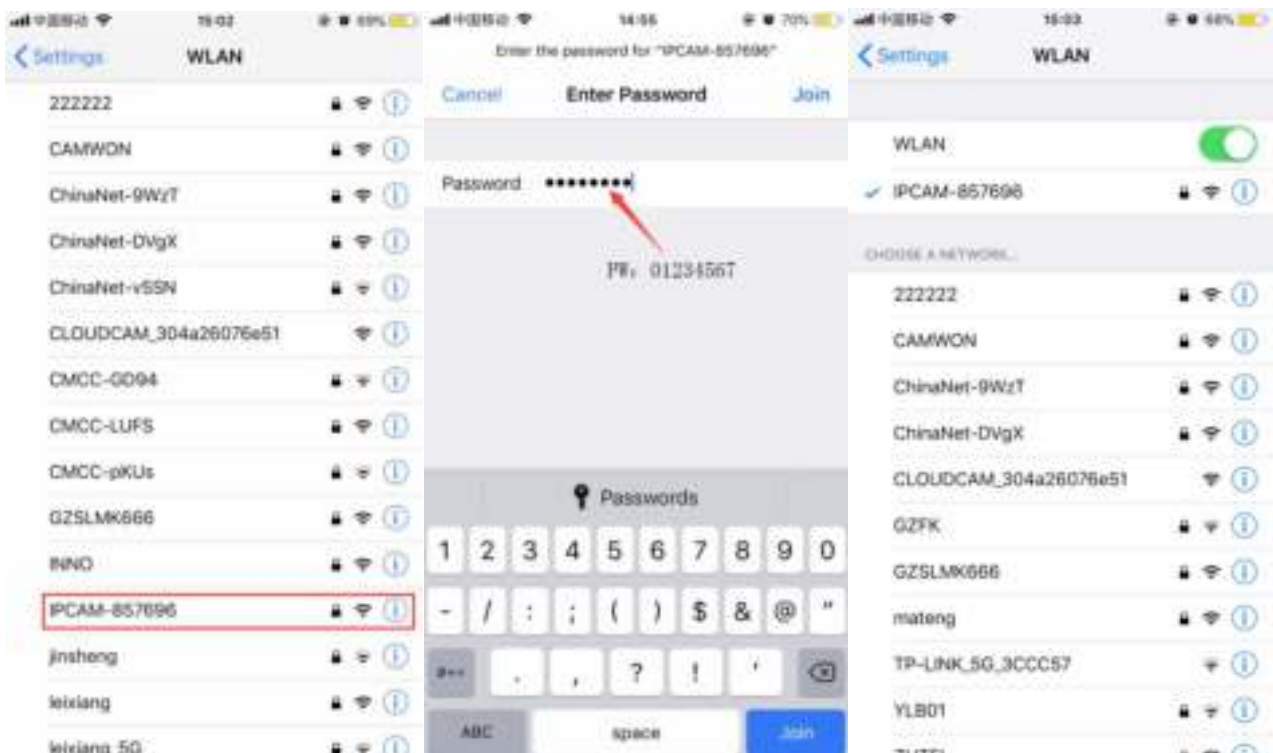
android



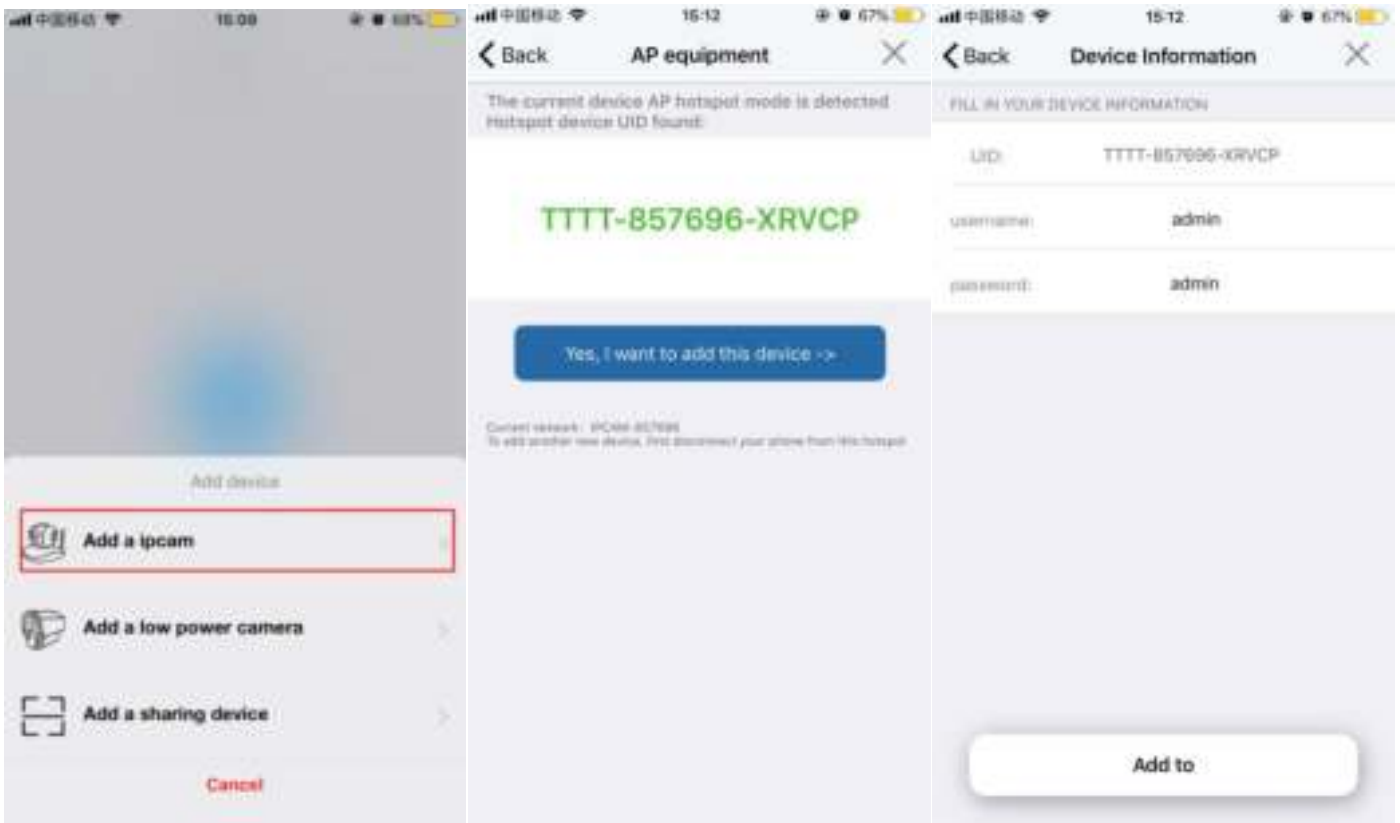
IOS

3.2 Run APP and Add Camera.

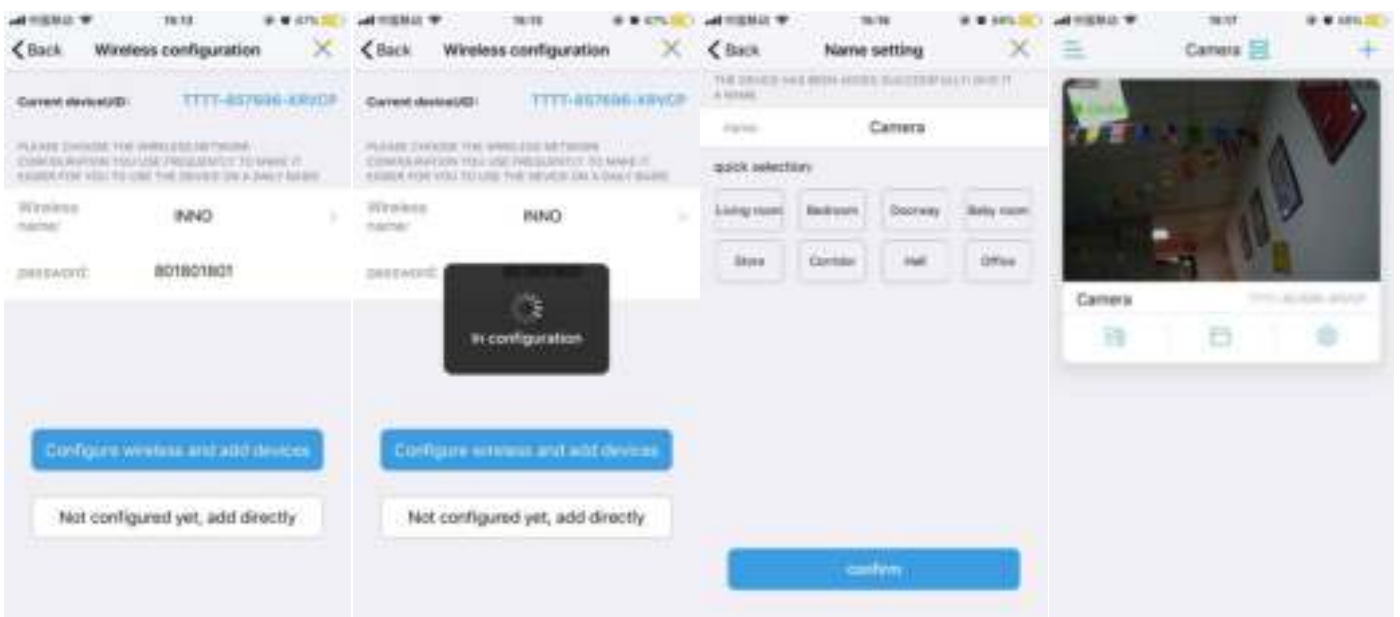
- Connect the wireless antenna to camera and power it.
- Wait 30 seconds, go to setting and find hotspot (IPCAM-XXXXXX) from camera, enter password ‘01234567’ to connect.



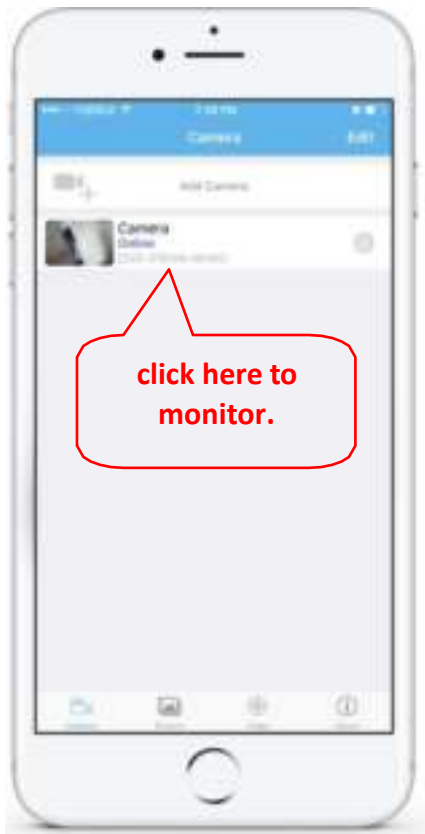
- Open the APP 'CamHiPro', click 'Add Camera' to add new device
- Follow the step, add 'AP equipment'



- Wireless configuration, connect to your own WIFI nearby
- Wait 30~40 seconds, camera will connect to your WIFI automatically
- Connect camera successfully

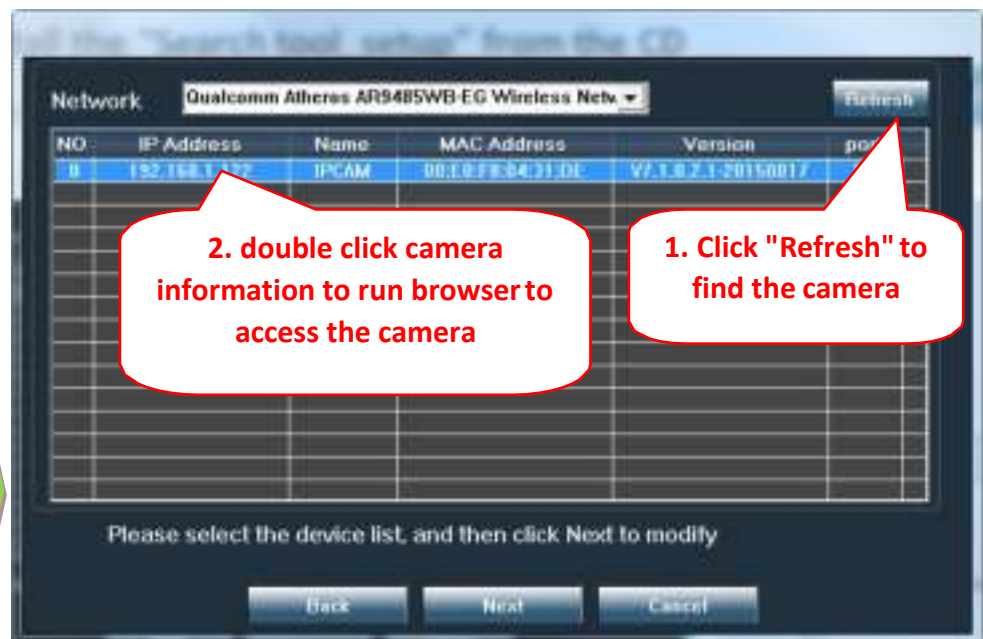


3.3 After adding the camera, click online camera to view real-time image.

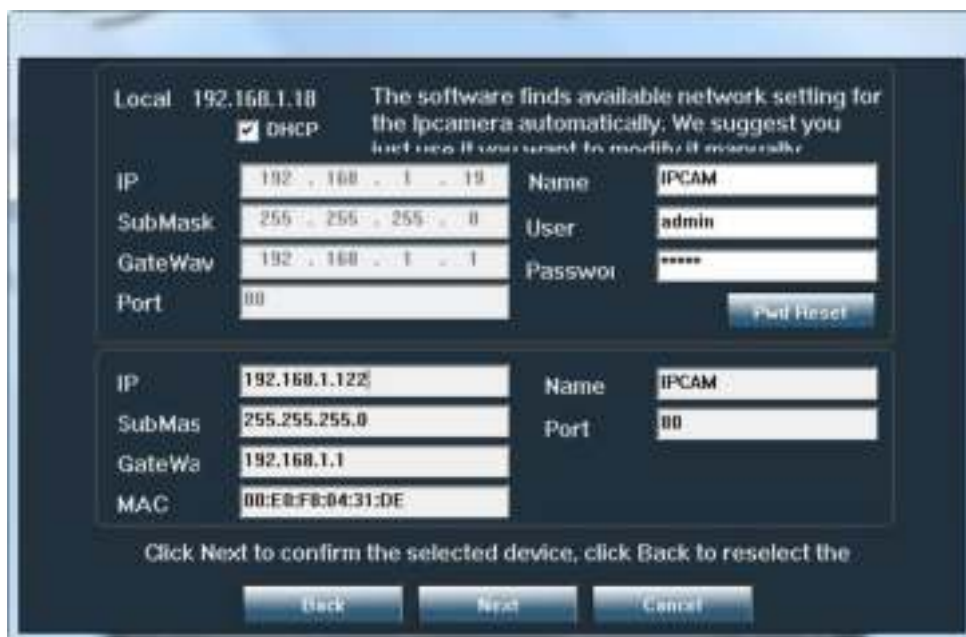


4. View via PC

4.1 Install the "Search tool" , then run it to find the cameras.



Click “Next” can modify network parameters of the camera.



Default user name:
admin
Default password:
admin

4.2 Access to the camera via browser on windows PC.



In browser you can view image and configure all parameters of camera.

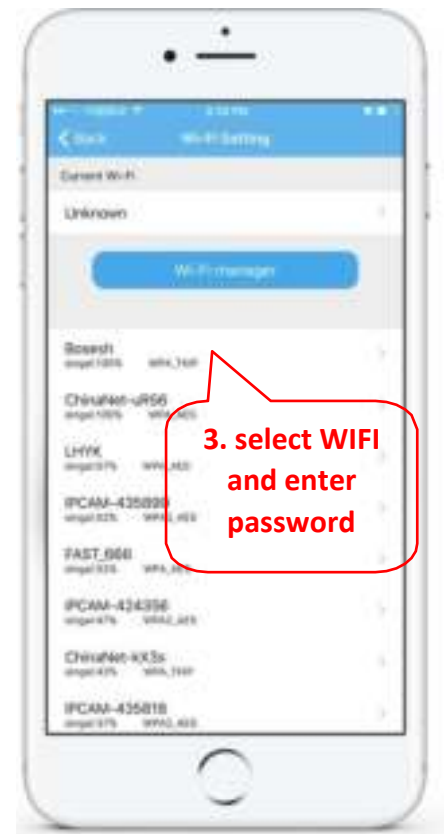
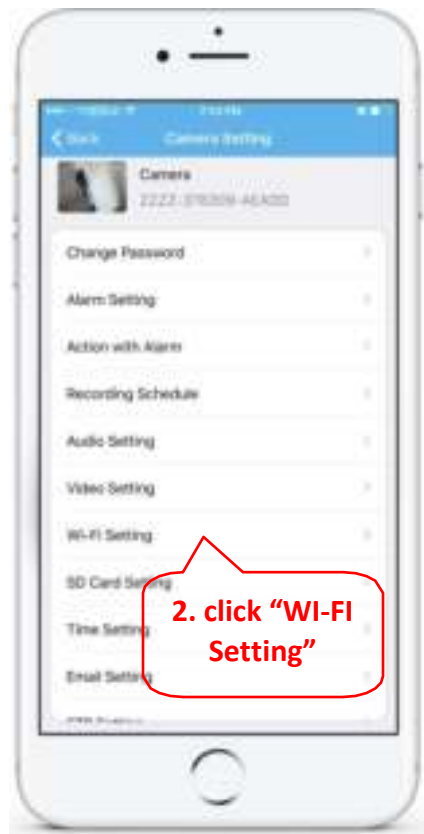
if you are not using IE browser some settings will be missing.

4.3 Connect and manage the multiple cameras via CMS on windows PC!

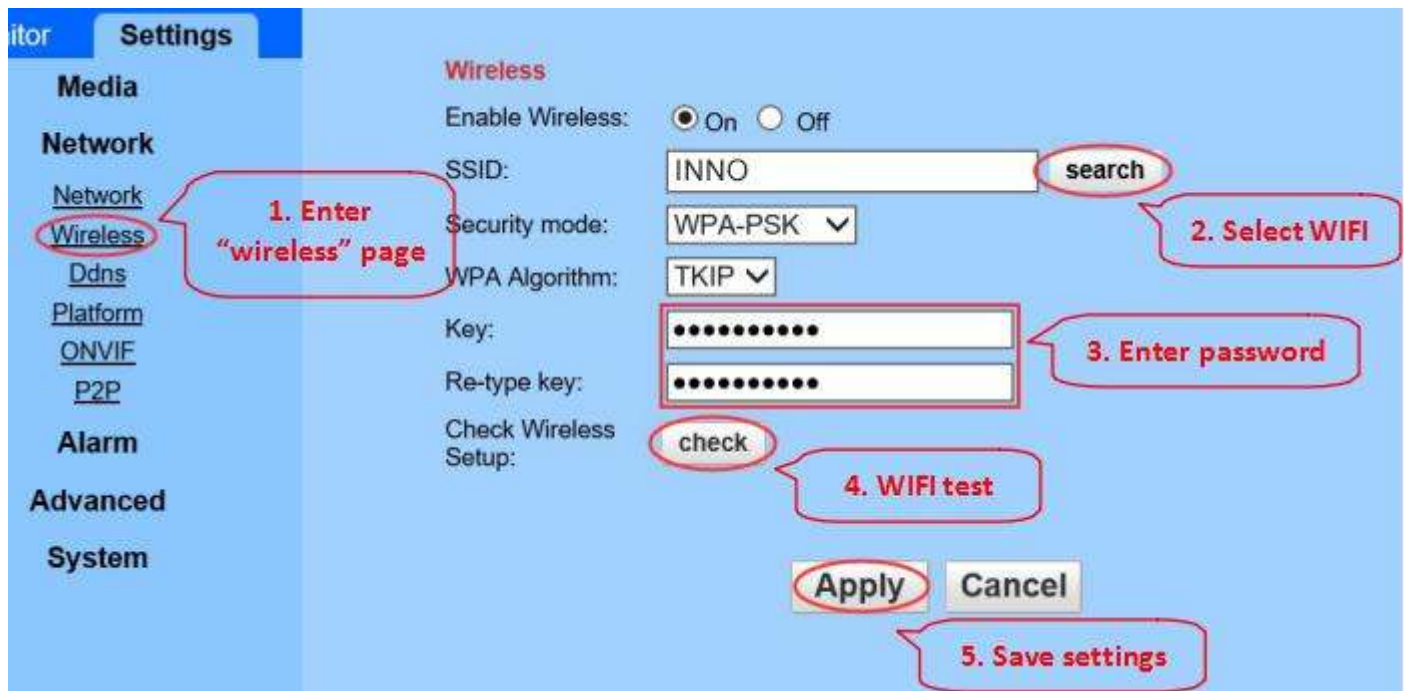


5. Set WIFI

5.1 Set WIFI on phone.



5.2 Set WIFI via browser on PC.



The WIFI connected to the camera must have a signal value greater than 50% and WIFI name must be English and cannot contain special characters.

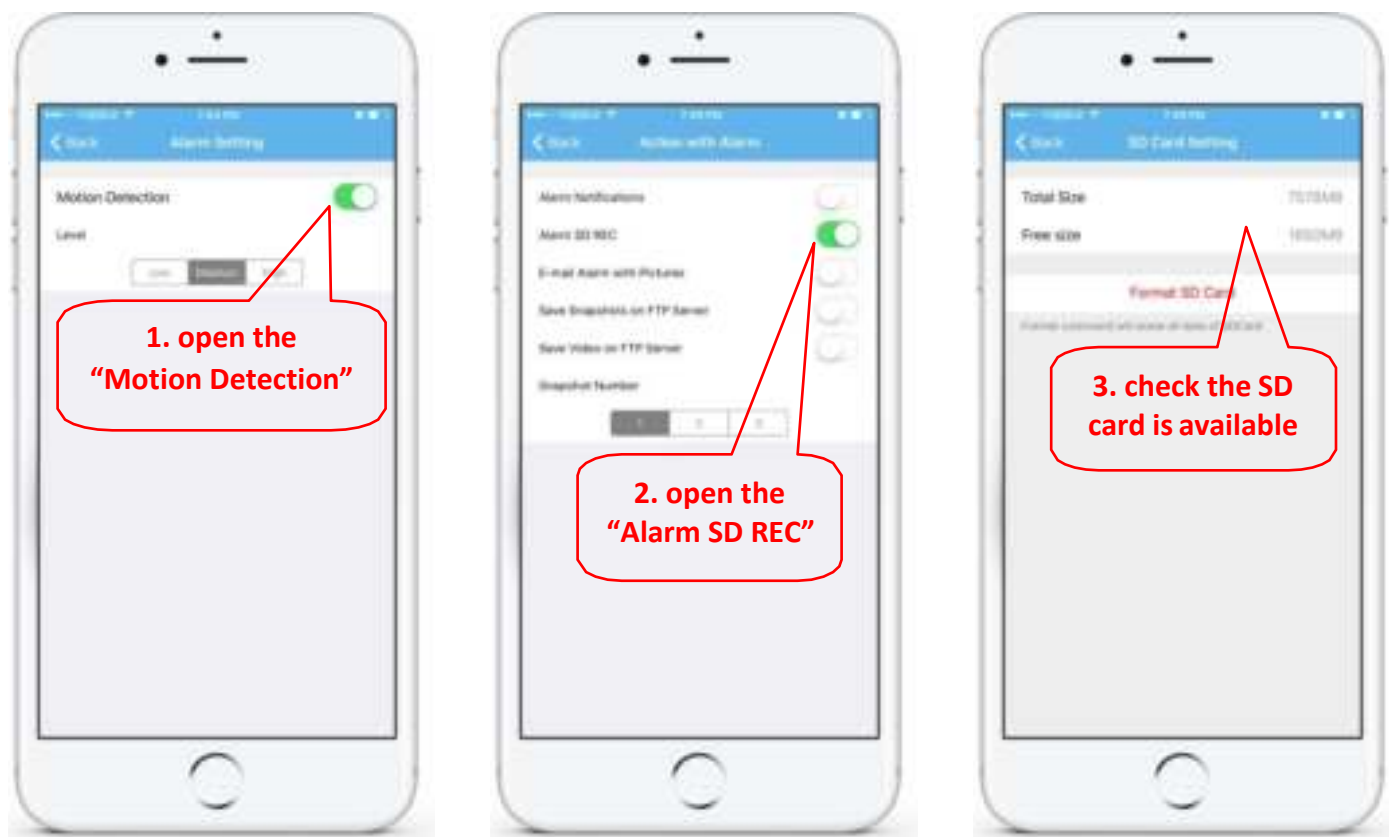
After the WIFI setting is completed, the camera will automatically switch to the WIFI connection when the network cable is unplugged.

6. Set Micro SD card record

6.1 TF card needs to be formatted first and installed on the camera correctly.

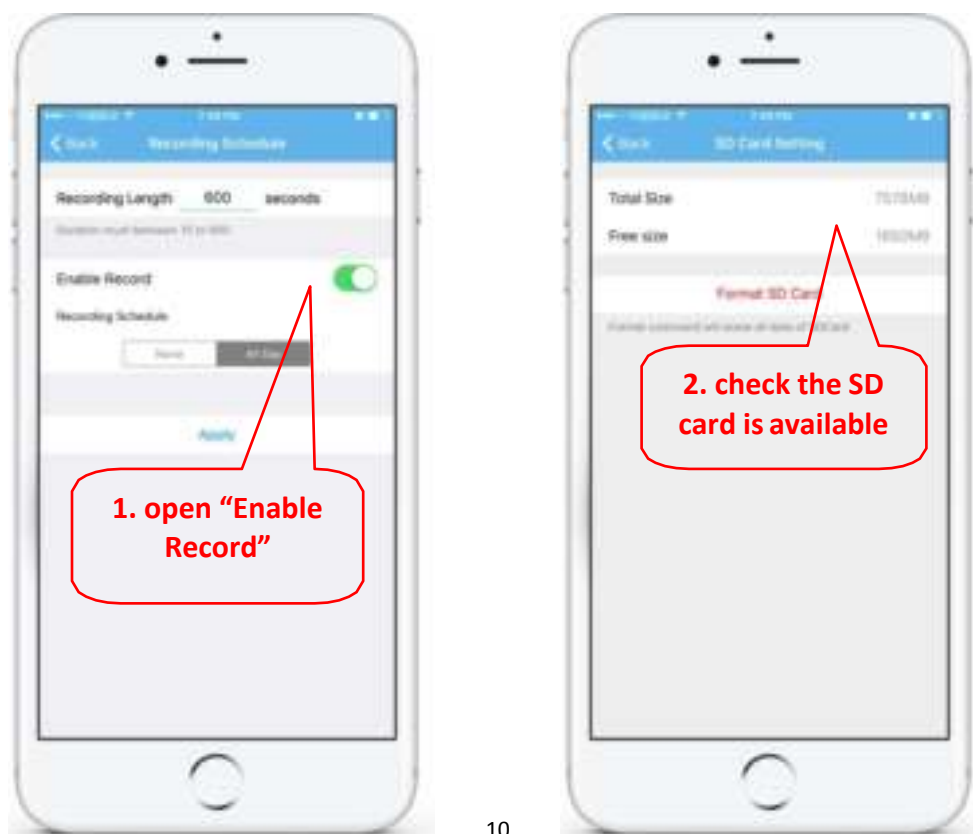
It is recommended to use TF card above Class 10.

6.2 Set motion detection alarm recording on the phone.



Motion detection alarm recording is recommended when the Micro SD card is small.

6.3 Set schedule recording on phone.



6.4 Playback record on phone.



These parameters can be set in more detail via IE browser on the PC!

7. Reboot and restore factory settings

7.1 Reconnect the power to restart the camera.



7.2 Press and hold the reset button for 15 seconds and the camera will restore to factory settings.



Also you can restart or reset the camera via mobile phone or PC.