

FCC COMPLIANCE

NOTE: This equipment has been tested and found to comply with the limits for a Class B digital device, pursuant to Part 15 of the FCC Rules. These limits are designed to provide reasonable protection against harmful interference in a residential installation. This equipment generates, uses and can radiate radio frequency energy and, if not installed and used in accordance with the instructions, may cause harmful interference to radio communications. However, there is no guarantee that interference will not occur in a particular installation. If this equipment does cause harmful interference to radio or television reception, which can be determined by turning the equipment off and on, the user is encouraged to try to correct the interference by one or more of the following measures:

- Reorient or relocate the receiving antenna.
- Increase the separation between the equipment and receiver.
- Connect the equipment into an outlet on a circuit different from that to which the receiver is connected.
- Consult the dealer or an experienced radio/TV technician for help.

This device complies with Part 15 of the FCC Rules. Operation is subject to the following two conditions: (1) This device may not cause harmful interference, and (2) this device must accept any interference received, including interference that may cause undesired operation.

Caution: Modifications not authorized by the manufacturer may void users authority to operate this device.

CAN ICES-3 (B)/NMB-3(B).

SAFE BATTERY USAGE

- Use alkaline batteries for best performance and longer life.
- Use only the battery type recommended for the unit.
- Batteries should be replaced only by an adult.
- Insert batteries with the correct polarity (+ and -).
- Do not mix old and new batteries.
- Do not mix alkaline, standard (carbon-zinc), or rechargeable batteries.
- Do not short-circuit batteries.
- When not used for an extended time, remove batteries to prevent possible leakage and damage to the unit.
- Do not mix rechargeable and non-rechargeable batteries.
- Rechargeable batteries are to be removed from the toy before charging.
- Rechargeable batteries are to be recharged only under adult supervision.
- Do not recharge non-rechargeable batteries.
- Exhausted batteries are to be removed from the toy.
- Do not dispose of batteries in fire as they may leak or explode.

⚠ WARNING:

This product contains a Button or Coin Cell Battery. A swallowed Button or Coin Cell Battery can cause internal chemical burns in as little as two hours and lead to death. Dispose of used batteries immediately. Keep new and used batteries away from children. If you think batteries might have been swallowed or placed inside any part of the body, seek immediate medical attention.

IMPORTANT NOTES ABOUT BUTTON BATTERIES

- WARNING - KEEP BATTERIES OUT OF REACH OF CHILDREN

- Swallowing may lead to serious injury in as little as 2 hours or death, due to chemical burns and potential perforation of the esophagus.
- If you suspect your child has swallowed or inserted a button battery immediately call the 24-hour Poisons Information Centre on 13 1126 (Australia)/ your local emergency services for fast, expert advice.
- Examine devices and make sure the battery compartment is correctly secured, e.g. that the screw or other mechanical fastener is tightened. Do not use if compartment is not secure.
- Dispose of used button batteries immediately and safely. Flat batteries can still be dangerous.
- Adults shall tell potential users about the risk of button batteries and keep their children away from button cell. Adult supervision is required.

Let's care for the environment!
The wheellie bin symbol indicates that the product must not be disposed of with other household waste. Please use designated collection points or recycling facilities when disposing of the item. Do not treat old batteries as household waste. Take them to a designated recycling facility.

Please keep this manual as it contains important information.



0820-0-E/INT
Printed in China

MGA Entertainment, Inc.
9220 Winnetka Ave. Chatsworth, CA 91311 U.S.A.
(800) 222-4685

MGA Entertainment UK Ltd.
50 Presley Way, Crownhill, Milton Keynes,
MK8 0ES, Bucks, UK
+ 0800 521 558

www.LOLsurprise.com
©2020 MGA Entertainment, Inc.
L.O.L. SURPRISE!™ and L.O.L. SURPRISE! O.M.G. OUTRAGEOUS
MILLENNIAL GIRLS REMIX™ are trademarks of MGA in the U.S. and
other countries. All logos, names, characters, likenesses, images,
slogans, and packaging appearance are the property of MGA.

MGA Entertainment (Netherlands) B.V.
Baronie 68-70, 2404 XG Alphen a/d Rijn, The Netherlands
Tel: +31 (0) 172 758038
E-mail: klantenservice@mgaee.com

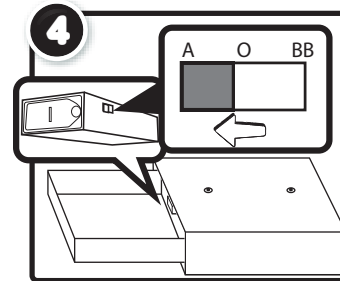
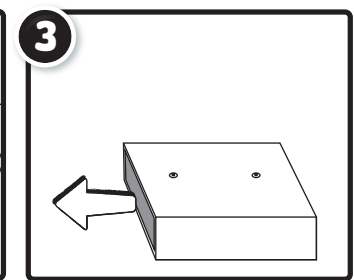
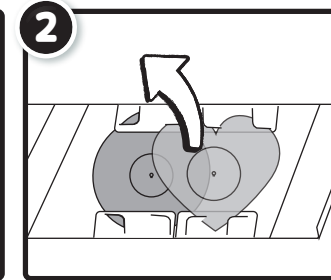
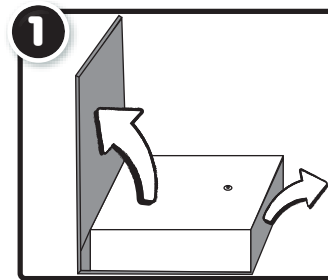
Imported by MGA Entertainment Australia Pty Ltd
Suite 2.02, 32 Delhi Road
Macquarie Park NSW 2113
1300 059 676

The preferred method of contact for
Customer Service is through our e-mail
contact form at www.mgae.com

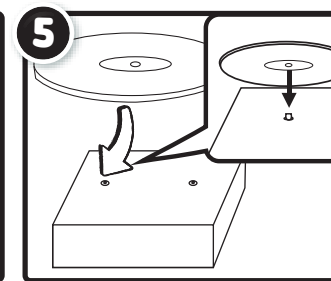


RECORD PLAYER

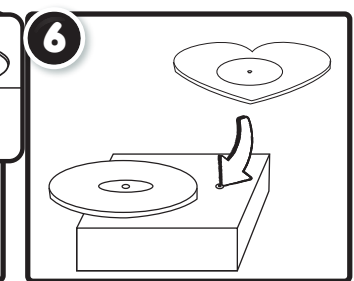
The box your dolls comes in is also a record player.



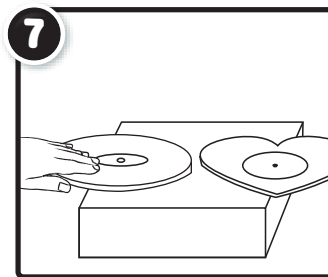
Move the switch from OFF (O) to "A"
mode.



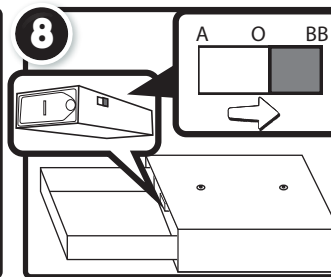
Insert Punk Grrrl's record (circle).
"Side A" should be facing up.



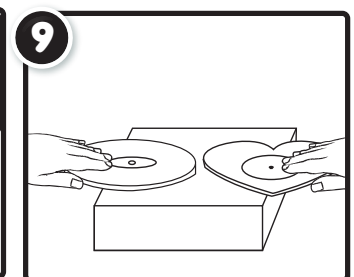
Insert Rocker Boi's record (heart).
"Side A" should be facing up.



Spin Punk Grrrl's record (circle) to hear her
verse. When the song ends, spin Rocker Boi's
(heart) and it will play his verse.



Move the switch on the battery
compartment to "BB" mode.



Remove the records and flip over to "Side B.B."
Then, replace and spin them both. It will play
the chorus. After playing, move the switch to
the OFF (O) position to conserve battery power.

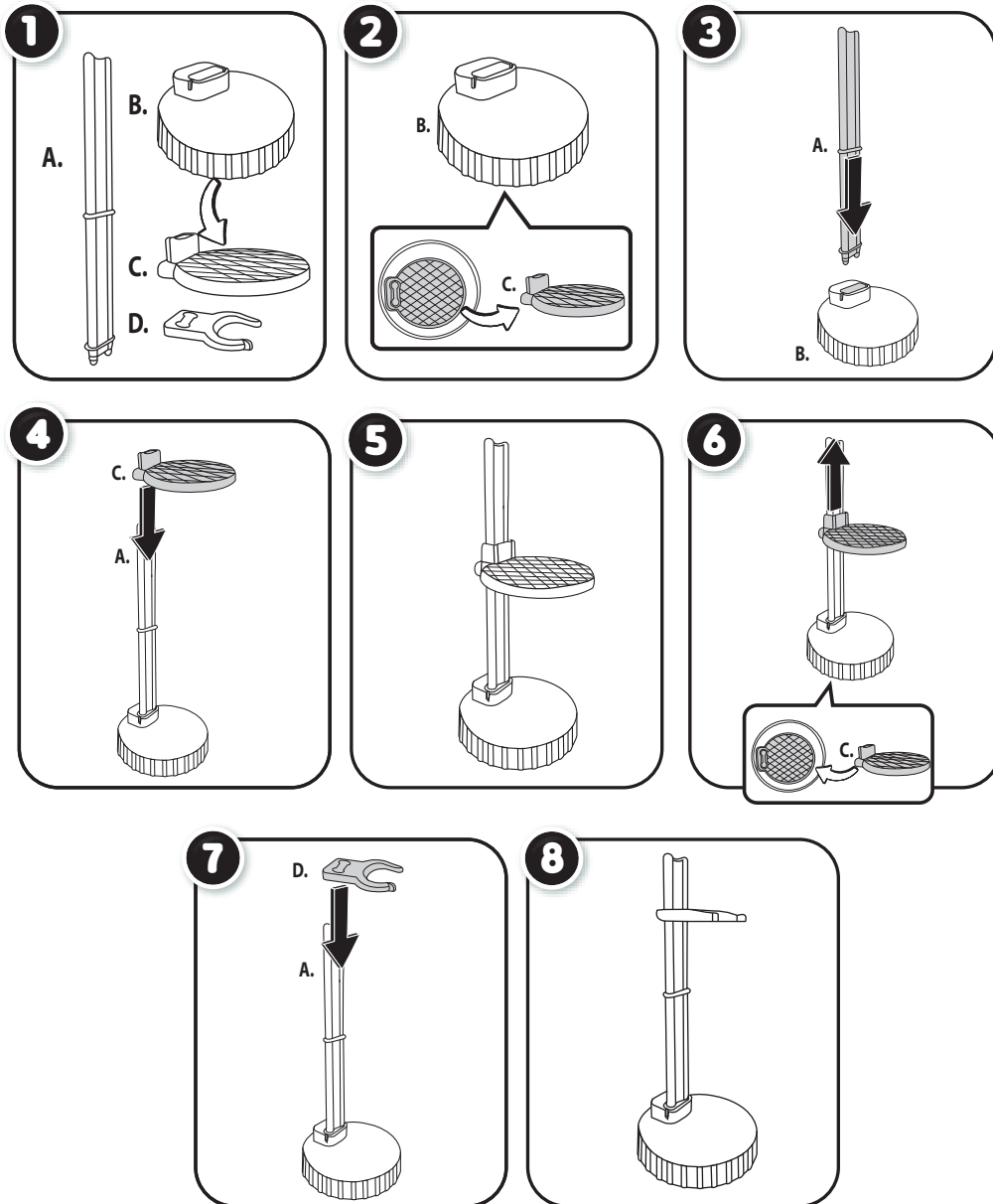
⚠ **WARNING:**
CHOKING HAZARD-Small parts.
Not for children under 3 years.

AGES 3+
ADULT SUPERVISION REQUIRED
ADULT BATTERY INSTALLATION REQUIRED
SKU: 567288

DOLL CHAIR & STAND

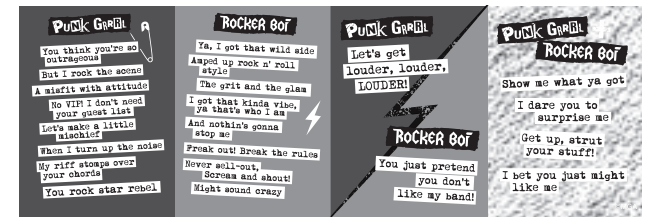
NOTES:

- The C-Clip (C) for Rocker Boi is a little bigger.
- Carefully place the dolls into the C-Clip to avoid damaging their accessories.



LYRICS!

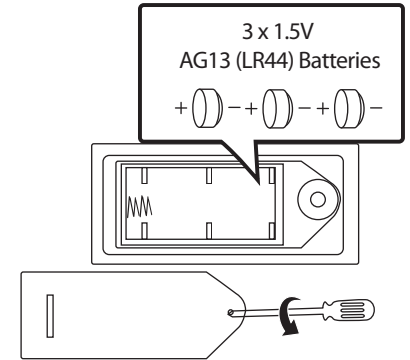
Unfold the magazine for the lyrics.



BATTERY REPLACEMENT

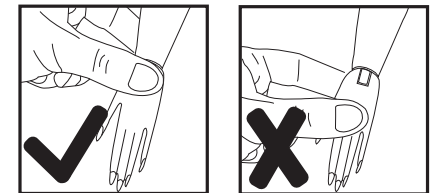
An adult must install fresh alkaline batteries in the record player's box should the batteries need replacing. Here's how:

1. Pull out the inside box to locate the battery compartment.
2. Using a Phillips screwdriver (not included) remove the screw and battery compartment cover.
3. Install three (3) 1.5V AG13 (LR44) alkaline batteries (not included) making sure the (+) and (-) ends face the proper direction as indicated inside the battery compartment.
4. Replace the compartment cover and tighten the screw. Then, push in the box.



IMPORTANT INFORMATION

- Illustrations are for reference only. Styles may vary from actual contents.
- Please keep this manual as it contains important information.
- Doll stand can be both a stand and a chair.
- The seat (C) is stored under the base (B).
- For added support when doll is sitting, add the c-clip (D).
- Keep moisture away from the battery compartment.
- Avoid getting the fashion dolls wet, as it may damage the flocking on the hair.
- Move the switch on the battery compartment to the OFF (O) position after playing to conserve battery power.
- Rocker Boi's feet are not removable.



TIPS:

- When removing the hands to dress doll, pinch the wrists' joints and gently pull. **DO NOT PULL FROM THE FINGERS.**
- Your doll is articulated, but the knee joint will need to be loosened. To loosen the knee joint, use slight force to pull the leg forward until the knee clicks. Then, push the leg back and it will click again.

* Only Rocker Boi's outfit can fit Punk Grrrl.